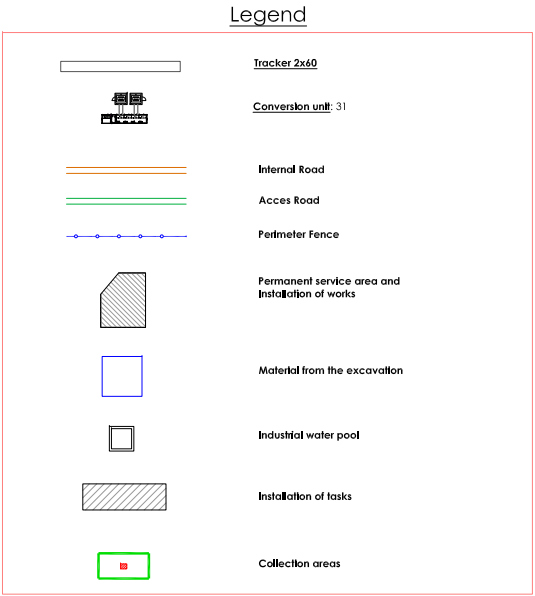
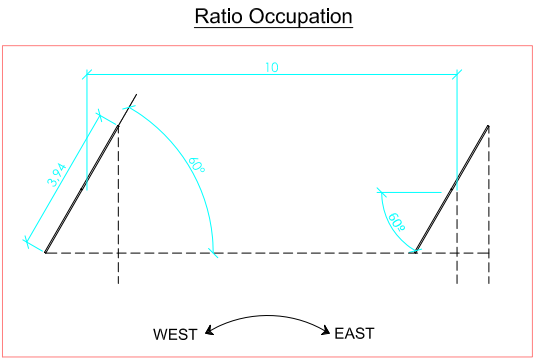
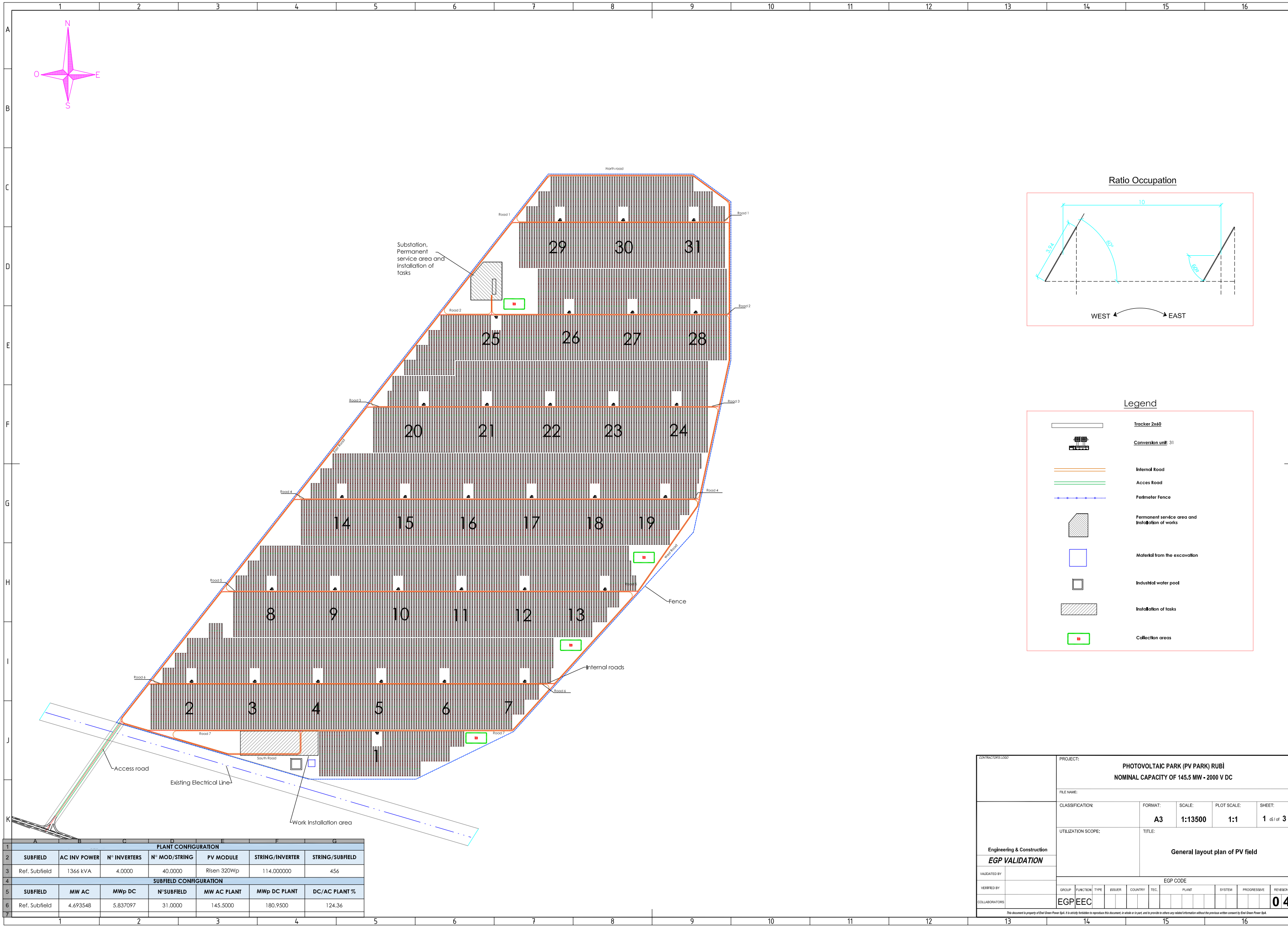
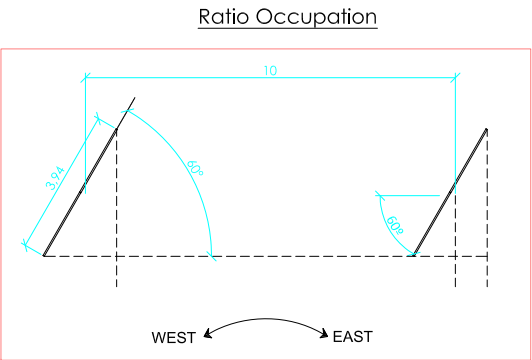
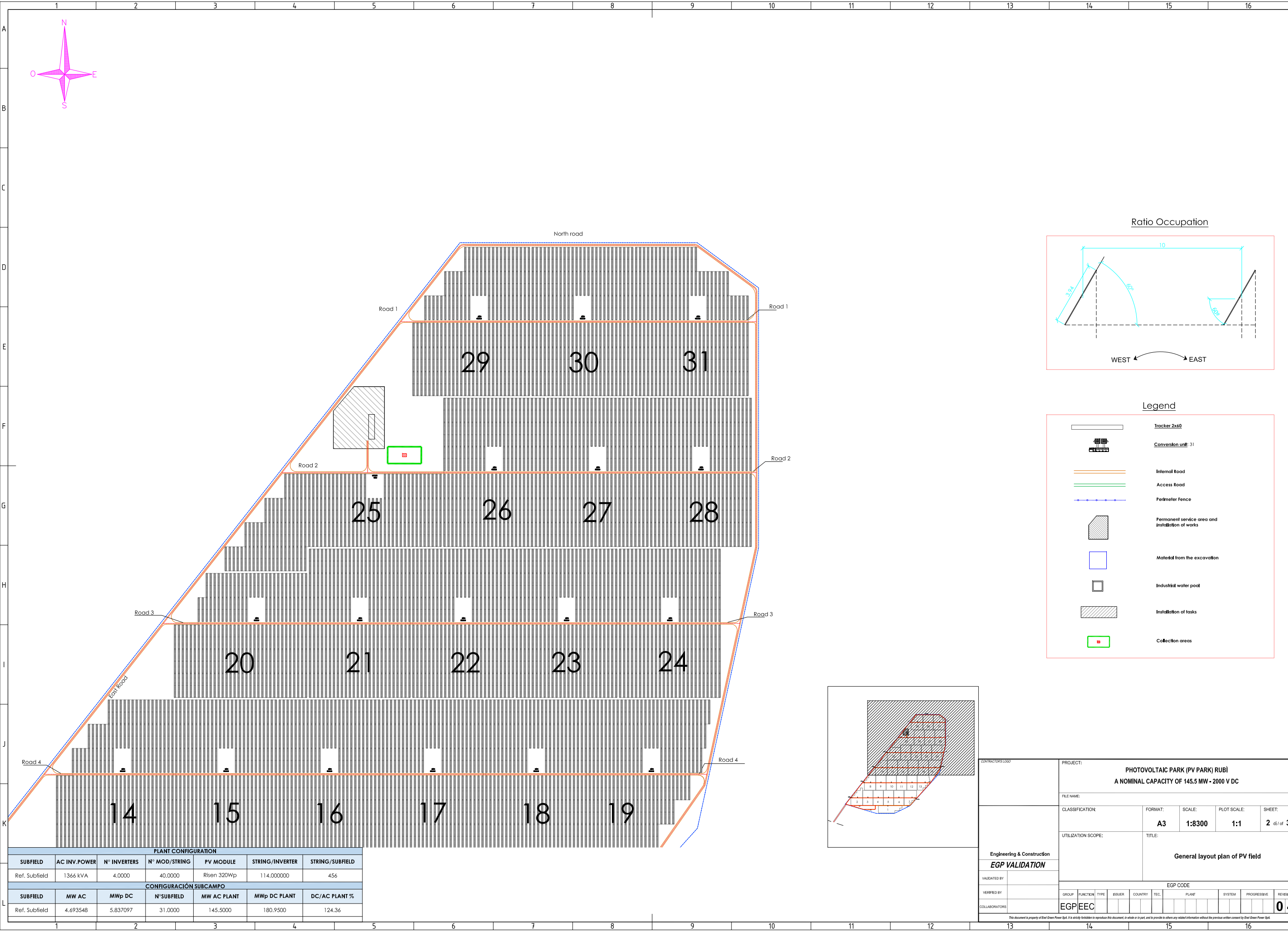


# ***APPENDICE***



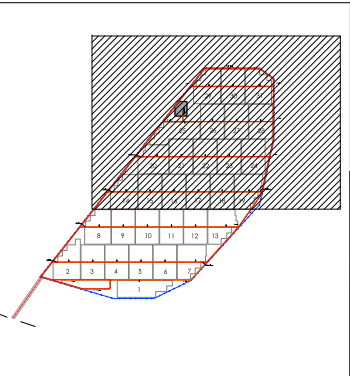
PLANT CONFIGURATION						
SUBFIELD	AC INV POWER	N° INVERTERS	N° MOD/STRING	PV MODULE	STRING/INVERTER	STRING/SUBFIELD
Ref. Subfield	1366 kVA	4.0000	40.0000	Risen 320Wp	114.000000	456
SUBFIELD CONFIGURATION						
SUBFIELD	MW AC	MWp DC	N°SUBFIELD	MW AC PLANT	MWp DC PLANT	DC/AC PLANT %
Ref. Subfield	4.693548	5.837097	31.0000	145.5000	180.9500	124.36

COMMITTEES LOGO		PROJECT: <div>PHOTOVOLTAIC PARK (PV PARK) RUBI</div> <div>NOMINAL CAPACITY OF 145.5 MW - 2000 V DC</div>									
		FILE NAME:									
	CLASSIFICATION:				FORMAT: <div>A3</div>	SCALE: <div>1:13500</div>	PLOT SCALE: <div>1:1</div>	SHEET: <div>1 di / 3</div>			
	UTILIZATION SCOPE:				TITLE: <div>General layout plan of PV field</div>						
	Engineering & Construction										
	EGP VALIDATION										
	VALIDATED BY:										
VERIFIED BY:				EGP CODE							
COLLABORATORS	GROUP	FUNCTION	TYPE	ISSUER	COUNTRY	TEC.	PLANT		SYSTEM	PROGRESSIVE	REVISION
	EGP	EEC									04
This document is property of Ecol Green Power SpA. It is strictly forbidden to reproduce this document, in whole or in part, and to provide to others any related information without the previous written consent by Ecol Green Power SpA.											



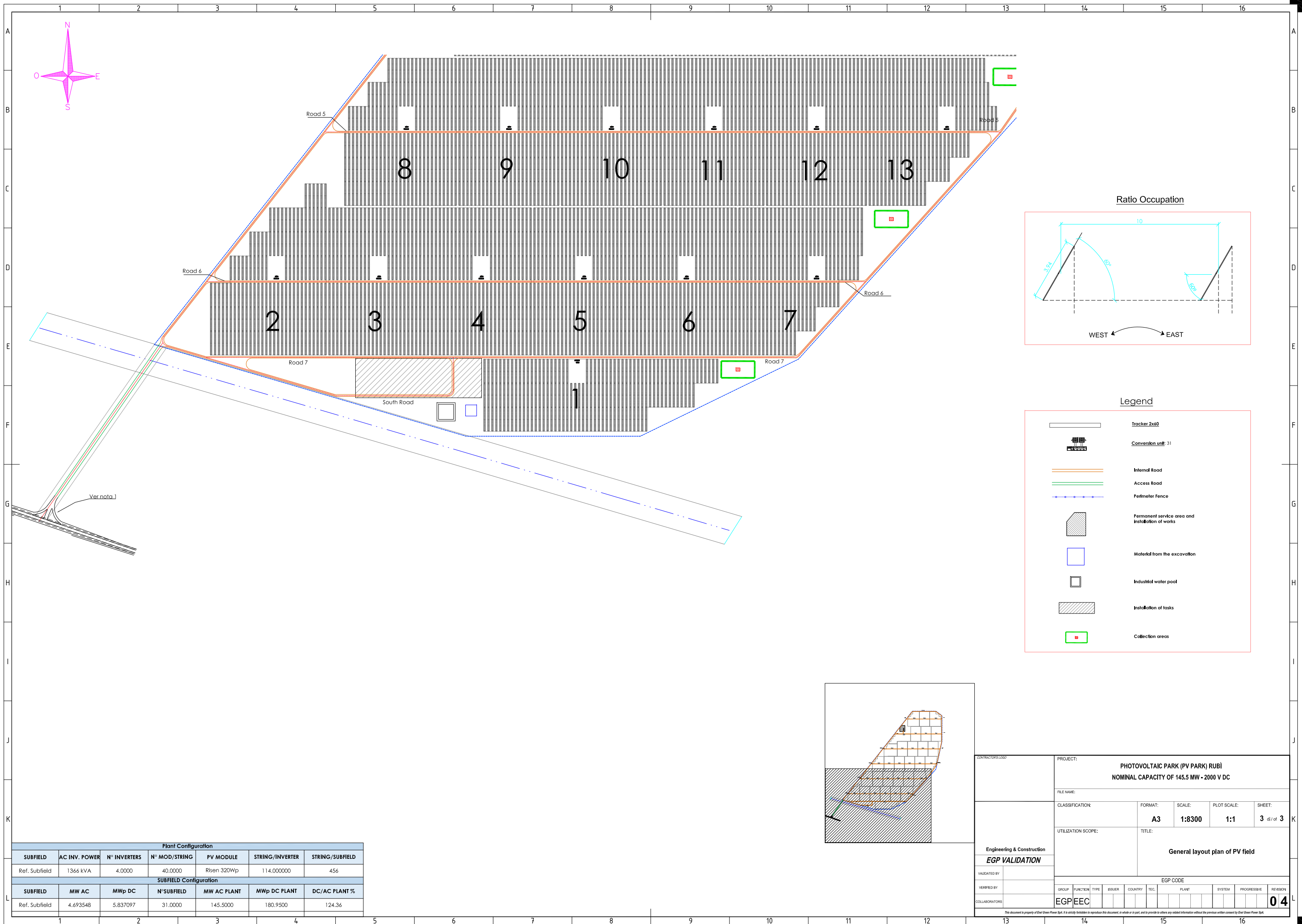
Legend

- Tracker 2x60
- Conversion unit: 31
- Internal Road
- Access Road
- Perimeter Fence
- Permanent service area and installation of works
- Material from the excavation
- Industrial water pool
- Installation of tasks
- Collection areas



PLANT CONFIGURATION						
SUBFIELD	AC INV.POWER	N° INVERTERS	N° MOD/STRING	PV MODULE	STRING/INVERTER	STRING/SUBFIELD
Ref. Subfield	1366 kVA	4.0000	40.0000	Risen 320Wp	114.000000	456
CONFIGURACIÓN SUBCAMPO						
SUBFIELD	MW AC	MWp DC	N°SUBFIELD	MW AC PLANT	MWp DC PLANT	DC/AC PLANT %
Ref. Subfield	4.693548	5.837097	31.0000	145.5000	180.9500	124.36

CONTRACTORS LOGO		PROJECT: PHOTOVOLTAIC PARK (PV PARK) RUBI A NOMINAL CAPACITY OF 145.5 MW - 2000 V DC															
		FILE NAME:															
<div>Engineering &amp; Construction</div> <div>EGP VALIDATION</div>		CLASSIFICATION:			FORMAT: A3		SCALE: 1:8300		PLOT SCALE: 1:1		SHEET: 2 di / of 3						
		UTILIZATION SCOPE:			TITLE: General layout plan of PV field												
		VALIDATED BY:			EGP CODE												
		VERIFIED BY:			GROUP		FUNCTION	TYPE	ISSUER	COUNTRY	TEC.	PLANT		SYSTEM	PROGRESSIVE	REVISION	
COLLABORATORS		EGP		EEEC												04	
This document is property of Enel Green Power SpA. It is strictly forbidden to reproduce this document, in whole or in part, and to provide to others any related information without the previous written consent by Enel Green Power SpA.																	



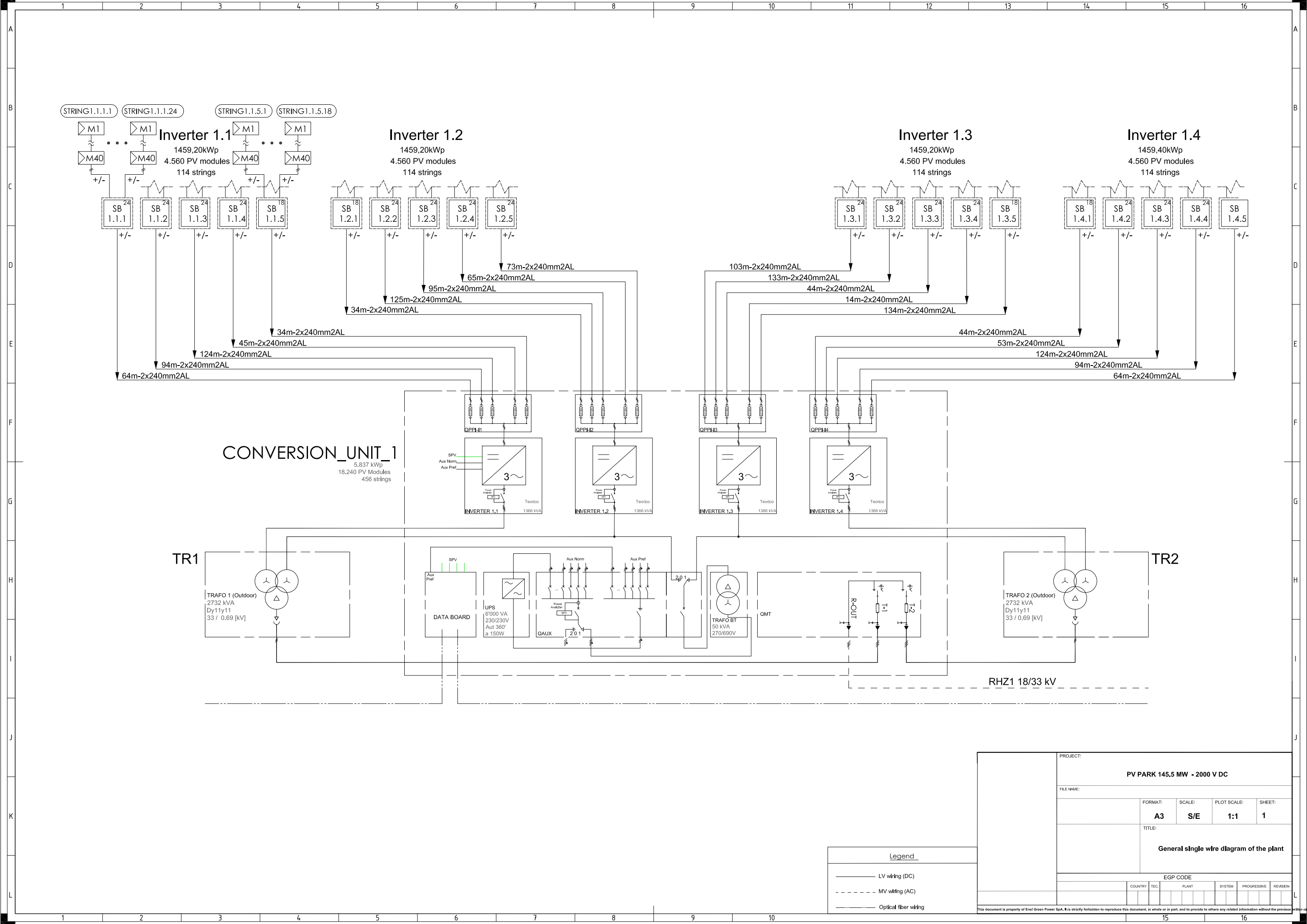


[illegible][illegible][illegible][illegible][illegible][illegible][illegible]

Tracker

Conversion unit

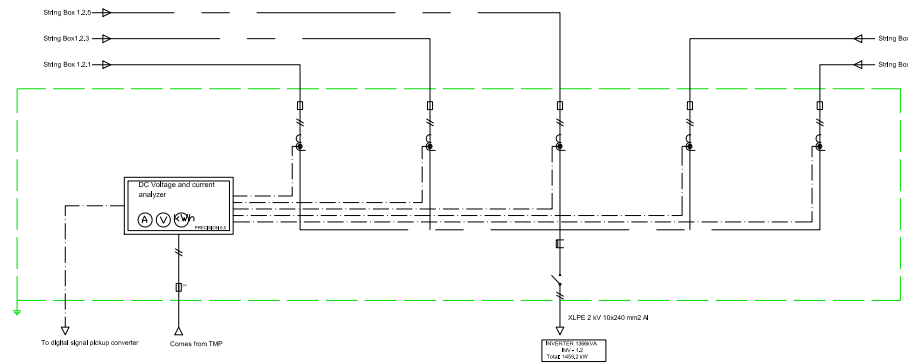
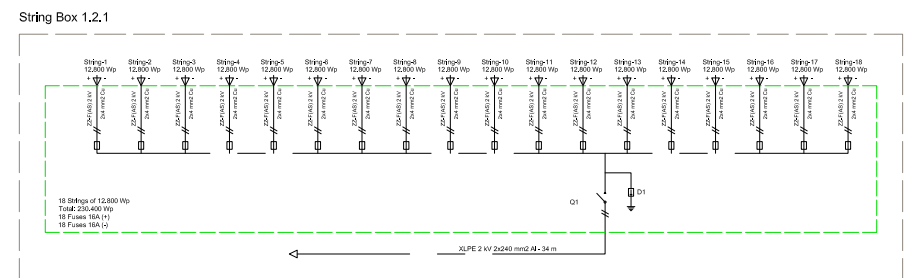
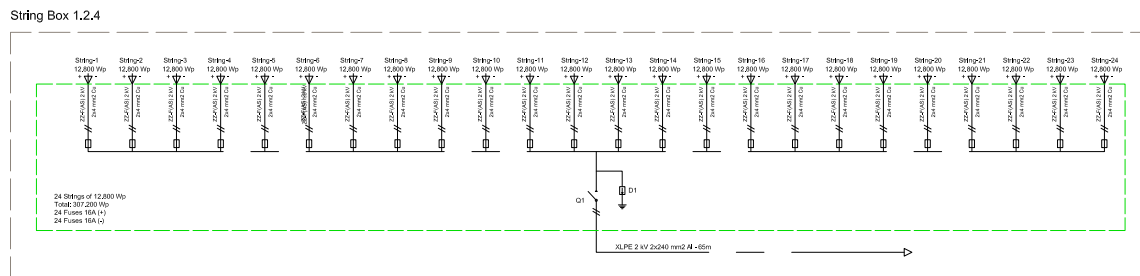
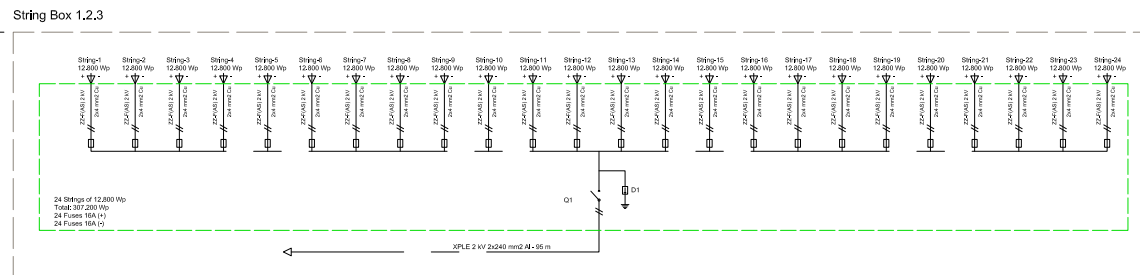
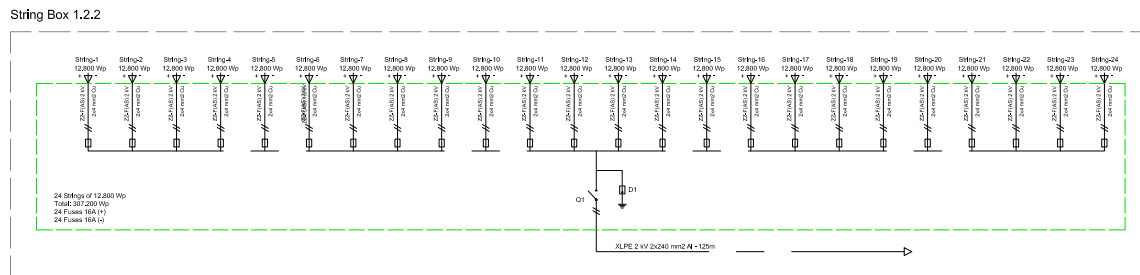
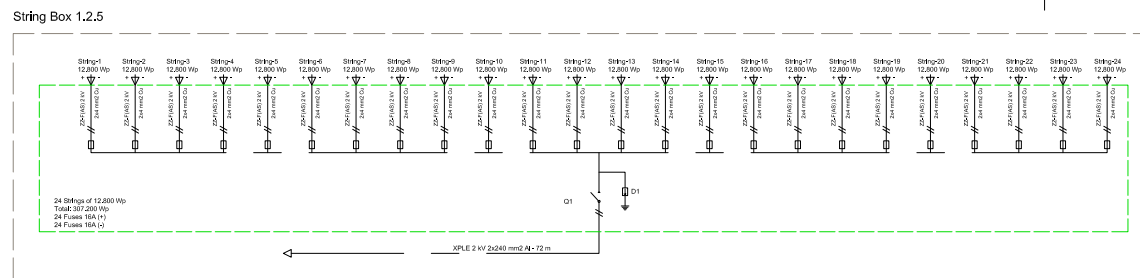
CONTRACTORS LOGO		PROJECT:											
<div>Engineering &amp; Construction</div> <div>EGP VALIDATION</div> <div>VALIDATED BY</div> <div>VERIFIED BY</div> <div>COLLABORATORS</div>		FILE NAME:											
		CLASSIFICATION:				FORMAT: <b>A3</b>		SCALE: <b>1:6500</b>		PLOT SCALE: <b>1:1</b>		SHEET: <b>1 of 1</b>	
		UTILIZATION SCOPE:				TITLE:  <b>Reference Subfields</b>							
		EGP CODE											
		GROUP	FUNCTION	TYPE	ISSUER	COUNTRY	TEC.	PLANT	SYSTEM	PROGRESSIVE	REVISION		
		EGP	EEC								<b>04</b>		
<i>This document is property of Enel Green Power SpA. It is strictly forbidden to reproduce this document, in whole or in part, and to provide to others any related information without the previous written consent by Enel Green Power SpA.</i>													



Legend	
—	LV wiring (DC)
- - - - -	MV wiring (AC)
—	Optical fiber wiring

PROJECT:	
PV PARK 145.5 MW - 2000 V DC	
FILE NAME:	
FORMAT:	SCALE:
A3	S/E
PLOT SCALE:	SHEET:
1:1	1
TITLE:	
General single wire diagram of the plant	
EGP CODE	
COUNTRY	TEC.
PLANT	SYSTEM
PROGRESSIVE	REVISION

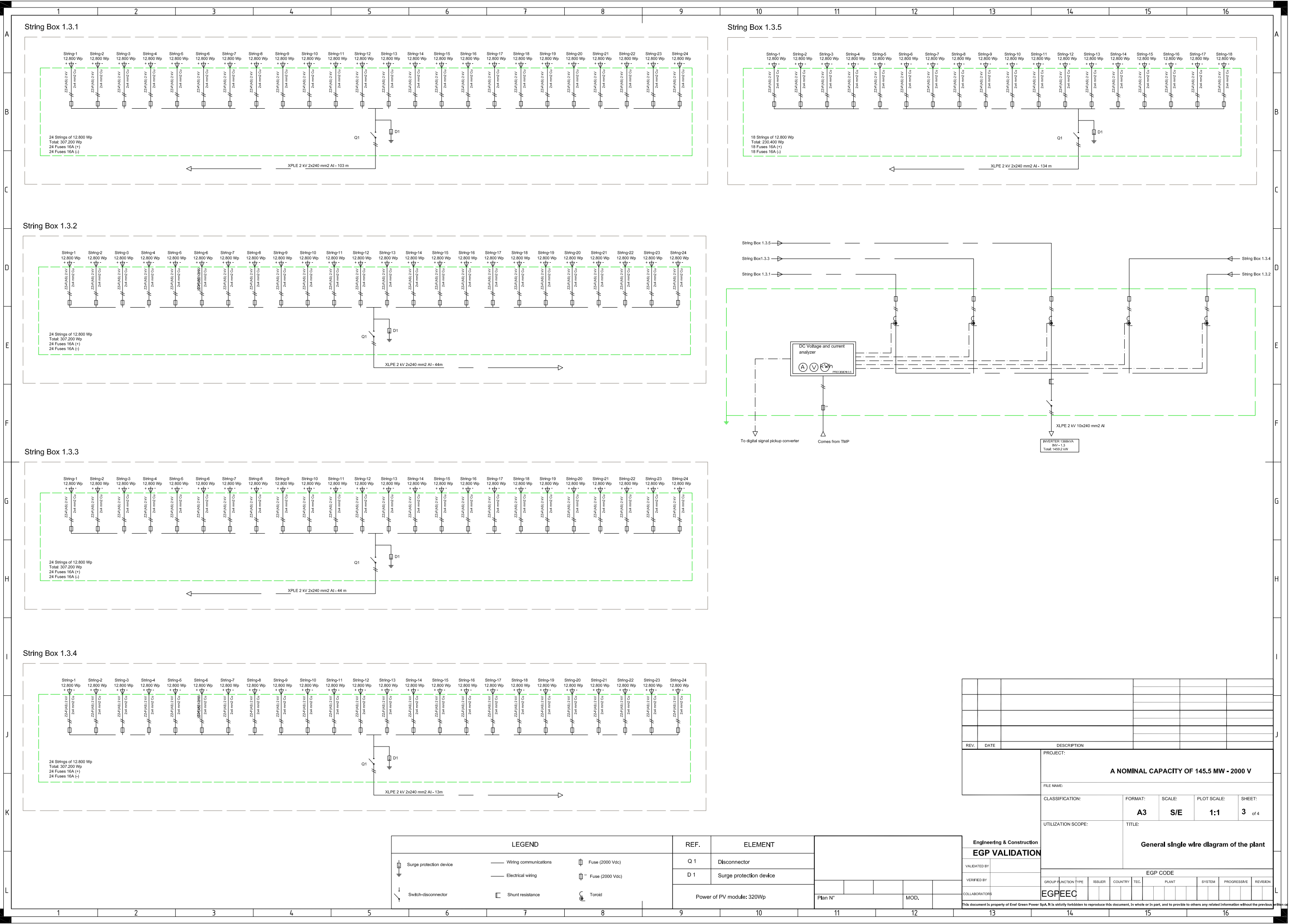




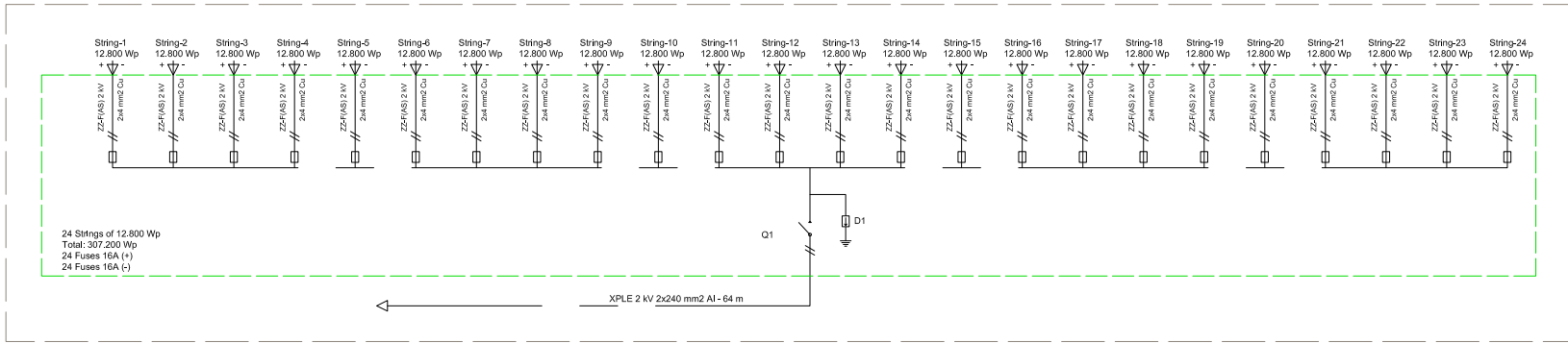
REV.	DATE	DESCRIPTION									
		PROJECT:									
		PV PARK 145.5 MW - 2000 V DC									
		FILE NAME:									
		CLASSIFICATION				FORMAT:	SCALE:	PLOT SCALE:	SHEET:		
						A3	S/E	1:1	2 / of 4		
		UTILIZATION SCOPE:				TITLE:					
Engineering & Construction						General single wire diagram of the plant					
EGP VALIDATION											
UNDESIGNED BY		EGP CODE									
VERIFIED BY											
COLLABORATORS		GROUP/FUNCTION TYPE	ISSUER	COUNTRY	TEL.	PLANT	SYSTEM	PROGRESSIVE	REVISION		
		EGP/EEC									

This document is property of Enel Green Power. It is to be used only for the project for which it was prepared. It is to be returned to the company that prepared it, without any delay.

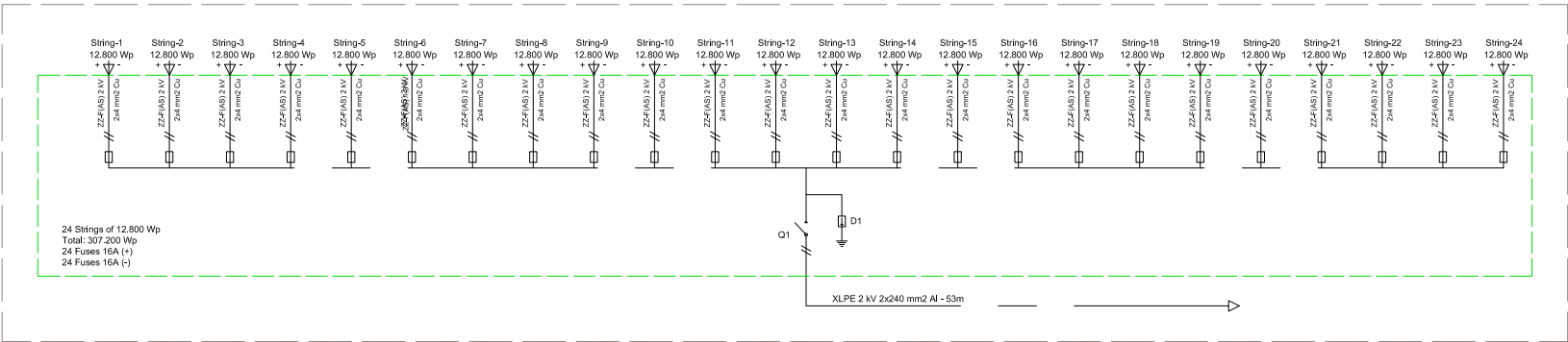




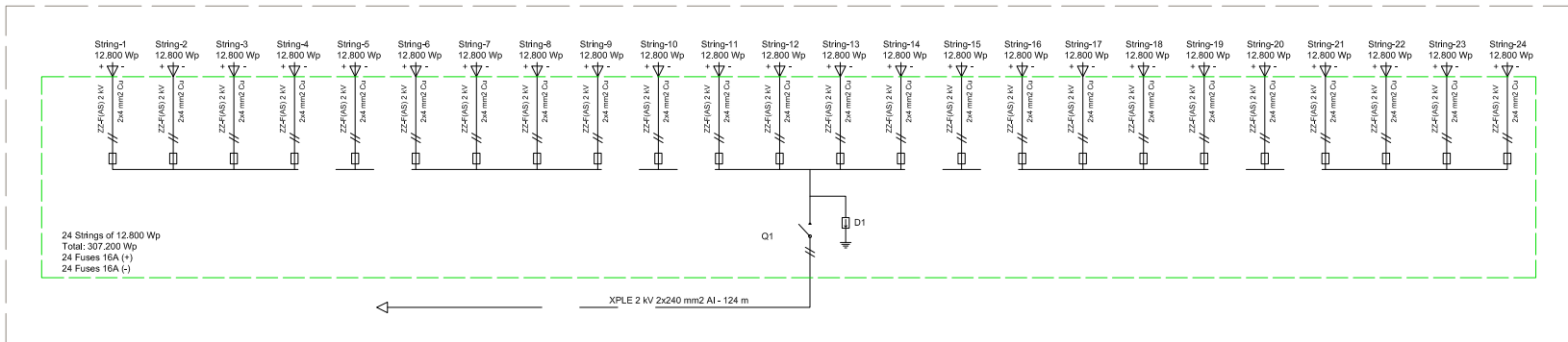
String Box 1.4.5



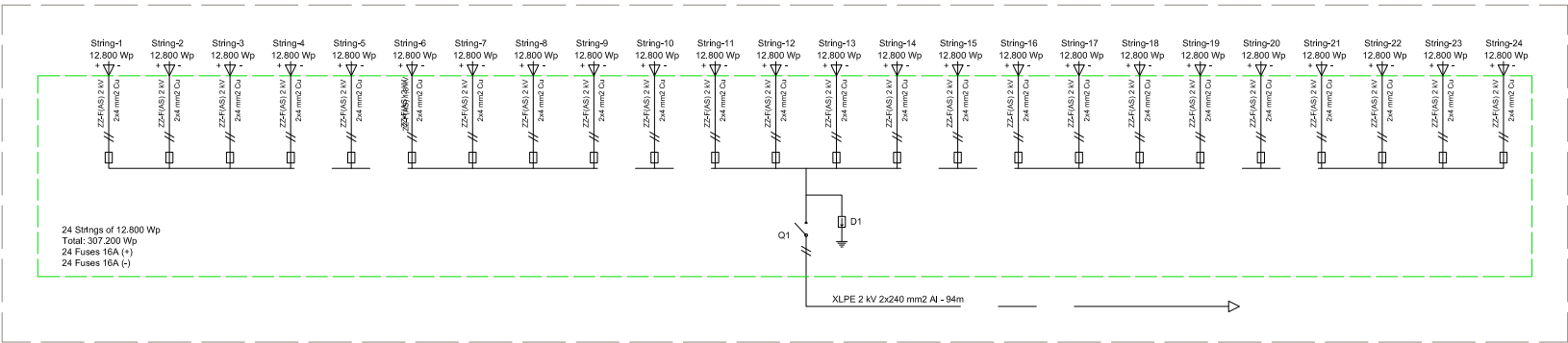
String Box 1.4.2



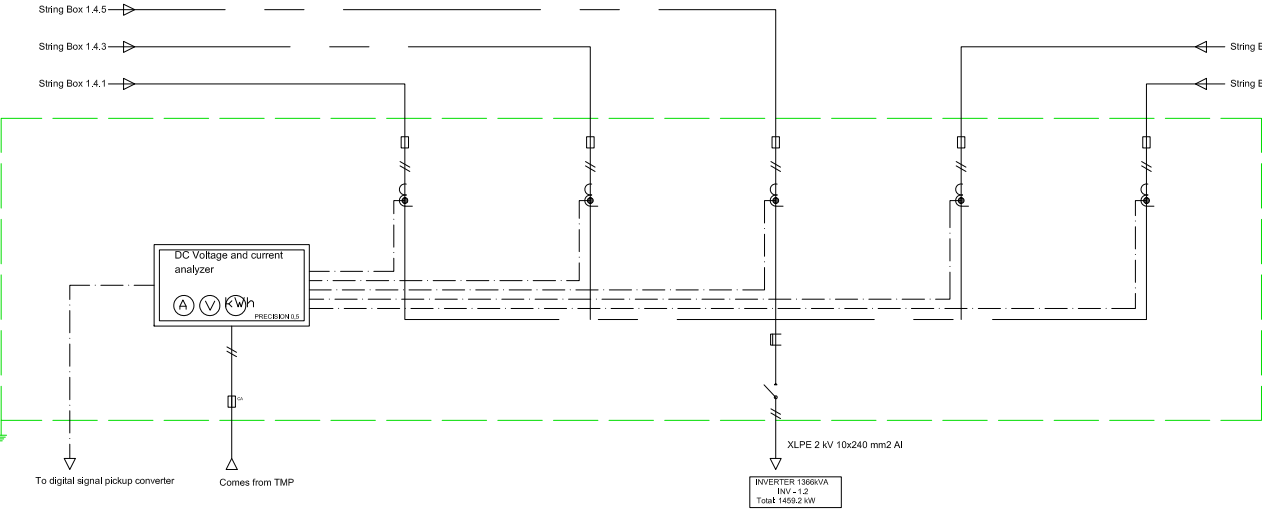
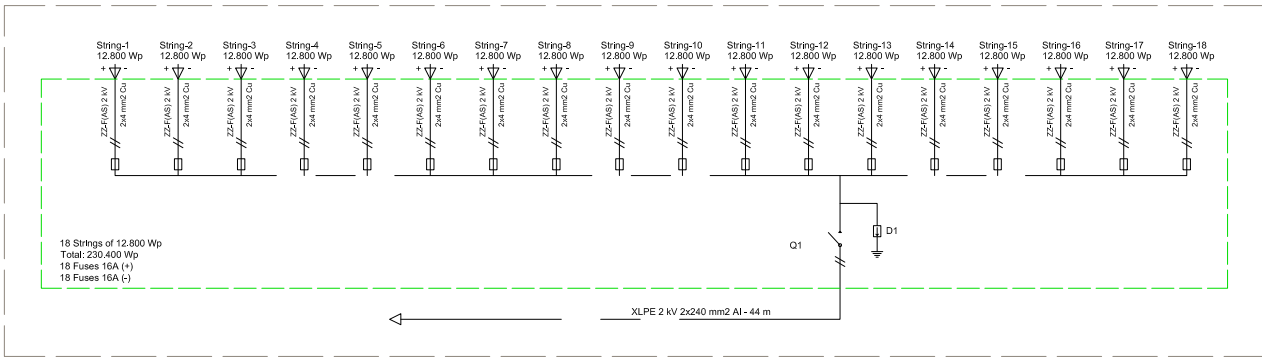
String Box 1.4.3



String Box 1.4.4

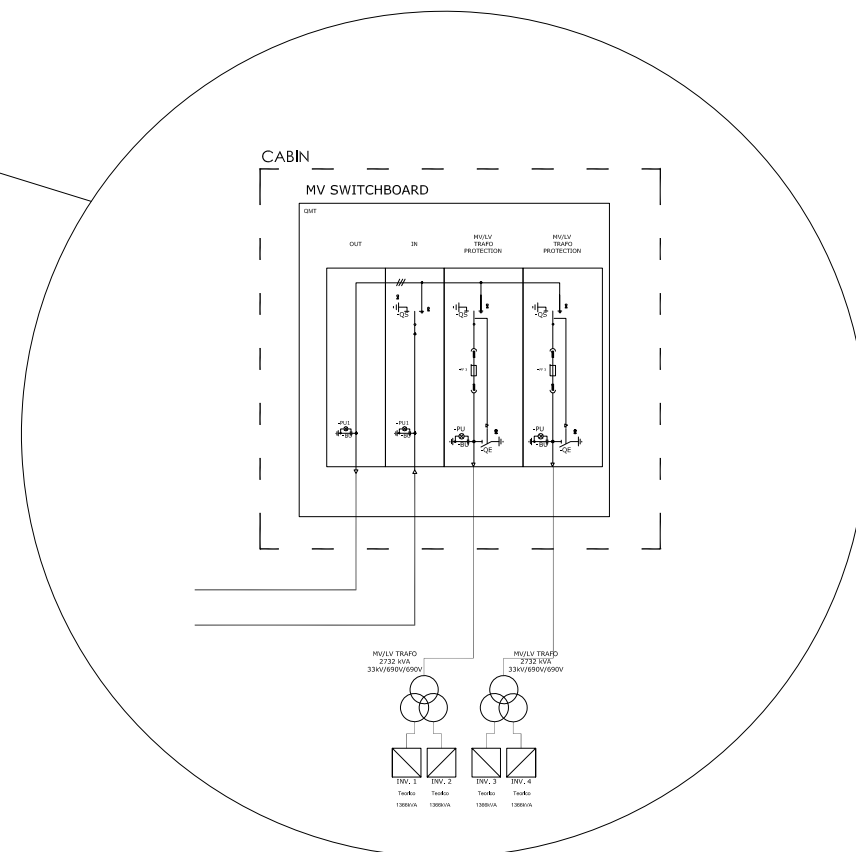
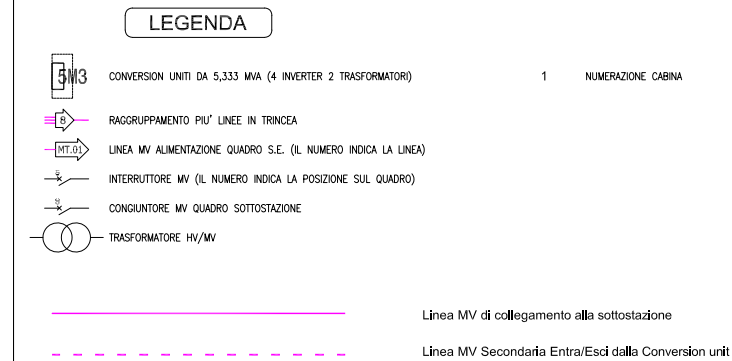


String Box 1.4.1



LEGEND			REF.	ELEMENT
	Surge protection device		Q 1	Disconnector
	Switch-disconnector		D 1	Surge protection device
	Fuse (2000 Vdc)		Power of PV module: 320Wp	
	Fuse (2000 Vdc)			

REV.	DATE	DESCRIPTION
PROJECT:		
PV PARK 145.5 MW - 2000 V DC		
FILE NAME:		
CLASSIFICATION:	FORMAT:	SCALE:
	A3	S/E
UTILIZATION SCOPE:	PLOT SCALE:	SHEET:
	1:1	4 of 4
TITLE:		
General single wire diagram of the plant		
EGP CODE		
GROUP	FUNCTION TYPE	ISSUER
EGP	EEC	
SYSTEM	PROGRESSIVE	REVISION

[illegible]