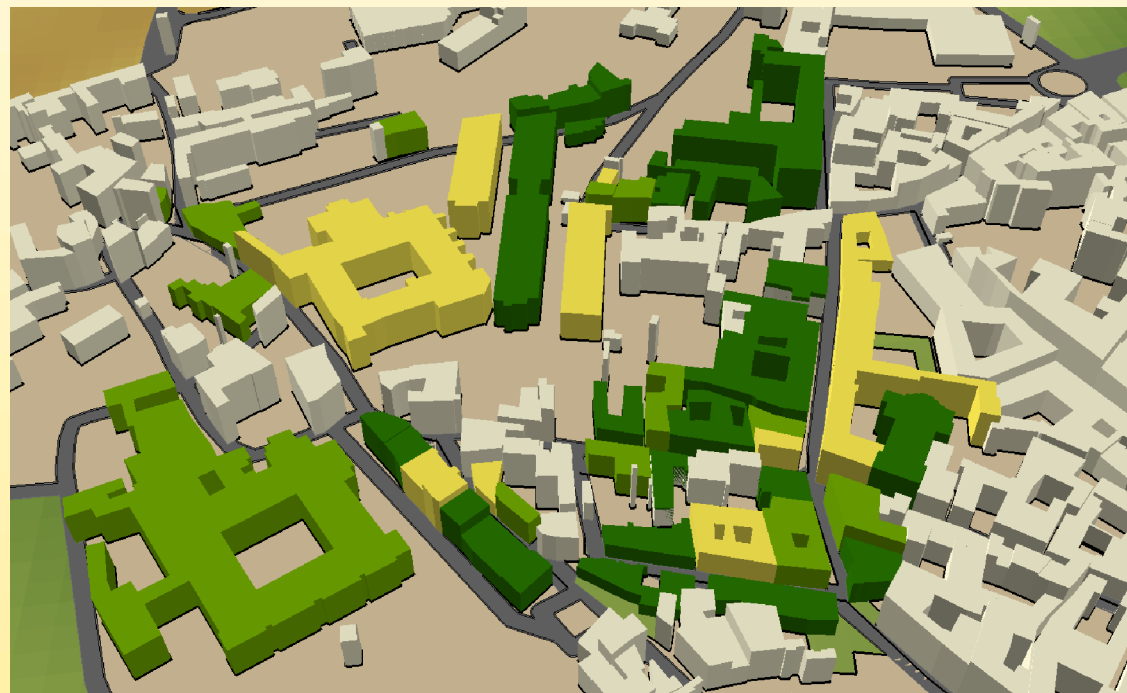
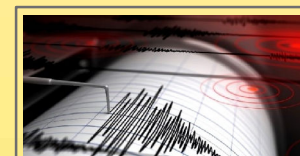
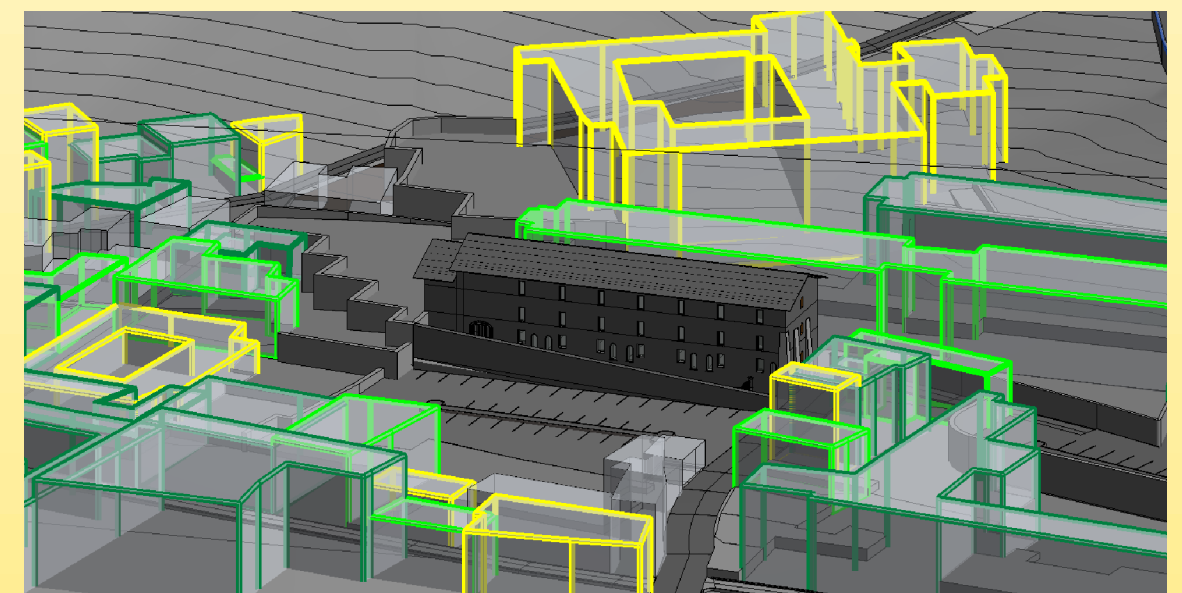
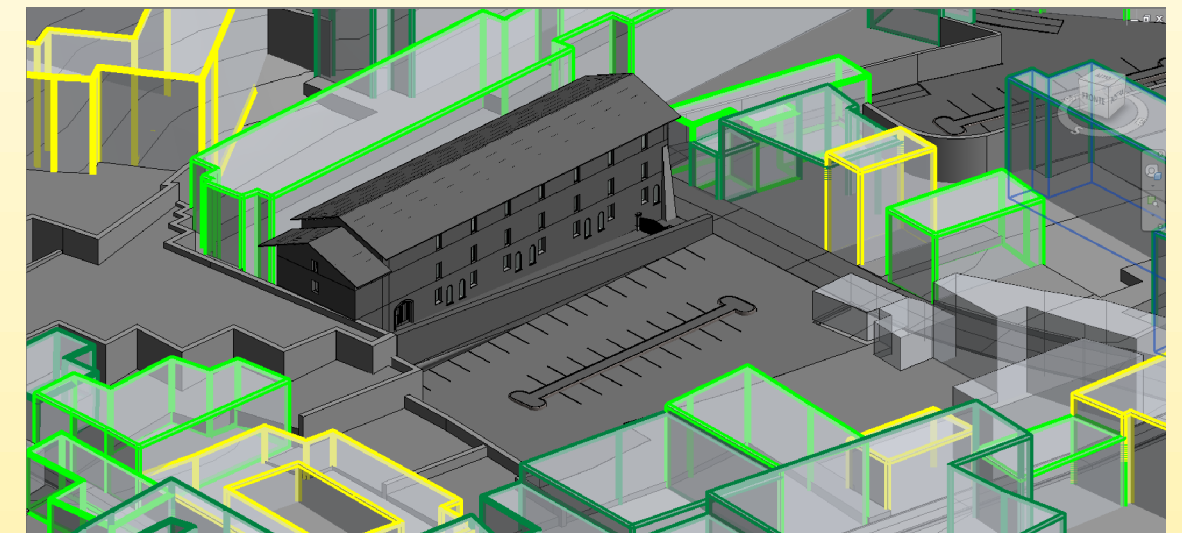
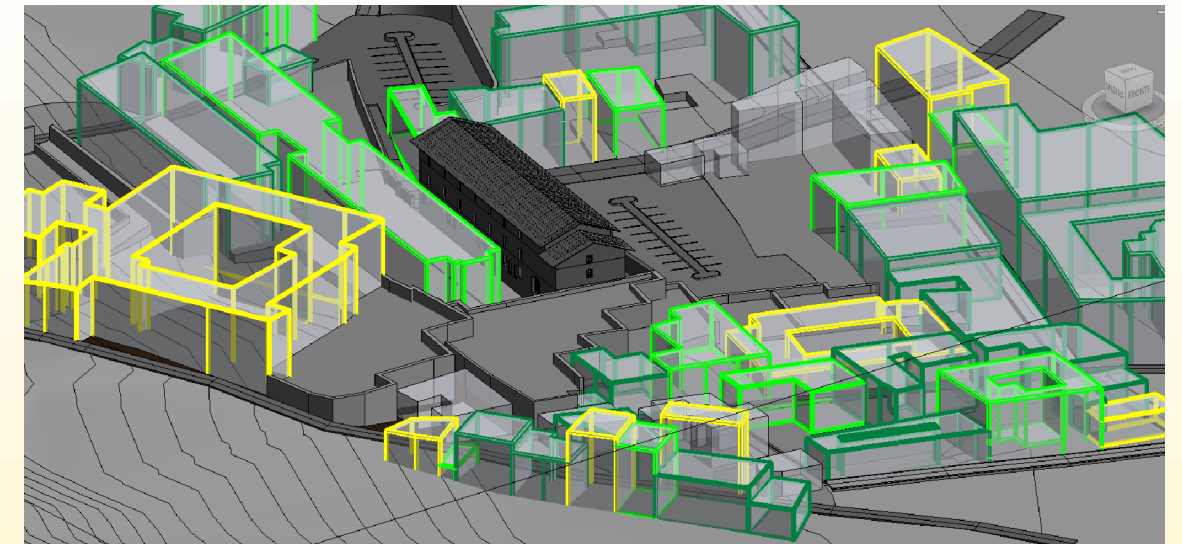


ARCSCE 3D



AUTODESK REVIT BIM



INTEROPERABILITA' BIM/GIS  
NELLA CLASSIFICAZIONE  
DELLA VULNERABILITA' SISMICA  
DEGLI EDIFICI

**TAVOLA**  
**3**

Corso di laurea in Ingegneria Edile

Tesi di Laurea Magistrale

Relatori:  
Prof.ssa Osello Anna  
Ing. Bocconcino Maurizio Marco

Candidato:  
Coccia Domenico Emanuele