

POLITECNICO DI TORINO
SECOND SCHOOL OF ARCHITECTURE
ÉCOLE NATIONALE SUPÉRIEURE D'ARCHITECTURE DE GRENOBLE
Master of Science in Architecture
Honors theses

AEDIFICATION, GRANDS TERRITOIRES, VILLES scenarios and visions for the Grésivaudan Valley

by Andrea Revello

Tutor: Massimo Camasso

Co-tutors: Silvia Gron, Patrick Thépot, Françoise Véry

This thesis derives from two separate phases, the first one took place in the second semester of the year spent in Grenoble according to the program of Double Degree, the second one on my return in Italy, through a process of reading over, re-organization and integration of an elaborate intense but synthetic, heralding of posthumous satisfactions but perceived as incomplete.

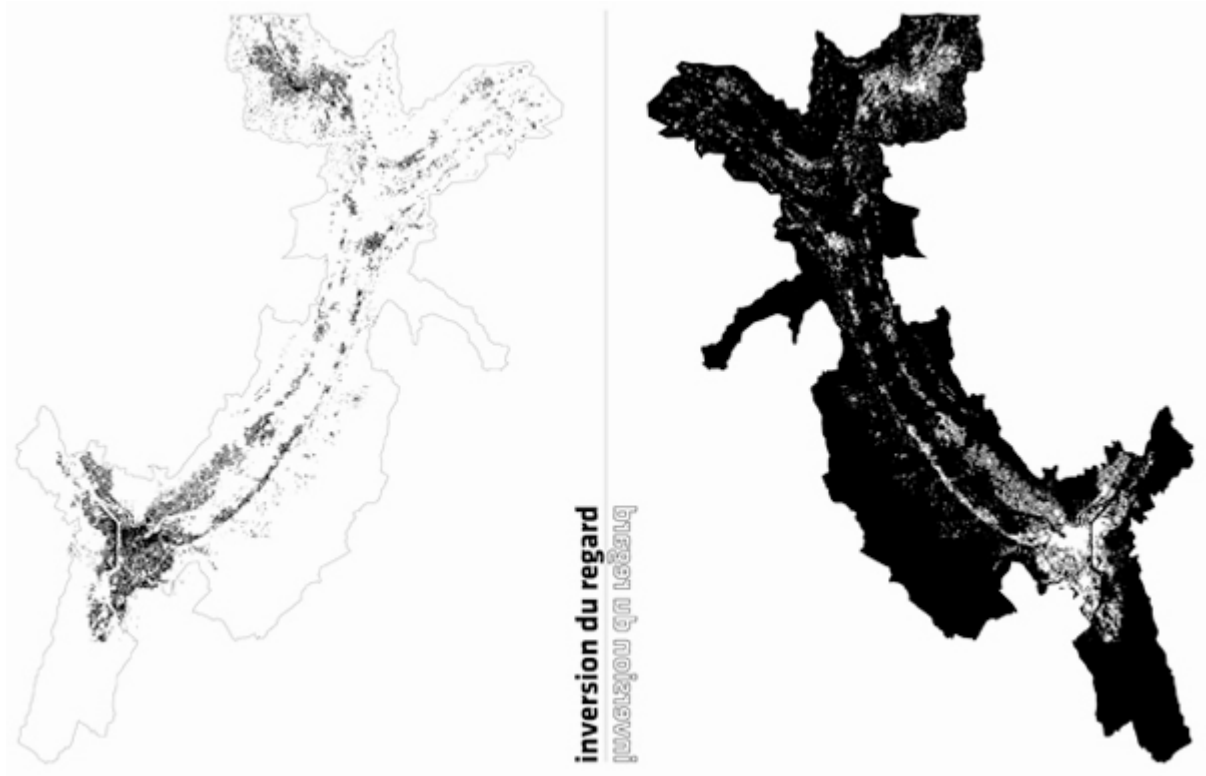
One of the fundamental points to be recovered in comparison to the PFE (Projet de Fin d'Etudes) developed in France, was that of put together one year-old job, trying to individualize and to describe a method that could hold together and continually cross the different scales: different territories and actors able to communicate and to enter the project with the same "words."

Wish is to be able to section with an only line the valley as the building, imagining and looking for that thread that holds together these pluralities through an articulated but consistent logic.

The project of the big scale, or better of the different scale was the main theme developed in the master at the ENSAG and that I decide to go into.

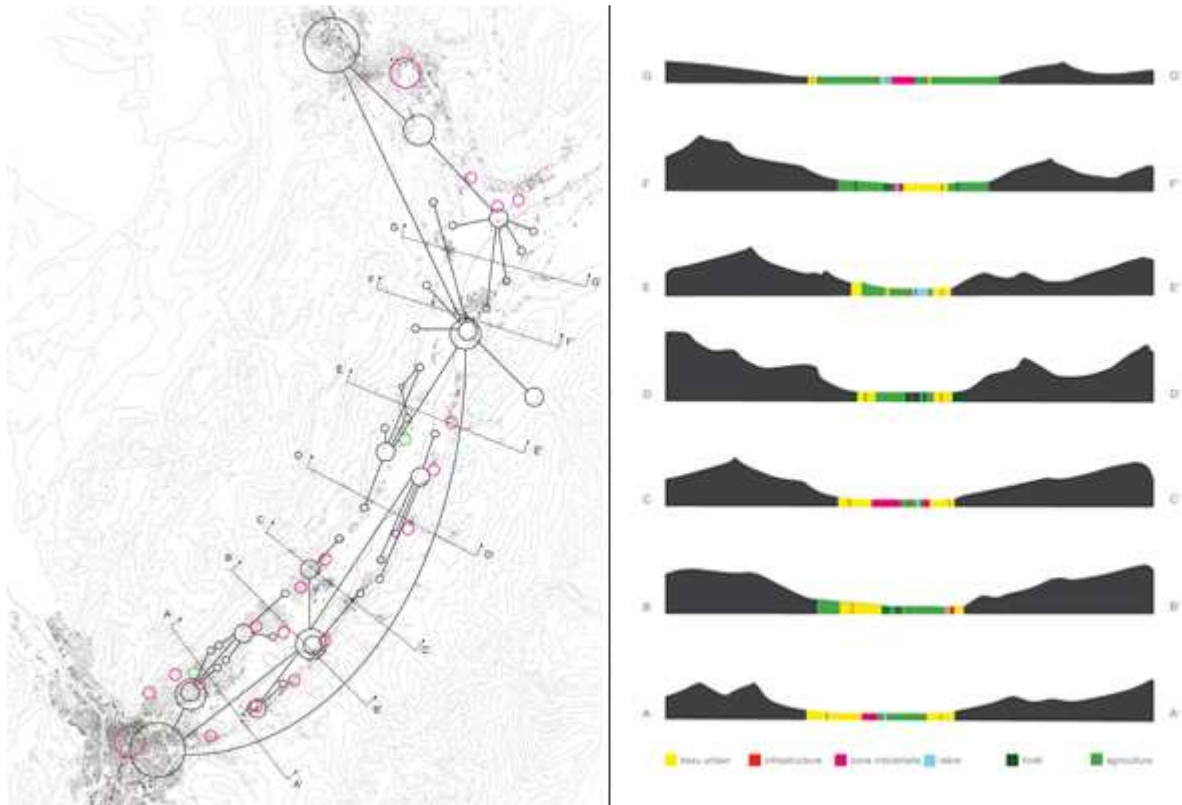
The Grésivaudan Valley, situated between Grenoble and Chambéry, is one of the best European territories for an analysis of the new ways of life and installation that are characterizing the continent (but that perhaps sink their roots in the American culture. The choice of this territory allow me to bring forth a mutual approach between the theoretical study of the city and the reality of the context, where the first one constantly tests the second.

The approach at this work is the overturn of the perspective as a new point of view looking at the big scale project.



Methodological matrix

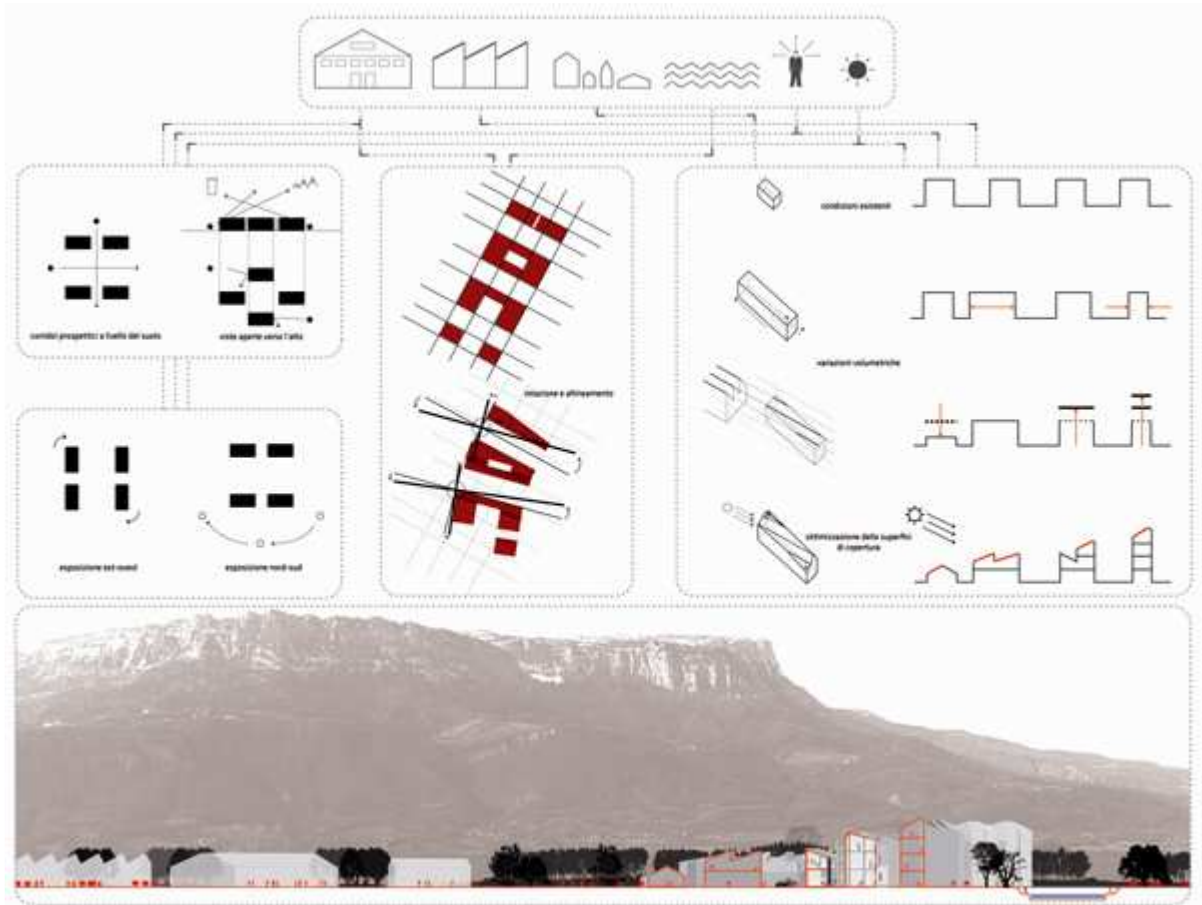
The idea is that to face the territory setting as a base for the reflection and the analysis its open (not built) spaces, considering the social relationships as material of project . This element, despite of ts immateriality, it is able of to assemble, to show or to isolate some fragments of territory.



Territorial analysis: sociability network and ground's sections

Starting with a common territorial analysis, four projects are developed thought as a fan of possible solutions, stings of impulse inside the valley. They support and open a reflection dealing with the new places of sociability at to different scales. These places change according to the use and to the way to live the territory. To try to imagine a new type of public space brings to the necessity to strengthen the dynamics of formation and development of the local social networks, to give them the possibility to find place in this new form of urban space. A hybrid public space connected both to the local and to the global network, constituted from physical aspects as from virtual realities.

In the case of the developed project in Pontcharra, I tried to let emerge the necessity to perceive the complexity of a place, the accumulation of his sediments, for subsequently be able to decide which aspect to underline and to transmit through the architecture.



Rebuild the territory

The nucleus of the project is a decentralized area between the Breda and the pole of the craftsmanship.

Its strategic position and the new structuring of the public space allow the connection between the spaces of the new installation and the urban linear park that develops a function of restitching among the center city and the vast green area along the banks of the river Isère.

The final project, in this second phase is extrapolated by his important relationship with the other three individual projects (the PFE is a group work), making more explicit as the process that influence the analysis of the territorial scale can also enter in an architectural dimension, without losing important aspects in the translation of two apparently different languages.

For further information, e-mail:
Andrea Revello: andriereve@hotmail.it