

POLITECNICO DI TORINO  
SECOND SCHOOL OF ARCHITECTURE  
Master of Science in Architecture  
*Honors theses*

---

**Building Materials: The Paints**

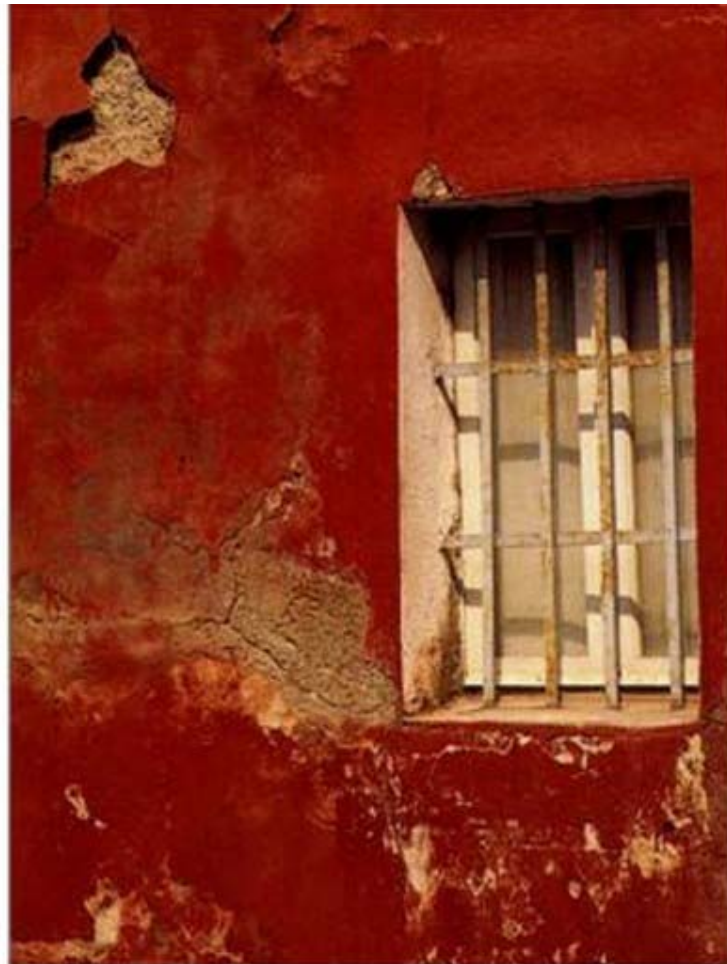
by Mariaelena Patrocino

Tutor: Nuccia Comoglio Maritano

Co-tutors: Giovanni Canavesio and Jean Marc Tulliani

The thesis has analyzed the existing data on paintings like buildings materials, in order to create rising of “guide to the choice and to the execution of finishes of the facades of the buildings” in plaster.

This study has evidenced the existence of many published technical-commercial banns from the same producers of paintings and varnishes, while rather limited it has turned out the technical-scientific literature on the argument.



Disintegration and separations  
caused from absorbed humidity  
and for ices actions and thaw

The collection of all data is a departure in order to realize a protocol for the choice and the application of in any case possible the suitable painting. One first phase of job has analyzed and described of the configurations that plaster it can assume, in particular:

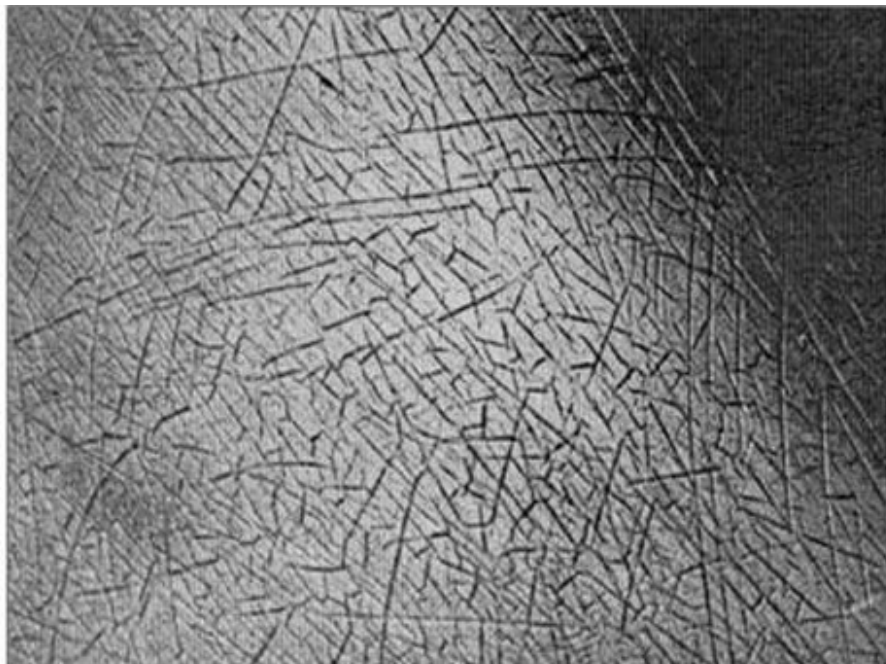
- definition of several the types of plasters existing and of their members;
- location of the techniques of realization of it plaster and final diversity of texture: traditional techniques and modern;
- definition of the types of alteration possible in the plasters;

To this description of the possible supports the same operation reported to is continuation varnishing products:

- description of the varnishing products: binders, pigments, charges, solvents, it points out to you;
- analysis of the types of varnishing products: it arranges inorganic minerals or (silicate, lime) and arranges organic (acrylic, silanes, siloxanes, silicone resin emulsion paints);
- relative analyses of norms and laws to the varnishing products;
- methods of application of the systems and the antiche and modern painting techniques.

In conclusion, it has been attempted to define one relation between superficial application and varnishing product: new supports or already painted, in external or inner atmosphere, suitability of the support, compatibility of the members or application of cycles of conversion.

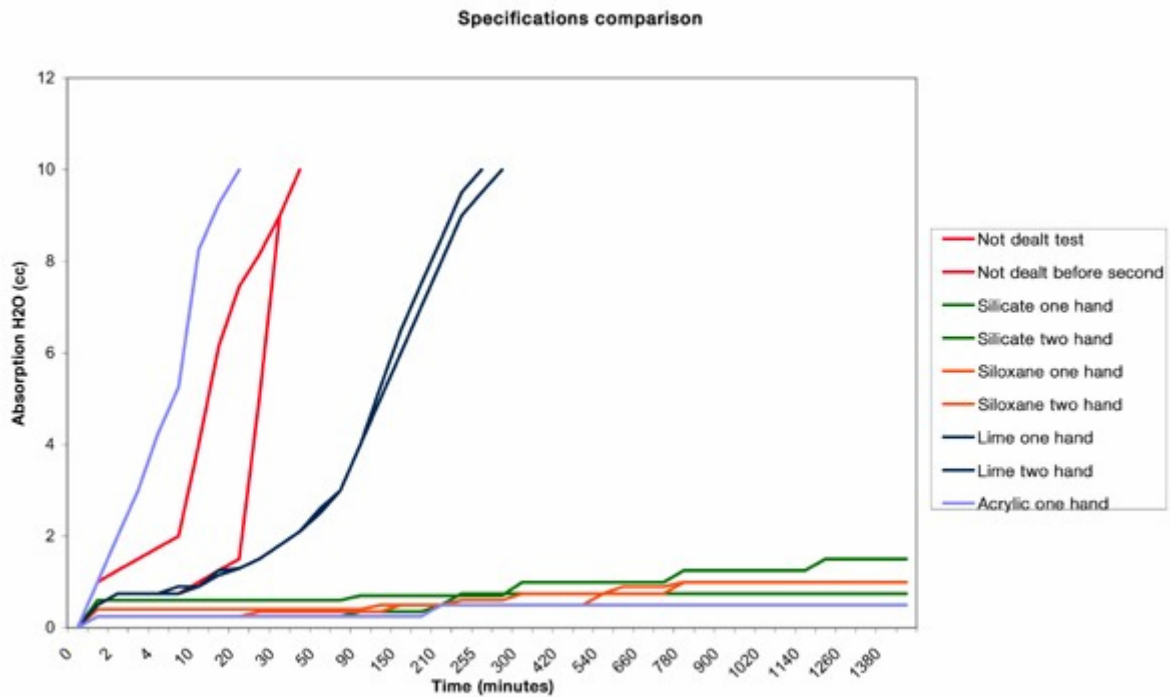
This operation has carried to try of to make clarity between the technical words on the argument, therefore reference has been made the Norms UNI and Normal, authoritative instruments of job in merit.



Checking (or superficial crack or reticulated crack  
[EN ISO 4618-2 : 1999 point 2.13])

It is therefore joints to the choice to realize a glossary for the location, the search and the comparison of afferent terms to the argument.

From in then the job it has developed one here short part “experiences them”, trying to apply the products studies to you on not traditional supports: realized in laboratory one sampling of bricks in earth stabilized, second the techniques used in a developing countries, on they have been apply you several the types of painting, to fine to estimate of theirs it upgrades them employment like protecting covering. In particular the characteristics of absorption of water of the system have been taken place “earth-painting” in relation to a sure period of time.



For further information, e-mail:

Mariaelena Patrocino: [elena.mparch@gmail.com](mailto:elena.mparch@gmail.com)