

POLITECNICO DI TORINO
SECOND SCHOOL OF ARCHITECTURE
Master of Science in Architecture
Honors theses

New Urban Scenes – Projecting in the 22@

di Davide Silvio Gigli

Tutor: Agostino Magnaghi

Co-tutor: Luca Dal Pozzolo

In the transformation of the town, subsists a relationship between the urban planning and the architectural construction. This relationship dwells in the freedom and in the obligations that urban planning allows to expressive possibilities of architecture. Barcelona's transformations articulate through the following of different urban plans, with different ages and natures. In which way did these plans contribute, or not, to town's transformation? What enduring signs did they leave? How does the built architecture relate with those?

To reply this questions isn't enough to know every standards and rules of each plan, the theoretical approach and the practical consequences. We must own an overview on the processes and events that have featured, generally, the town transformation. This research allows to understand the general character of the project's sphere, inside a urban reality that is the consequence of a superposition of different layers; the result of this superposition is not linear and become ambiguous.

The necessary analysis to read this "stratigraphy" should be a process's analysis, a morphogenetic analysis of the actual territorial configuration. Through the reading and interpretation of the process we can build some models. They try to create a casuistry, a database of problems and solutions that should be studied to find answers to contemporary situations.

Barcelona is a dense and, at the same time, fragmented city, with a troubled story, made by many changes, so only through consciousness of the basic steps of its journey we find the foundations to build our vision of its sceneries.



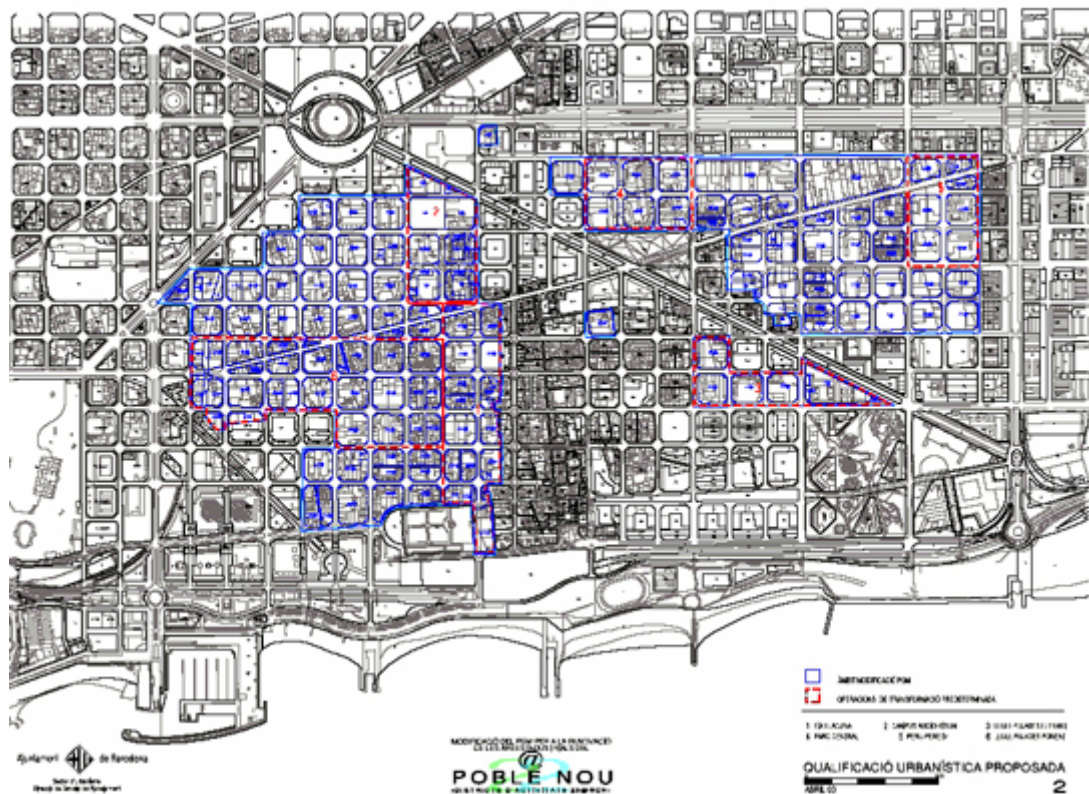
Project's area – aerial view

The project's area ranks inside the 22@ plan, sub-set of the M.P.G.M. (Modification of the Metropolitan General Plan) that defines the sphere on interventions and the ways to operate in the entire metropolitan area.

For that, inside the sub-set 22a, with industrial orientation, of the actual plan, will be created the sub-set 22@, that will have its own instruments for planning and developing.

This modification regards the re-conversion of industrial used soils of Poblenou district.

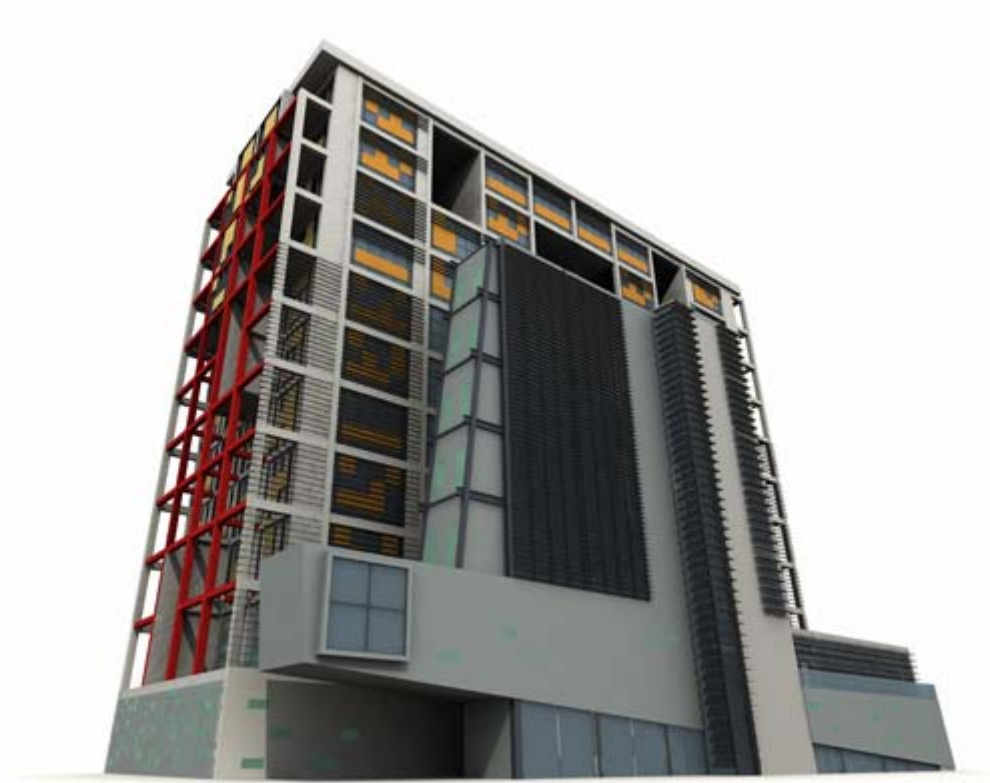
The surface of the plan enclose an area of 115 Cerdà's islands, that coincide with the 35% circa of the entire metropolitan area.



Delimitation of 22@ plan

Checked out the process of town's transformation, the technical and training aspects are defined with better details, along the different urban planning's scales. We try to understand how and how much the various scale jumps affect the architectural chooses, that sometimes are defined, by the plan, on use's destinations or structural and plant engineering's technologies, out of a mindful consideration of genius loci, of typology or existing webs. Chooses that take shape in the creation of P.E.R.I. , Special Plans of Inner Renovation, that dimensionally group some Cerdà's islands. Among this, we consider the specific sub-set P.E.R.I. Lull-Pujades Llevant, which we deepened the architectural character. After a maximal project of entire island, we restrict the ambit to a single building, which designing kept to the satisfaction of given obligations, so it has been influenced in a deep way from the previous process.

This led to define basically the surface's characters, especially the fronts, and distributive aspects, having to stick with given shape and volume.
So the reflection concerns about the difficulties of a design bonded by specific obligations to apply to really hypothetical sceneries.



Project's rendering

For further information, e-mail:
Davide Silvio Gigli: mr_dado2005@hotmail.com