

**History and nature in the project of an architectural plan.**

**Rome, Settebagni, between the village and the river: a park of culture and “free time”**

by Alessandra Bertolino

Tutor: Costantino Patestos

Co-tutor: Francesco Algostino

The project involves an area situated in the northern part of the urban zone of Rome.

Placed outside the Grande Raccordo Anulare, this area covers the section of the consular road Salaria, which is included in the built-up area of Settebagni.

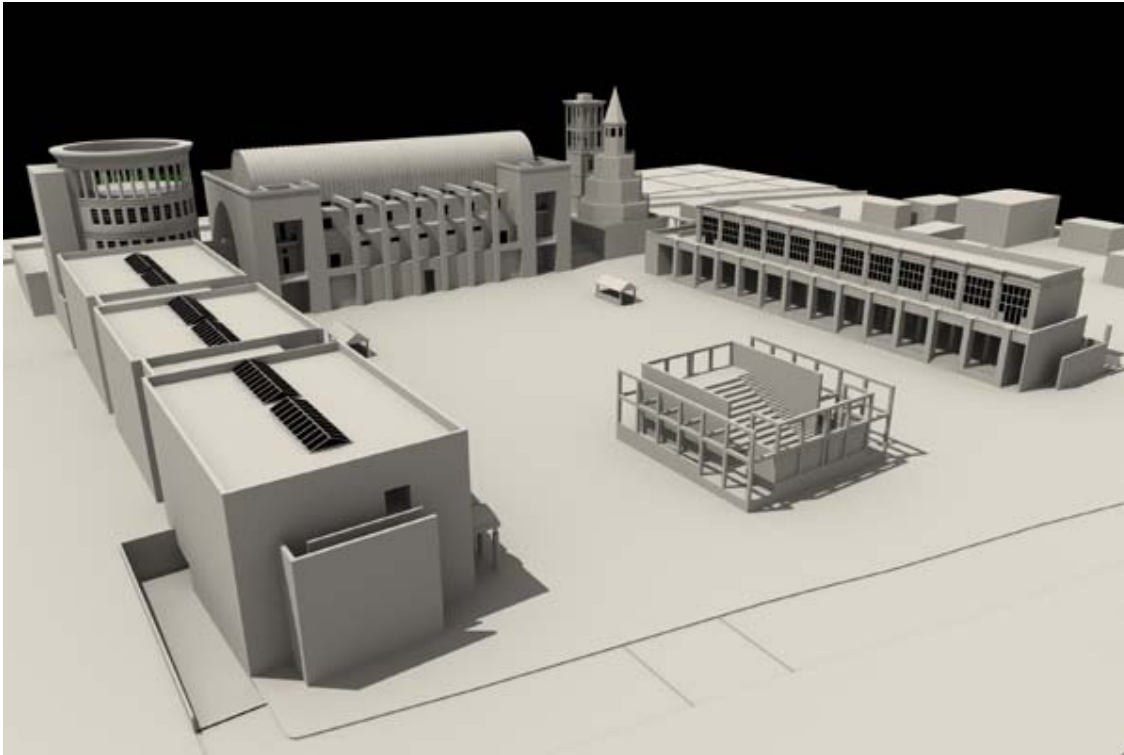
This urban area belongs to a specific district of Rome (Municipio IV), the so-called Marcigliana. The landscaping is characterized by a wide plain beside the Tiber, delimited by the Vejo and Grottarossa relieves in the West and by the Marcigliana and Castel Giubileo hills in the East.

The area involved in the project grows on a plain covering about 19.000 m<sup>2</sup>. The consular road Salaria, which stands at the same height of the plain, is the most important axis of this built-up area; here we can find very few local public services. The understanding of this project deals with the new image given to a portion of the suburban landscape, which was left unfinished and poorly set off both on a formal and functional point of view, and then characterized by the presence and the fusion of the country and the city, between the open air and the water.



The project has been developed in two directions: the first one is connected with the urban dimension of the project itself; the second one refers to its metropolitan characteristics. Placed in a not built and uncultivated area, the project represents both a centre of iron-rub exchange and the “backbone” of the residential area.

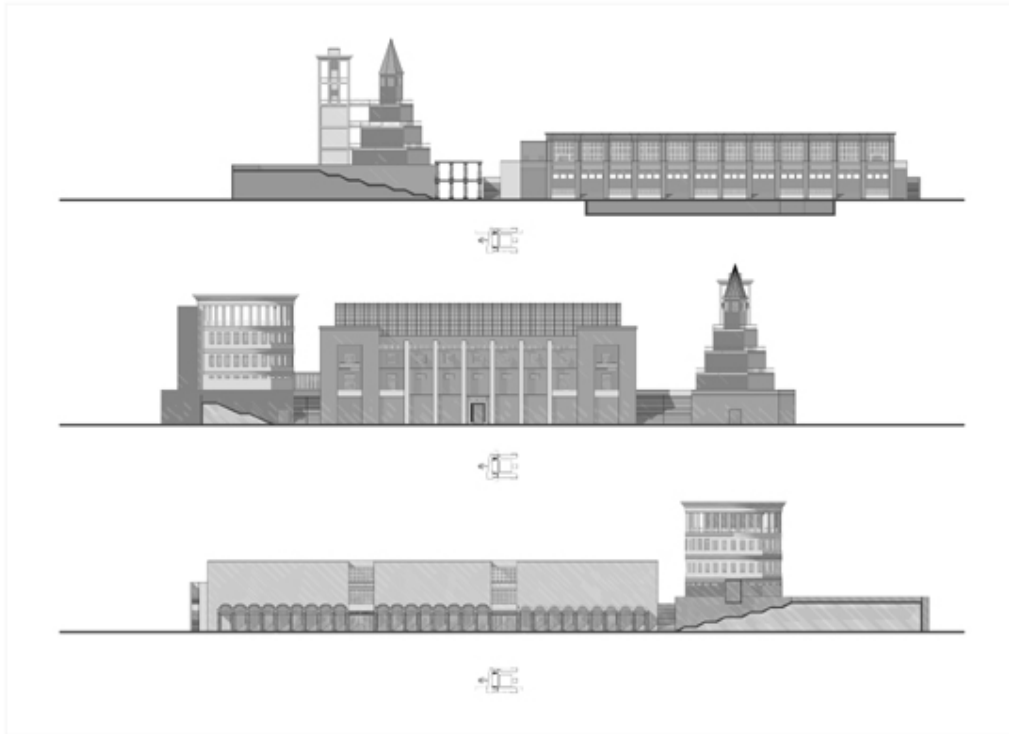
The territory is based on specific architectures, which consist of the most important axis of the project.



The project is composed of architectures that may stand alone, but here they watch well together to give birth to an unique shape: the “piazza” (the square). It assembles different functions, above all public services, in a very rich formal spaces, like a civic room, two cinemas, a department store, same rooms for temporary exhibitions, two panoramic towers, an outdoor small theatre and an underground parking.

As far as regards the composition, the project is based on geometrical connections and a module defined by the square dimensions, in opposition to the very irregular morphological schemen of the built-up area.

The project deals with the composition of a square. In the plan it is represented by a square, which gives the idea of the Forum, of the big public enclosure, seen as an unique place with a regular internal shape.



Pictured by an open architecture developed to the village, the square is a place where the main public functions are operated. It is the “urban heart” of the village. The project involves also a green area, in which a public river park takes place. It is situated on a particular part of the Tiber, where it forms a loop one kilometre deep. The park plan has its origins from the axis of place-open courtyard.

The link between Settebagni and the Tiber, how two well different parts, generated and unique axis, which is the backbone of the project. Along its length, different architectures build a particular route.

For further information, e-mail : [alessandrabertolino@yahoo.it](mailto:alessandrabertolino@yahoo.it)