

POLYTECHNIC OF TORINO
FACULTY OF ARCHITECTURE
Degree in Architecture
Honors theses

Italian Racing Cars Exhibition

by Sandra Ferroni

Tutor: Oreste Lori Gentile

This thesis regards the architectural project of spaces aimed at showing Italian racing cars in a building of great historical and architectural importance, the "Dora" Docks of Turin.

It may seem unusual to start a discussion on a project about exhibiting cars with a chapter on integration of different arts, but the choice is explained by the thesis subject itself: trying to show how the creative and planning process is enriched by topics and surprising new meanings by the different links and stimuluses that arise from this integration of different arts.

The first part, dedicated to the integration between different arts (architecture, painting, sculpture, music and dance), analyses the relationship between instruments and methods of the various arts, comparing the style of theirs different forms of expression.

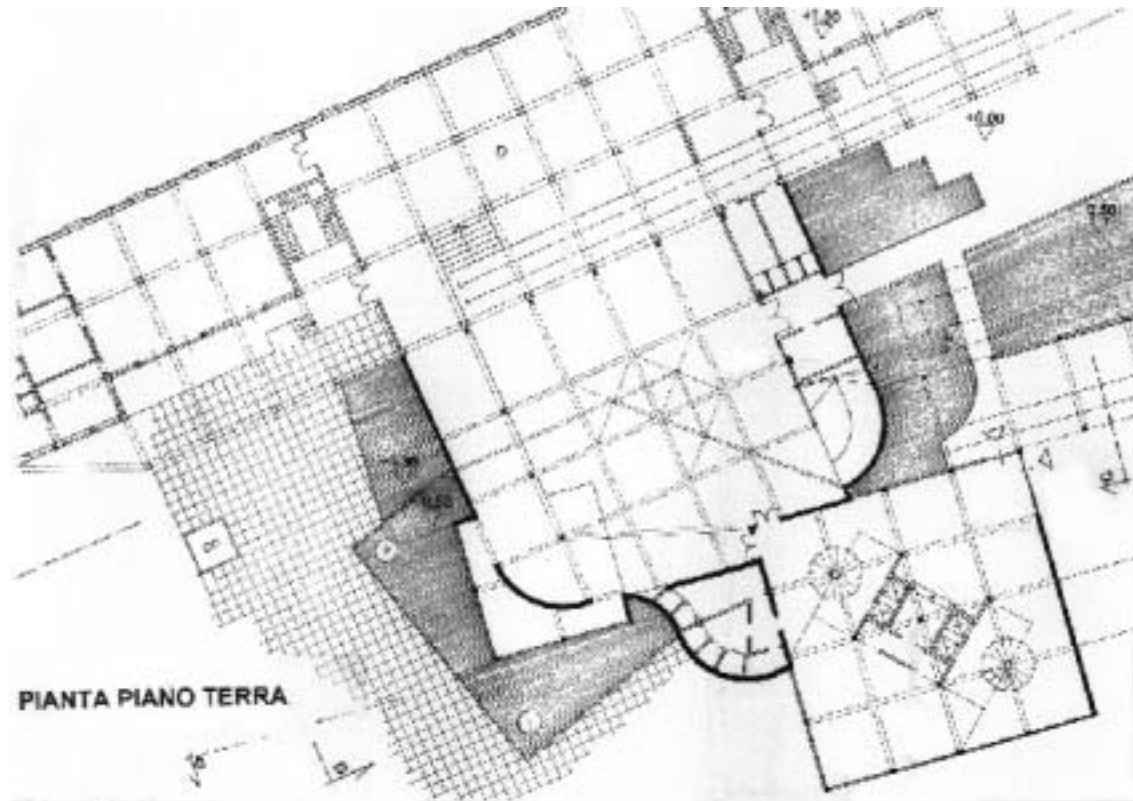
The second part is about the historical analysis of "Dora" Docks of Turin. This includes: short accounts on the transformation process of foraneo territory further duty encircled; the administrative decisions that were done in 1912 and the need to create warehouses to preserve and keep stock, the description of the project made by the engineer Fantini in 1912 and the following enlargements done by the society of the "Dora" Docks of Turin to capitalise of complete utilisation of space by various mediums.

The "Dora" Docks of Turin is one of the first structures made using the new building process patented by Hennebique for the realisation of beams and attics at the end of the 1800.

This new building process is therefore analysed in the context of industrial building and a great number of building details derived from the application of this system in Docks Dora are listed.

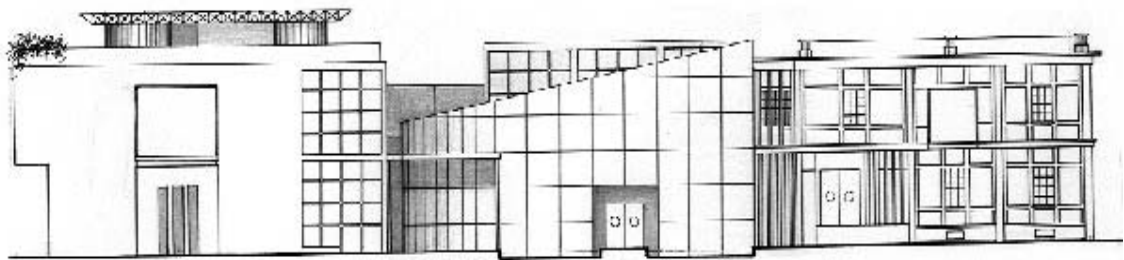
Some examples are: reinforced concrete mesh put together for making necks of building, equipped with covered platforms for the track section, parallel to the railway and connected to a roomy courtyard which has a covered entrance.

The third part of the thesis is about the Italian racing cars. A study of the different categories of car racing is carried out, considering the most important races made in Italy and in the world. The trademark, the model, the years, the circuits and the pilots of each competition are listed. A list of the more competitive Italian cars produced since the birth of automotive sport from 1896 to 1982 is provided.

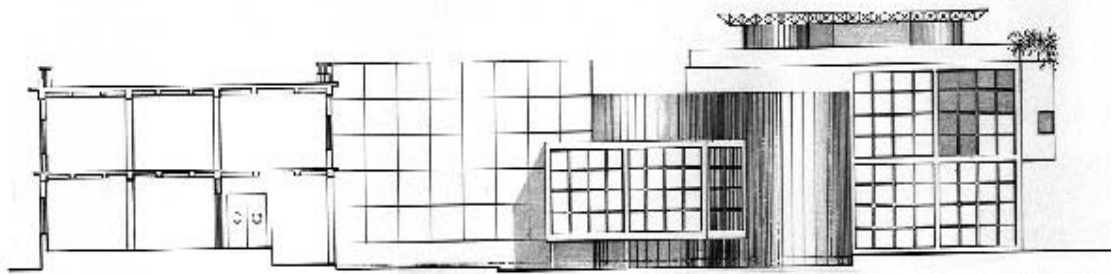


The fourth part is about the project development: the planning of main and secondary roads ones, the functions, the public service and the museum. A part of the previous design plan of the park and the principal roads is used (as it was decided by the new Regulation Plan), a new lay-out of the Docks is made so that a new position in the middle of the park is acquired, with avenues and small lakes. Many unsuccessful attempts to create a correct route have been made using only the present structure. A new structure that connect the last sleeve to the third, makes a continuous viewing route of the exhibition possible.

This new development is not only a link, but also the site for more entrance activities (stairs, lifts, ticket offices).

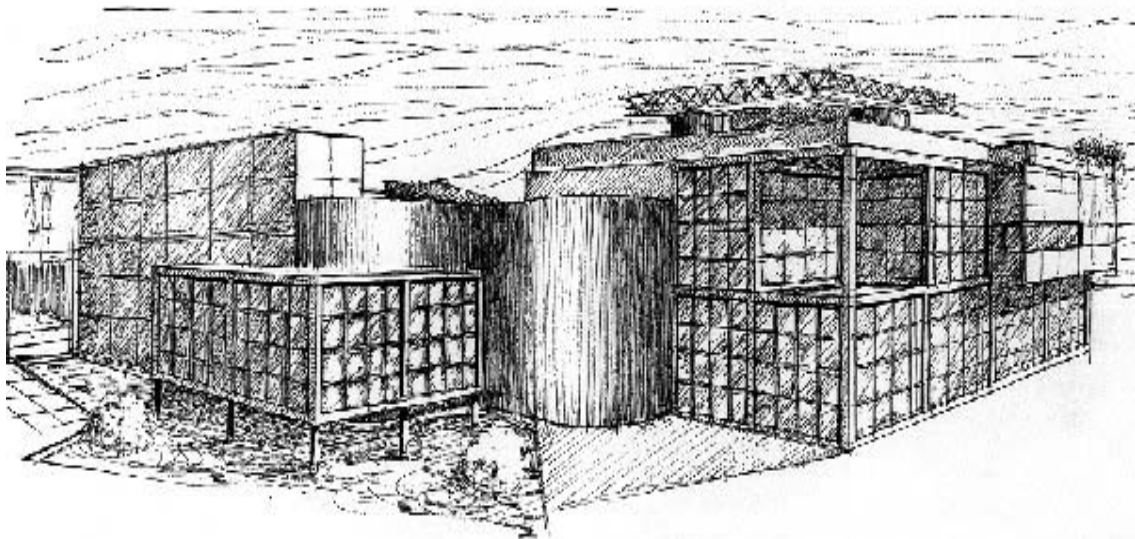


PROSPETTO/SEZIONE C-C'



PROSPETTO/SEZIONE D-D'

The exhibition route, on the first floor, is organised by theme (non necessarily chronological); the facilities of the museum and of the exhibition. Possible sources of noise, are for that reason on the first floor: warehouses, laboratories, offices, changing room, library, commercial structures and refreshment areas. Among the events, cultural and leisure, that the public can enjoy, is there "performance". This particular event can take place in a flexible area that can be transformed easily depending on the type of "performance".



VISTA PROSPETTICA DAL PARCO

Cars can easily be transported in the middle of the theatre area using a rail track near the platform and under the present portico.

The fourth sleeve's doors and windows have been destroyed to enlarge the performance area and to improve viewing.

The Docks, with their mesh of pillars, are a suitable stage for many types of performances: ballets, concerts, fashion shows.