

The sports plant In the Beinasco County: a retraining hypothesis

by Ilenia Ferratino

Tutor: Elena Tamagno

External tutor: Pettene Sport Plant Engineer

Starting from the analysis of the local sports plant situation, the plan proposes to realize a new swimming-pool plant that might be able to satisfy the request of this activity, inserting it in this local area characterized on one side to be a really changeable one, while on the other side to be an historical and natural relevant area.

The plan assumes as a starting point the studying of two very important elements that define the needs on Beinasco County:

- an inquiry on the sports plants situation in this County to underline anything useful to define the "pressure of the local sports plant demand;
- The evaluation of the sports system in this local area.

The County administration needs lead to some inquiries, by contacts with many sport societies and with people working in the CONI, with the aim to define the number of the consumers of the sport plant and the activities time-table in the entire year.

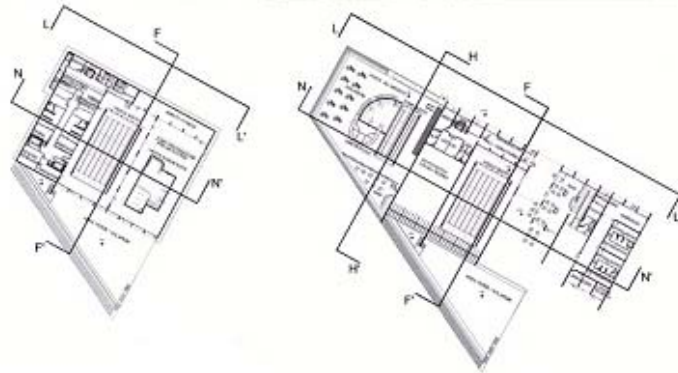
The main aim of this thesis is to determine the necessary elements that will optimise the local sport system by retraining the existing sports plant and building new ones to satisfy the sport request.

It's clear how important is to plan all the necessary interventions considering all the local realities and the future ones.

The analysis of the existing situation pointed out that in the Beinasco County it is possible to practise many different sports activities for all the categories of the consumers. The sport offer is covered also by some private plants (tennis, indoor soccer, fitness, etc.), while it is clear the lack of building for the swimming activities. It is useful to remember how important the swimming activity is not only from an healthy point of view, but also as it is by far the most popular sport activity.

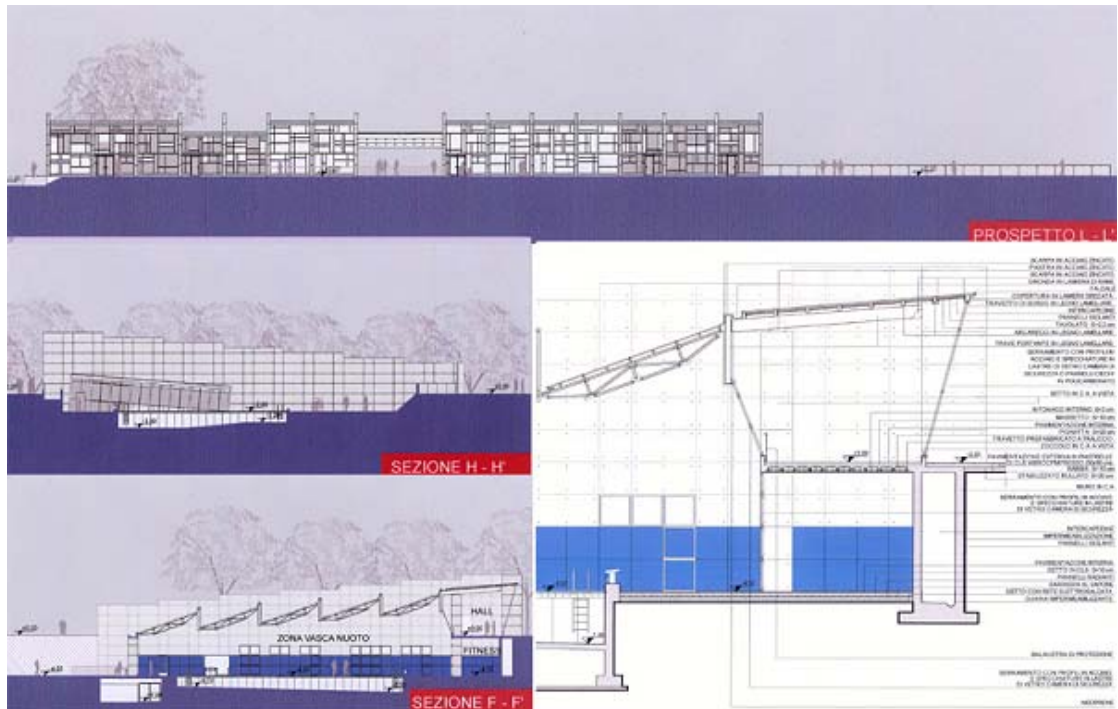
At the moment the local county sport system is made up with four main sport plant. Starting from this studying it is possible to programme some interventions to optimise and retrain them and to take the decision of building a new swimming structure in Beinasco.

After the analysis of the P.R.G.C. and The River Park Plan it was possible to find an area that might be suitable to building this swimming-pool. This location seemed to be the right one also due to the fact that it is insert in an existing park and sports way already considered in The River Park Plan.



General, land level and underground plan where it is possible to see the dressing-rooms, the outside and inside pools, the restaurant-pub and the indoor soccer lock-rooms

The proposing formal solution offers a new generation sport plant due to the polifunctionalities and aquatic activities considered as fun and healthy moments. This plan (insert in the area, the formal shape of the building and the used materials) shows the aim of reducing the impact with the existing environment, making the integration within the river park, both on the naturalistic and historical point of view.



Frontal view, transversal sections and detail section of the entrance hall and of the underground pools.

This means that is the park, the nature and the landscape to be underlined and not the building of which some strong element (concrete septum, windows modularity) characterize the entire plan.



Wood model of the area in which are inserted the swimming plant, the restaurant-pub, the indoor-soccer lock-rooms and disabled ramps that link the plant with the Sangone river.

For further information, e-Mail: leferratino@hotmail.com

Maintained by:
CISDA - HypArc, e-mail: hyparc@polito.it