



POLITECNICO  
DI TORINO

# Honors thesis

---

COURSE OF

DEGREE IN ARCHITECTURE CONSTRUCTION CITY

*Abstract*

## **SECTIONING THE CANAL - A BIKE HOTEL FOR THE CANAL OF CORINTH**

*Tutor*

Chiara OCCELLI  
Marco BARLA  
Riccardo PALMA

*by*

Erjon KRISTO

December 2015

## SECTIONING THE CANAL - A BIKE HOTEL FOR THE CANAL OF CORINTH

Motivated by the desire to deal with a complex and layered territory and relate to the sculptural character of the landscape and the problematic aspects of the territory through the course of the construction process, with this thesis project I will try to give a new dynamic to a territory lost and forgotten by the community, through the definition of architectural "links" between the two levels of the canal. A bike lane starting from a regional scale and extending in succession up to a broader level of the European community completes the project and gives to the Corinth Canal another dimension.

The canal by its nature is closely related to the morphology of the terrain. It does not only modifies its morphology but it reveals through the section another dimension of the territory. The cut made by the canal highlights the "layering" of the terrain revealing its history. A history made of layered rock masses born in different eras.

The geological conditions have been translated into architectural issues. But in addition to the strictly technical issues, the historical "layering" that this canal presents, contributes an additional value to it, directing me to approach this case within the perspective of restoration. The Canal as well as an infrastructure becomes a landscape of history and architecture of the earth. An organism of flows and masses, a duct of flows with different frequencies and velocities. The project is intended to function as a valve for these flows, and try to merge the dimensions of the Canal and provide visitors with a complete perception of its dimension and dynamics. A connection between the two levels is provided by an inclined projecting reinforced concrete wall hosting an elevator and the stairs. A second wall, vertical, instead organizes the bike-hotel space.

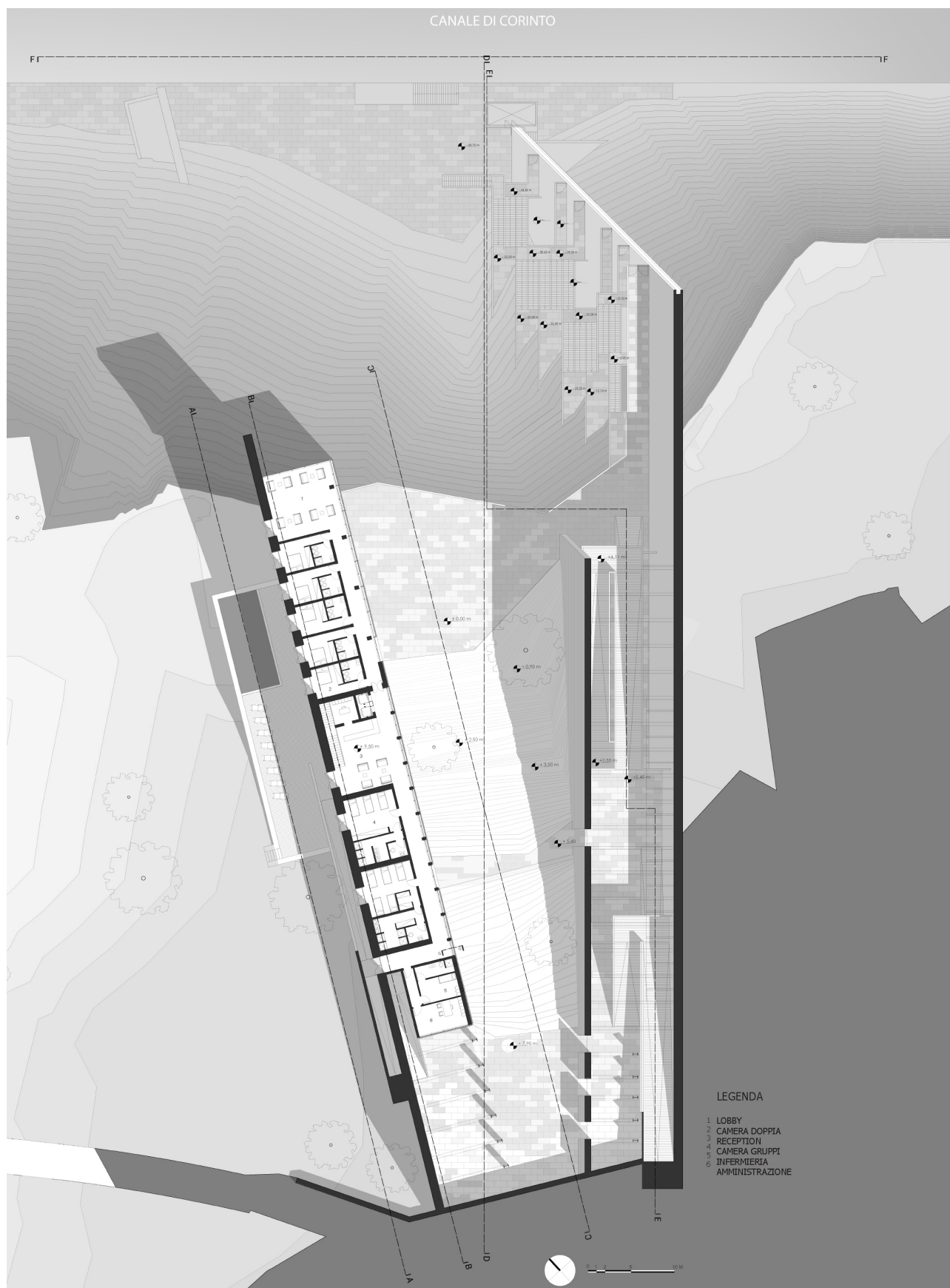
The first wall organizes throughout the structure of the distribution, starting from the sea level, with the ascent through a rack lift accompanied by a series of stairs. The visitor once arrived at the first level finds himself in the main piazza.

From here in fact the visitor can choose either to enter the bike hotel for a short or long pause or continue his path through a system of ramps resting on the inclined wall and contained in "duct" building originating from another inclined wall parallel to the first.

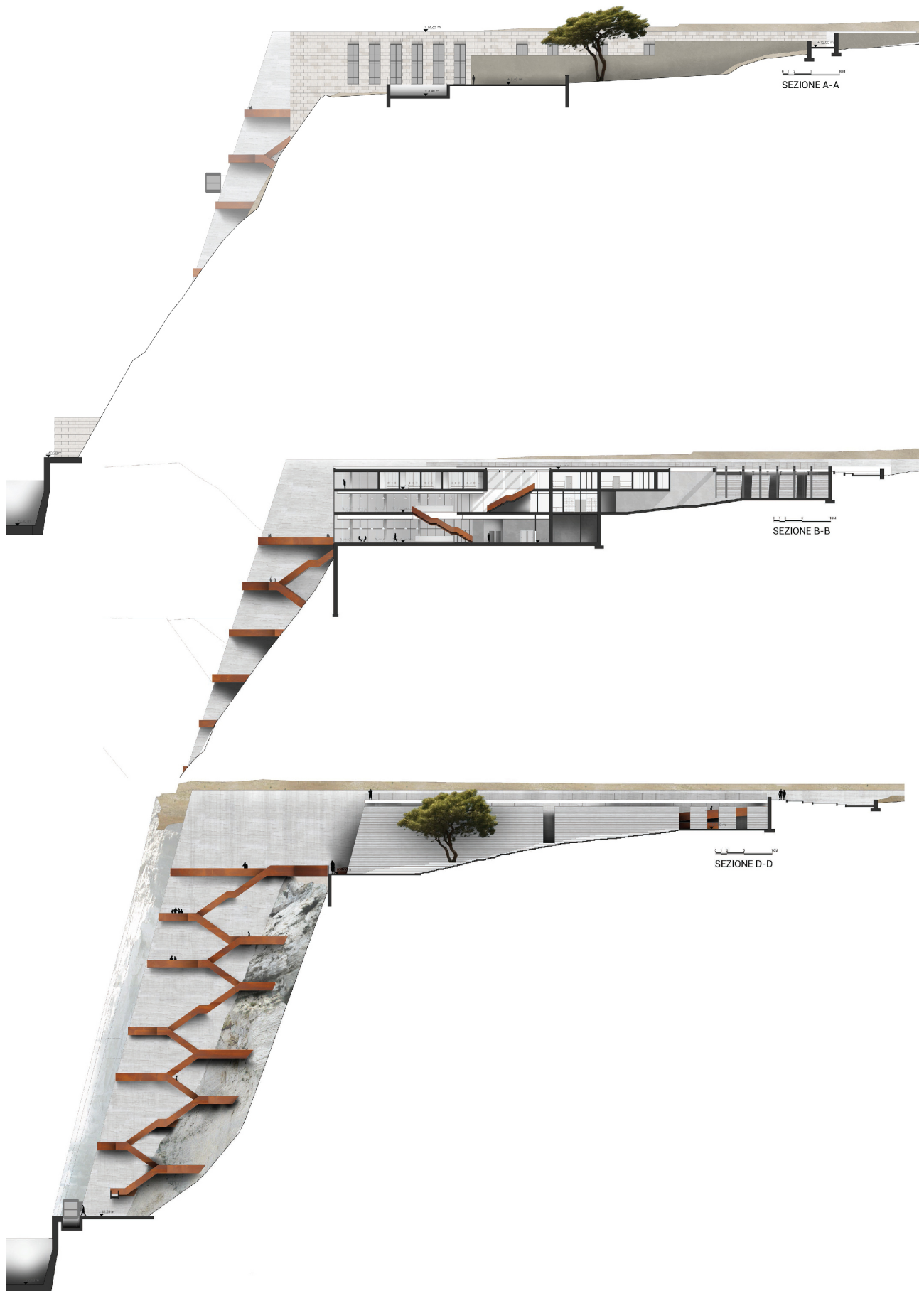
In the bike hotel structure the visitor would find the bar on the ground level with the restaurant just above, on the first floor. The rooms and the reception lay on the last floor.

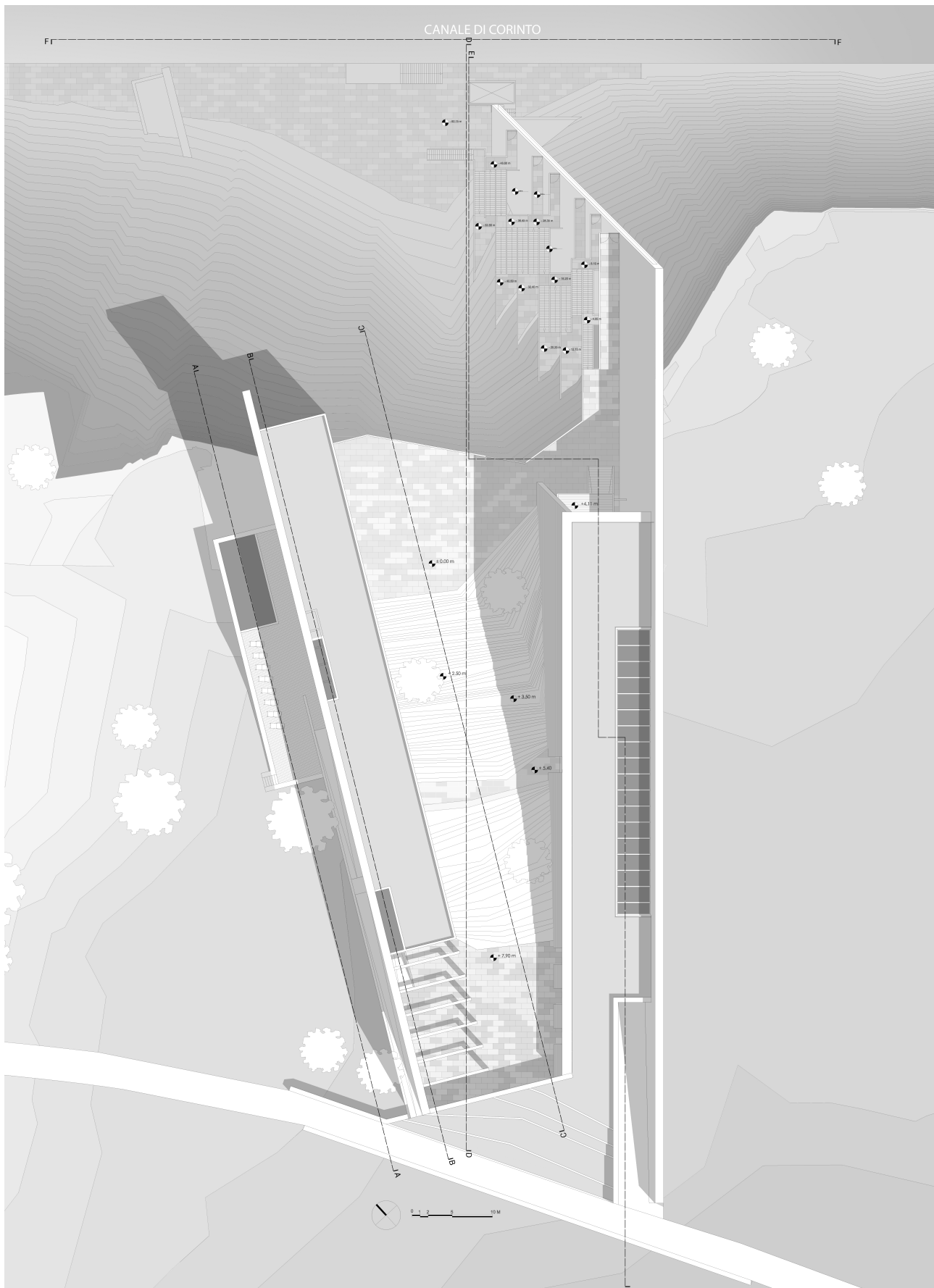
The speed and pace were two important elements in the definition of the project. The speed of the ships crossing the Canal slowly expands to the visitor. From the rack to the ramp the path takes a slow pace, which gives to the project an aspect of monumentality and a museological vocation.

Before arriving to the level of the bike path, the visitor finds himself on an intermediate level, a last chance for a pause in the shade. Leaving the structure he is under the strong Mediterranean light where the cycling path tangent to structure would lead him to his destination.



Floor Plan – Level 3





Rooftop

For further information please contact:  
Erjon KRISTO, [christo\\_08@outlook.it](mailto:christo_08@outlook.it)