



POLITECNICO
DI TORINO

Honors thesis

ARCHITECTURE HERITAGE PRESERVATION AND ENHANCEMENT

Abstract

Multifunctional agriculture: suggestions for the enhancement of Volpiano's farmhouses

Tutors

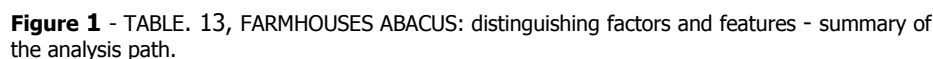
Cristina Coscia
Silvia Gron
Francesco Testù

by

Valentina Russo

September 2015

At first, it was made an exploration of the territory of Volpiano, providing a territorial focus, a description of the morphological characteristics and a series of surveys concerning the issue of vehicular and cycling layout, the green areas and the historical background of urban development. After there has been done a critical reading of the farmhouses, through a cataloging system includes information on the location, the name and description of the building, the active function with the indication of the type of goods produced (if there is a farming) and the state of preservation.



Having a large number of artifacts, detached unevenly on the territory and often not directly connected to each other, in the phase of strategic assessment it was necessary to make a choice, in order to locate an area on which to intervene with the enhancement's proposal.

The chosen area is located to the east, towards the border with the territory of Brandizzo, and includes the farmhouses named Pantalina, Amaveglia, Fourrat, Germania and Prono, and the adjacent lands predisposed to the agricultural job.

From the agricultural sector emerged an image of lowland agriculture, traditional and intensive. The challenge that accompanies the project proposal reflects the will to find a new way related to agriculture and, specifically, to give life to a reality in which *tradition* welcome *innovation*. Innovation that means production and processing of a typical product identified in hazelnuts due to characteristic of the soils.

In addition, innovation that is configured in the promotion of a multifunctional agriculture that produces primary goods on the one hand, ensuring the feeding of humans and animals, and produces goods intended as a service for the community on the other side.

The purpose is to be able to arrive to attribute, in the future, a recognition to the territory of Volpiano, both in terms of production of a typical product both in terms of production of social values.

In the planning phase have been developed three possible scenarios, which differ in the percentage of land respectively allocated to traditional crops (corn and then forage plants), innovative crops (so hazelnuts) and social farming (then allotments for education and therapy, space for aromatherapy, hydrotherapy pools and trails barefoot).

In conclusion, it has been depth the intervention on the Germania farmhouse (for which is provided the settlement of a structure for hippo-therapy), both from the point of view of the distribution of internal and external spaces both from the point of economic feasibility, understood in terms of investment costs for the restoration, commissioning efficiency and new function, and in terms of time for the enhancement works and for the start of business management (costs and revenues analysis).

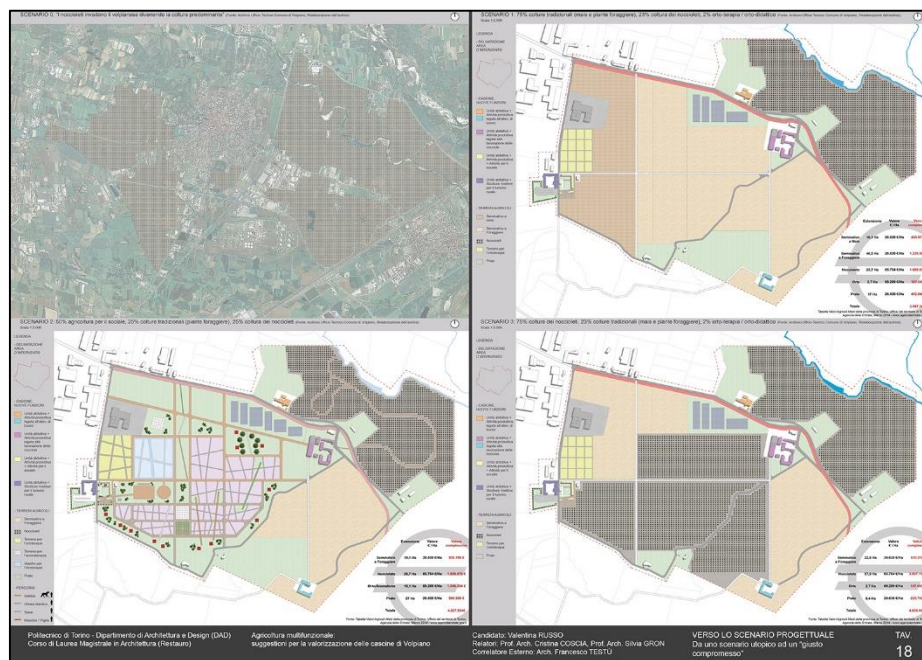


Figure 2 - TABLE 18, TO THE PROJECT SCENARIOS: from an utopia to a right balance.

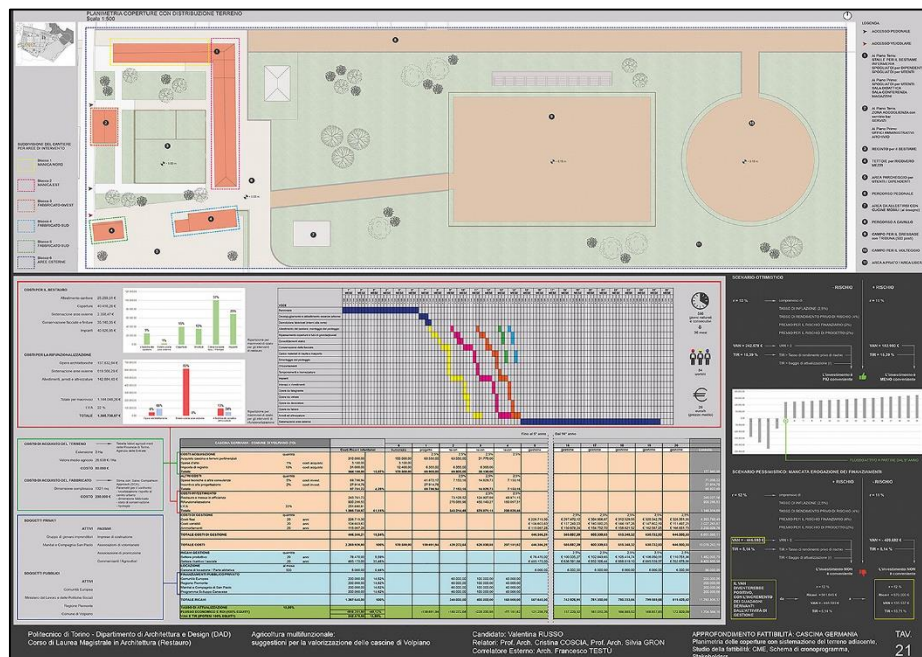


Figure 3 - TABLE 21, FOCUS ON GERMANIA FARMHOUSES: covers planning and adjacent lands layout – feasibility study: estimative computation, time schedule scheme, stakeholders.

For further information please contact:
Valentina Russo, vale.russo_vr@libero.it