



POLITECNICO
DI TORINO

Honors thesis

MASTER OF SCIENCE IN ARCHITECTURE FOR CONSERVATION

Abstract

*O apito em novo tom. The whistle on a new tone.
Redevelopment of the ancient industrial complex
"Companhia Fiação e Tecelagem São Pedro".*

Tutors

Chiara Lucia Maria Occelli (PoliTo)
Regina Andrade Tirello (Unicamp)

by

Giulia Vercelli

December 2014

This thesis is the result of a fruitful international experience held at the State University of Campinas, Brazil, to achieve a double degree in architecture.

The choice of the topic gets into the debate and research work related to the industrial heritage, and gave rise from the recognition of the economic and social importance historically played by the ancient "Spinning and Weaving Company São Pedro" in the city of Itu in Brazil.

The goal is the study to investigate the role of place of memory of the factory, through historical research, understanding of local customs and the urban context, following a path that goes from a detailed survey up to define the lines of action and the project proposal.

The "Spinning and Weaving Company São Pedro" officially began its activities with textile production in 1911. The textile factory brought to Brazil technologically advanced machinery and Europeans technicians to adjust the production and train the local labor force to become the next generation of engineers. The factory was the largest weaving settled in Itu and contributed to the projection of the city on the industrial scenario of São Paulo's State and even Brazil.

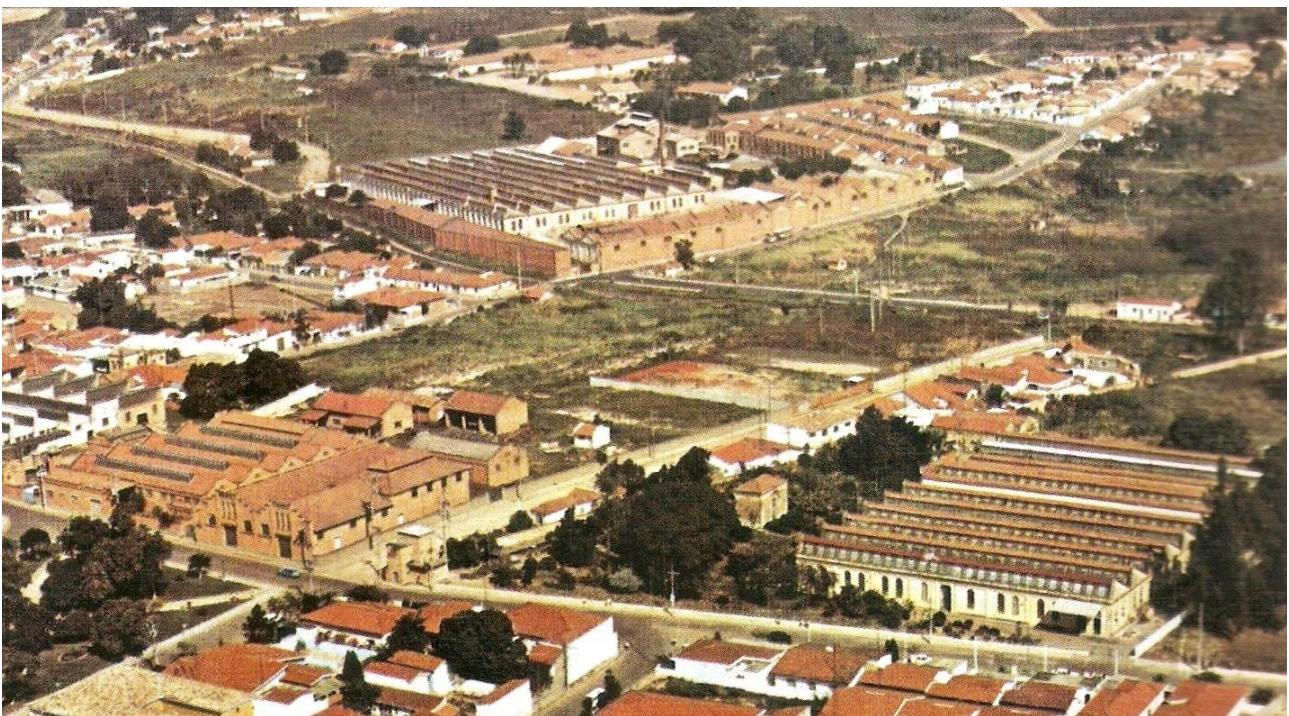


Figure 1: Aerial view of São Pedro Factory in the 70s.

The "Spinning and Weaving Company São Pedro" undoubtedly belongs to the memory of the city and is deeply rooted in the socio-cultural and architectural heritage.

Today the São Pedro Factory re-emerge in a new urban landscape with the ability to play a major role, offering himself as a potential haven for new uses and equipment to

improve population's life quality, while the city is devoid of public spaces and urban centers in line with the territorial expansion undergone in the last years.

Believing in the need for a strategic plan to promote activities and priorities of the city, and identifying in the São Pedro a huge potential as a transformation tool of urban dynamics and representative of a turning point for the growth the city, the project proposal was articulated by:

- A. Interventions in the object scale, focusing on the re-functionalization of the factory, taking account of its morphological, structural, functional, cultural and social aspects but also of the urban environment development and the strong commitment of the city to the preservation of historical and architectural heritage.

- B. Interventions in the urban scale, giving the district a new public area. This will be the motor for new urban transformations involving the integration between the historical center and the modern fabric. The proposal is to link the Linear Park, under construction along the Brochado creek, with the industrial heritage, tying the pedestrian path to the internal circulation of the factory and fostering new appropriation of public space. A system of green squares will connect the plant to the center by a pedestrian path through open spaces inside the blocks that separate the factory from the Cathedral Square.

The determination and distribution of new uses has been guided by the knowledge of local needs and the city as a whole. The activities appear strategically divided in order to attract a diversity of people, making this new "piece" of the city of 25,000 m² increasing the local urban life and integrating to the existing urban environment.

The entire complex will be administered by the House of the District with the association "*Basta un ritaglio – Banca del tempo a Itu*", with the aim of encouraging meetings between local residents through the mechanism of exchange. The association's activities are open to all, especially to young workers and students, and occupy all the spaces of the complex, such as collective gardens, the atelier, the auditorium, the cycle-craft workshop, the cafeteria and the bakery.

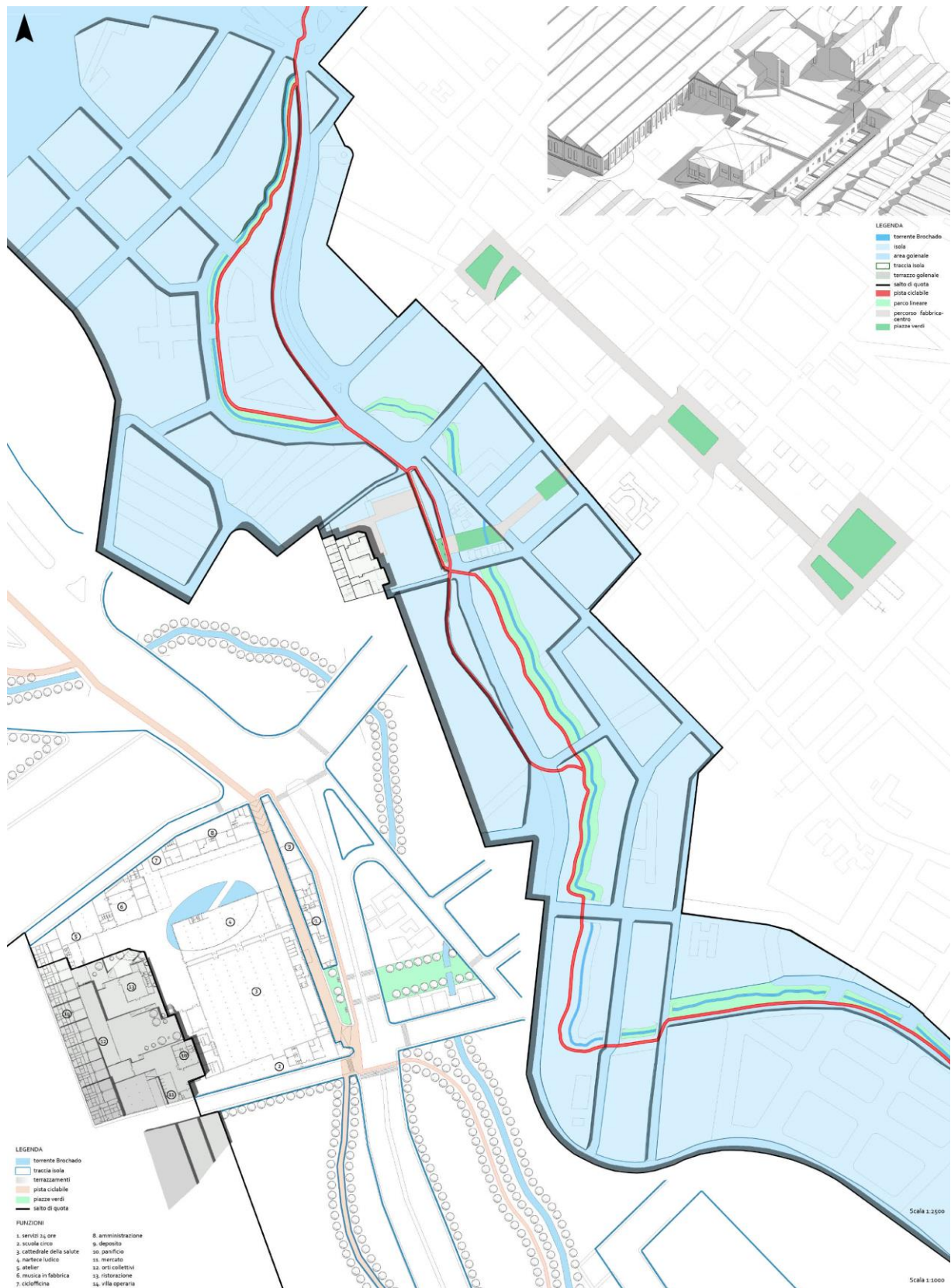


Figure 2: Ground interpretation and urban-scale interventions with the bike path along the Linear Park and the system of green squares linking the factory to the old town.



Figure 3: Masterplan project of re-functionalization of the old factory.

For more informations:
 Giulia Vercelli, email: vercelli.giulia@gmail.com