



POLITECNICO
DI TORINO

Tesi meritoria

**Degree in Master of Science in Architecture
(Construction)**

Abstract

**SNC
Stockholm Nobel Center**

Supervisor

Prof. Roberto Apostolo

Candidate

Enrico Nicli

Co-supervisor

Prof. Giuseppe Roccasalva

Graduation session December 2014

The choice of my Master Thesis subject has been a problem with no simple solutions. Whether dealing with a project thesis was out of doubt, choosing the project to develop was not.

The idea was that of dealing with a building with strong public features that had to be integrated into a prominent urban context.

During my five years at university, and specifically in the last two years of my Master Degree, my interest towards architectural design has grown hand in hand, somehow unexpectedly, with the development of urban scale considerations through the experimentation of investigations and work methodologies which I strongly wanted to employ in my Master Thesis too.

Among the many available options, the choice has fallen on the competition high public interest in a top-level urban context.

Section



The competition announcement required the design of a building promoted by a private Foundation (Nobel Academy), but with a strong value and impact on the public sphere. In this context, high attention was paid when designing the building at an urban scale and to its relation not only with the close environment, but with the whole urban context.

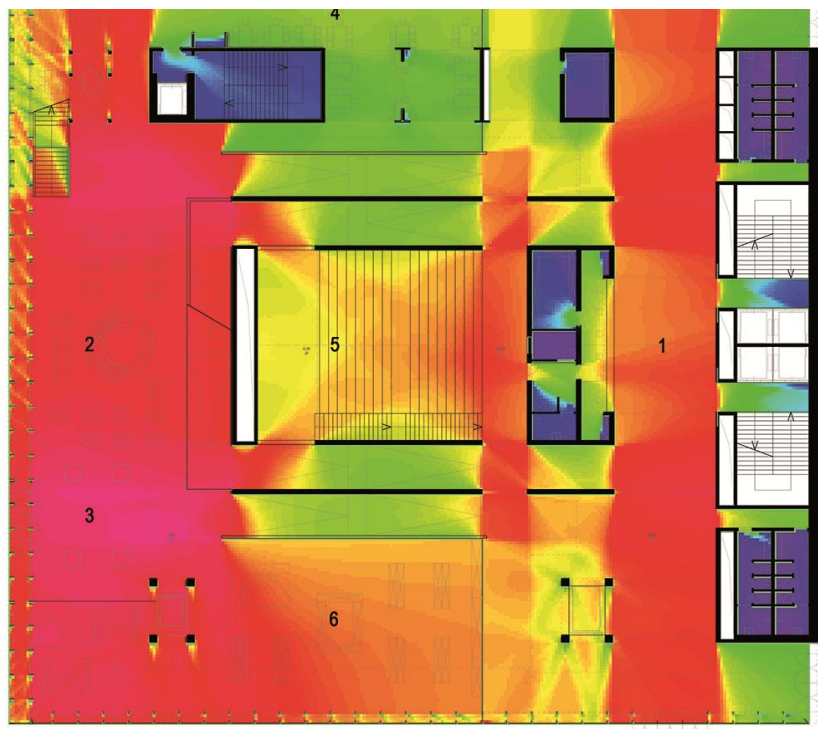
The building had to house a high amount of functions and areas dedicated to many subjects, very different one to each other. According to the competition guidelines the macro-functions required were the following: a big auditorium to host the celebrations and the Nobel Prizes Award Ceremonies, a museum, to host both temporary and permanent exhibition areas, a library, public restaurants and refreshment stands, office areas and

finally laboratories and educational spaces to be dedicated to young students. The amount of all these spaces should not exceed twelve thousand square meters.

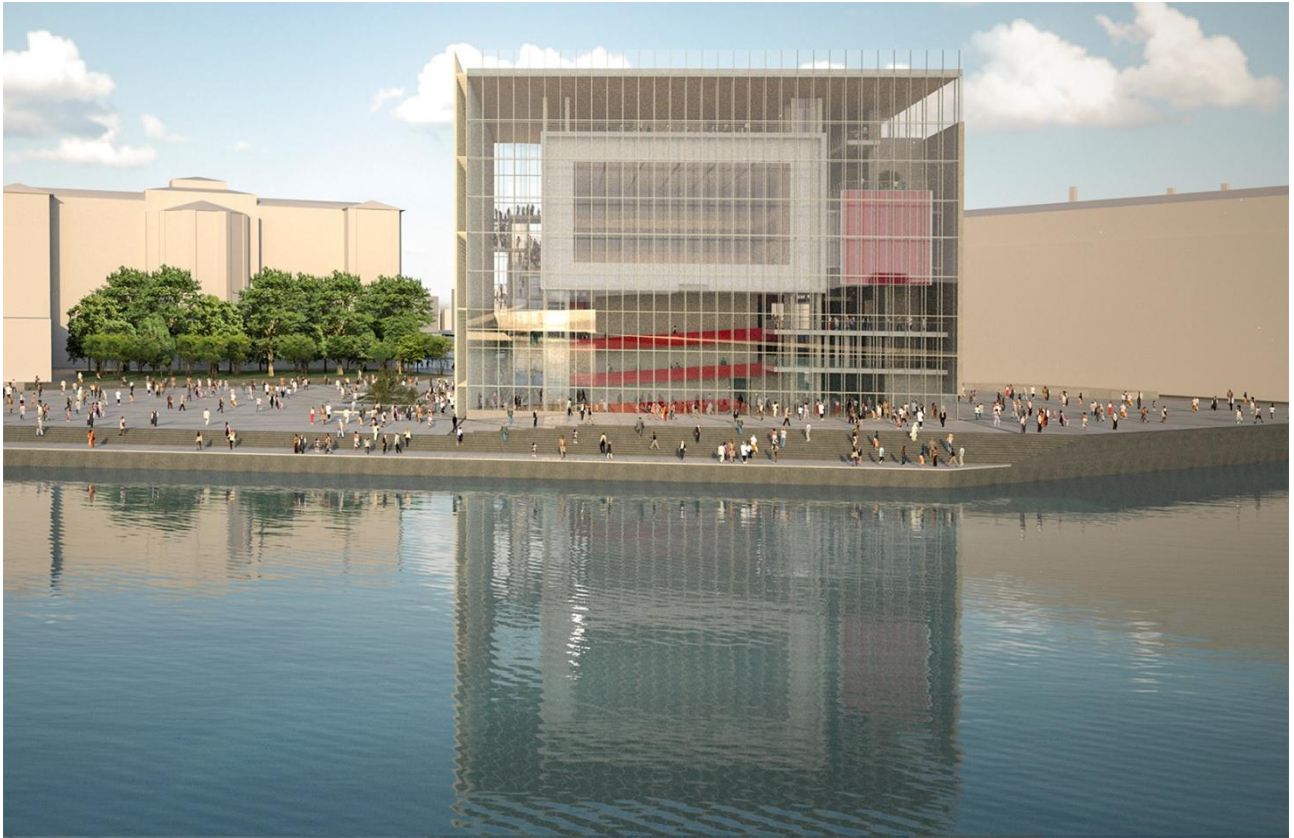
The subject complexity has been investigated at different levels. A first step has seen the creation of conceptual maps and functional diagrams relative to the functionality of the Centre, in terms of connections and relations between the spaces. In a second phase of the study the themes of functional features of the building and of its insertion at a urban level were examined in depth. In this step great importance was given to the analysis of real models and 3D models, useful for the comprehension of the volumetric implications of the first formal proposals of the building. Simultaneously to the development of the project in a formal and distributive key, urban plan analyses were carried out in order to understand not only the impact of the building on the city, but also to better define the details of its insertion inside the city parcel.

Furthermore the use of Space Syntax analyses allowed me to study the distribution of the building itself at different levels. Through spatial analyses, visibility maps relative to the designed space were realized in order to define the optimal relations between the spaces in terms of privacy and of course visibility.

Visibility analysis with software Space Syntax



In conclusion, I can assert that the most valuable element of my Master Thesis has been that of trying to develop and relate in a coherent way the design process of the building with a spatial study on its impact at an urban scale in the city context.



For more information contact:
Enrico Nicli, nicli-enrico@hotmail.it