



**Politecnico
di Torino**

Honors Thesis

Master's degree Architecture for Heritage

Abstract

From hidden clues to hidden realities. A study of the metochion of Koumares

Tutor/Correlator

**Cesare Tocci
Nikolaos Skoutelis**

Candidate

**Emma Colella
Marta Maria Toniolo**

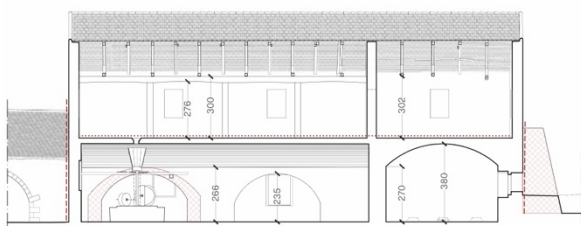
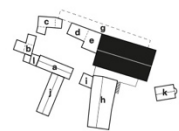
July 2025

Nestled among olive groves and vineyards, at the foot of the mountains of the Akrotiri peninsula in north-western Crete, lies the rural settlement of Koumares (Κουμαρές), one of the estates (metóchia) belonging to the Orthodox monastery of Gouverneto, located on the hill behind it. The settlement, dating back to the 17th century, has been formed over time through successive stratifications and today consists of a group of twelve buildings, mainly small dwellings, arranged around a central courtyard. Among these, a large two-storey building stands out, the oil mill, the productive hub of the complex. The red colour of the fertile clay soil in the area defines the material appearance of the architecture, giving it a strong identity. While the land continues to be cultivated and the olives are harvested annually, no one lives in the houses anymore. The absence of inhabitants, understood both as the creators of architectural transformation and as the guardians of the buildings, has disrupted the delicate balance between use, care and transformation that has shaped this material over the centuries; prolonged abandonment now risks compromising a desirable process of recovery.

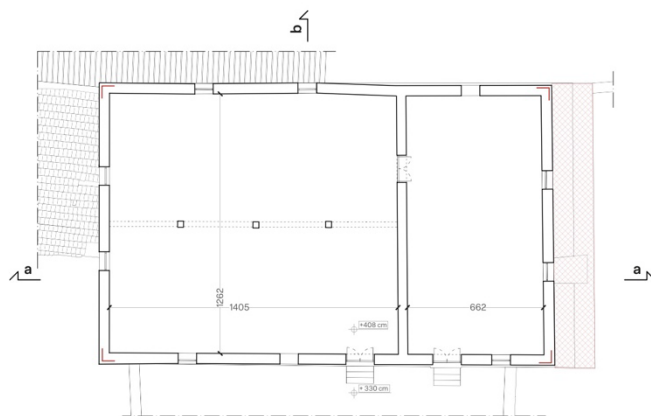
The thesis work is structured as a journey that starts from the historical and territorial contextualisation of the settlement and leads to the definition of a design direction that moves from the intervention on the roof of the oil mill. The approach adopted is based on the idea that every design operation must stem from a deep understanding of what already exists and its transformations. The phases of knowledge and interpretation, which form the core of the thesis, draw on the work carried out on site and the experience accumulated during the months spent on the island.



Koumares settlement. General plan and sections






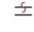




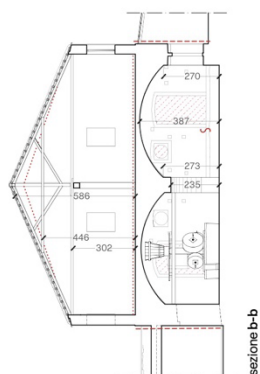
sezione a-a



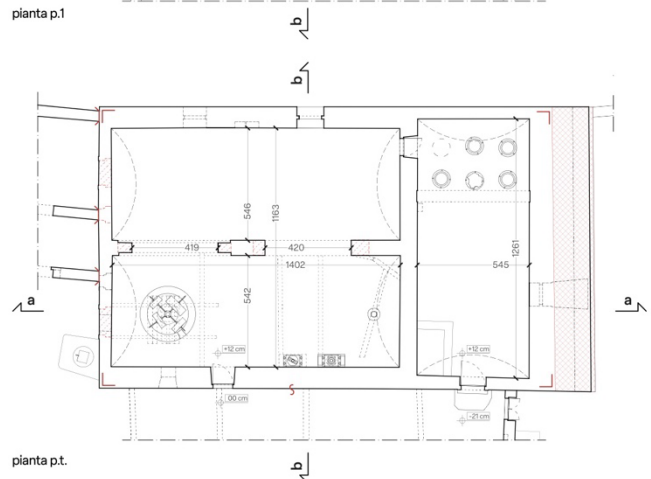
pianta p.1

Legenda

-  Spigolo, angolata o spalla
-  Accostamento successivo a superficie finita in pianta
-  Accostamento successivo a superficie finita in sezione
-  Linea di sopraelevazione
-  Presenza di materiali costruttivi diversi appartenenti a differenti fasi costruttive
-  Scarpe murarie, contrafforti, archi di rinforzo
-  Tamponamenti in sezione e in prospettiva
-  Tamponamenti



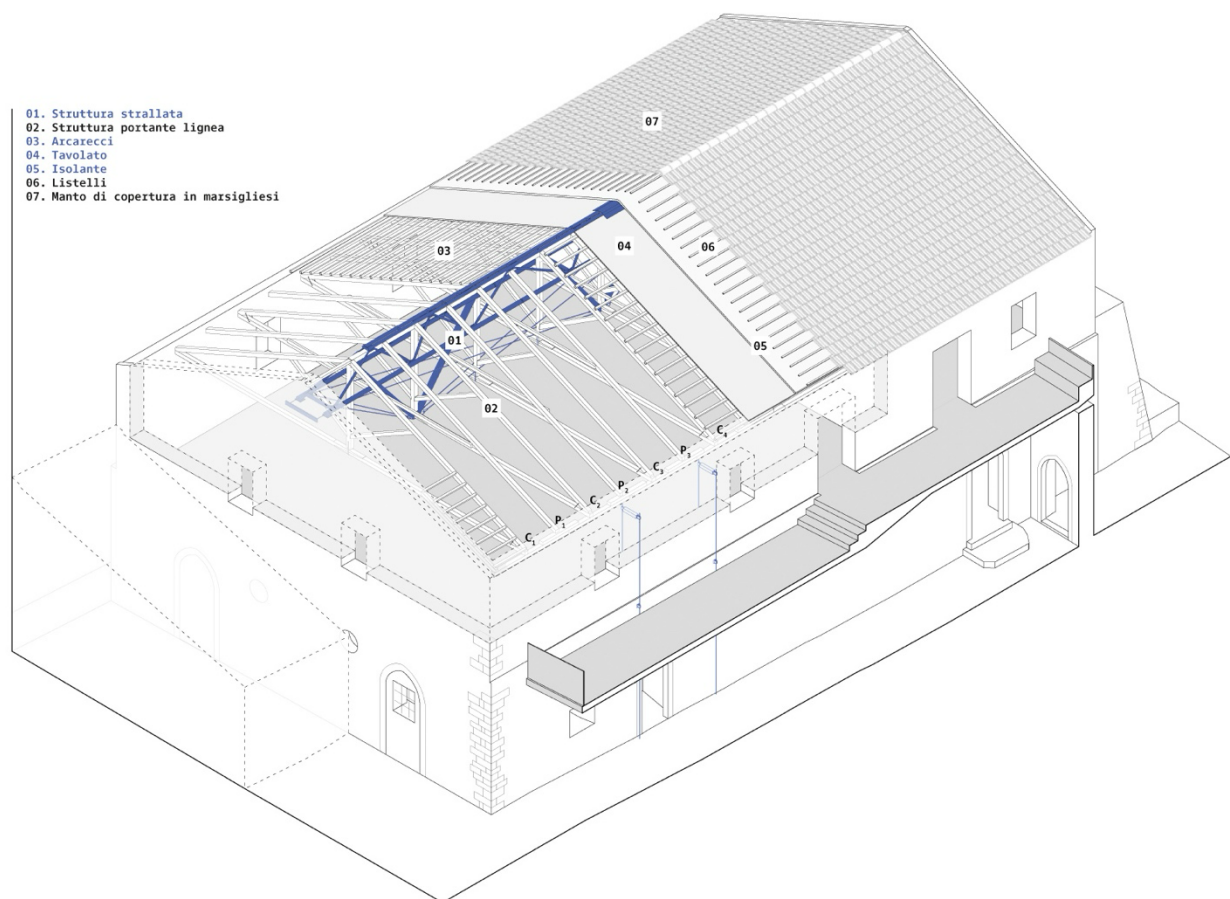
sezione b-b



pianta p.t.



Oil Mill. Interpretative analysis



Consolidation project on the roof of the oil mill

For info:

emmacole987@gmail.com

martamariatoniolo@gmail.com