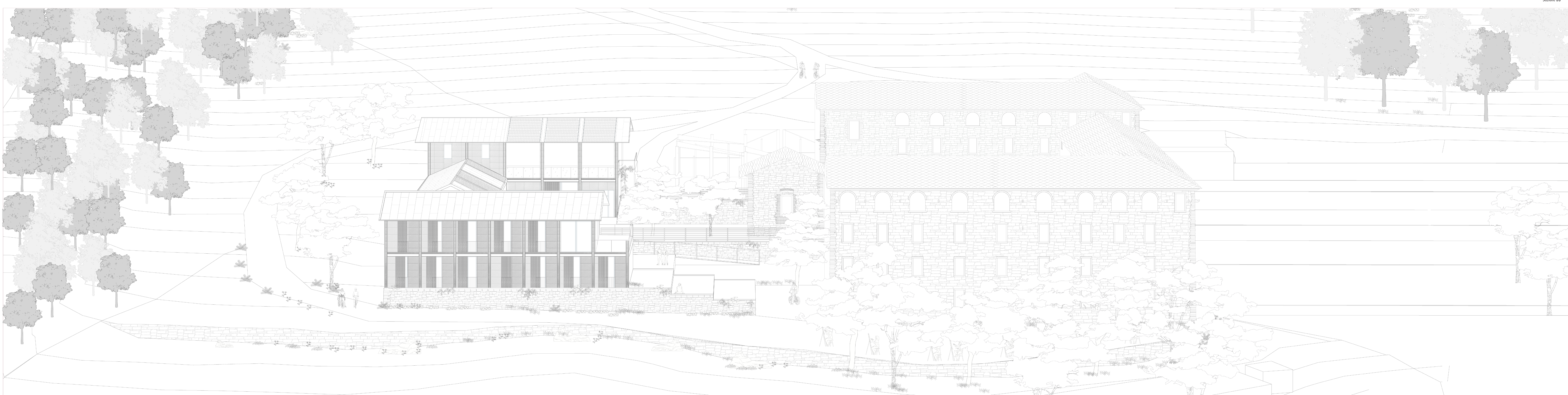
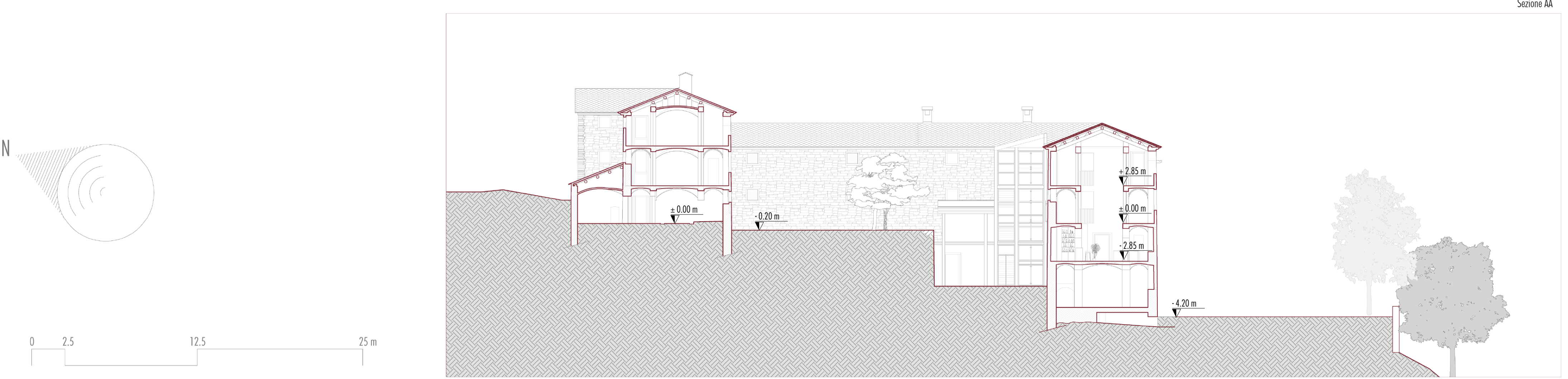
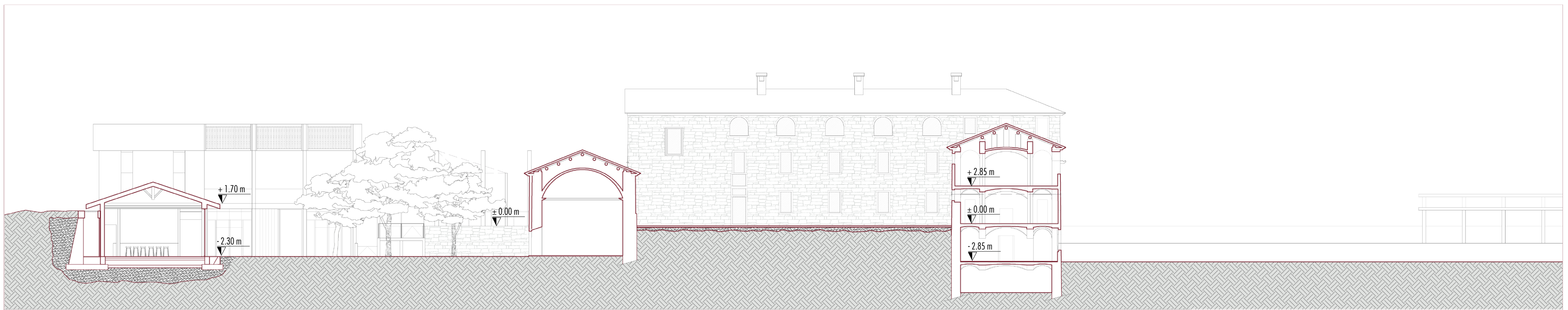
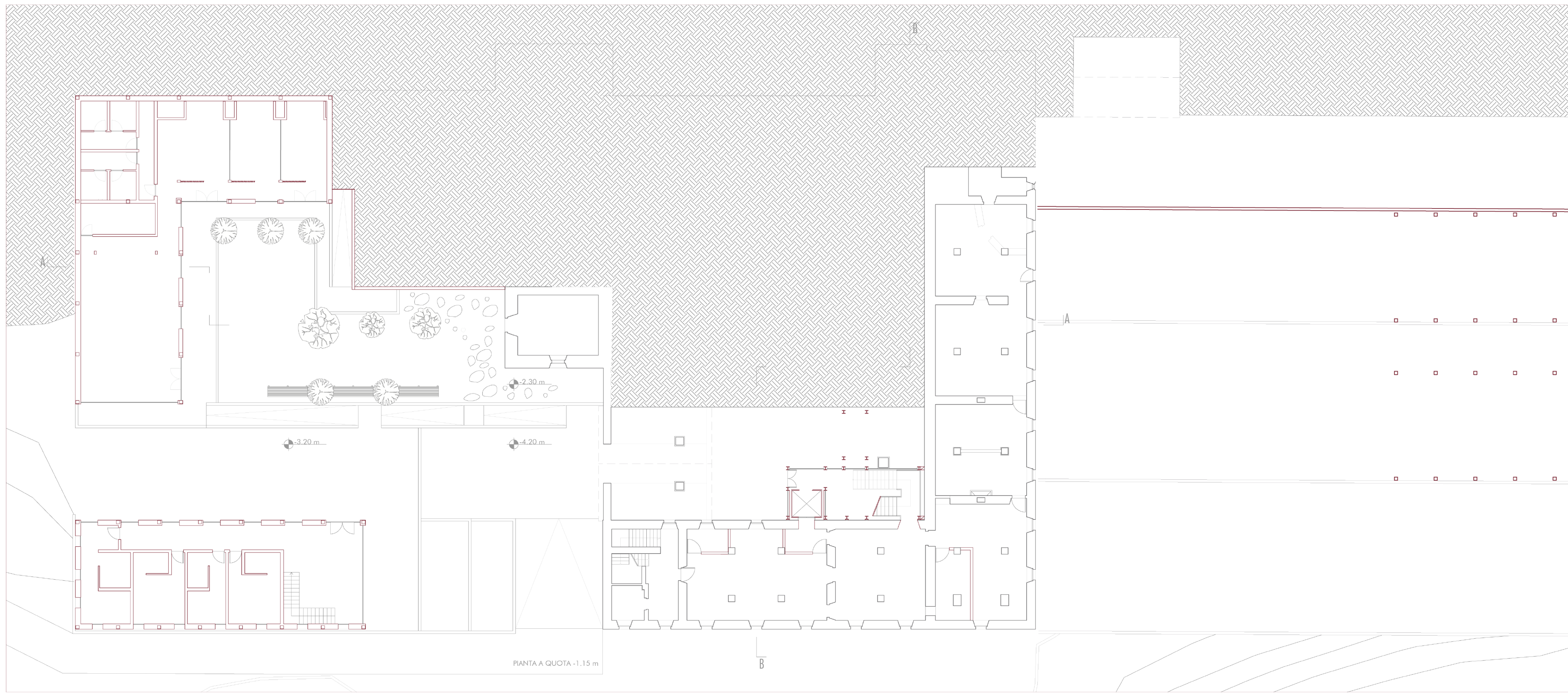
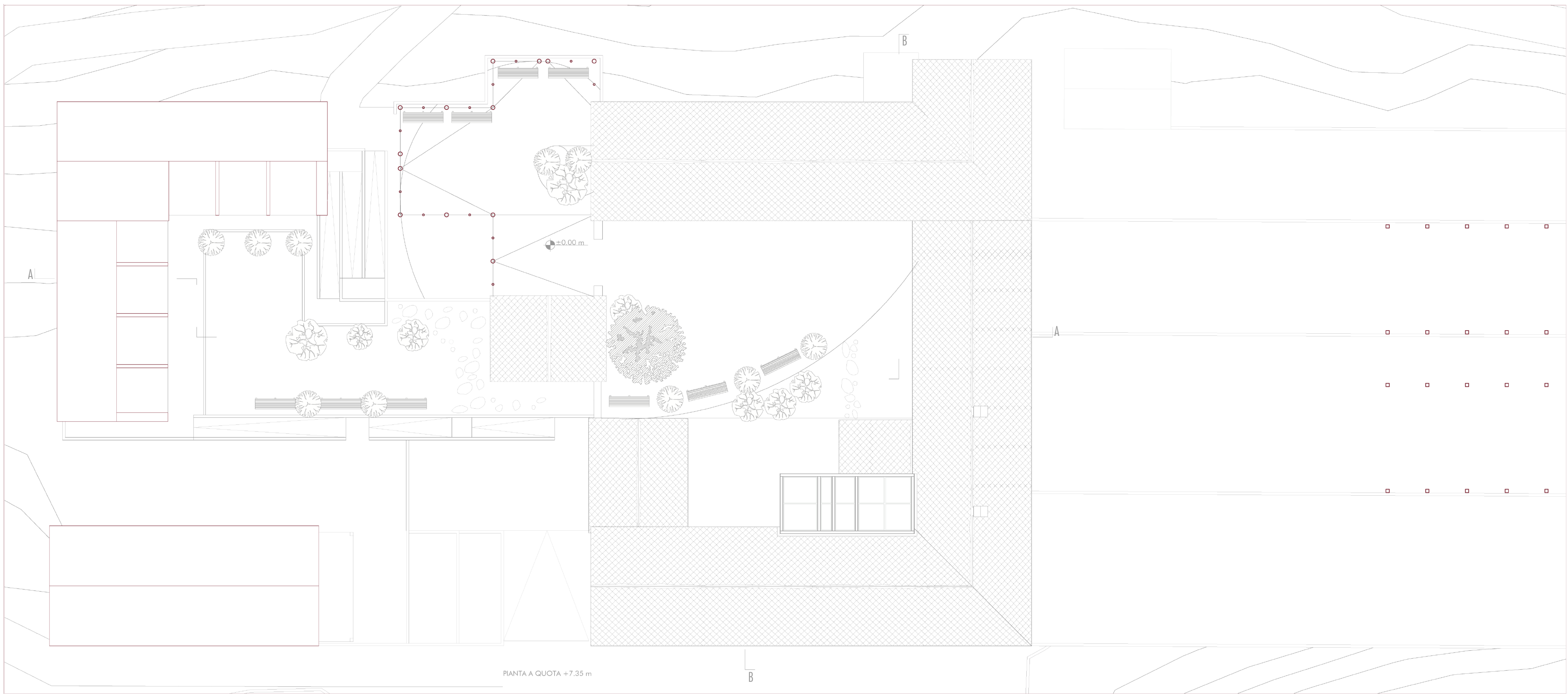
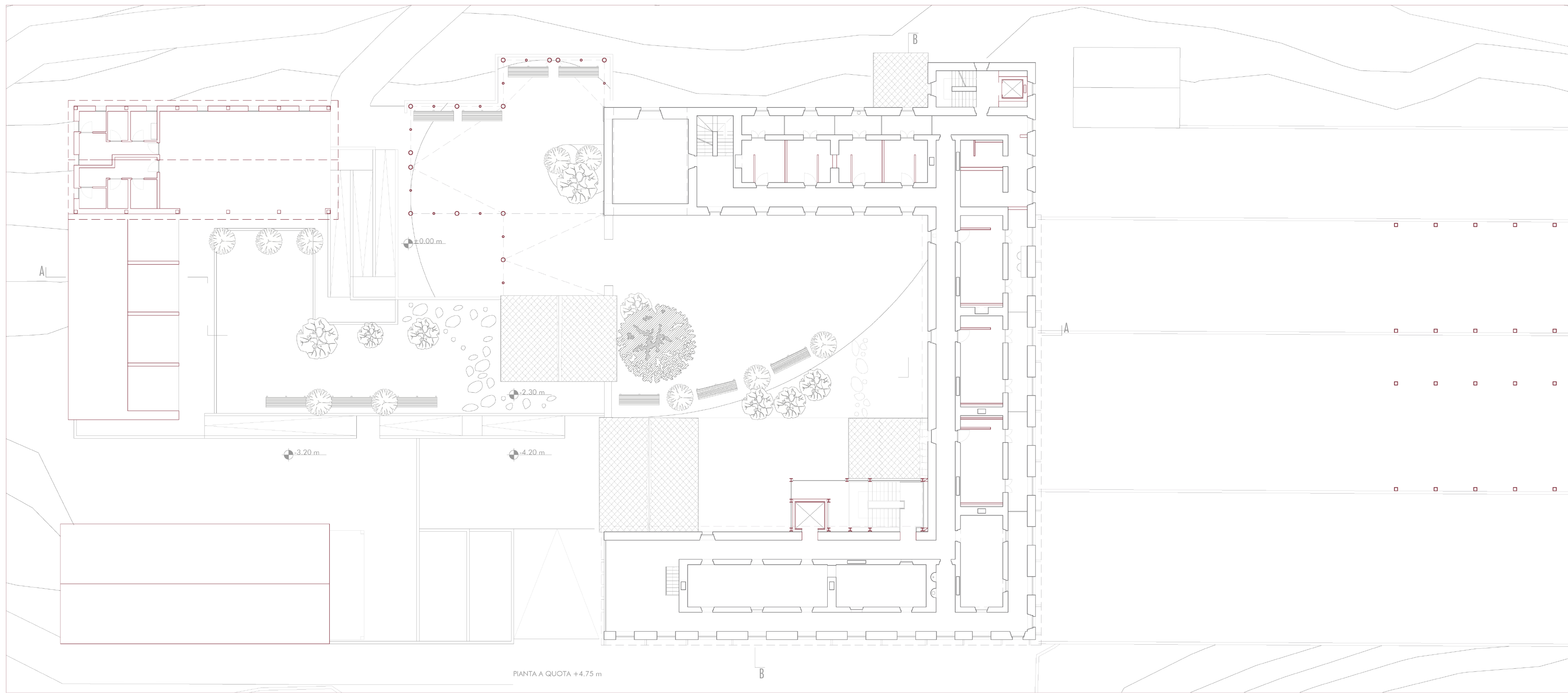
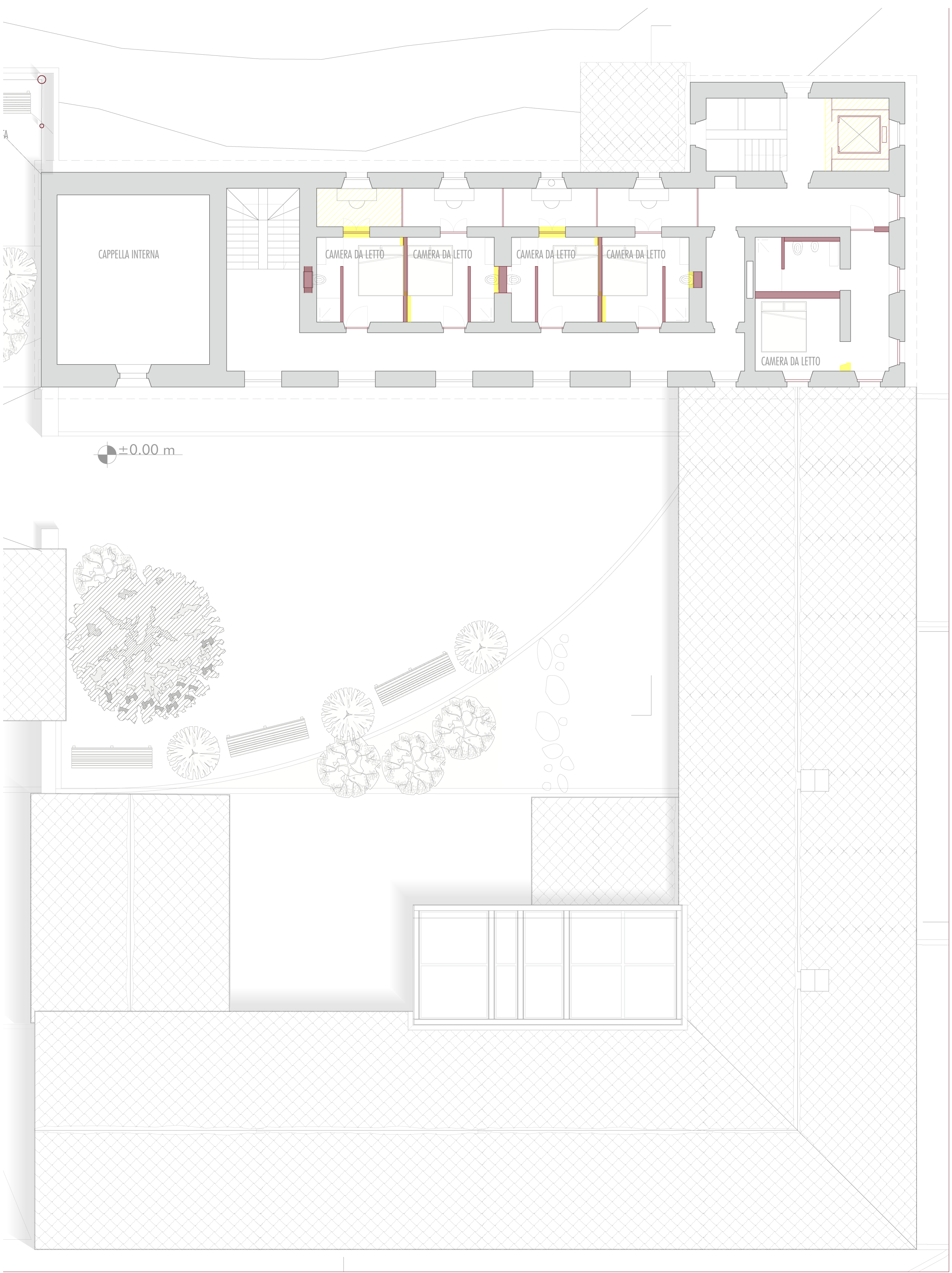


The image is a monochromatic architectural rendering of a mountain landscape. In the foreground, a large, multi-story stone building with a tiled roof and numerous arched windows is depicted. A row of stylized, light-colored trees stands in front of the building. The middle ground features a sloping hillside with a dense forest of trees. In the background, a large, craggy mountain peak rises against a dark sky with a few wispy clouds. A red circle and a white crosshair are overlaid on the right side of the image, highlighting a specific area within the forest. The text is centered in the middle of the image.

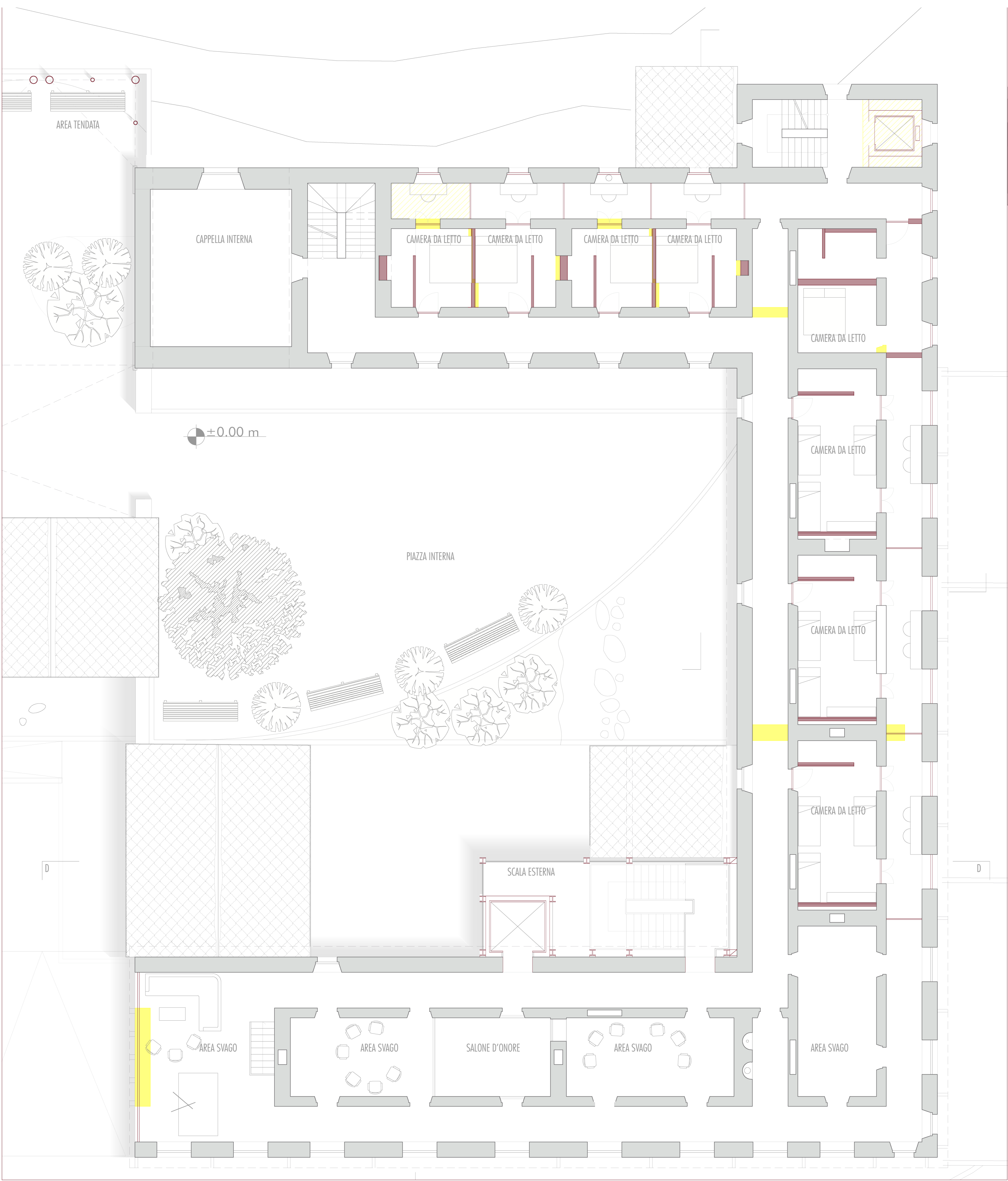
Progetto di Riqualificazione dell'Area Alpina della Trappa

Un Edificio dai Mille Volti

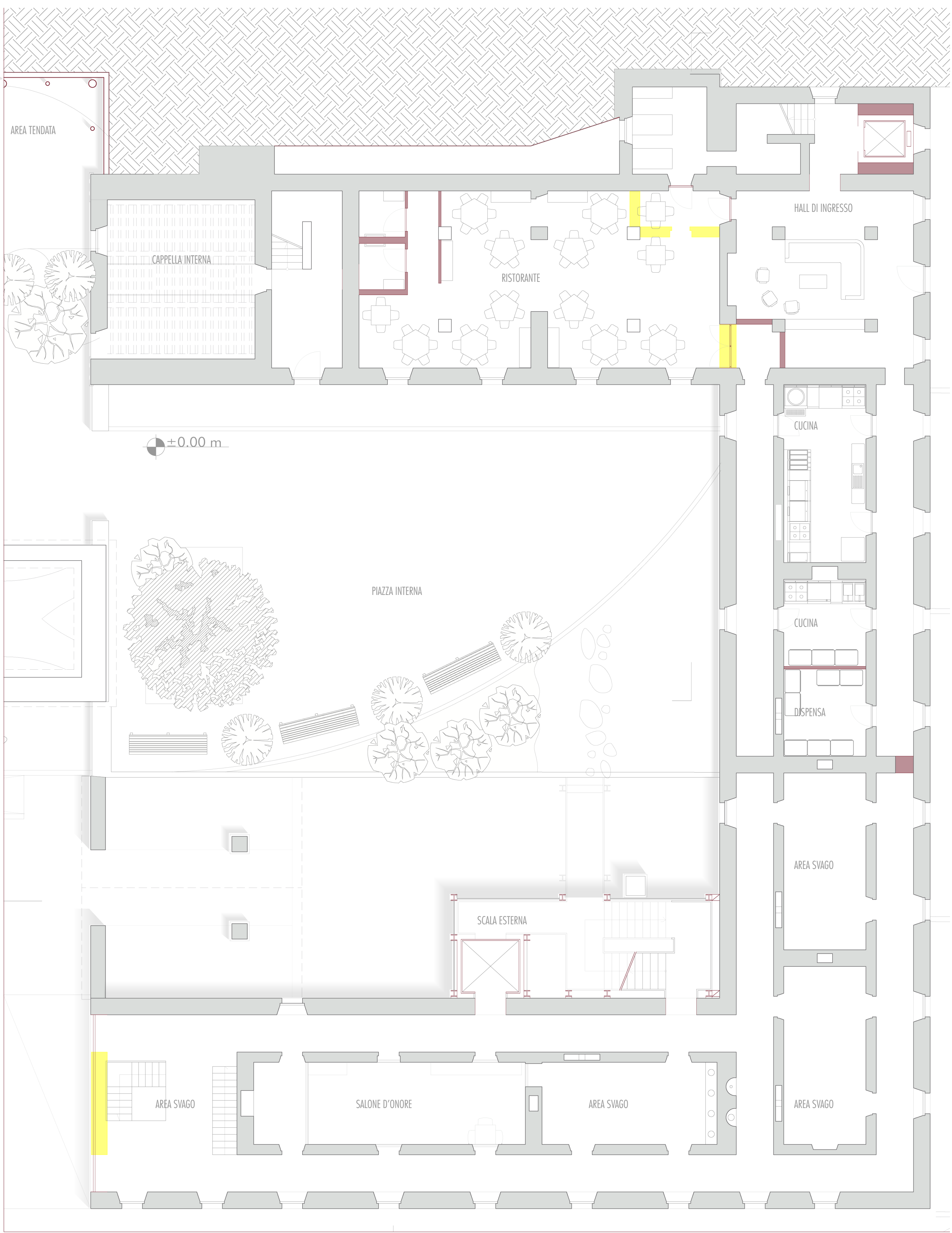
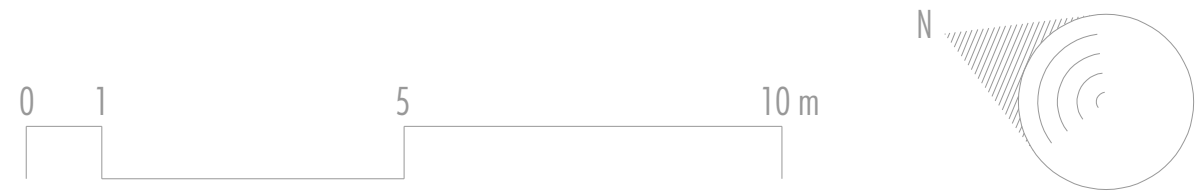




PLANIMETRIA PIANO SECONDO QUOTA + 7.35 m



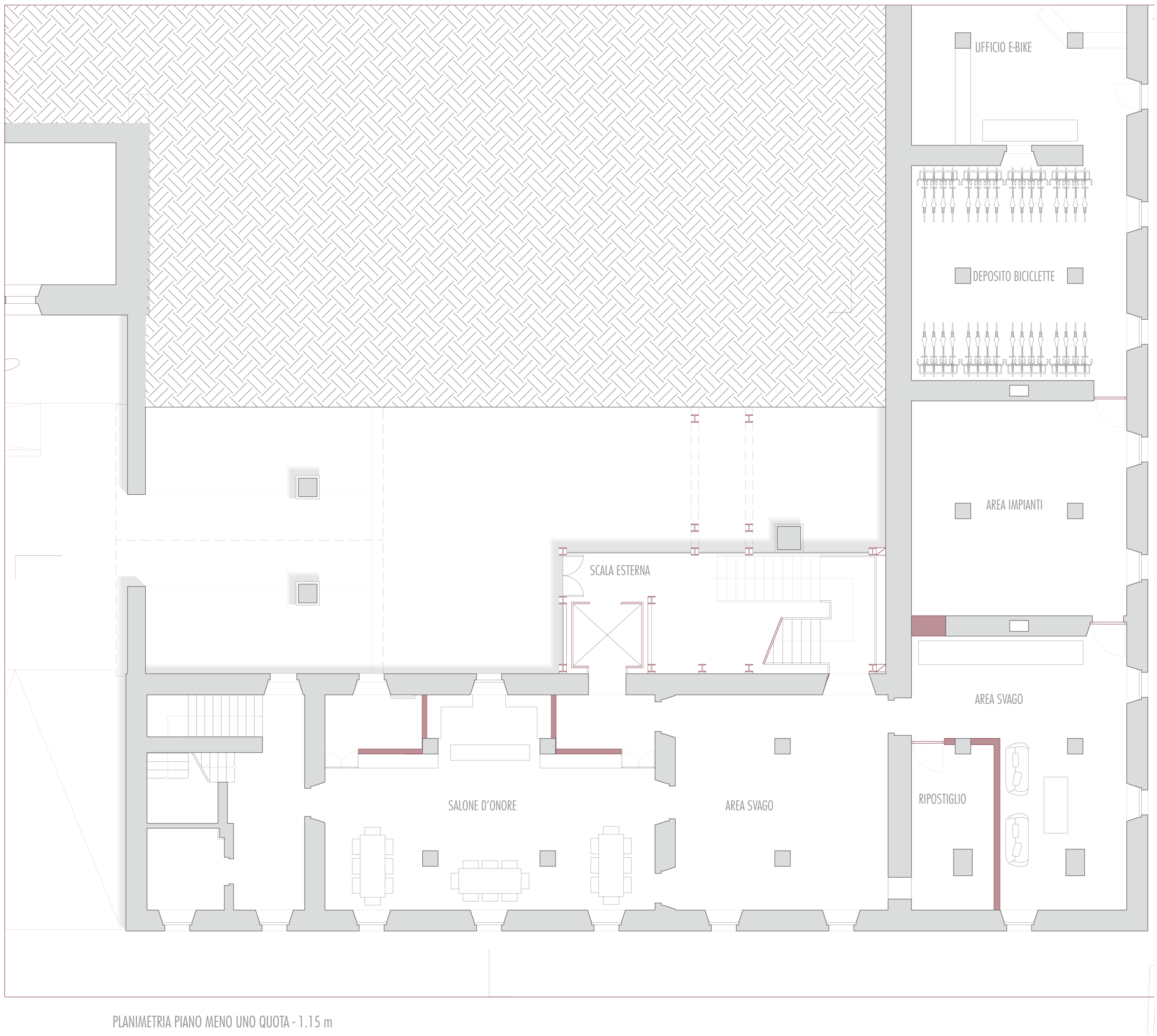
PLANIMETRIA PIANO PRIMO QUOTA + 4.75 m



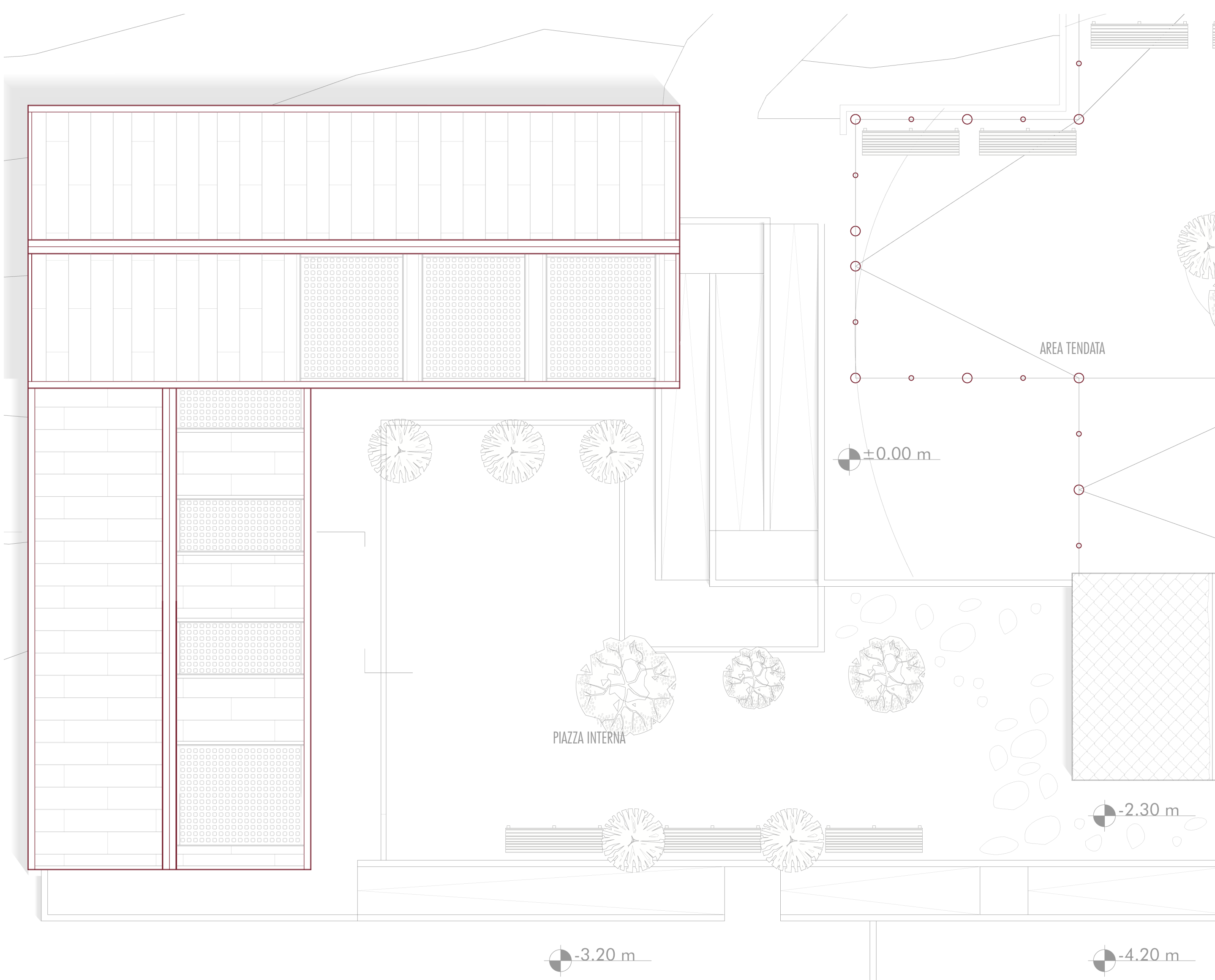
PLANIMETRIA PIANO TERRA QUOTA + 1.75 m



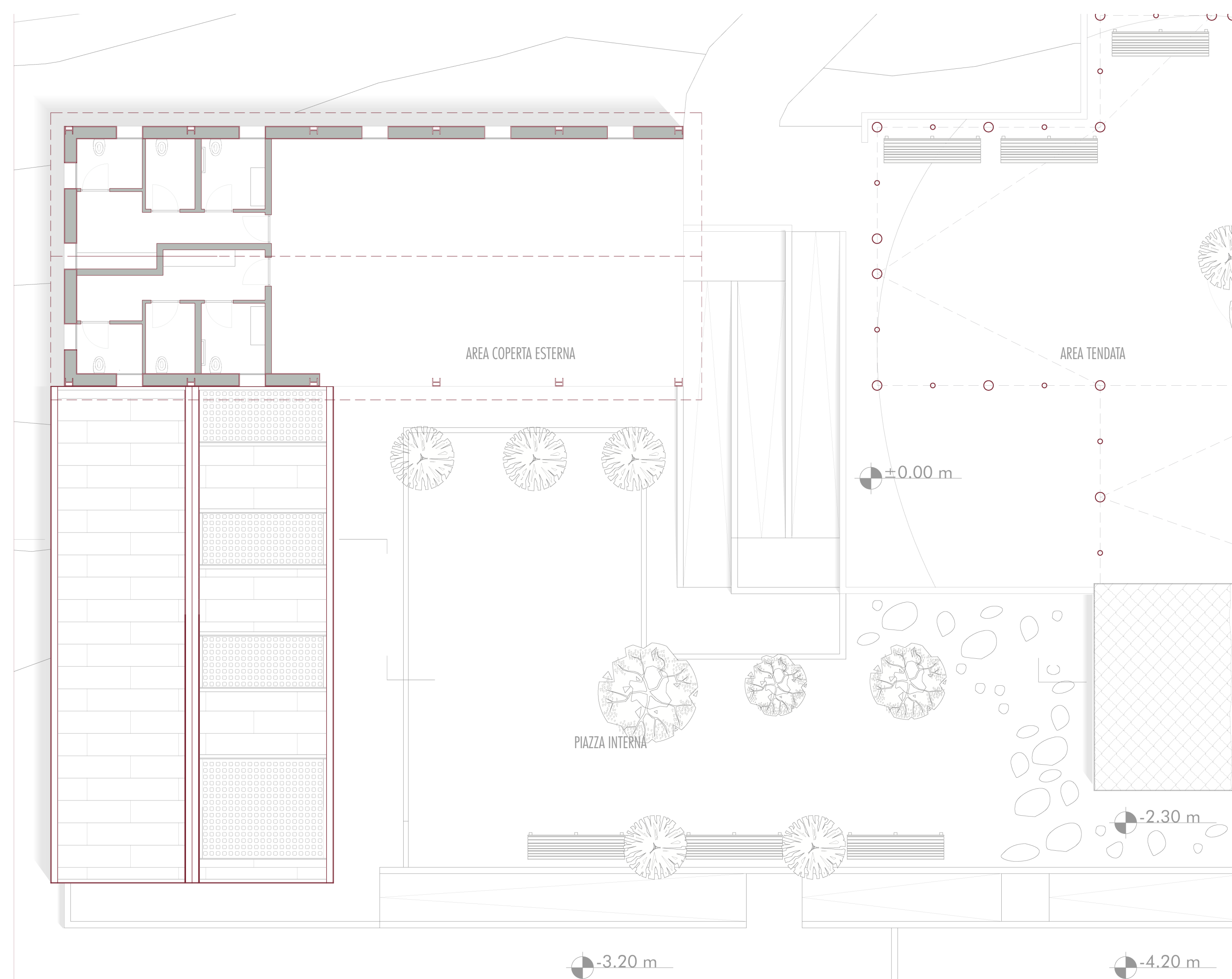
Sezione DD



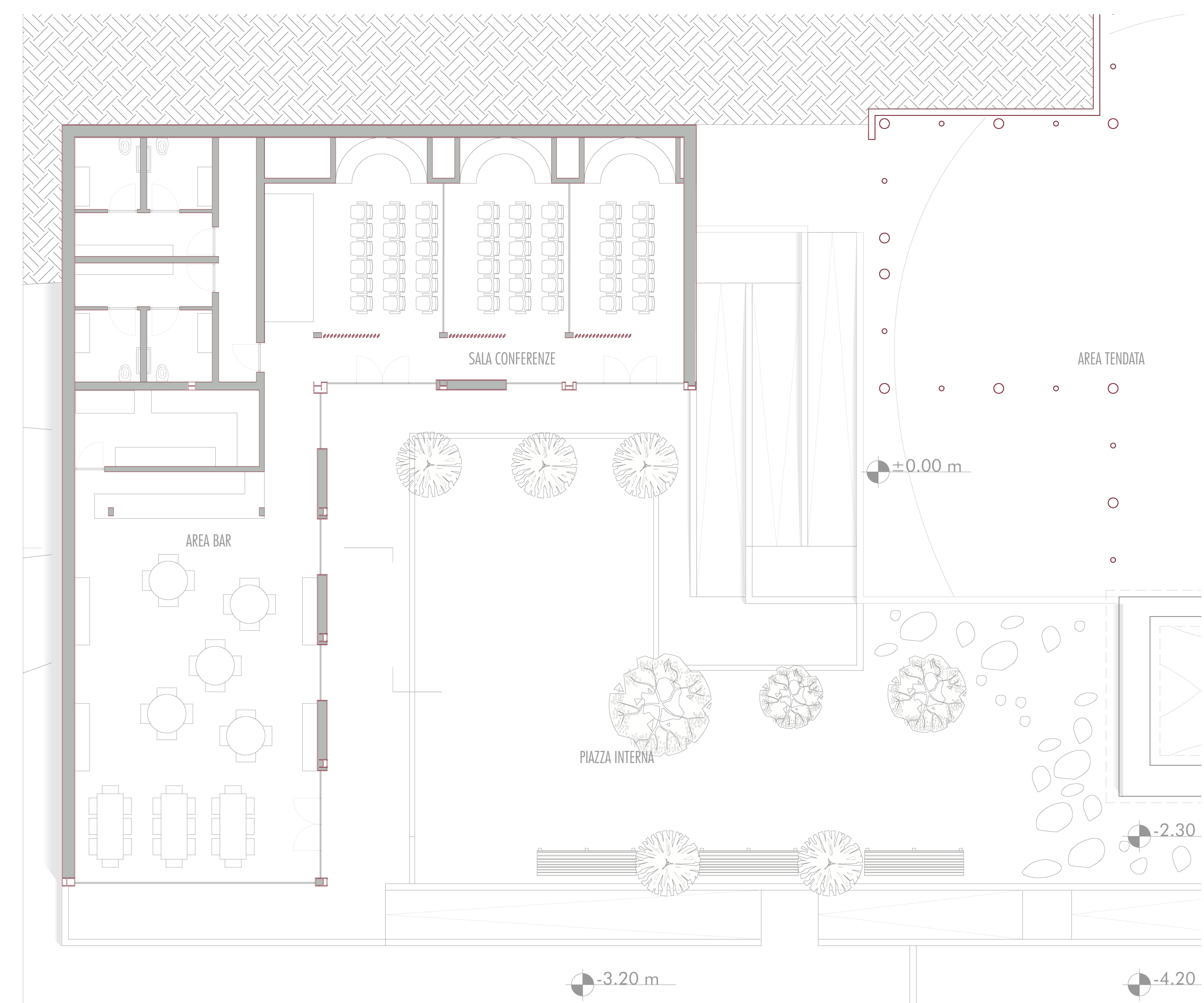
PLANIMETRIA PIANO MENO UNO QUOTA - 1.15 m



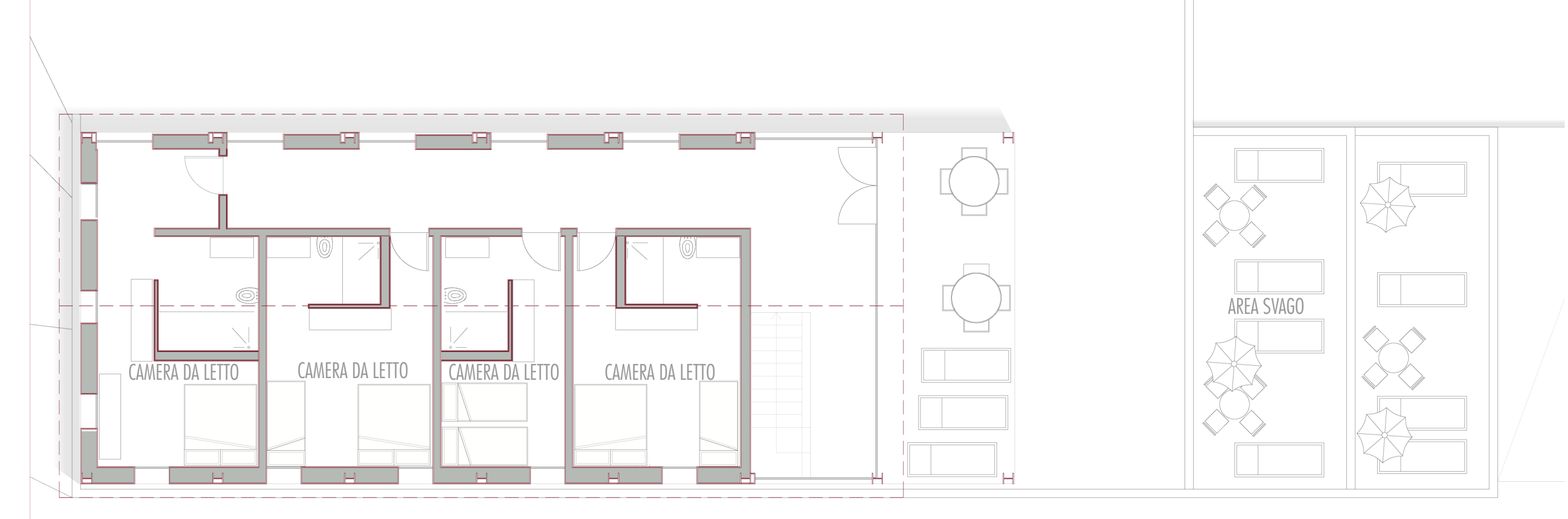
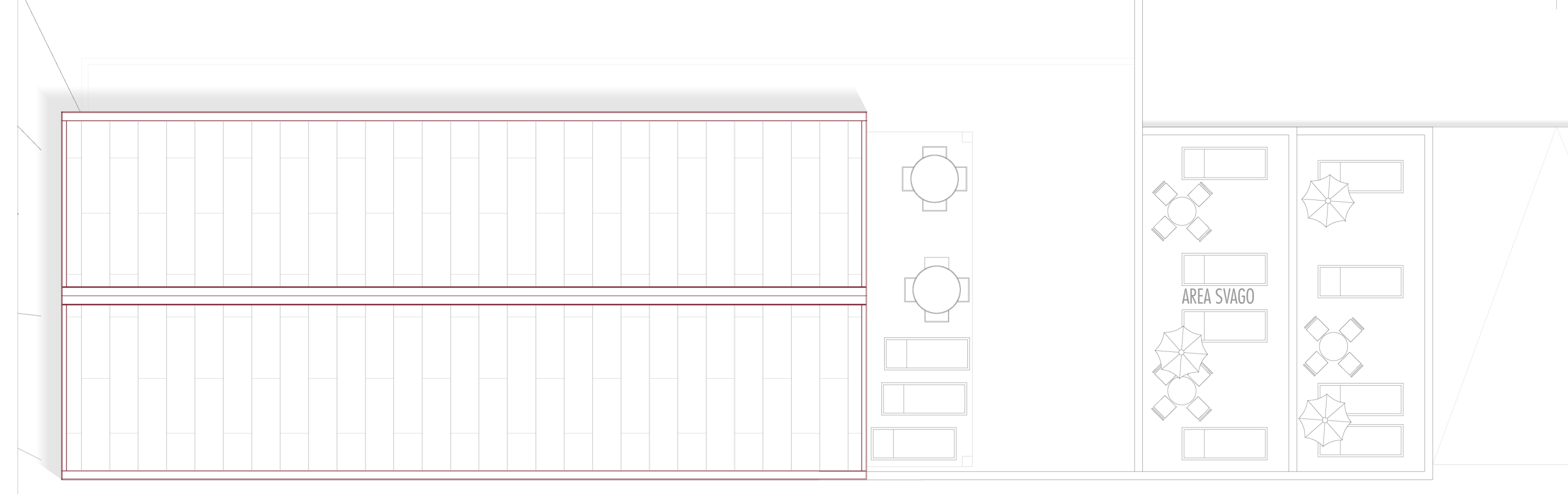
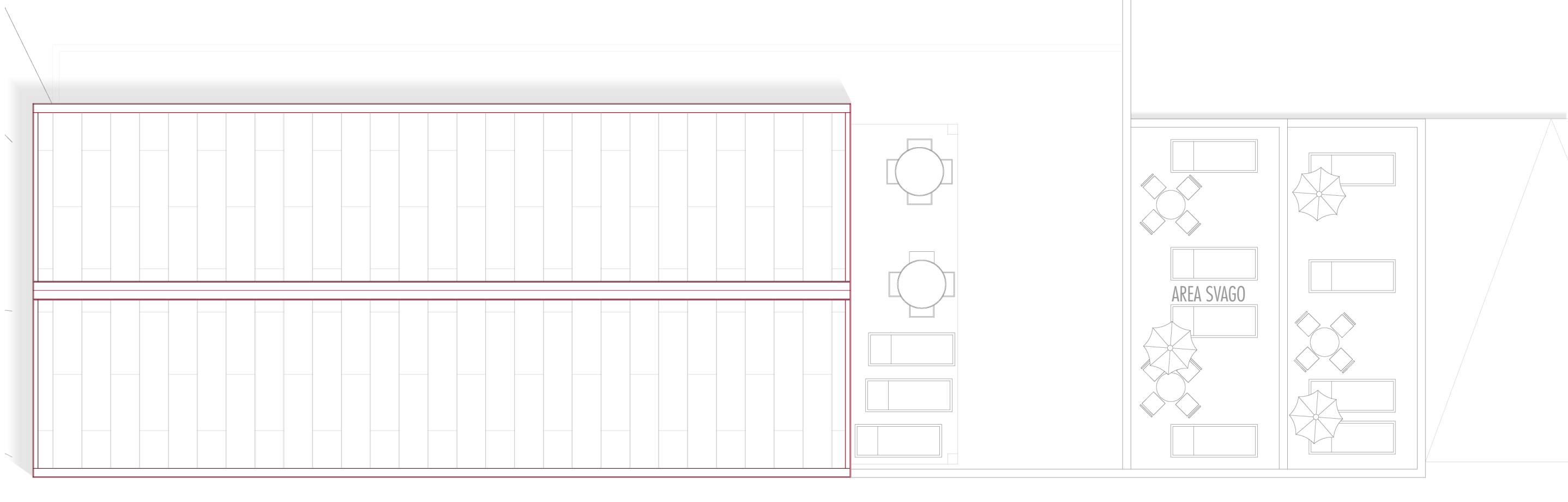
PLANIMETRIA PIANO SECONDO QUOTA + 7.35 m



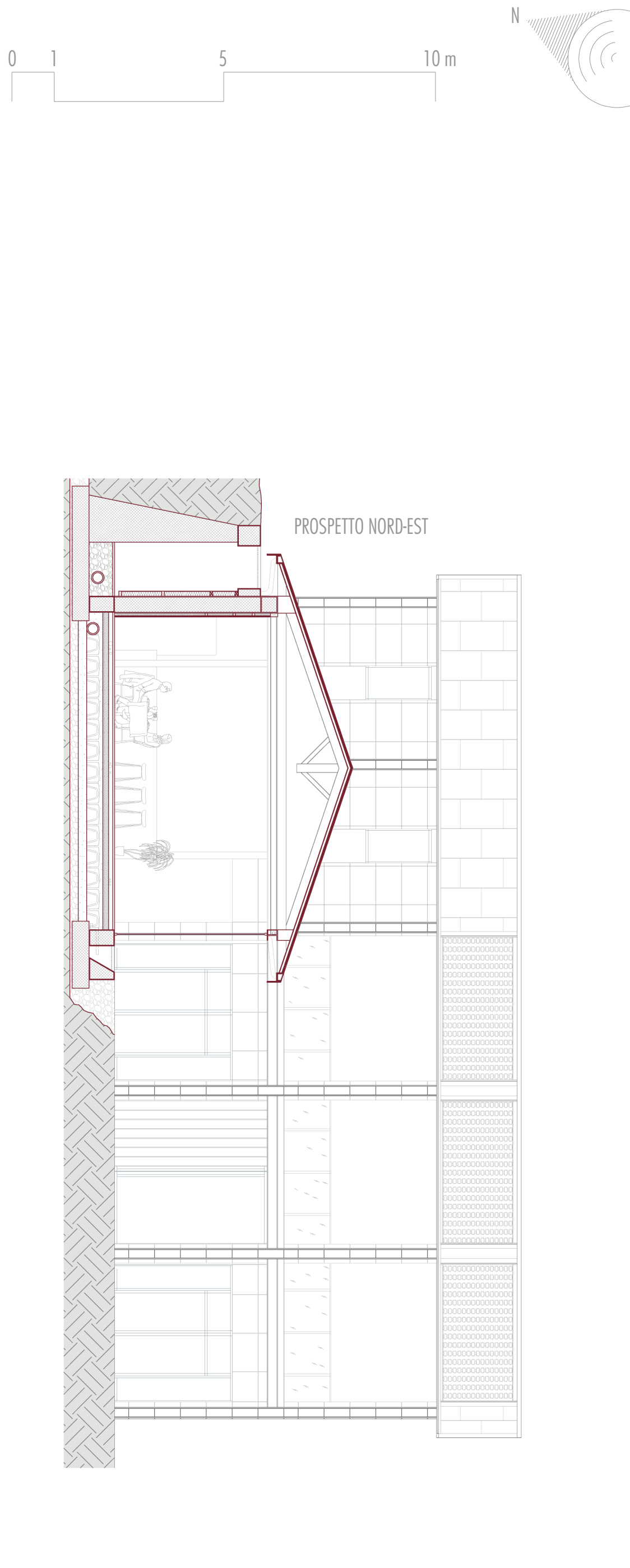
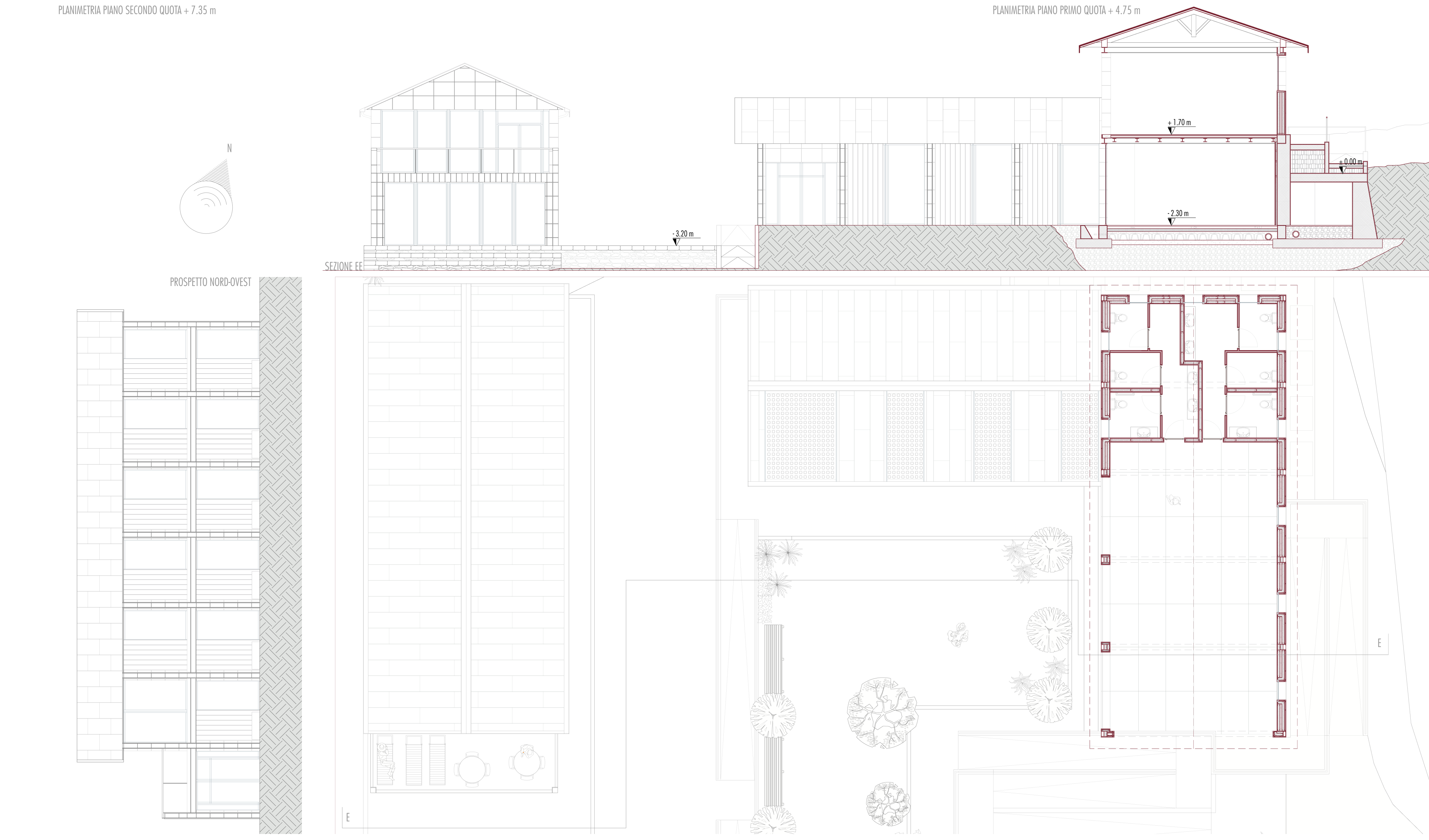
PLANIMETRIA PIANO PRIMO QUOTA + 4.75 m

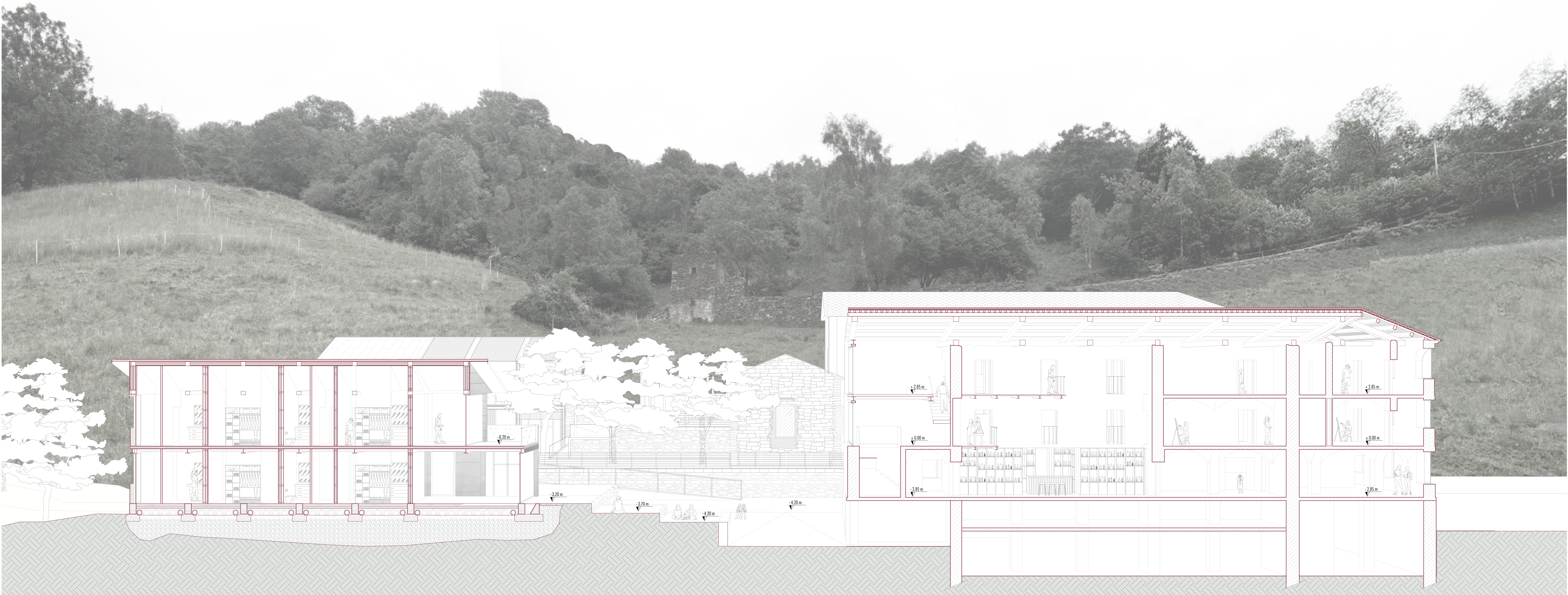


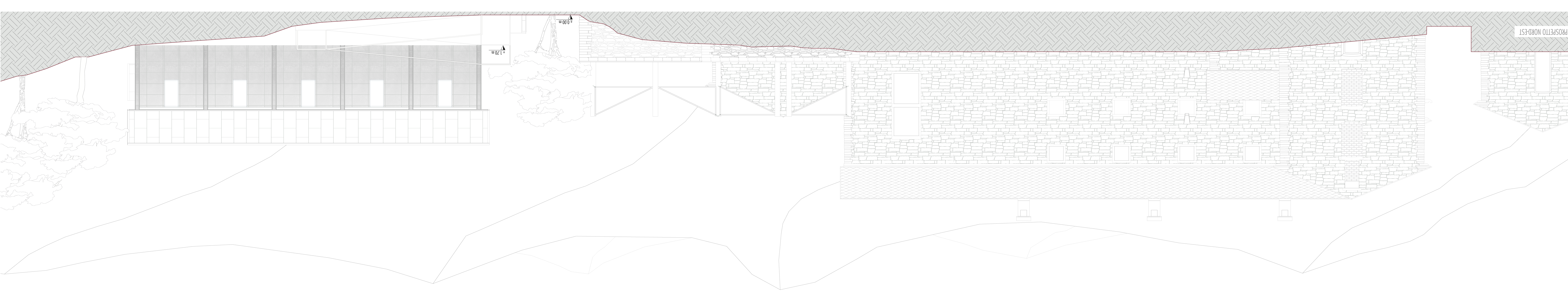
PLANIMETRIA PIANO TERRA QUOTA + 1.75 m



PLANIMETRIA PIANO MENO UNO QUOTA - 1.15 m







PROSPETTO NORD-EST

