

POLITECNICO DI TORINO
SECOND SCHOOL OF ARCHITECTURE
Master of Science in Architecture
Honors theses

Informal architecture: issues, contamination and radical impact on contemporary design

by Andrea Terreno

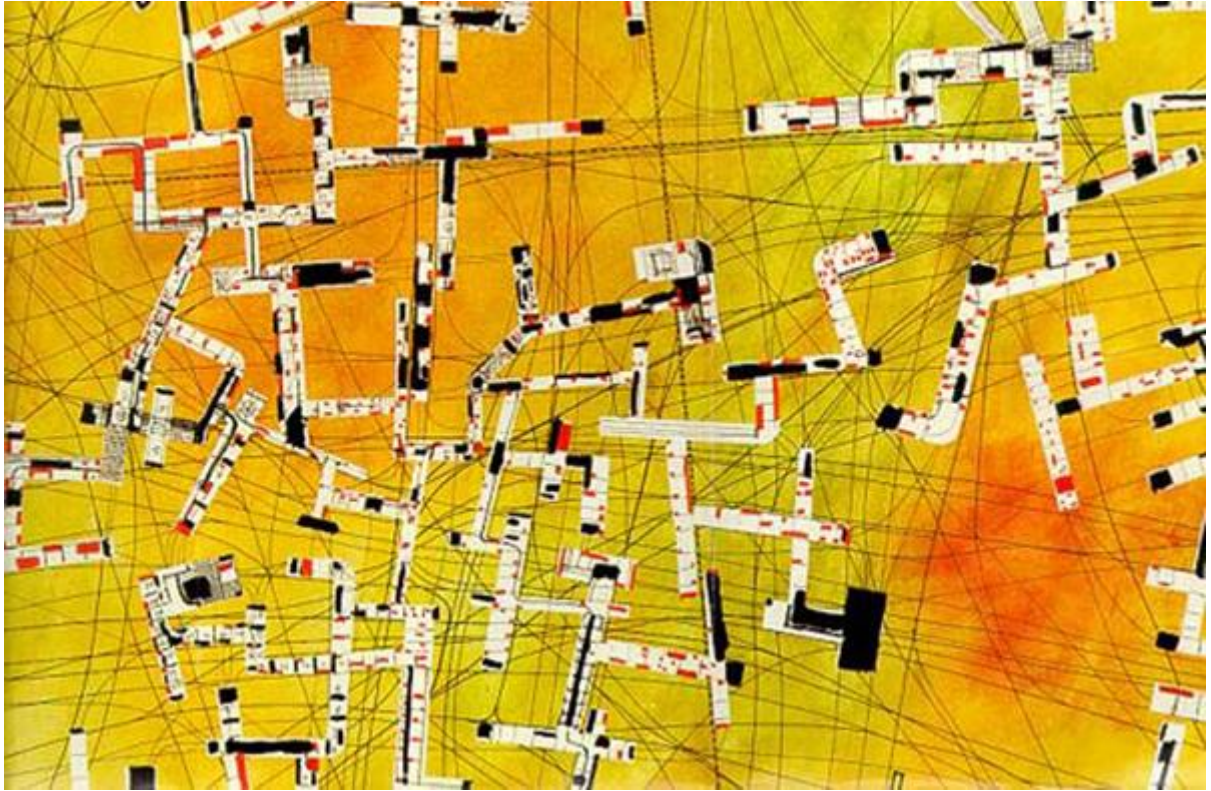
Tutor: Rosa Rita Maria Tamborrino

Co-tutor: Andrea Delpiano

The Western world, from the early years of the twentieth century, during the events of the First and Second World War and during the decades until the seventies, has been affected by the emergence of a thriving artistic cultural and philosophical movements. Starting with Europe and then expand the scope of analysis to the United States and to Japan, the architectural debate has been characterized both by strong and contrasting colors and shades from light once. The new avant-garde and the modern movement have set new issues and old issues with a new approach in order to find answers for a society in rapid change: the city, the individual, the architecture, the anti-architecture, language, space etc ... and now that we live today is the temporary result of this process.

Within the architectural debate, over the decades, have distinguished thinkers and designers that can be inserted into a reality defined by the term "informal". Their theories, their contribution has been so significant that today we can identify the space designed and that in the future, an imprint that belongs to their matrix.

This thesis bases its origin in the event that we start today, analyzing the architecture designed and built in the last 10-15 years, we can recognize languages, features, expressions and concepts of architecture somewhat amorphous, not homogeneous and most of the times ideological, which we simplify calling informal.



Unitary Urbanism, New Babylon, Constant

We are aware of the vastness of the subject and the pluralism of voices in the twentieth century have contributed to the formation of the company and of contemporary architecture, this paper therefore is insufficient to allow a full and complete understanding of the various events and concepts that will meet long analysis, but aims to be a good tool for understanding how to interpret, methodologically, contemporary architecture in the light of historical events and personalities which they took part.

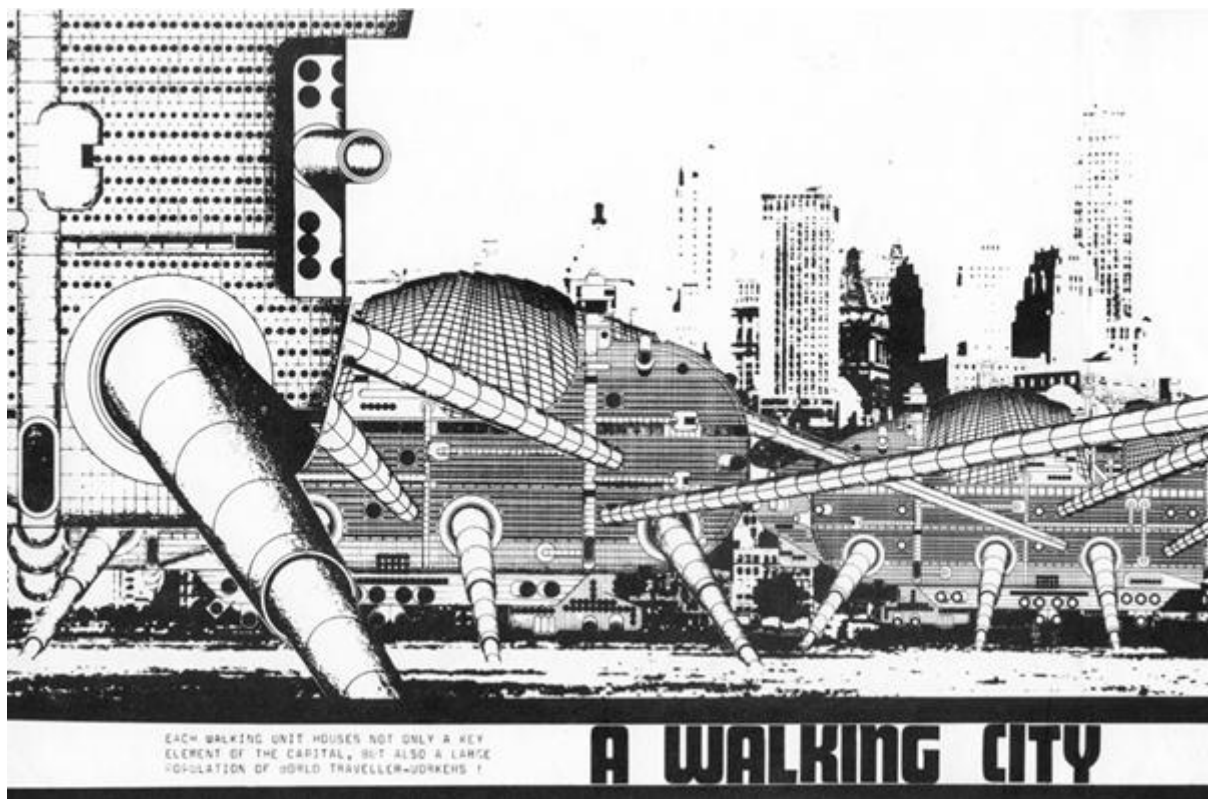
The development of the elaborate proceeds from a first analysis of the term "informal" and its first definition, useful to better understand the necessary deepening path in later chapters.

It then proceeds to an historical and artistic analysis of the context from which the informal inextricably linked. Indeed, precisely the historical events that took place between the beginning of the 900 until the seventies, are the first contribution to the process of birth of the movements of thought and their subsequent meeting and confrontation.

The analysis is then focused on news, breaking elements of the main art movements, the first catalysts of new ideas.

Then you go down more deeply into the theme by offering a description of the lines of thought and planning activities of the leading exponents of the informal movement.

After this first introductory part there is a second part where it collects the new terminology informal terms that express the concepts and the main themes that find expression in new architectural forms.

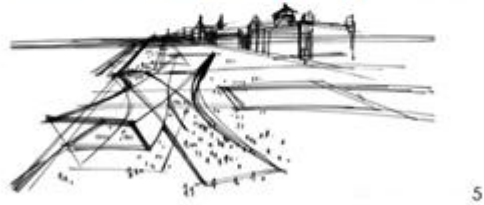


Walking City, Archigram 1968

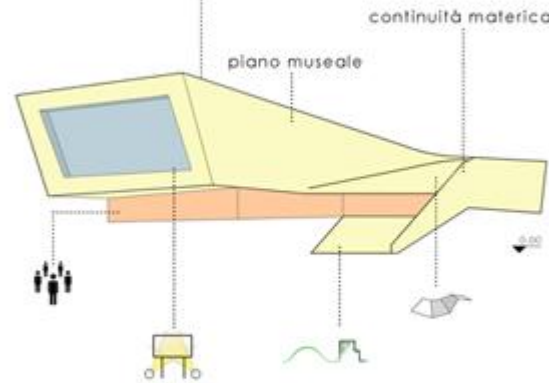
At this point you can explain clearly what are the open questions that the informal process has placed in the debate to analyze contemporary projects in the light of the informal themes, concepts, and languages . Through the third and final part of the critical design, it emphasizes what is the legacy that contemporary architects are gathering today and how much of that recovered was consistently assimilated or simply repeated.



FIG 1; Vista museo dalla banchina.
 FIG 2; Vista museo dal mare.
 FIG 3; Scala centrale.
 FIG 4; Schema delle direzioni principali d'attraversamento.
 FIG 5; Schizzo di progetto.



processo di scomposizione e composizione



Spazio condiviso		Individuo nella comunità. Spazio ludico comune.
Architettura spettacolo		Cultura della visuale. Gestì come scenario da godere.
Continuità territoriale		Superficie continua. Land Art.
Folding		Astrazione formale. Peter Eisenman.

Analysis schedule of Liverpool Museum

For further information, e-mail:
 Andrea Terreno: andrea.terreno.architect@gmail.com