

POLITECNICO DI TORINO
FIRST SCHOOL OF ARCHITECTURE
Master of Science in Architecture Construction City
Honors theses

The Forestal Alto: a case of informal urbanism e and community design in the city of Viña del Mar

by Eugenio Bosco

Tutor: Matteo Robiglio

Co-tutors: Mauricio Puentes, Rodrigo Saavedra

The topic

The thesis is about the topic of the *toma*, the illegal land occupation and the creation of *campamentos*. It investigates how the informal growth of the city, a world-relevant issue, could be handled and managed in a conscious way.

The study, aims to get an operative reinterpretation of the means and theory of common urbanism that could support an effective intervention plan, and this was achieved through analysis of the physical territory, as well as human and political aspects in an early steps of the intervention.

Perspective

The informal growth of the cities through dynamics of auto-construction of spontaneous quarters in order to fulfill the rights and needs for a house and access to basic services of the poor part of the population, is an issue all around the world. Despite of the problems that rise from this kind of development and my personal disapproval of similar processes, I believe that it is designer's duty to face them. The rejection of the phenomena itself is a void and a superficial position that refuses to deal with the political and social dynamics that allow or encourage it. It's worthy to mention that unfortunately, most of the times the architect has no influence on the phenomena and will face it only afterwards, trying to fix things up through refurbishment.

Hence, it is essential that an architect gets involved in this kind of territories, built by the basic necessities of dwelling and working, in order to generate an urban space that would be appropriate for human life and even a chance of enrichment of the urban environment.

Hence, the presence of the architect in these territories, built by the basic needs of dwelling and working, is essential in order to generate an urban space that would be appropriate for human life and even a chance of enrichment of urban environment.



The design has been carried out through participation, involving the most vulnerable components of society, women and children

Study case

The study case is set in the Valparaiso region (Chile), an area traditionally characterized by this kind of urban development, precisely in the Forestal, sector of Viña del Mar; while writing this thesis, it was the biggest informal settlement in the whole country and was still in an expanding stage .

Because of its recent formation and huge dimensions, the life conditions in the *campamento* were critical, but on the other side for the same reasons the design and social task was easier.

The project has been developed with the School of Architecture and Design of Valparaiso, with the local *comites* and with the NGO CENPROD.

The project

The project moves from the territorial urban scale to reach through multiples steps the architectural design.

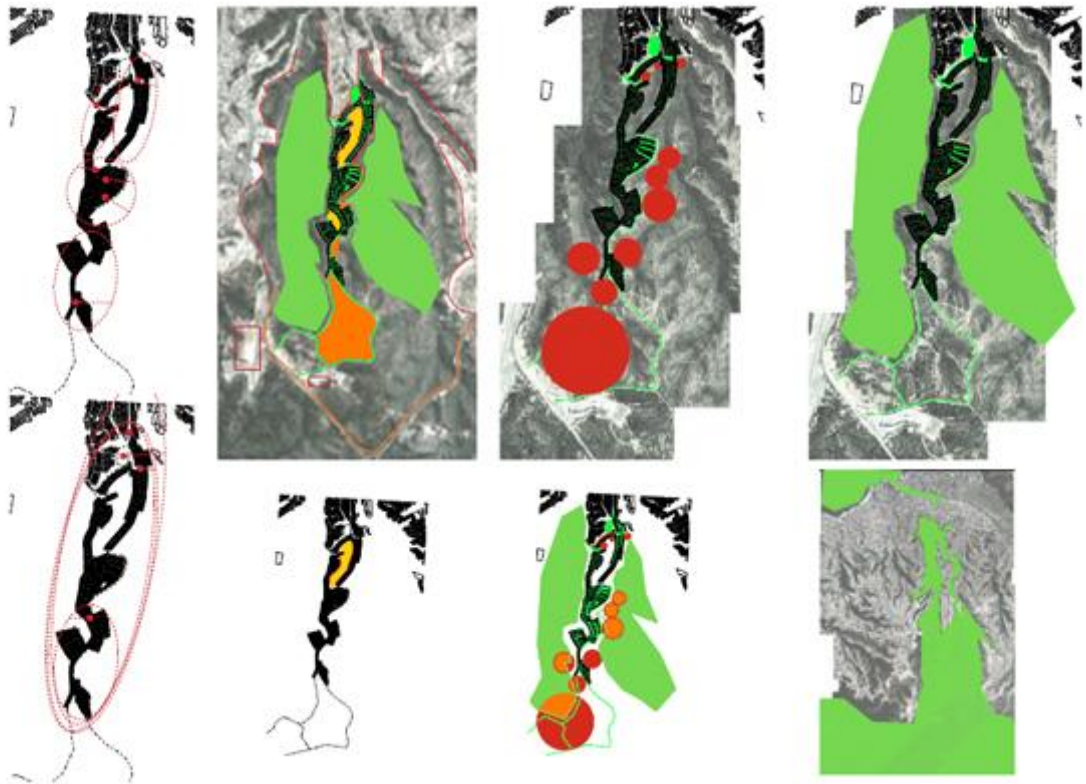
The urbanistic part develops the integrate management of land policies through prescriptive instruments for a qualitative definition of the interventions: a relational system replaces the traditional normative, dismissing the static and accurate parametric formulation of space in order to adopt a dynamic and responsive form of territorial planning in an ever-changing incoherent reality.

At neighborhood scale, programmatic intervention plans are developed; these plans inflect the guide lines of the masterplan according to the territory.

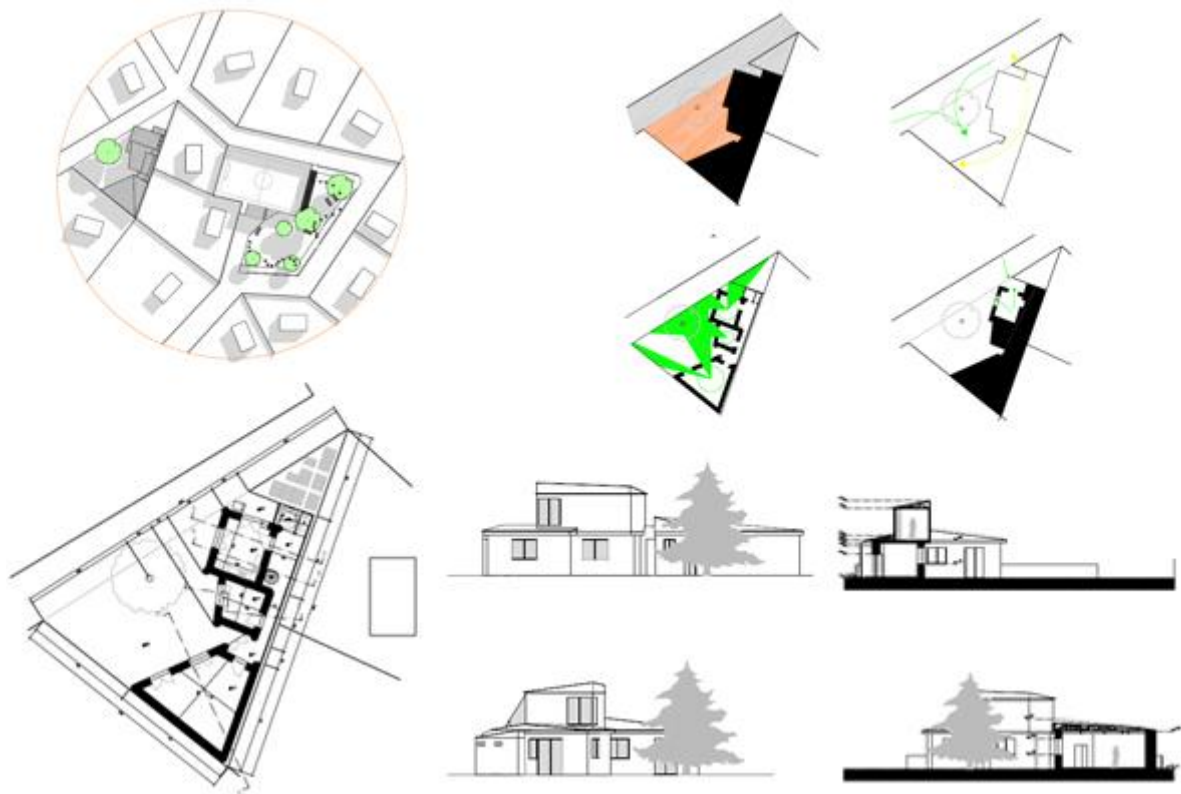
The local plans are another feedback tool that act as an input for the masterplan which has to adopt the local models, reshaping their relations, so that the local growth can freely adapt to local morphology and at the same time they regenerate the global context.

Eventually the architectural intervention is the local actuation of the territorial planning, that materializes the design politics.

The whole process has been carried out through community design strategies.



The study of the territory has been the base for the development of a master plan able to connect all the territorial systems according to a global vision



The preliminary architectural design focus on the relation between architecture and contest and on the generated spatial possibilities

For further information, e-mail:
Contacts: eugenio_bosco@yahoo.it