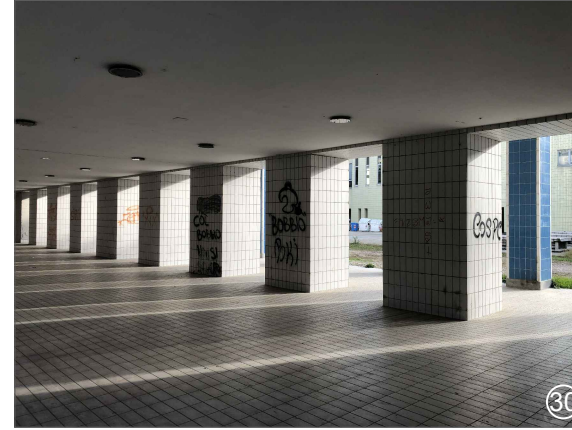




(21-26) "Norberto Bobbio" Hotel management School. Second intervention of Sartori's project, from the small side of the building facing on Via Fricchieri (21, 22) extending through Via Porta Mercatoria (23, 24), reaching Via Umberto I (25, 26).

(23) Entrance of the underground parking.



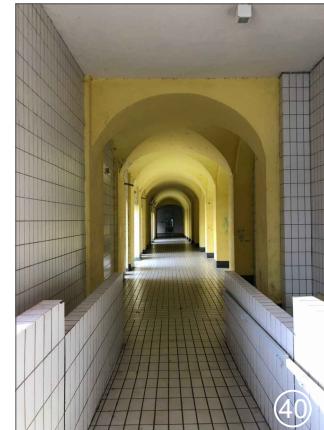
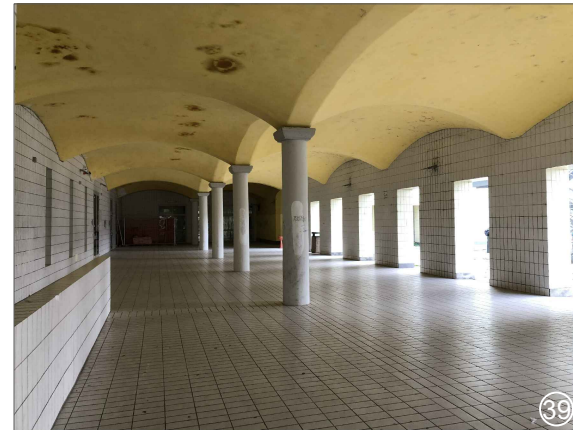
(27, 28) Entrance of the "Norberto Bobbio" Hotel management School.

(29, 30) View from the porches of the latest school extension along Via Umberto I.



(31, 32) View from the internal courtyard of the latest school extension along Via Umberto I.

(33 - 36) View of the internal courtyard where it's possible to see the air inlets and the stairs leading to the underground parking.



(37) View of the internal courtyard where it's possible to see the emergency stairs of the school.

(38) View from the second floor of the emergency stairs of the school.

(39, 40) View from the porches of the school and a gallery that connect the school building to the the one along Via Fricchieri.