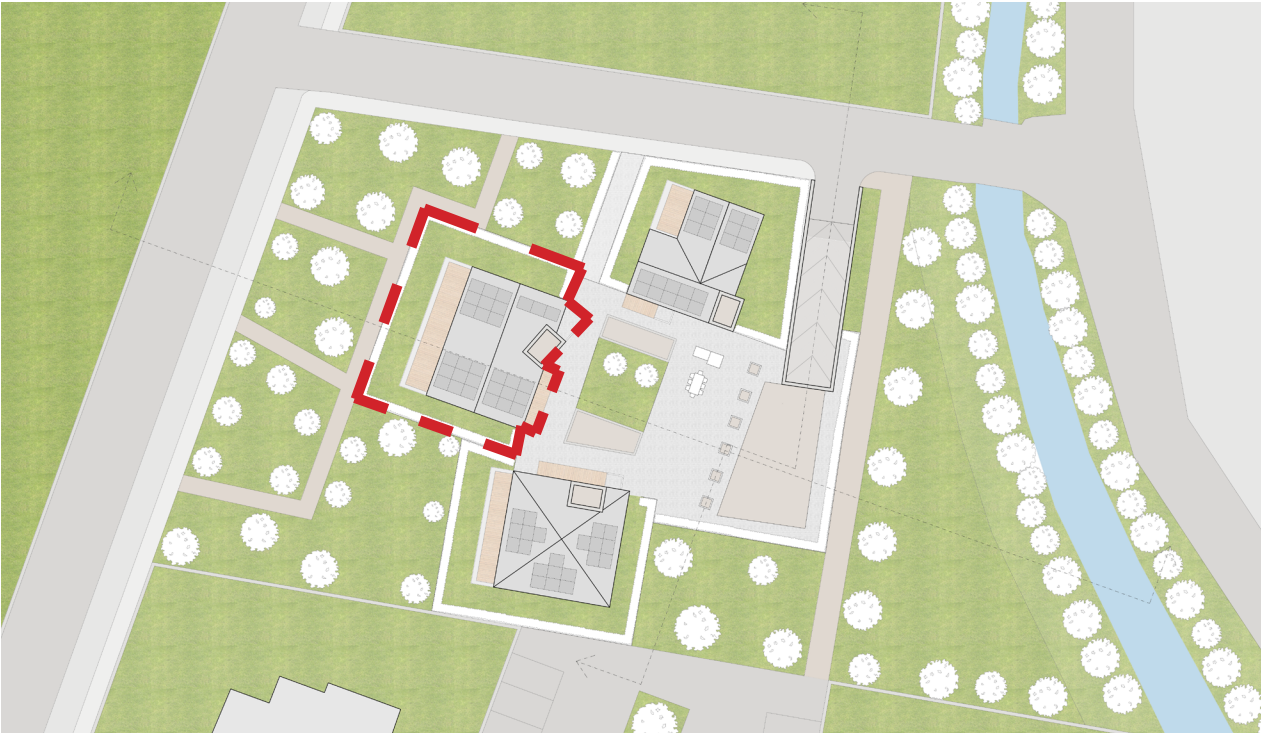


L'EDIFICIO CASO STUDIO



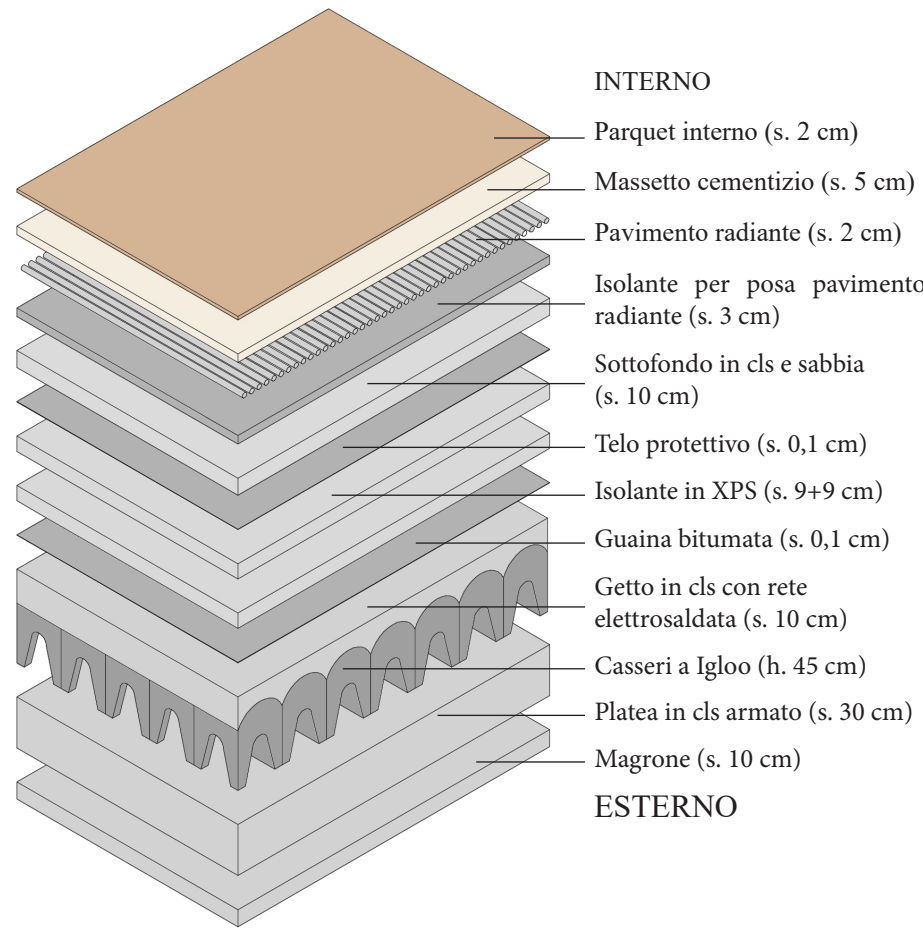
L'edificio caso studio è stato progettato secondo tre diverse soluzioni di involucro edilizio, rispettivamente in calcestruzzo e laterizio, a pannelli in legno portanti “xlam” e a telaio in legno. Ciascuna soluzione si differenzia poi nella scelta dei materiali isolanti, in particolare la prima prevede l’uso di materiali policarburici quali EPS e XPS, la seconda la fibra di legno, la terza i materiali derivanti dalla produzione risicola dell’azienda “RiceHouse”, rispettivamente paglia e lolla di riso.

Le tre tipologie costruttive sono state applicate a parità di soluzione volumetrica, distributiva, estetica, di dotazione impiantistica e di qualità dell’abitare.

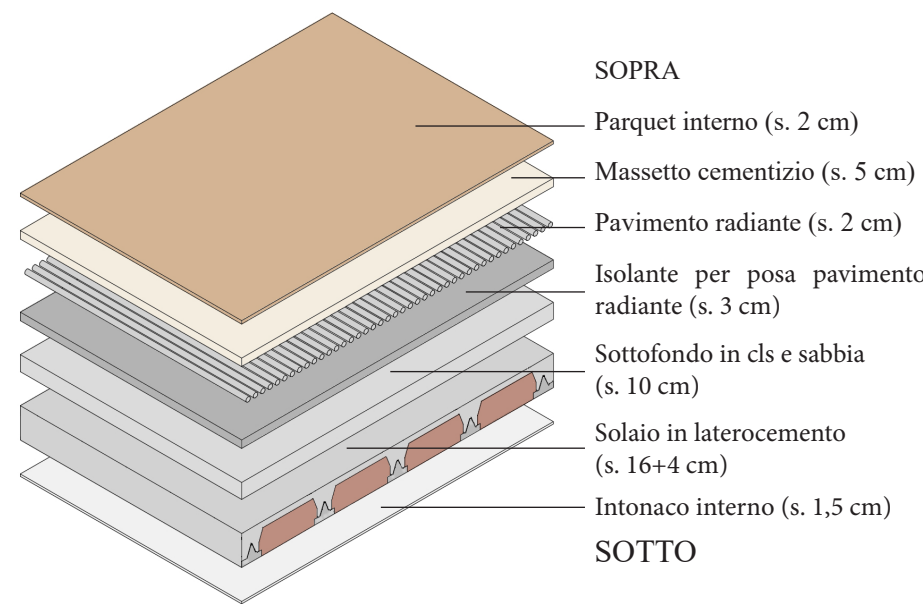
LE TRE SOLUZIONI COSTRUTTIVE

SOLUZIONE 1: CLS E LATERIZIO

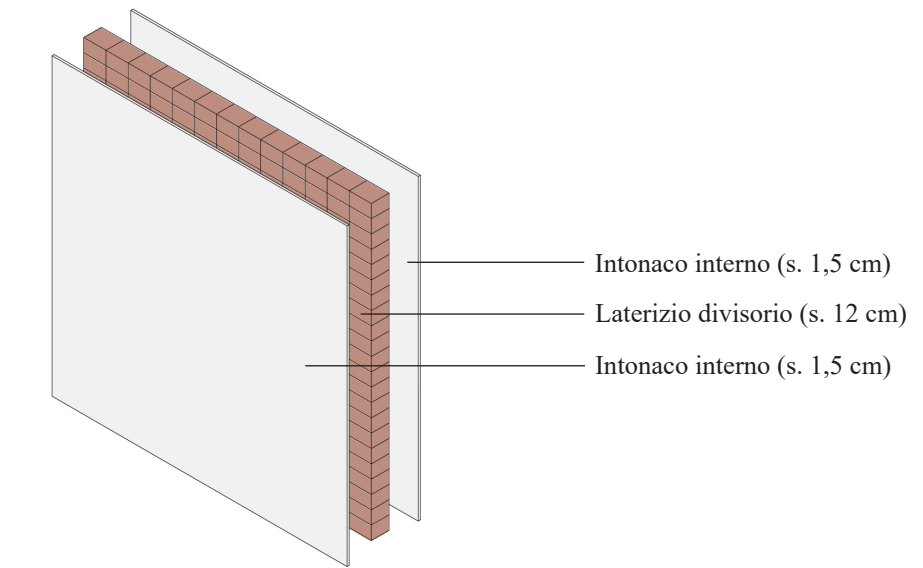
SOLAIO A TERRA



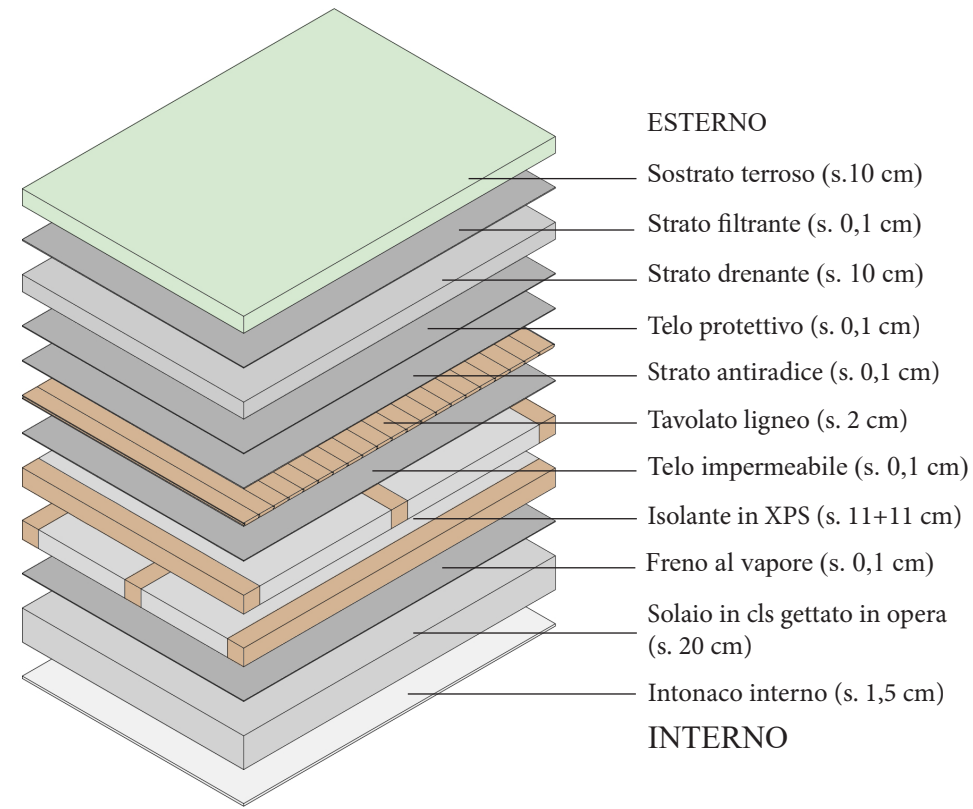
SOLAIO INTERPIANO



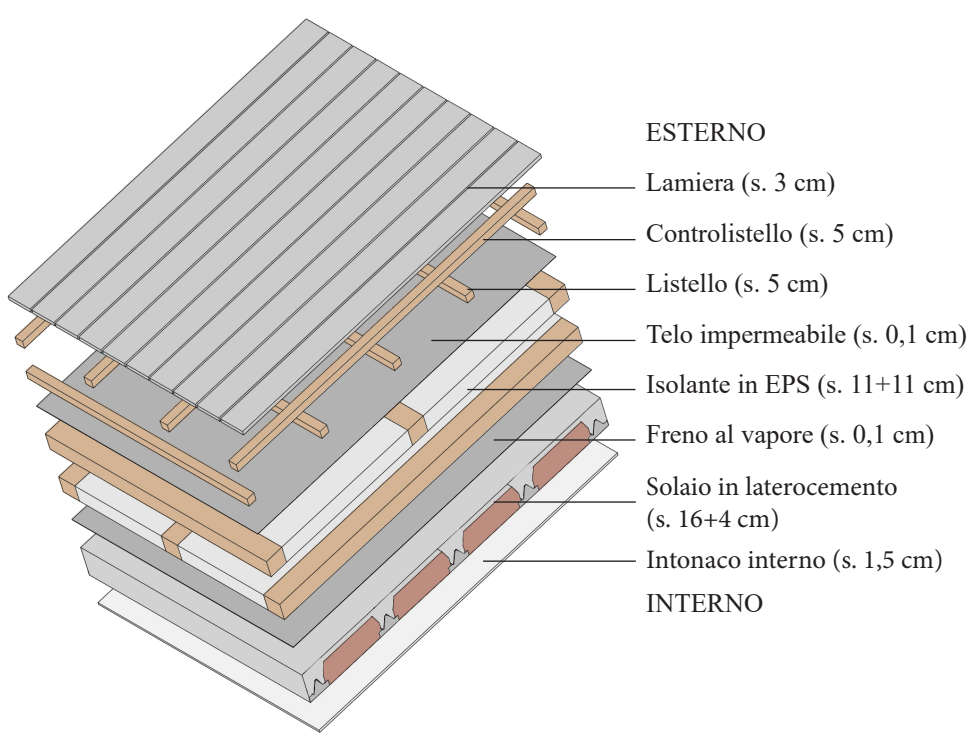
PARETE DIVISORIA INTERNA



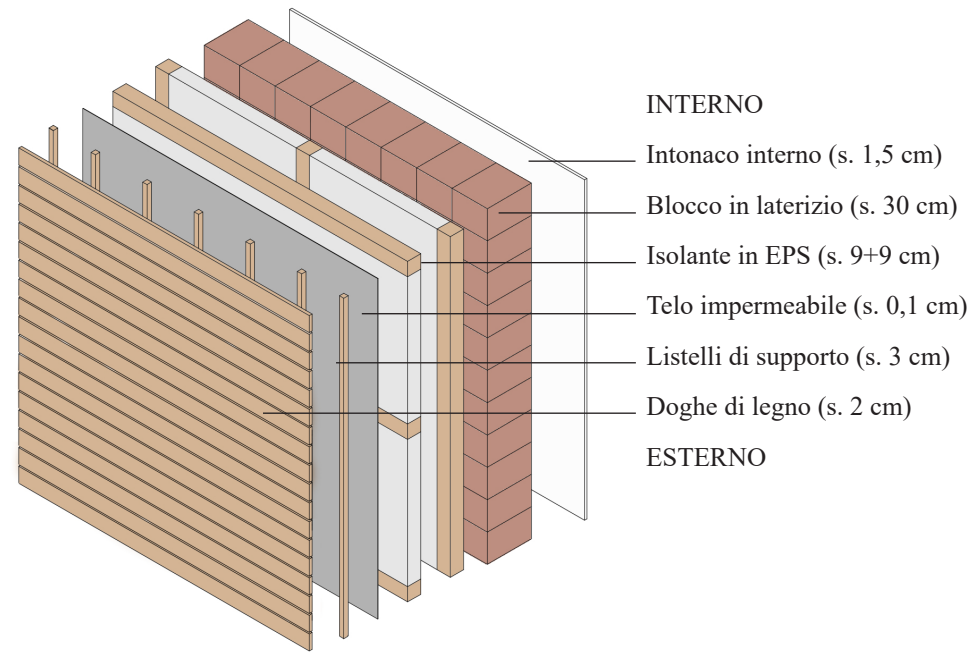
COPERTURA A VERDE



COPERTURA INCLINATA

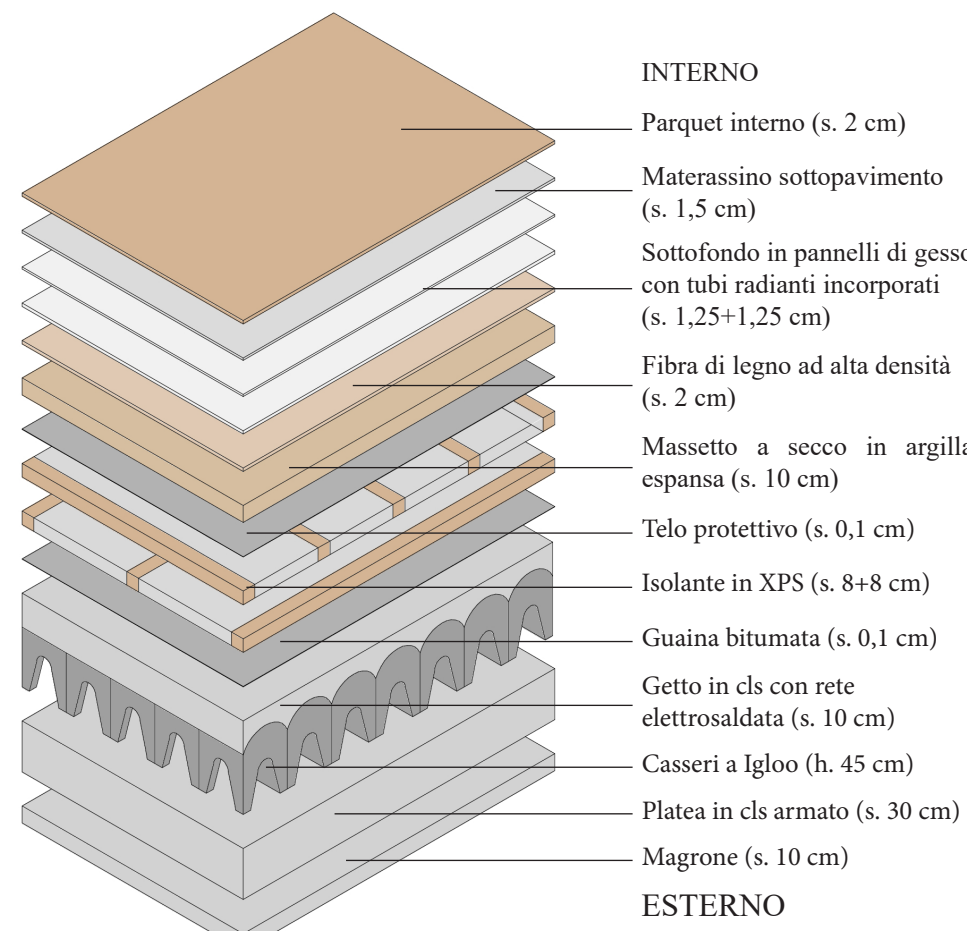


PARETE ESTERNA VERTICALE

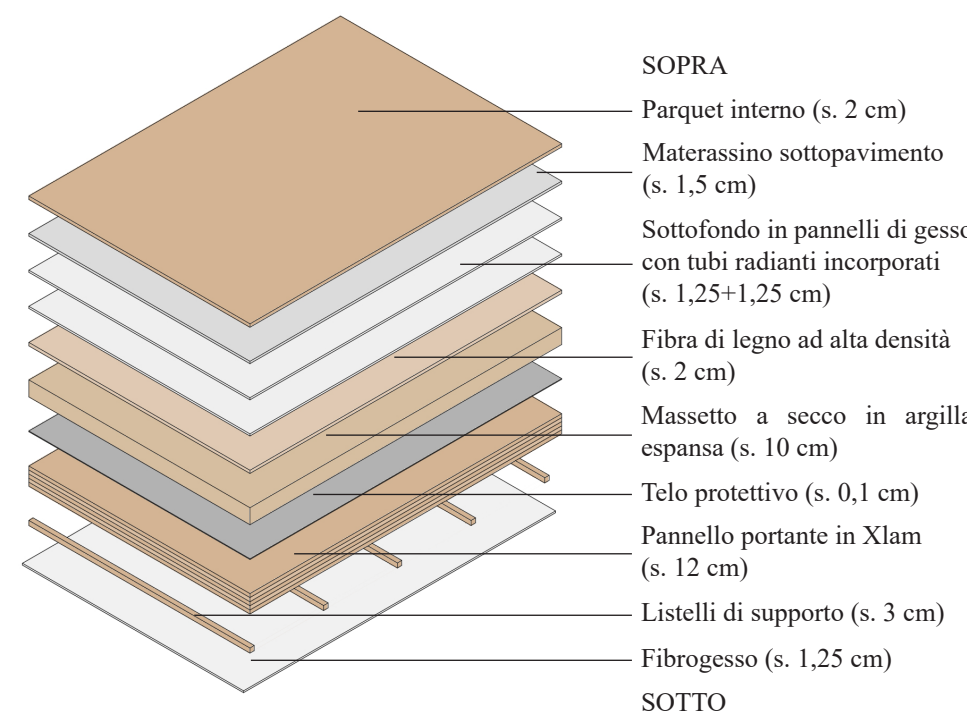


SOLUZIONE 2: XLAM

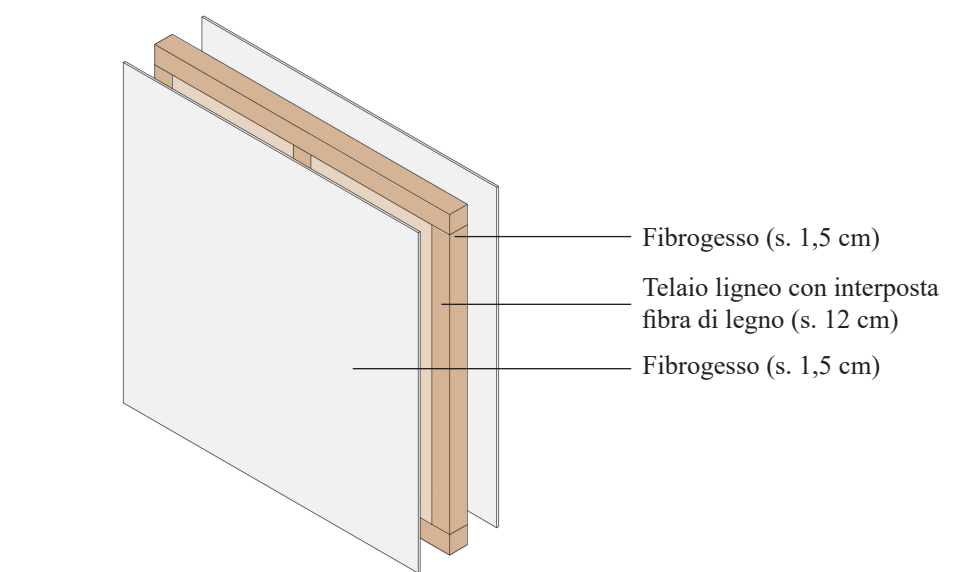
SOLAIO A TERRA



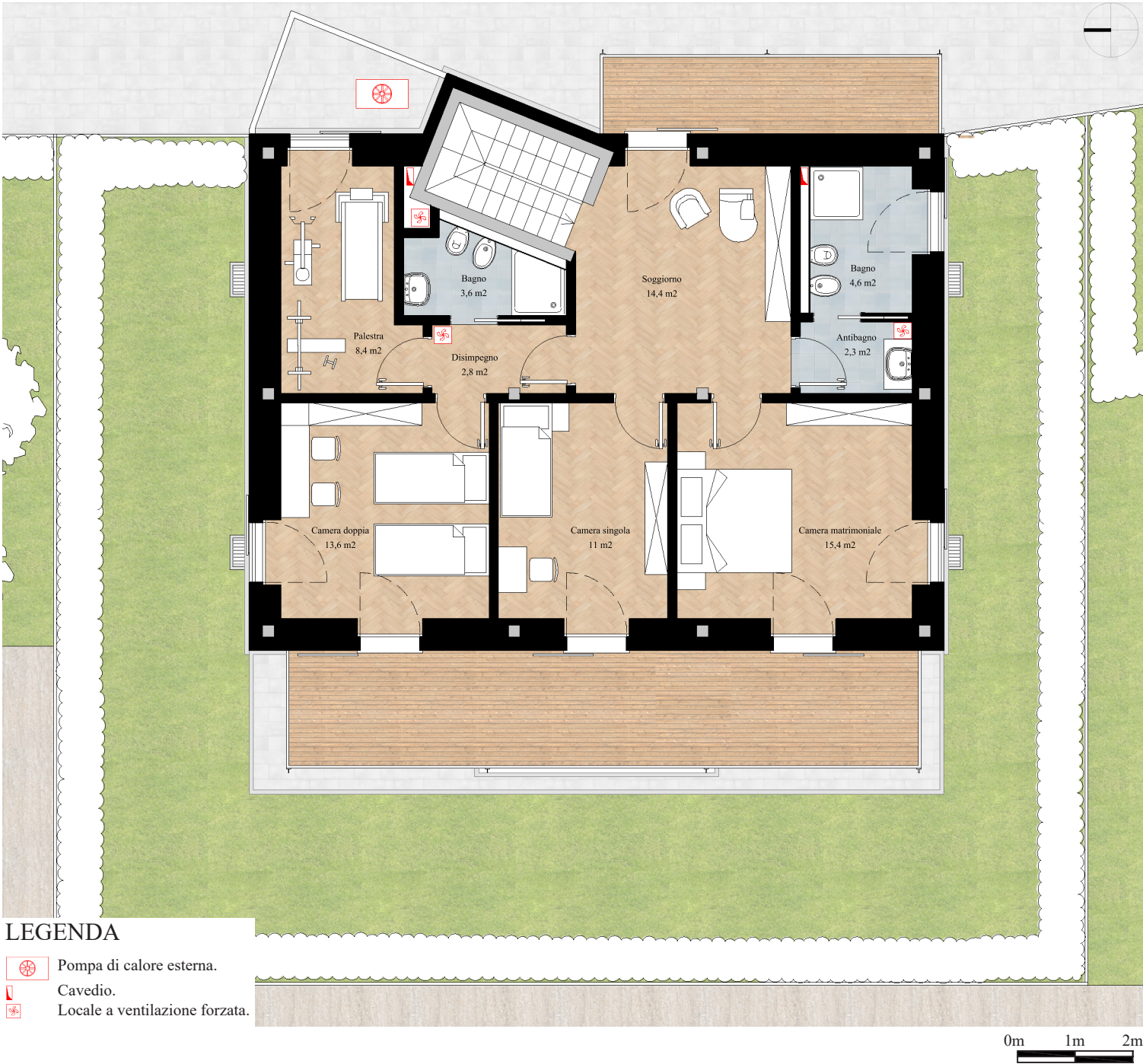
SOLAIO INTERPIANO



PARETE DIVISORIA INTERNA



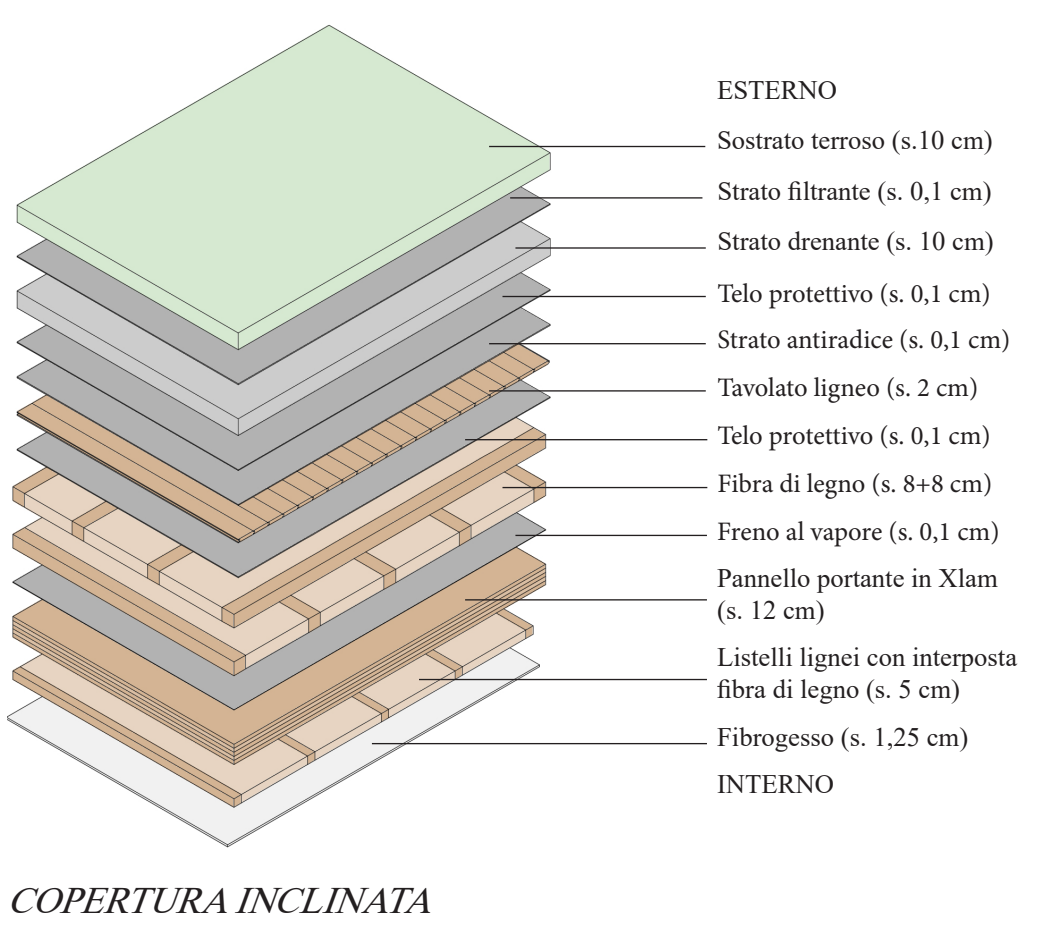
PIANTA PIANO PRIMO
(SCALA 1:100)



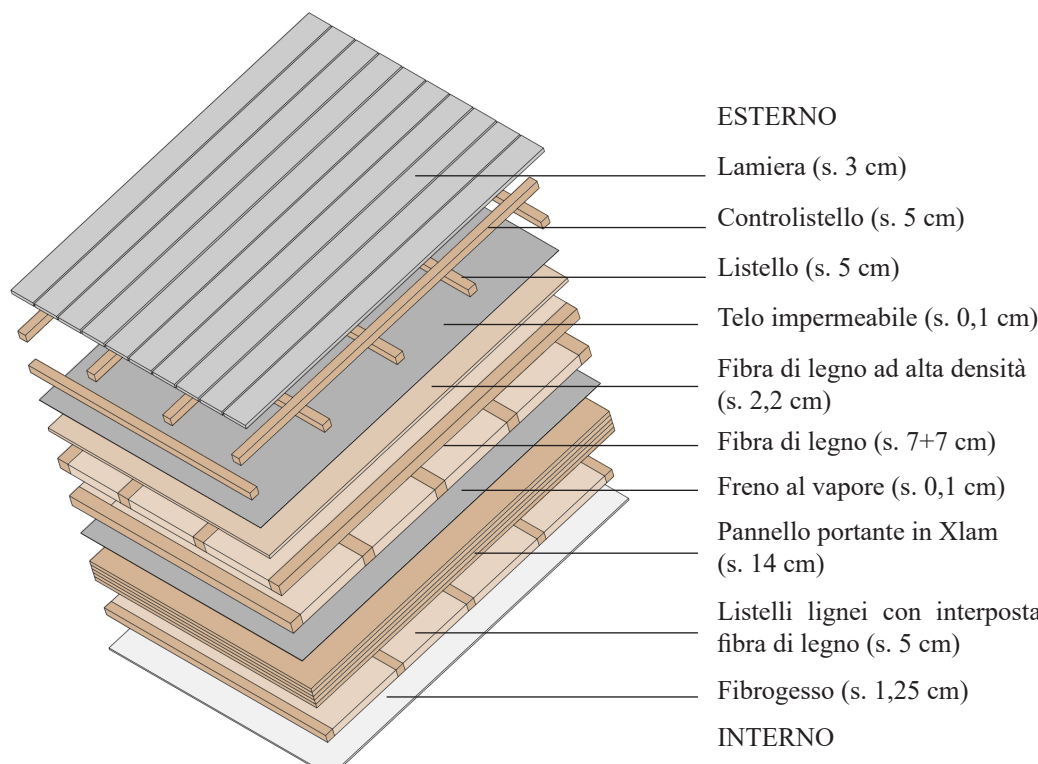
LEGENDA

- Pompa di calore esterna.
- Cavedio.
- Locale a ventilazione forzata.

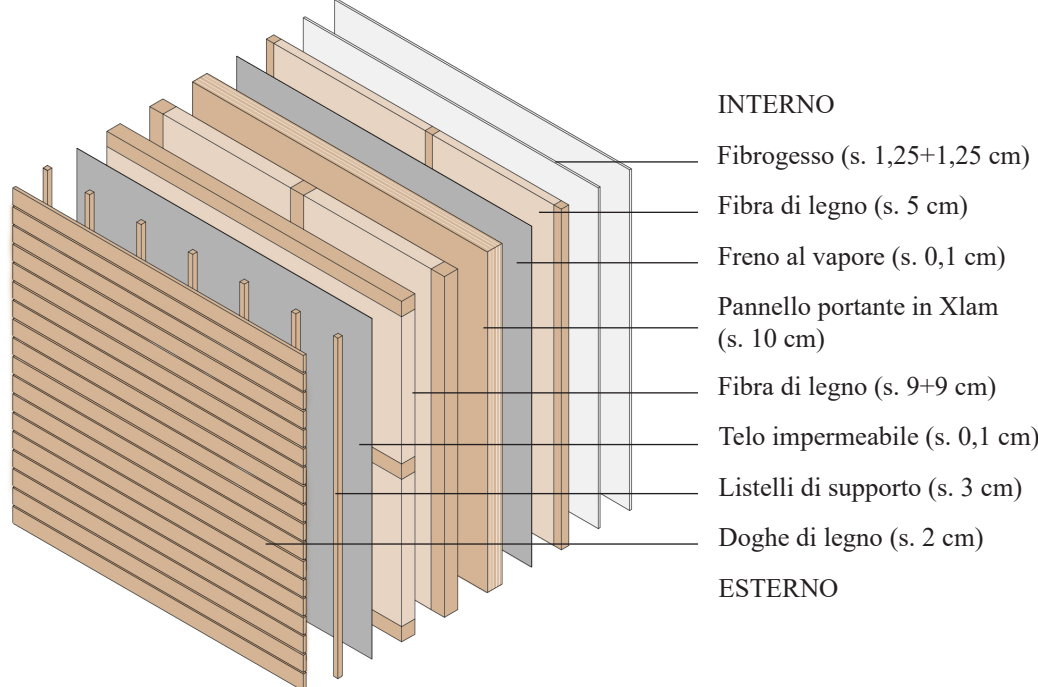
COPERTURA A VERDE



COPERTURA INCLINATA



PARETE ESTERNA VERTICALE



PROSPETTO SUD
(SCALA 1:100)

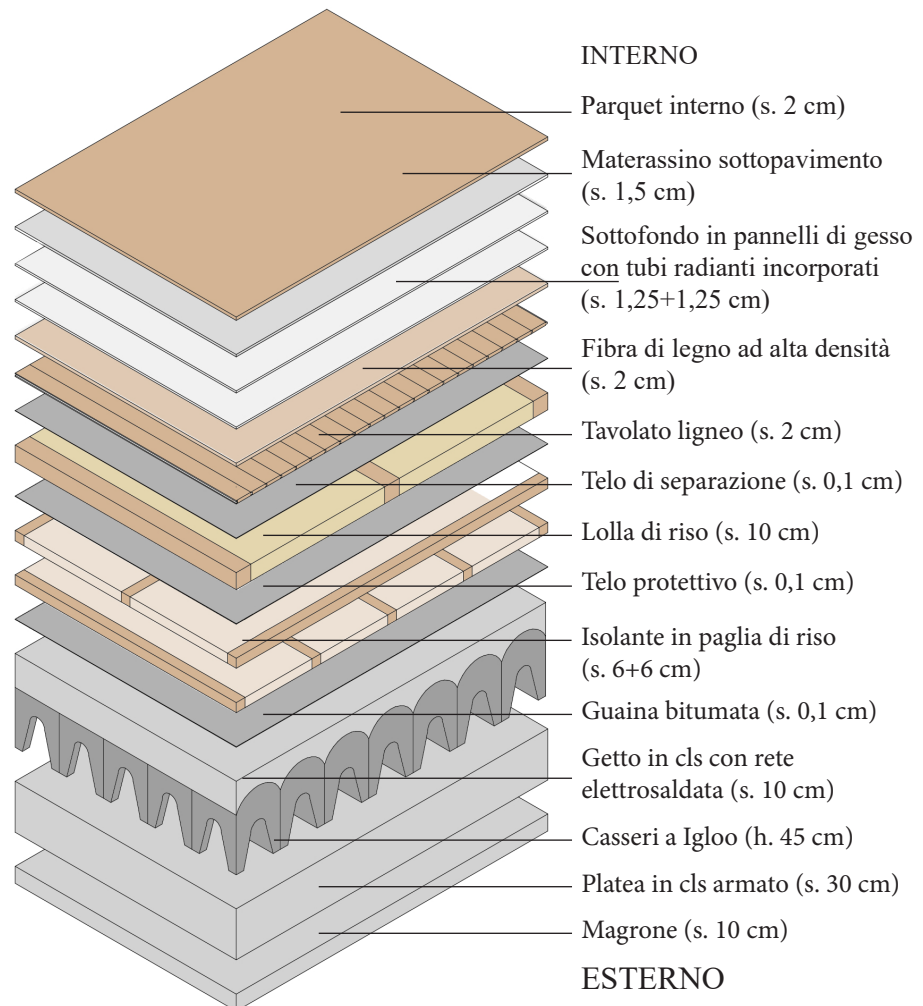


PROSPETTO OVEST
(SCALA 1:100)

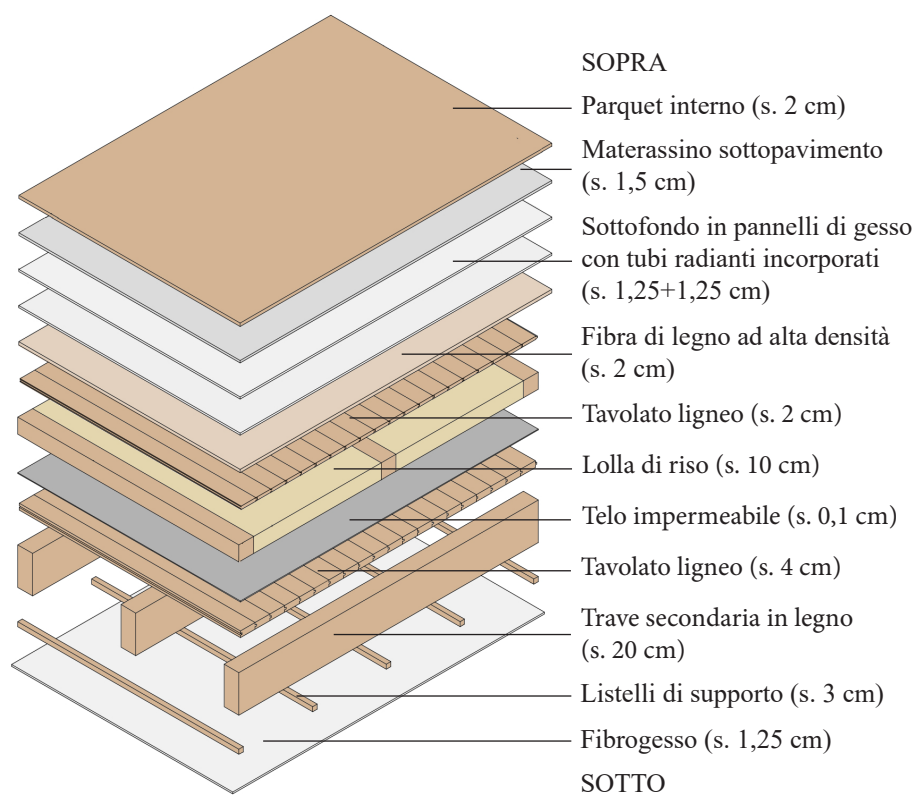


SOLUZIONE 3: TELAIO LIGNEO

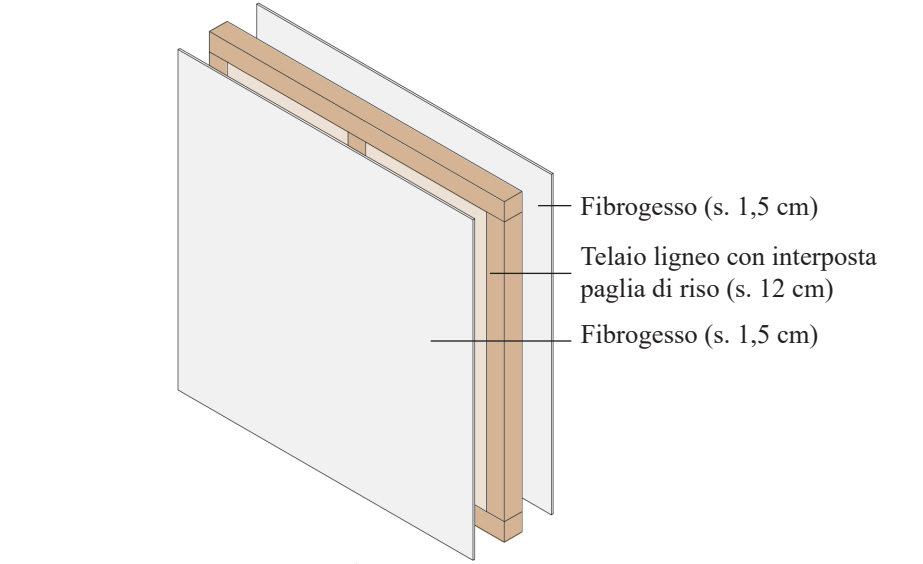
SOLAIO A TERRA



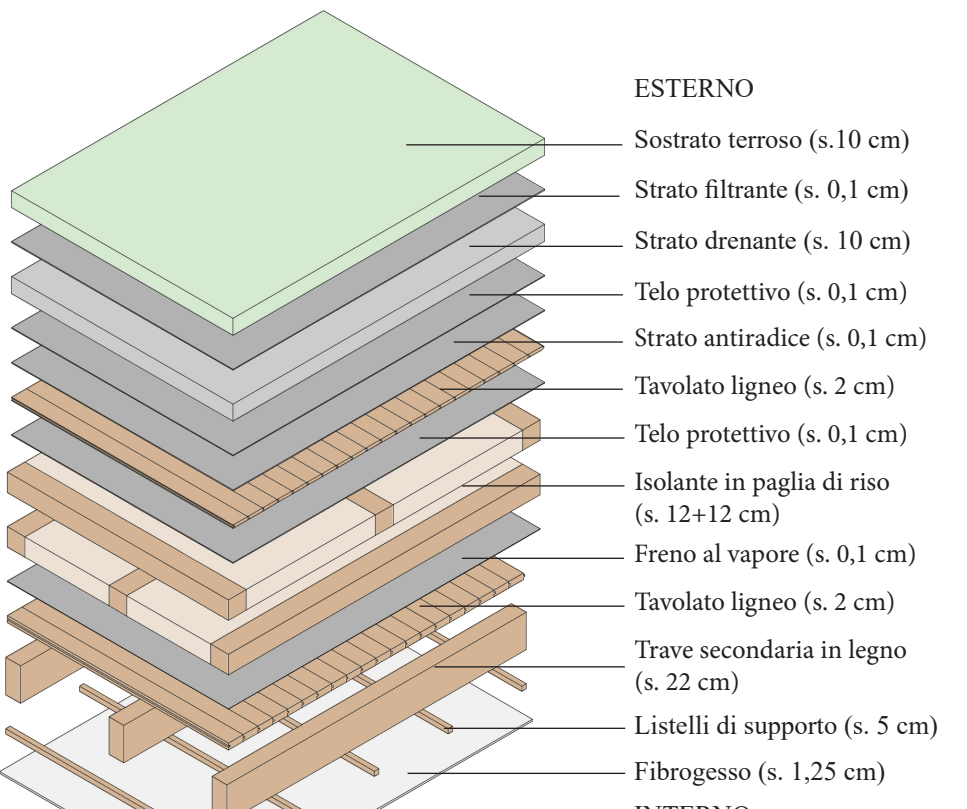
SOLAIO INTERPIANO



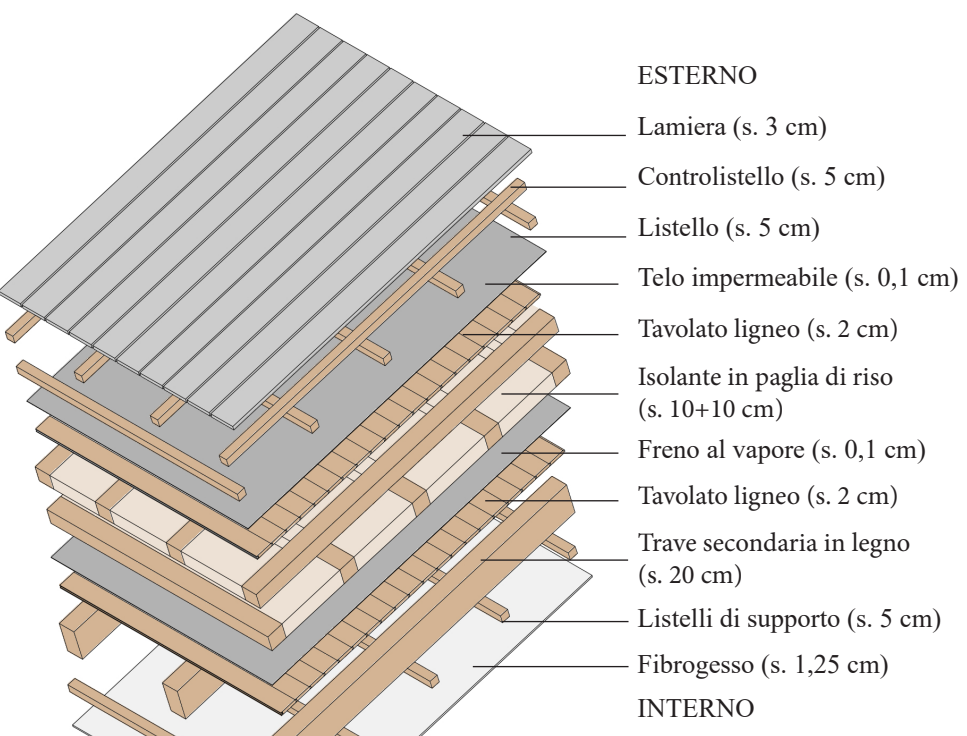
PARETE DIVISORIA INTERNA



COPERTURA A VERDE



COPERTURA INCLINATA



PARETE ESTERNA VERTICALE

