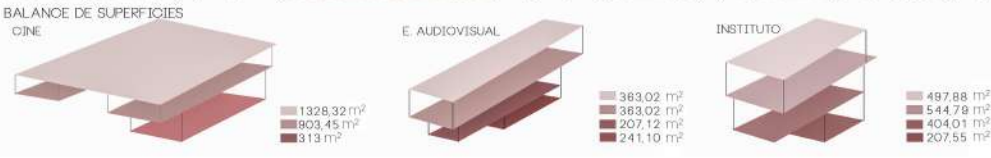
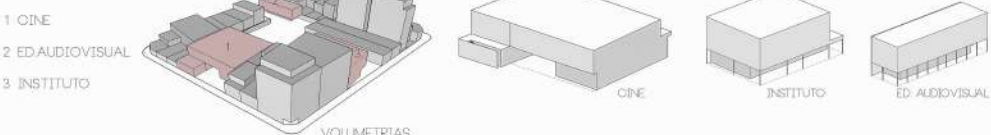


MASTERPLAN

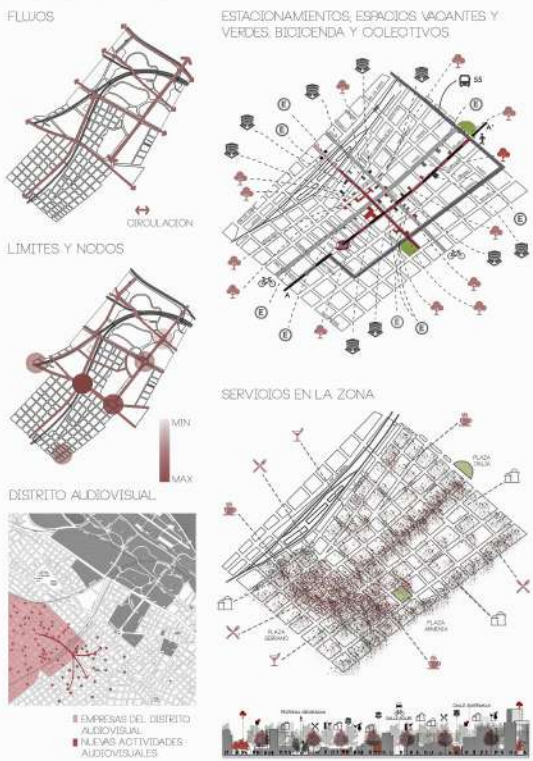
LOCALIZACION



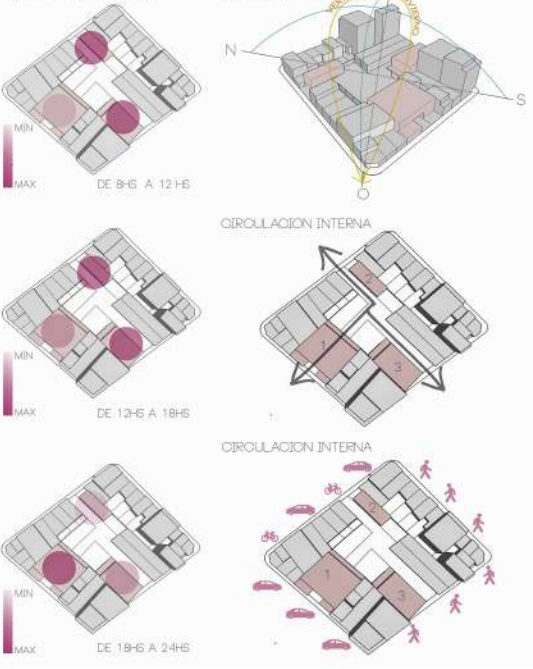
PROPUESTA CENTRO CULTURAL AUDIOVISUAL



ANÁLISIS DEL LUGAR



USOS SEGUN HORARIO



CENTRO CULTURAL AUDIOVISUAL

EL CENTRO CULTURAL AUDIOVISUAL SE ENCUENTRA UBICADO EN UNA MANZANA EN EL CENTRO DEL BARRIO DE PALERMO SOHO, COMPRENDIDO ENTRE LAS CALLES JORGE LUIS BORGES, NICARAGUA, THAMES Y COSTA RICA. CONTINUANDO CON EL DISTRITO AUDIOVISUAL QUE SE ENCUENTRA DEL OTRO LADO DE LA AV. JUAN B. JUSTO, SE PLANTEAN 3 EDIFICIOS CON DIFERENTES USOS Y UN PULMÓN DE MANZANA COMÚN. POR UN LADO, UN CINE, CON 3 SALAS DE PROYECCIÓN Y UN RESTAURANT; UN INSTITUTO CON TALLERES, LABORATORIOS Y MICROCINE; Y POR ÚLTIMO, UN EDIFICIO AUDIOVISUAL CON ESTUDIOS DE GRABACIÓN. EL PULMÓN DE MANZANA ACTÚA COMO LA CONTINUACIÓN DE LAS PEATONALES SOBRE NICARAGUA Y J. L. BORGES, ENFATIZANDO LA CONEXIÓN NO SÓLO ENTRE LOS EDIFICIOS, SINO ENTRE ESTOS Y LA CALLE.

CINE



PLANTA BAJA



PLANTA ALTA



VISTA FORNTAL



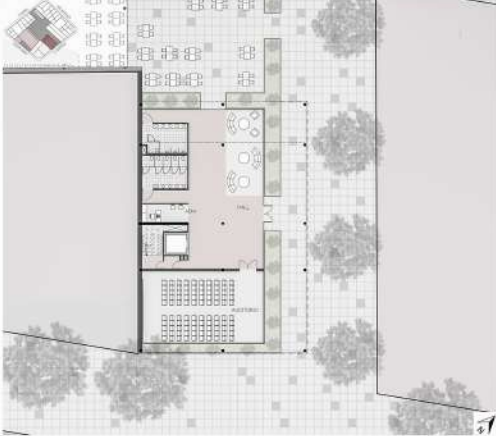
CORTE LONGITUDINAL



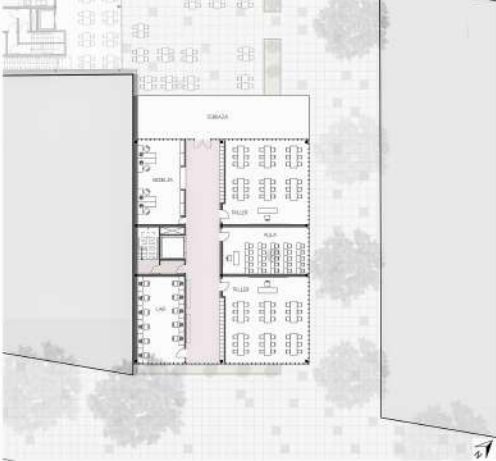
INSTITUTO AUDIOVISUAL



PLANTA BAJA



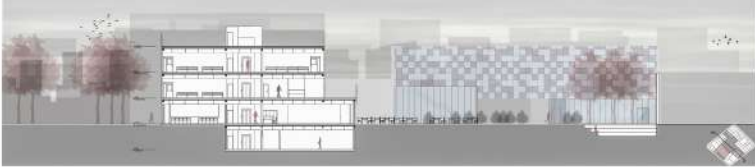
PLANTA TIPO



VISTA FORNTAL



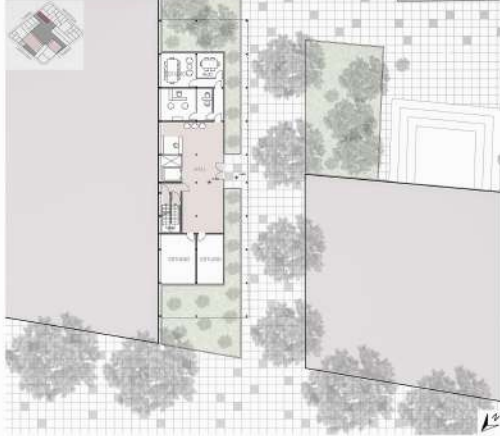
CORTE LONGITUDINAL



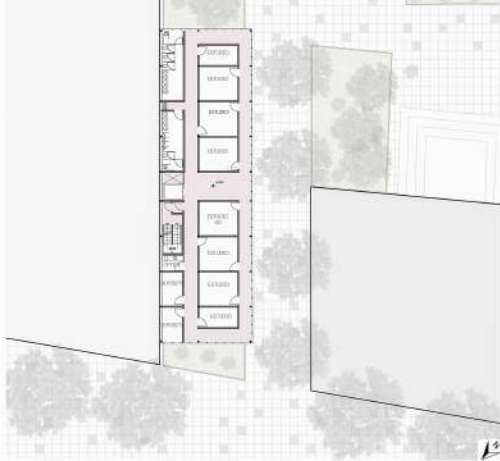
ESTUDIO AUDIOVISUAL



PLANTA BAJA



PLANTA TIPO

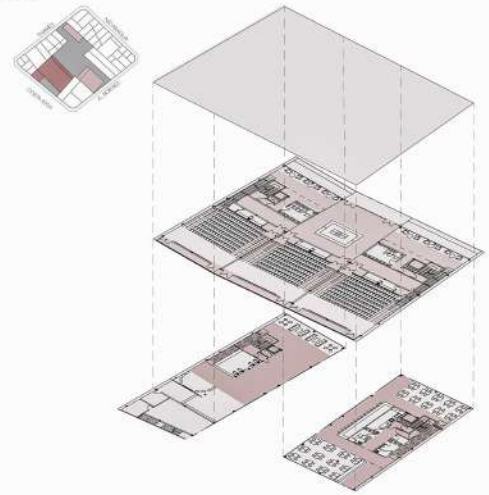


VISTA FORNTAL

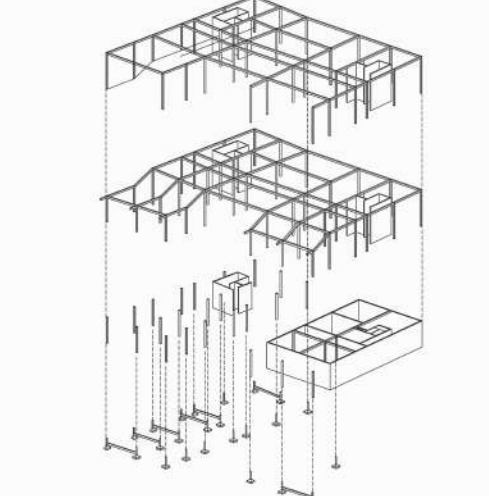


DOCUMENTACION TECNICA

CINE



ESQUEMA ESTRUCTURAL

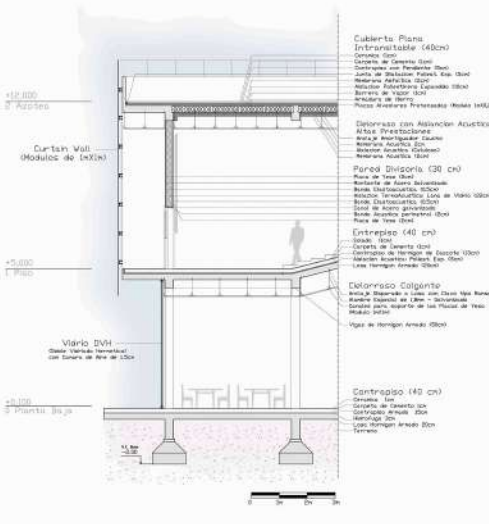


SECCION LONGITUDINAL

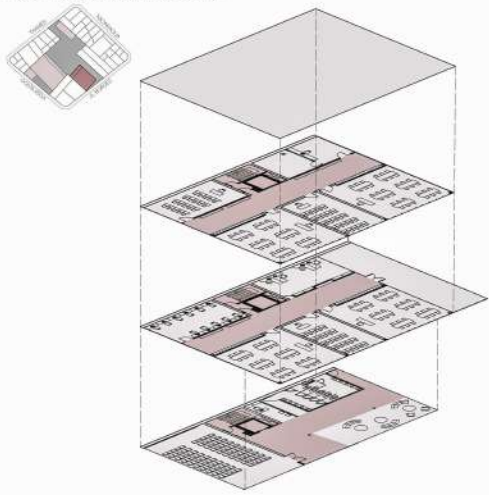


S/E A-A

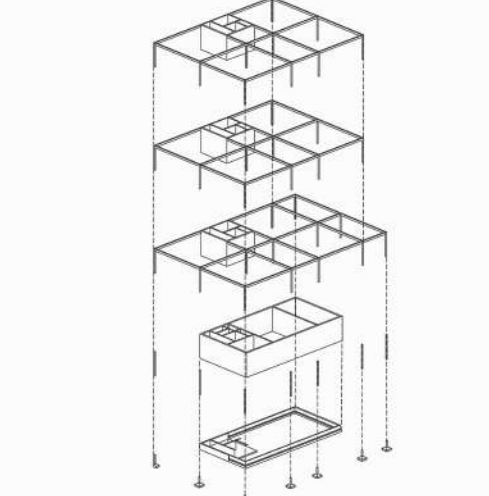
DETALLE CONSTRUCTIVO



INSTITUTO AUDIOVISUAL



ESQUEMA ESTRUCTURAL

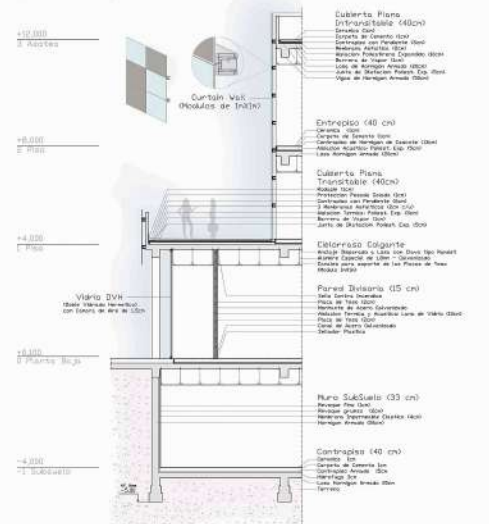


SECCION LONGITUDINAL

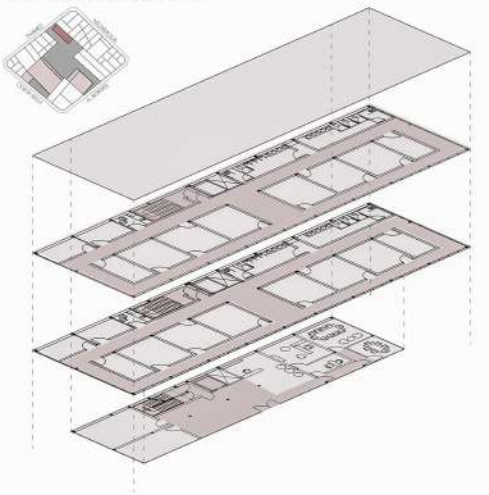


S/E A-A

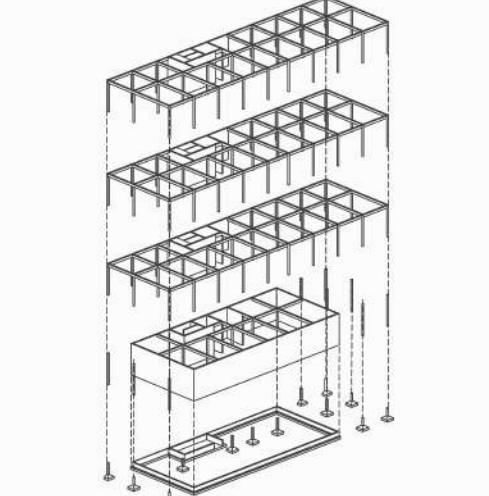
DETALLE CONSTRUCTIVO



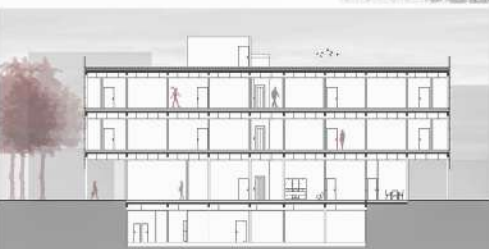
EDIFICIO AUDIOVISUAL



ESQUEMA ESTRUCTURAL

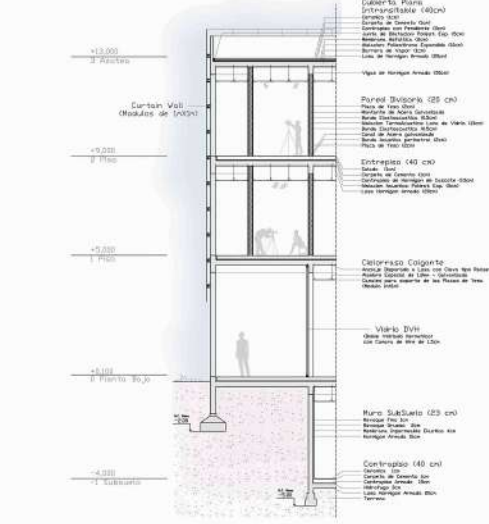


SECCION LONGITUDINAL



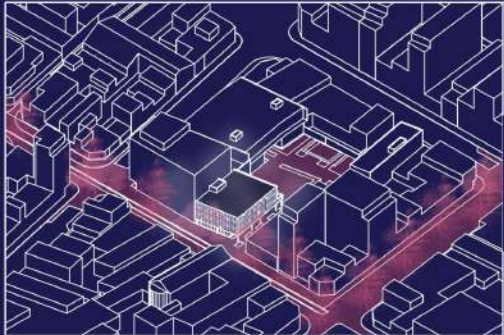
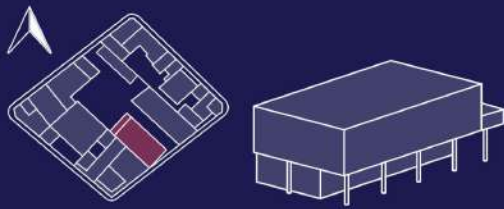
S/E A-A

DETALLE CONSTRUCTIVO

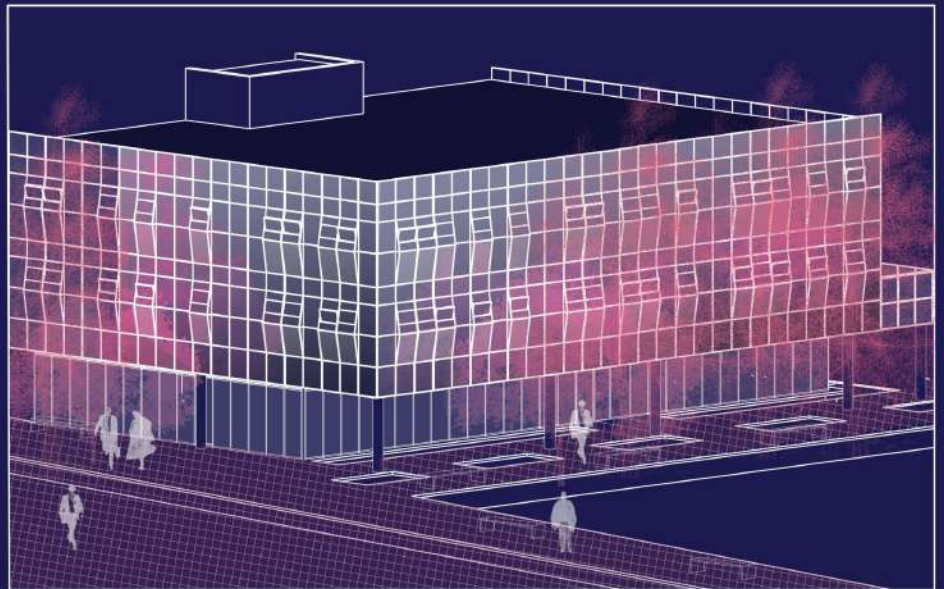


FACCIATA CON RIFLESSI

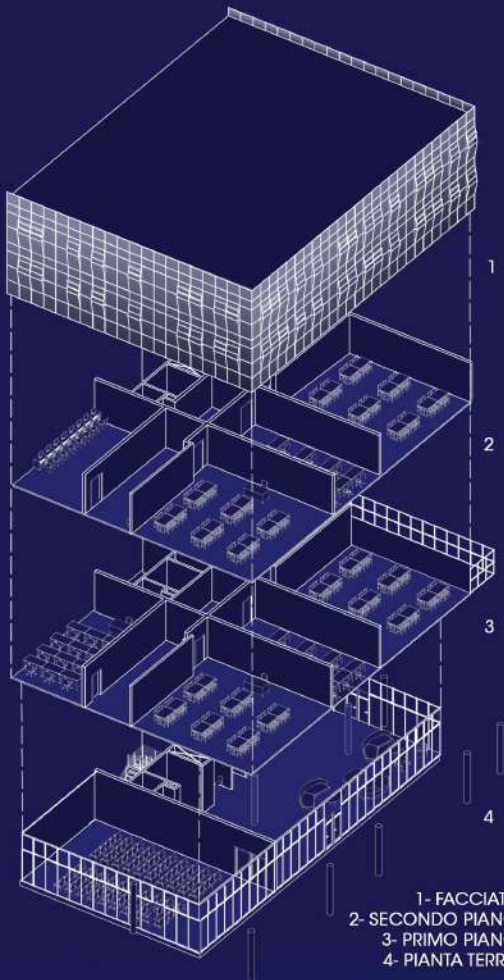
ISTITUTO AUDIOVISUALE



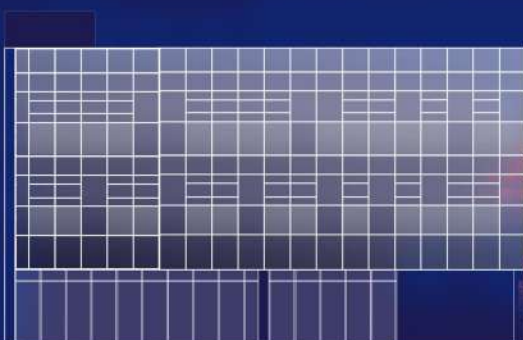
ASSONOMETRIA URBANA



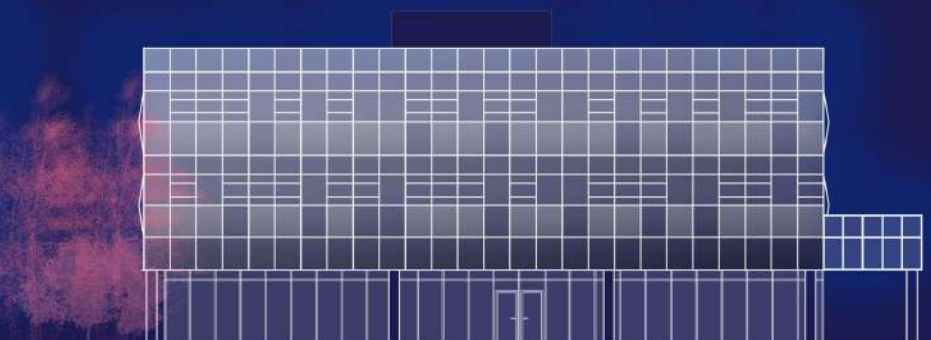
ASSONOMETRIA



1- FACCIATA
2- SECONDO PIANO
3- PRIMO PIANO
4- PIANTA TERRA



PROSPETTO FRONTALE 1:200



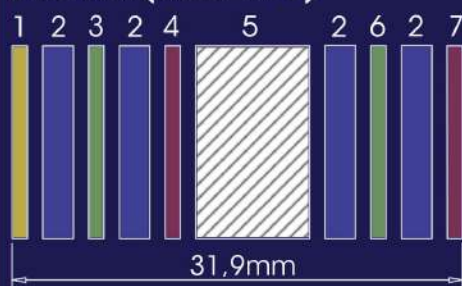
PROSPETTO LATERALE 1:200

FACCIATA CON RIFLESSI

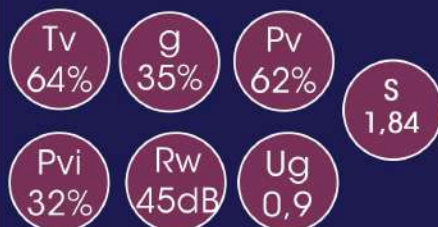


AGC GLASS

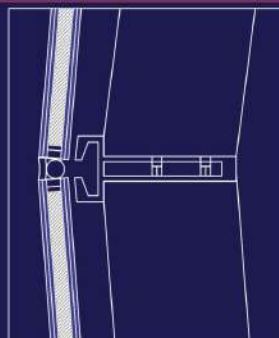
STOPRAY (SELETTIVO)



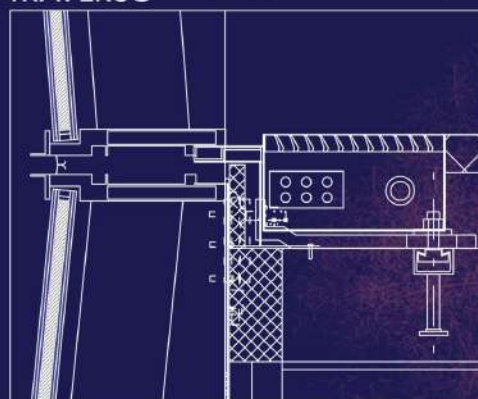
- 1- Mirox 4Green
- 2- Planibel Clearlite 4mm
- 3- PVC acustico 0,5mm
- 4- Stopray
- 5- Argon 90% 15mm
- 6- PVC Clear 0,38mm
- 7- Planibel G fast



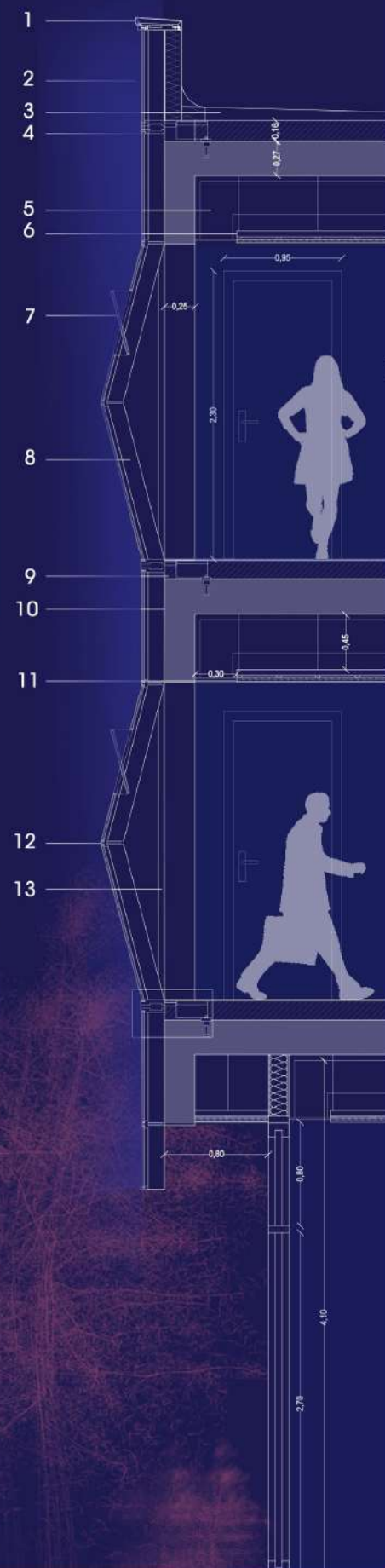
STRUTTURA DI CONNESSIONE



TRAVERSO

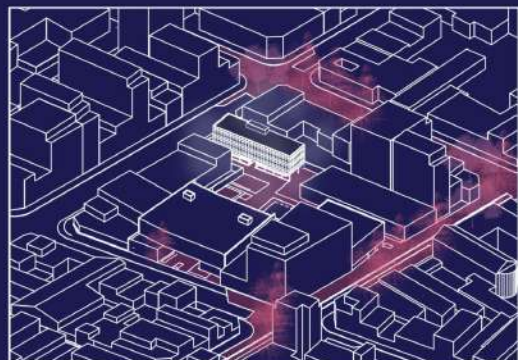
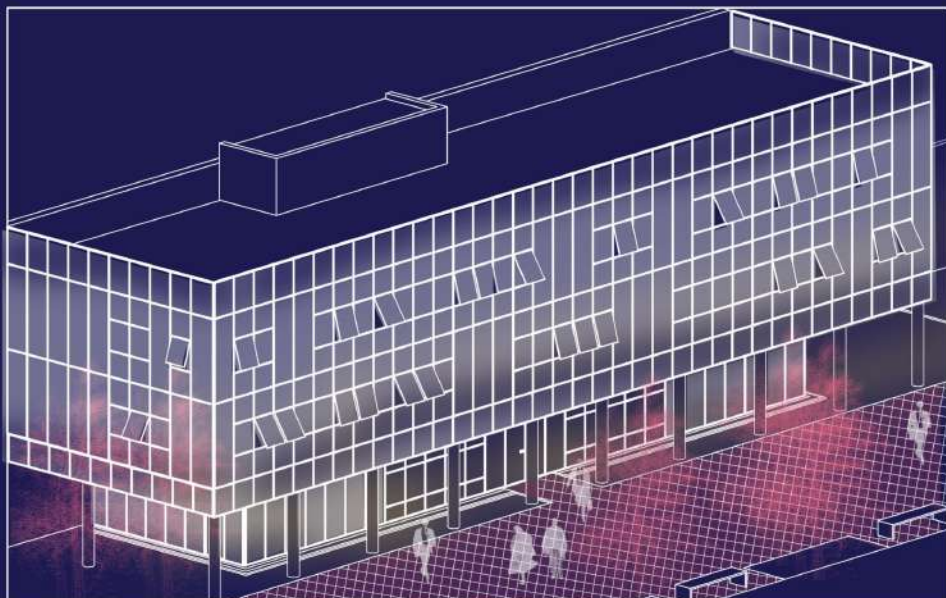
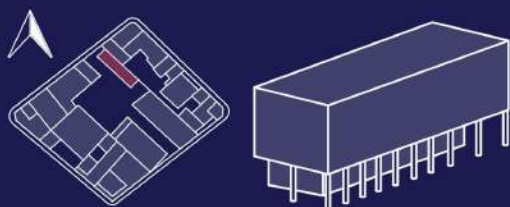


- 1- Parapetto in lamiera metallica piegata
- 2- Parete vetrata
- 3- Pavimentazione
- 4- Traverso
- 5- Ventilazione
- 6- Soffitto sospeso
- 7- Vetro pivotante
- 8- Montante in alluminio estruso
- 9- Sottofondo in calcestruzzo con macerie
- 10- Lastra in cemento armato
- 11- Isolamento del soffitto
- 12- Struttura di connessione dei pannelli
- 13- Struttura della facciata



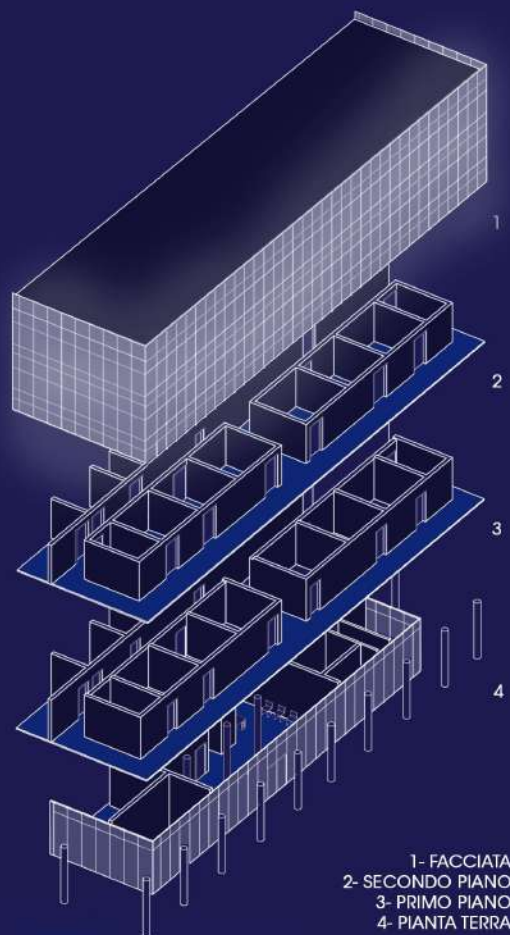
EDIFICIO AUDIOVISUALE

FACCIATA TRASLUCIDA



ASSONOMETRIA URBANA

ASSONOMETRIA



1- FACCIATA
2- SECONDO PIANO
3- PRIMO PIANO
4- PIANTA TERRA

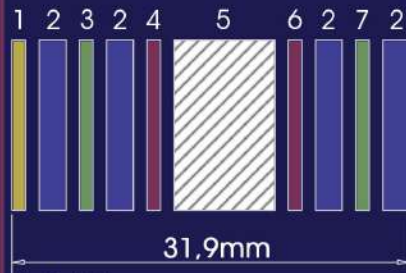


PROSPETTO FRONTALE 1:200

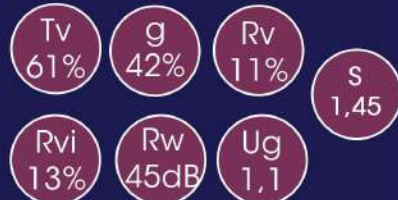
PROSPETTO LATERALE 1:200

FACCIATA TRASLUCIDA

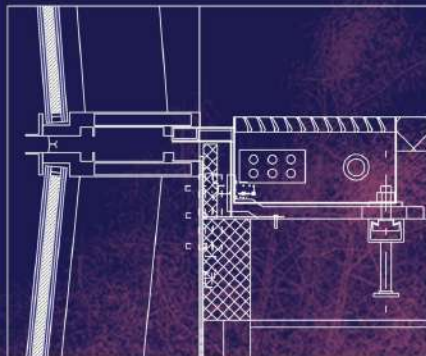
VETRO AGC GLASS SUNENERGY (SELETTIVO)



- 1- Matelux
- 2- Planibel Clearlite 4mm
- 3- PVC acustico 0,5mm
- 4- Sunergy
- 5- Argon 90% 15 mm
- 6- Iplus 1.1
- 7- PVC Clear 0,38mm



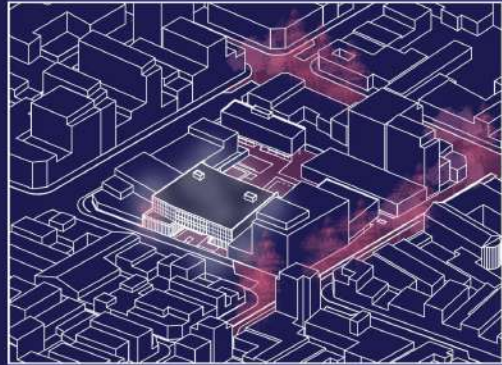
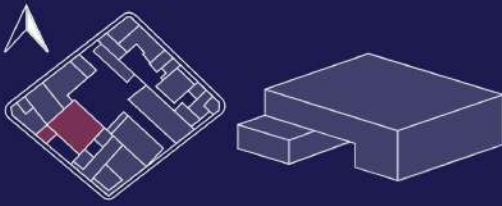
TRAVERSI DELLA FACCIATA CON SIGILANTE STRUTTURALE



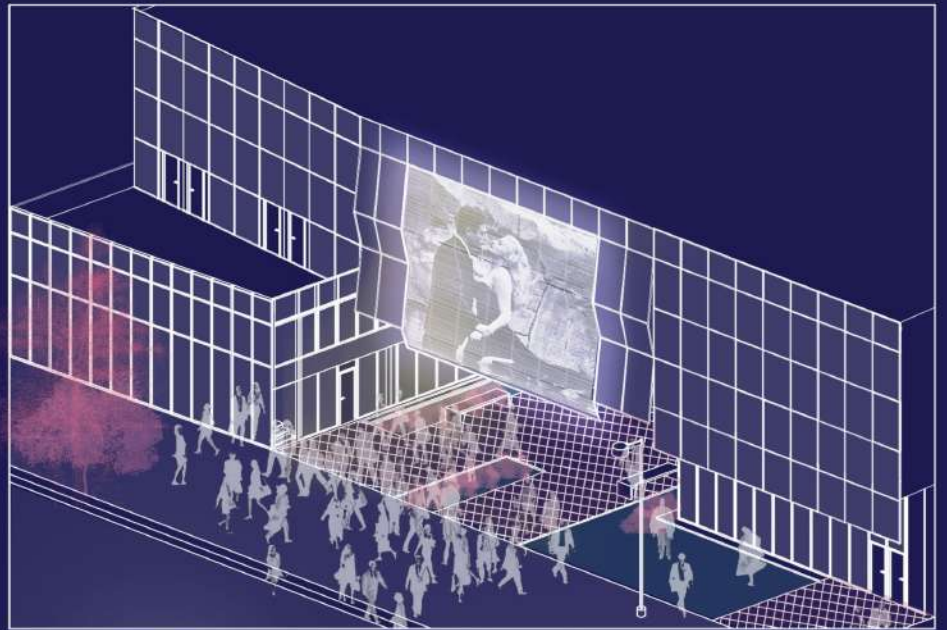
- 1- Parapetto in lamiera metallica piegata
- 2- Pavimentazione
- 3- Sottofondo in calcestruzzo con macerie
- 4- Traverso della facciata con sigillante strutturale
- 5- Oscilobatente Vetro
- 6- Pavimentazione
- 7- Soffitto sospeso
- 8- Montante della facciata
- 9- Lastra in cemento armato

FACCIATA TECNOLOGICA

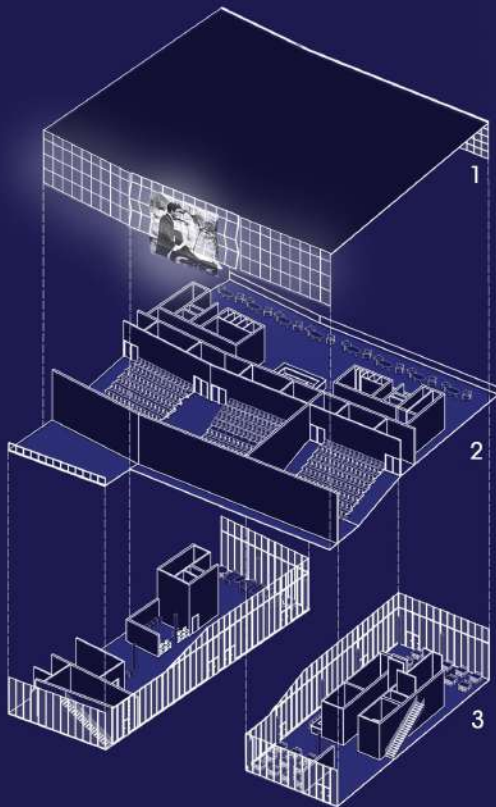
CINEMA



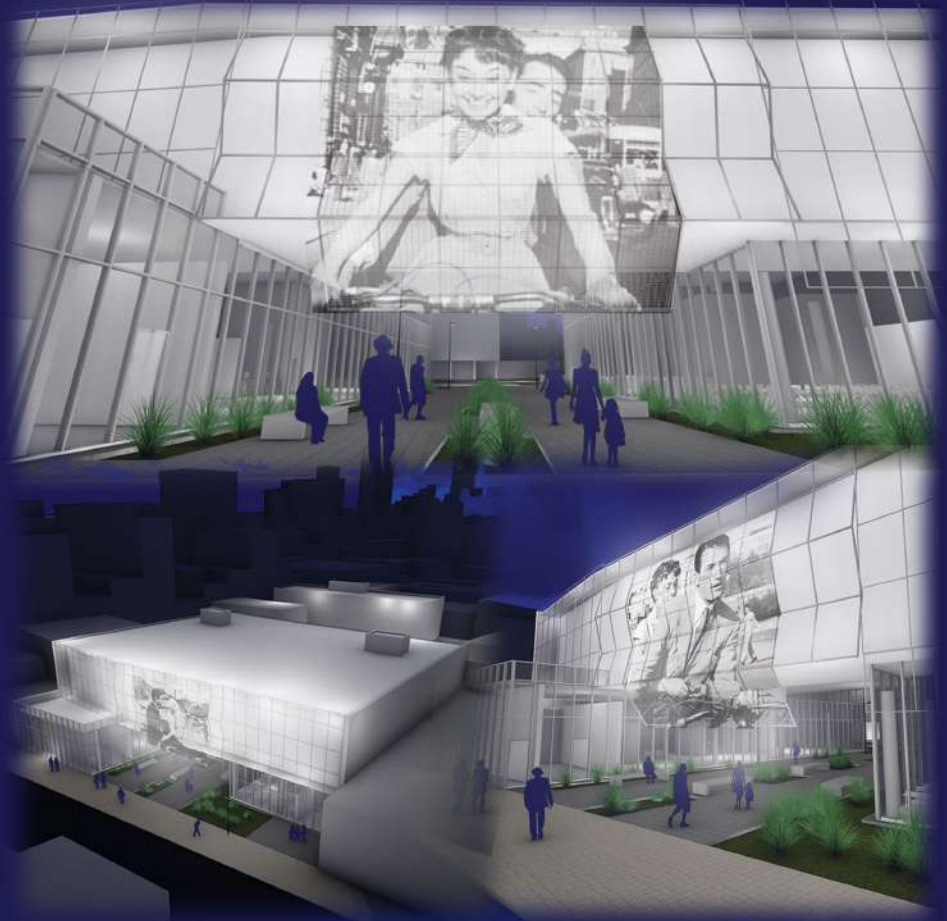
ASSONOMETRIA URBANA



ASSONOMETRIA



1- FACCIATA
2- PRIMO PIANO
3- PIANO TERRA



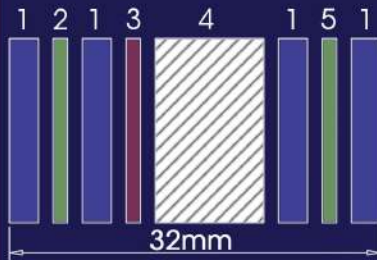
PROSPETTO FRONTALE 1:200



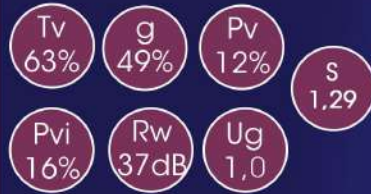
SEZIONE 1:200

FACCIATA TECNOLOGICA

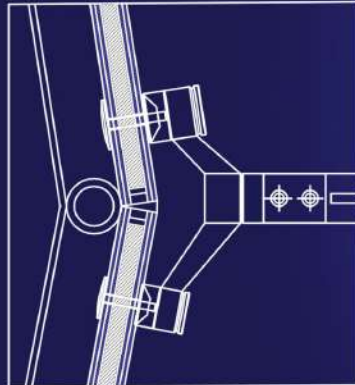
VETRO AGC GLASS SUNENERGY



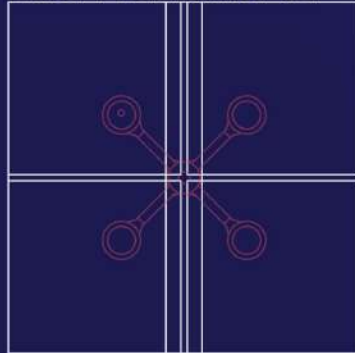
- 1- Planibel Clearlite 4 mm
- 2- Acoustic PVC Clear 0,5mm
- 3- Sunergy
- 4- Argon 90% 15mm
- 5- PVC Clear 0,5mm



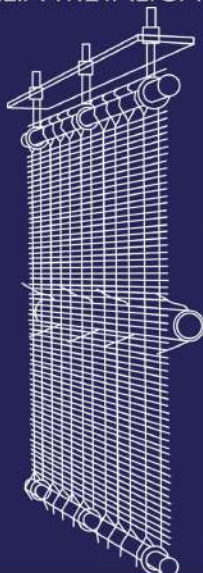
GIUNTO "RAGNO"



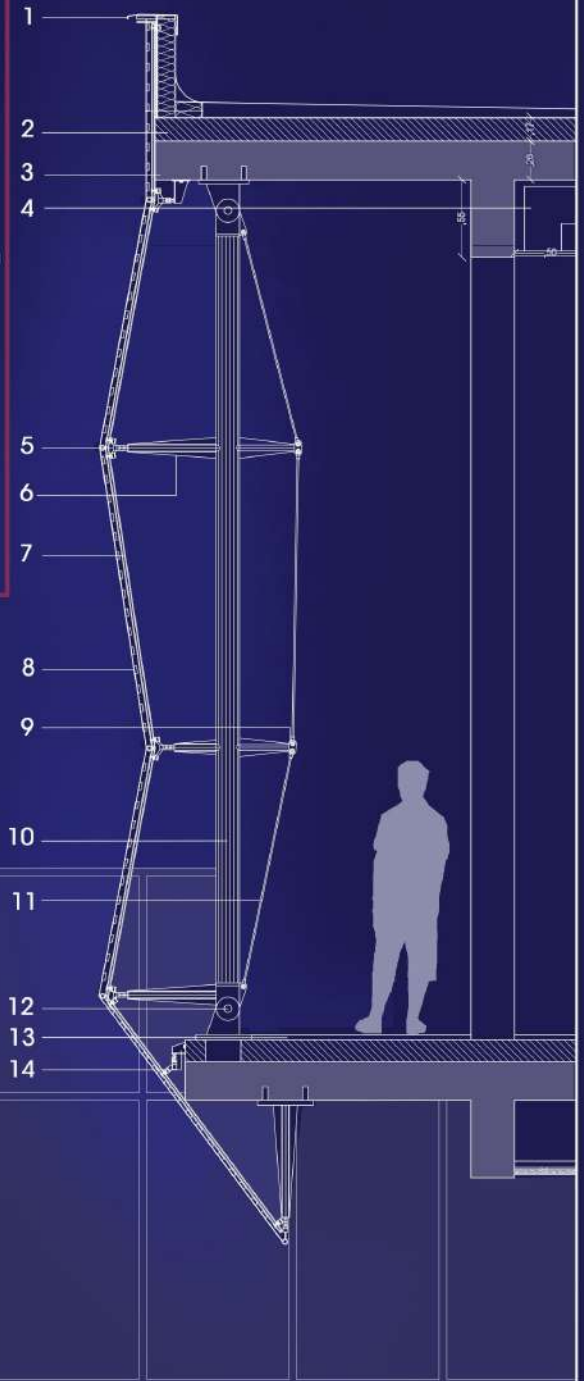
UNIONE DEI CRISTALLI



MALIA METALICA



- 1- Parapetto in lamiera metal.
- 2- Sottofondo in clz con macerie
- 3- Lastra in cemento armato
- 4- Ventilazione
- 5- Giunto "RAGNO" in acciaio
- 6- Supporto di acciaio
- 7- Vetro
- 8- Rete metallica con LED
- 9- Perno
- 10- Pilastro di acciaio 15cm d
- 11- Tiranti
- 12- Piastra di acciaio di 1/4"
- 13- Pavimentazione
- 14- Ancoraggio corpo del ragno



SHOWING
TONIGHT

NEON LIGHTS

