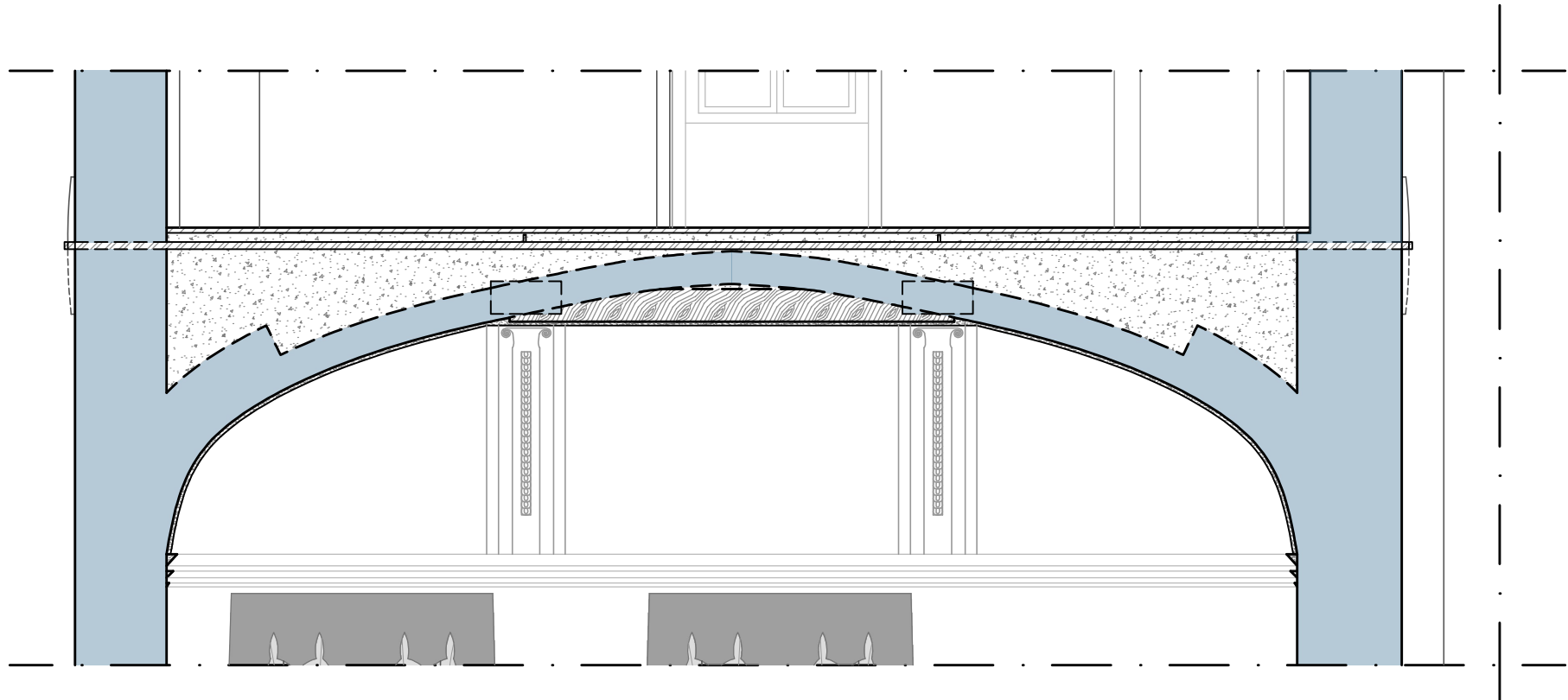


**Legenda**

- Videoendoscopia punto di indagine
- Cono ottico
- Profilo a scarpa

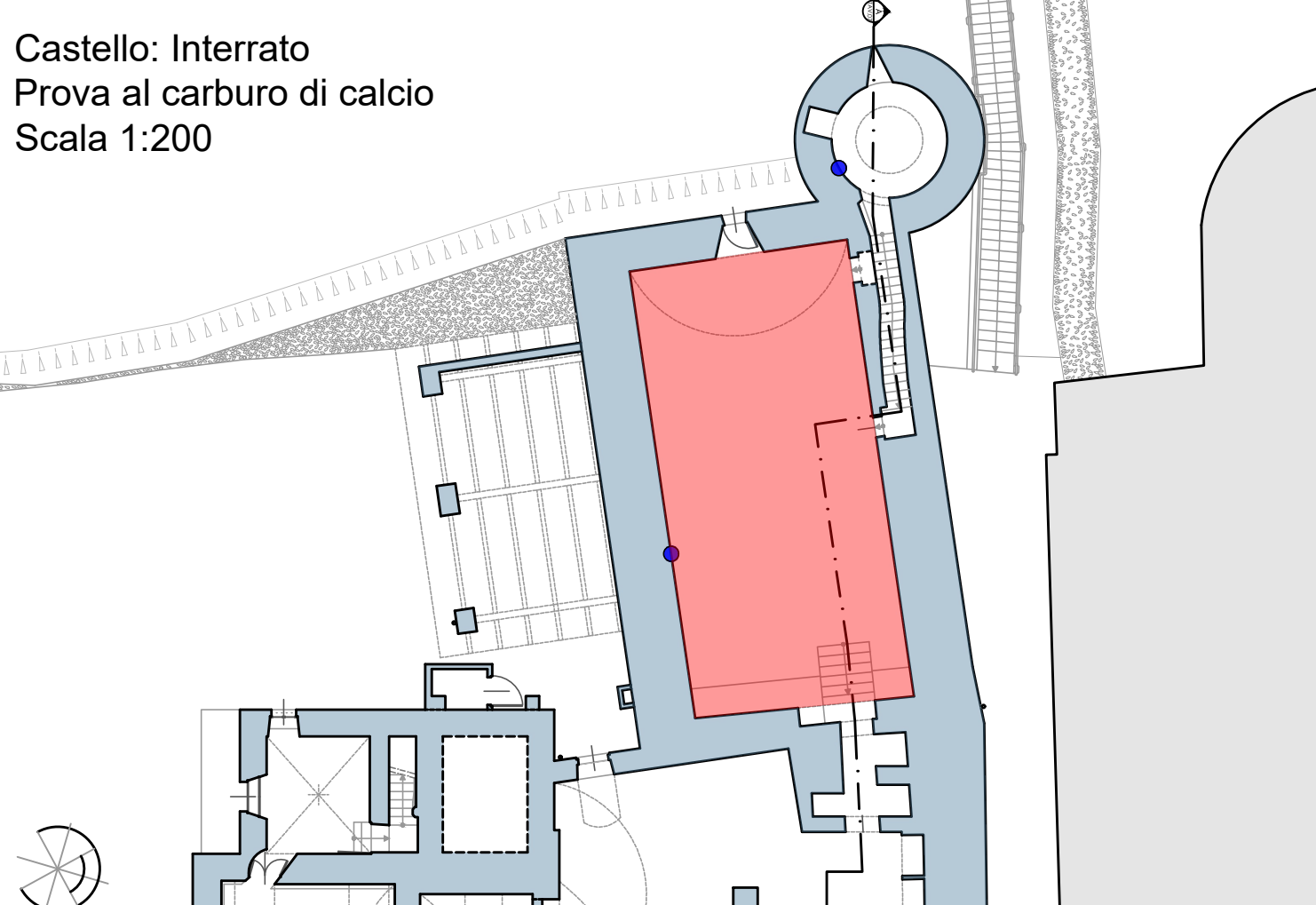
Sezione B-B'



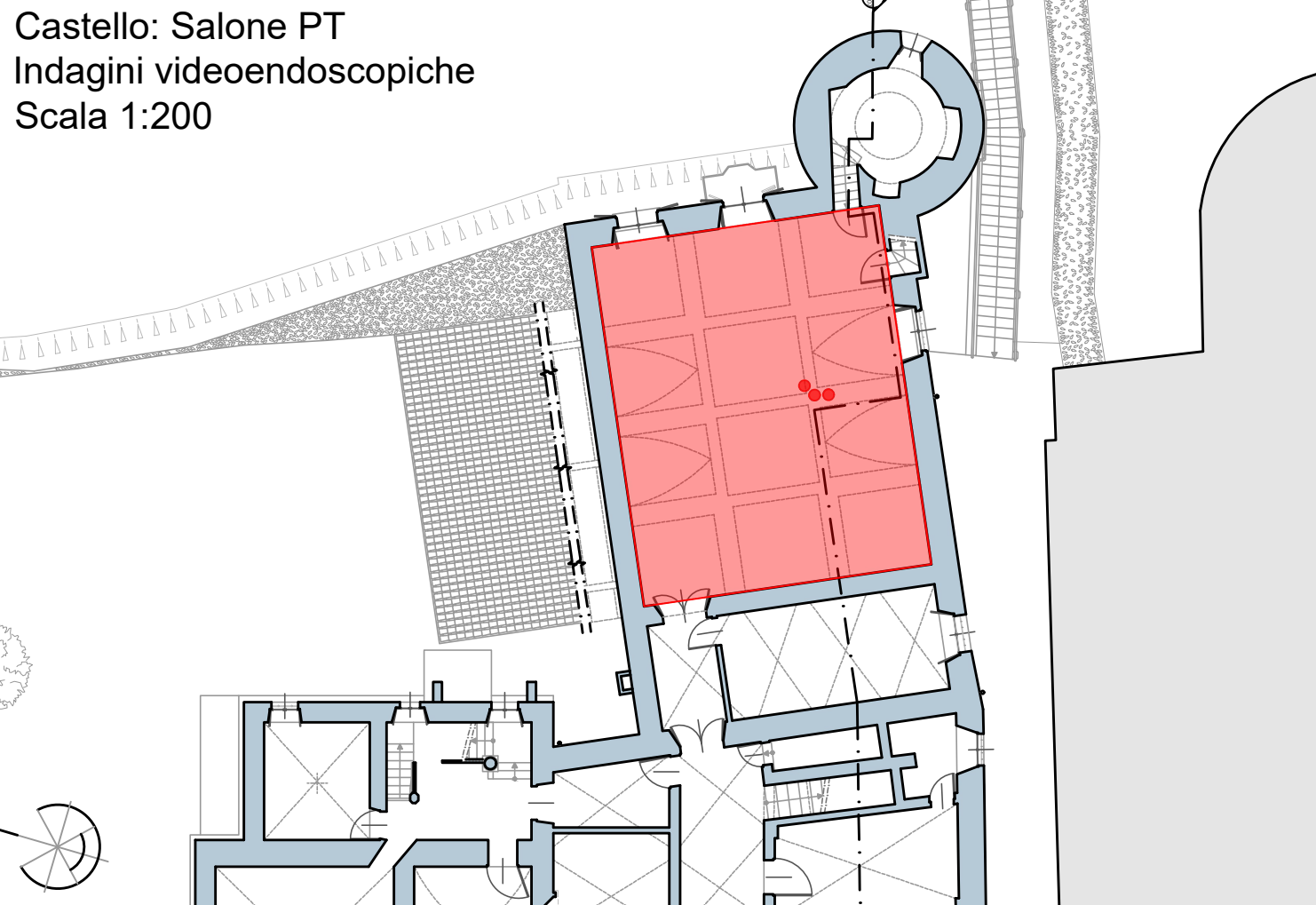
Cono ottico 2



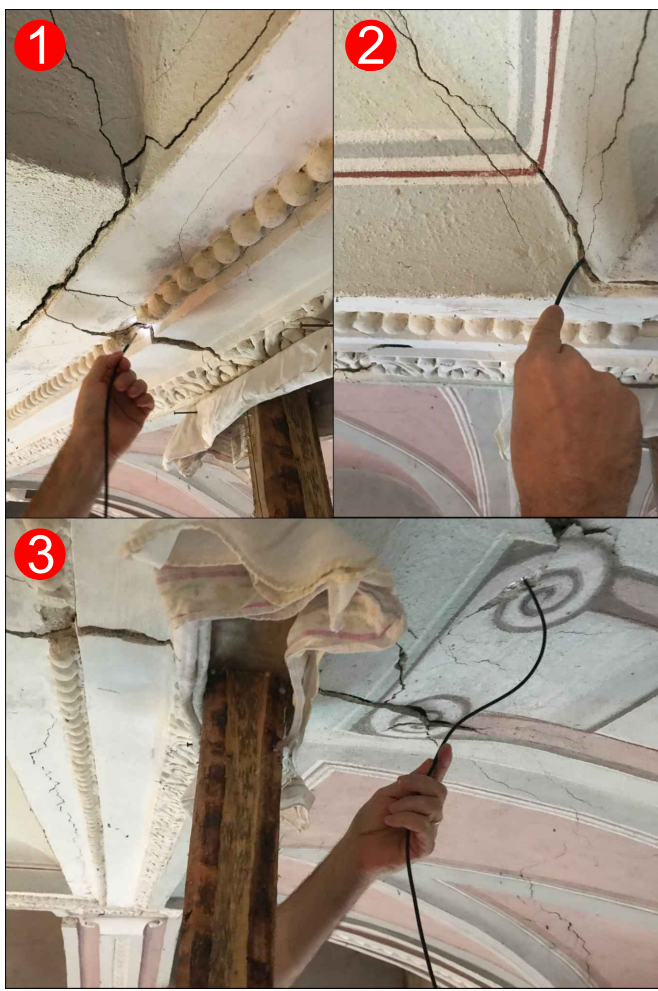
Castello: Interrato  
Prova al carburo di calcio  
Scala 1:200



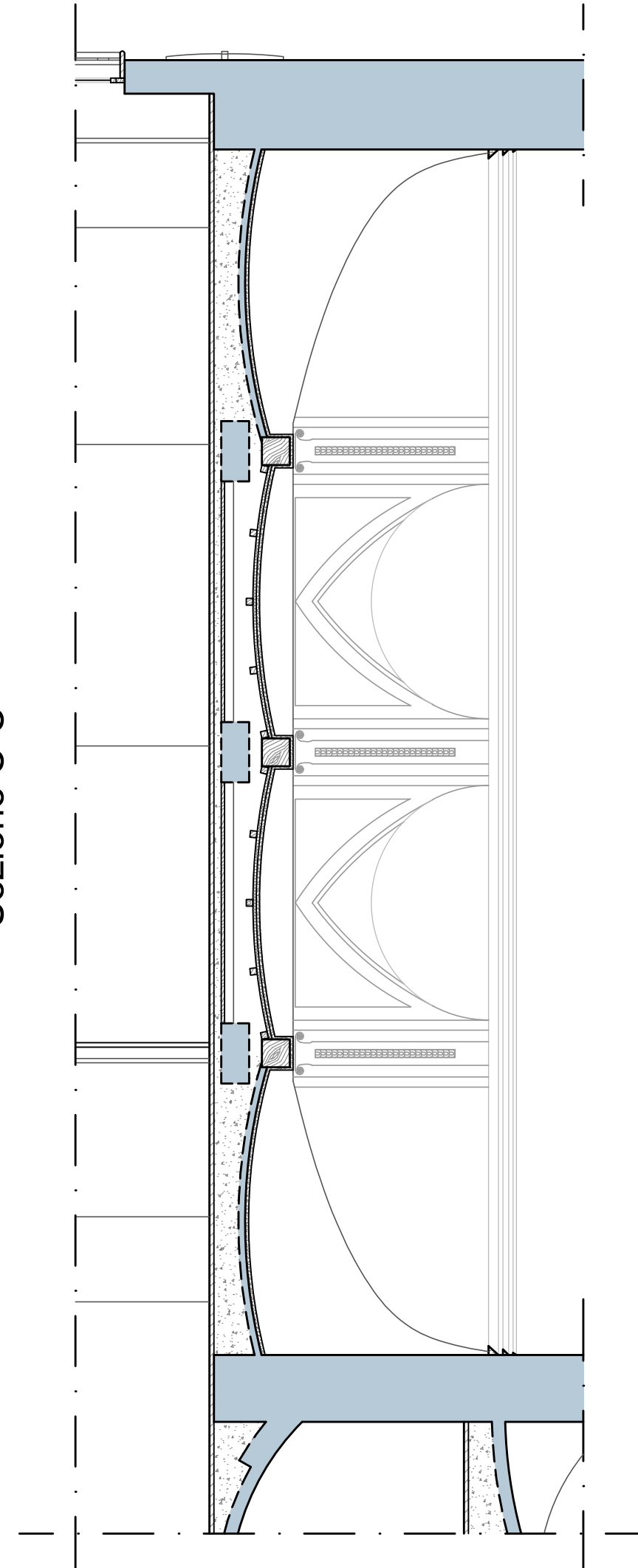
Castello: Salone PT  
Indagini videoendoscopiche  
Scala 1:200



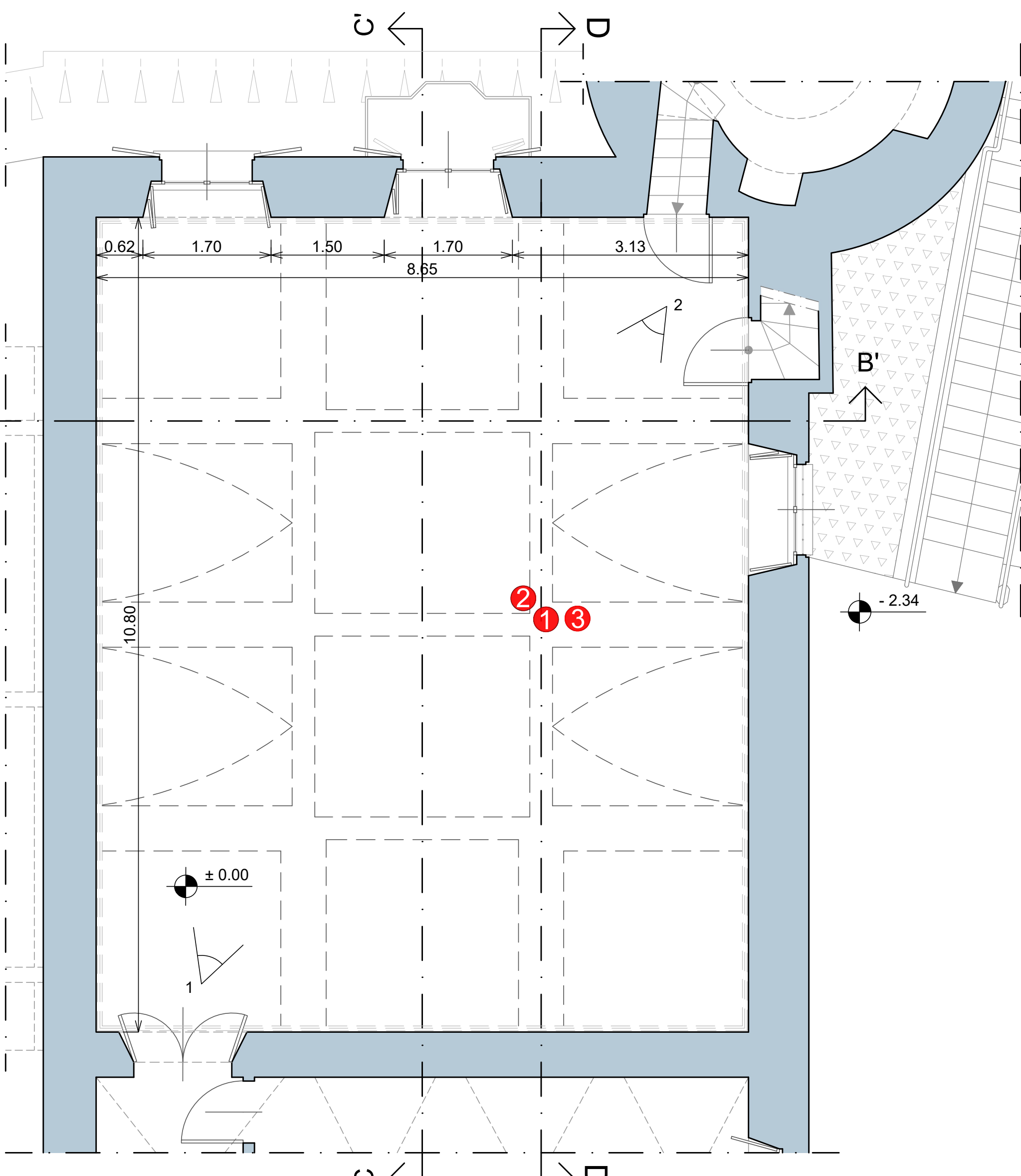
Punti di indagine videoendoscopica



Sezione C-C'

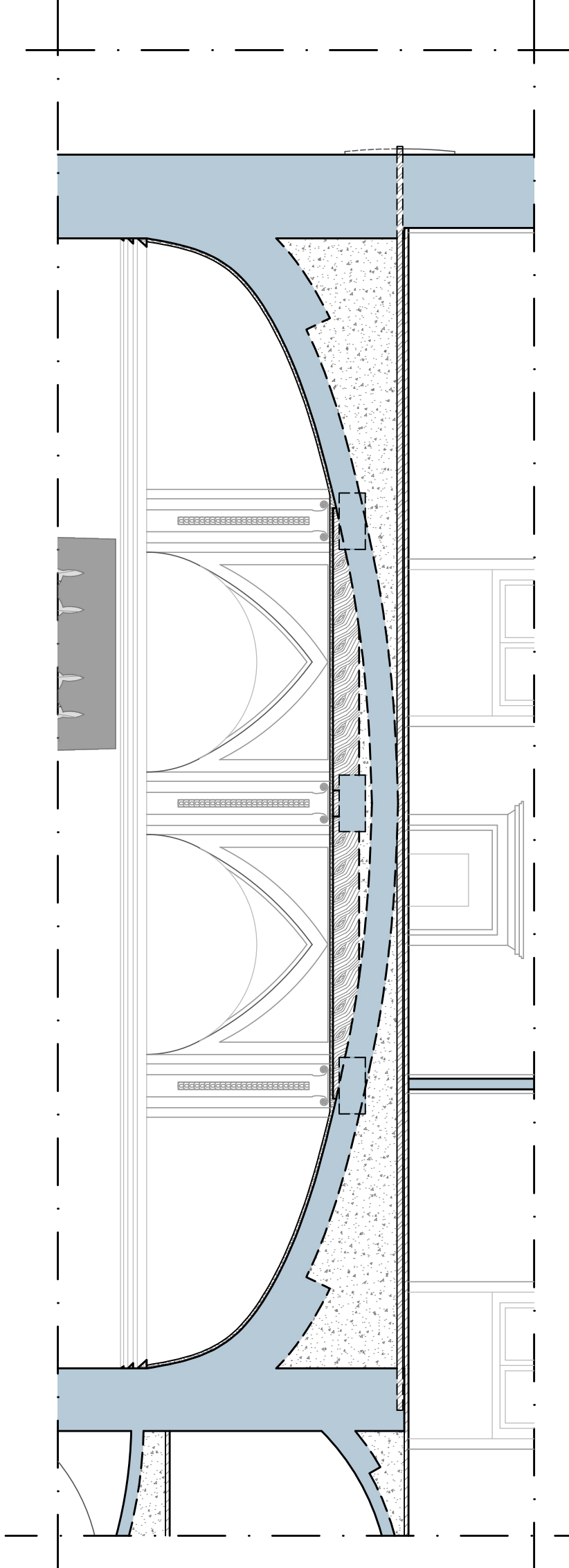


B



B'

Sezione D-D'



**POLITECNICO DI TORINO**  
Corso di Laurea Magistrale in Ingegneria Edile  
A.A. 2018/2019

**Tesi di Laurea Magistrale**  
**Il castello di Calosso.**  
**Studi e indagini finalizzati alla conoscenza di problemi conservativi**

Relatore:  
Prof. Arch. Marco Zerbinatti  
Correlatore:  
Ing. Alessandro Grazzini

Candidato:  
Domenico Leogrande

