



POLITECNICO
DI TORINO

Honors thesis

COURSE OF MASTER'S DEGREE IN ARCHITECTURE
CONSTRUCTION CITY

Abstract

**SchOOl: project for a temporary school in emergency
contexts.**

Tutor

Lorena Alessio

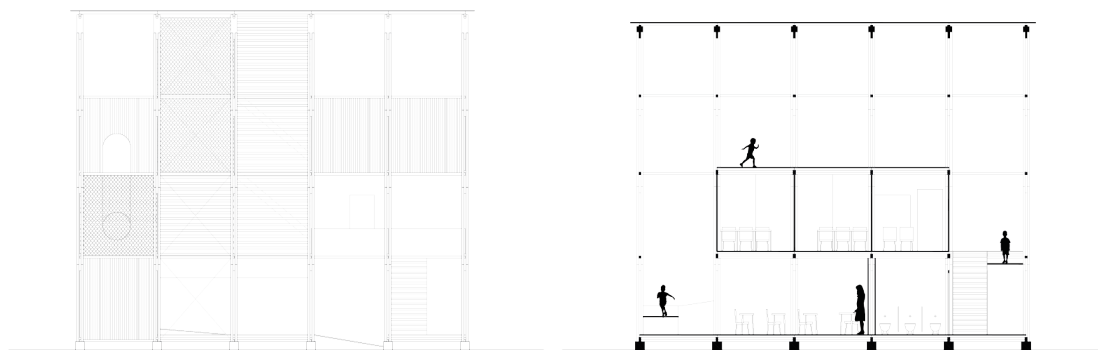
by

Simone Vacca D'Avino

July 2017

This thesis is the result of whole experiences that allowed me to develop in depth the matter concerning to the emergency architecture. Today we talk about social architecture as an answer to different types of emergency and at the same time as recovery of existing urban blocks.

In this research I wanted to analyze architecture in poor and war contexts since a project , in these situations, necessarily follows some processes of simplification related to energetic and environmental efficiency in addition to the use of structures feasible in rapid times and with easy finding materials. In particular, the intention has been to offer some spaces that can help to prevent the interruption of the education, event that may happens in case of emergency. The aim of the work is the study of a solution for a temporary educational space to insert in different sceneries struck by emergency events; this determined the ideation of a adaptable and transformable concept for different climatic and cultural contexts. During the ideation process i have deepened a series of topics in order to define the principal difficulties that usually occur in a situation of emergency and at the same time analyzing possible solutions that have been used in this type of situations. Furthermore , intentioned to make the project sustainable in different circles, i chose four key words that allowed me to define the general criteria of the project: the adaptability, the identity, the feasibility and the transportability. Based on these intentions, I tried to establish the dimensions of a basic module through the use of a single structural solution (usable both as vertical or horizontal element). The technological research focused on the study of a solution that allowed the correct compromise between the quality of the product and the cost of production. To such intention the choice has been the adoption of a classic element of the wood production: the fillet. The use of the fillet as main element of the project defined a series of rules in the phase of construction of the single elements and then in that of the assemblage. In the detail, the proposed solution defines a constructive frame of 2,5 for 2,5 meters composed by linear beam and pillar elements. To simplify this system and to prevent the presence in the construction site of elements with different dimensions or functions, I chose to predispose the fillet for different solutions in order to use the same entity as horizontal element of plan when the behavior of bending prevails, or as vertical element of level, as pillar, in the cases where to prevail is the behavior of compression.



The conceptual level SchOOl is an empty space destined to the different uses that a school can offer. In fact, although the regularity of the form, the project is thought to offer the possibility to experiment alternative spaces to the children. In the project i tried to combine the aspects of the pedagogy with the architecture so that to develop the child inside a space, understood as empty space, that will allow them to discover the endless possibilities to move inside a portion of world; therefore, the intention is to offer the possibility to to the children to distract and forget the emergency that they are to face. The project defines a space safe that is able to inspire children to open the mind and to have an alternative vision of the world.

