
**International ideas competition for the city of Jyväskylä: sails and archs
between two surfaces of water**

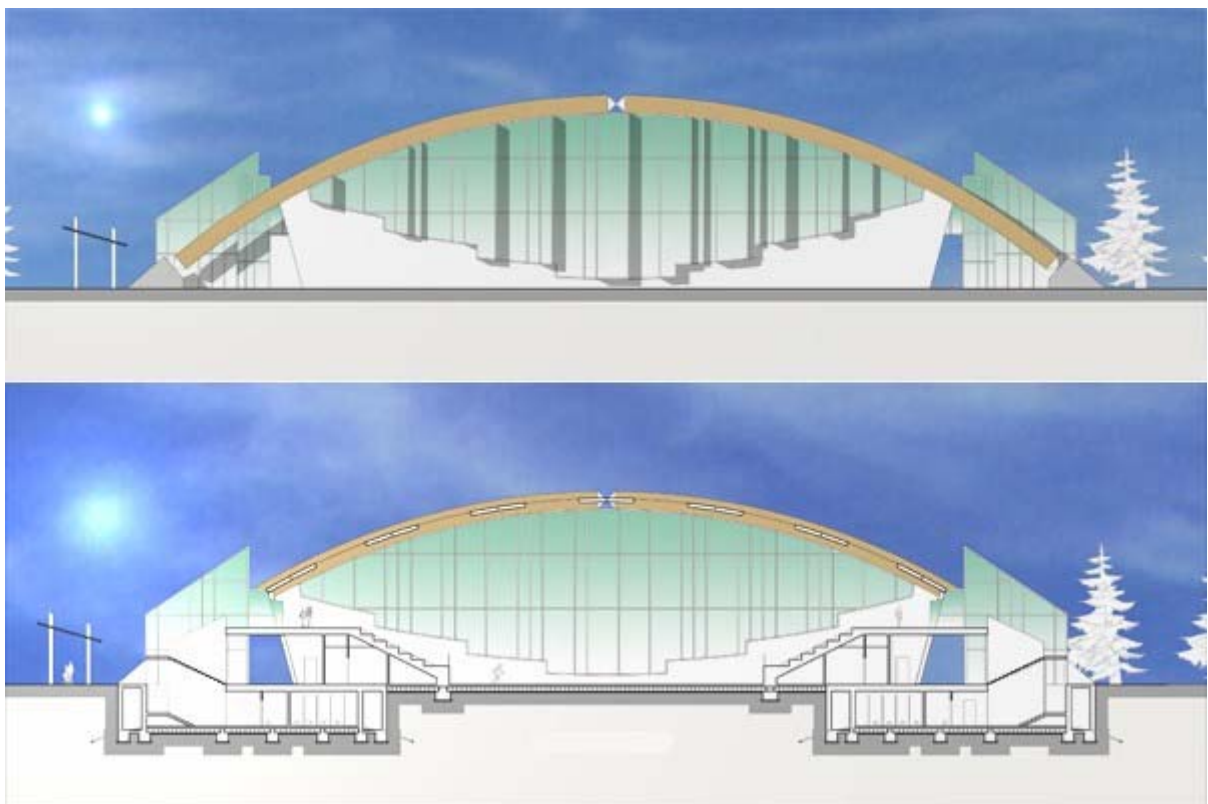
by Alessandro Ramondetti and Dario Roca

Tutor: Eleonora Bezzo

Co-tutor: Giacomo Donato

On the 28th July, 2006, in the city of Jyväskylä, in Finland, a “Pool of Ideas Competition” was held in connection with a building project on a strip of land located between the Tuomiojärvi and Palokkajärvi lakes.

All applicants were requested by the local authorities to draw up some projects to illustrate some possible suggestions for the building of a development on this particular area of the city. We therefore suggested the realisation of a shopping center and of a further sports center located in the Eastern side of the area; as to the Western side, we chose to keep its original country features, being prosperous and rich in secular spruces that make it possible for the flying squirrel to survive (the flying squirrel belongs to a preserved species which, up to now, has been seen only in Finland, Estonia and in Latvia).

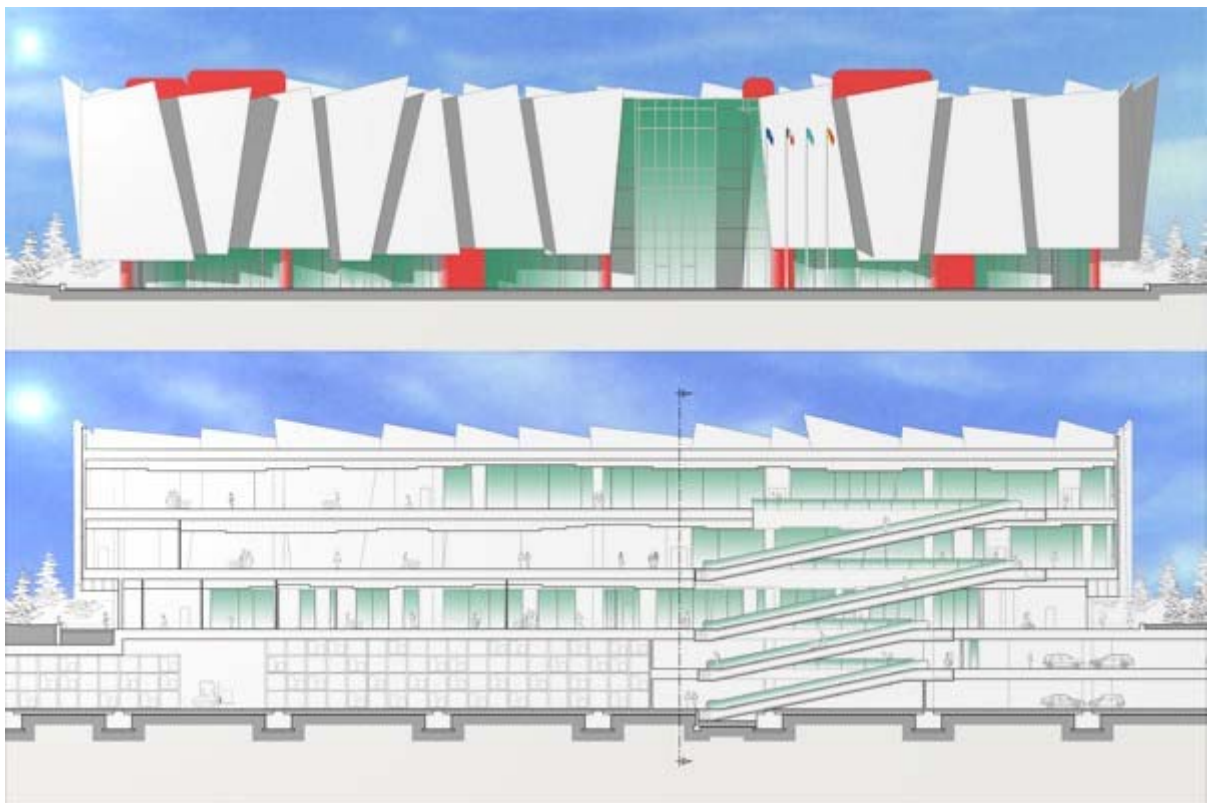


Prospect and side of the Sports center building

The Finnish weather has had a great influence on our project as we had to keep into consideration the use of proper materials that could survive low temperatures (under 0°C), in particular way in Jyväskylä where the temperature can go down to -15°C or even -20°C.

Taking into consideration this particular aspect of the Country, we chose to carry out the drawing of a project of a covered sport center so as to allow people to play also during winter when the cold weather makes it difficult to practice sports games. After a thorough consideration of the Finnish habits, we decided that the sports center could be the starting point for playing winter games such as: ice-skating on the lakes and the excursions on the snow, being the most loved sports by the Northern European people.

In order to attract people to this part of the town, we thought that the idea of building a shopping center annexed to the sports center would be appealing to more people and not only to those keen on sports games.



Prospect and Side of the shopping center

The connection between these two buildings has been made possible by the construction of a shelter starting from the main hall of the shopping center and going through the sports center up to the Tuomiojärvi Lake.

Additionally, we planned one more link between the two buildings, and precisely an underground parking positioned exactly in the area between the two centers so as to be used by both sports people and shopping center customers; furthermore, the underground parking will avoid snow inconveniences, which are quite frequent in Finland where it snows most of the winter.



General planimetry

The two compounds are different in shape: they show two different styles. The sports center is delineated by essential structures which have a very clear form that merges into the background without causing a big environmental impact. We have underlined this shape by the use of a line-bending section at a wide ray which starts from the ground, runs up quickly and finally comes down smoothly. The shopping center instead is characterised by net cuts produced by the use of vertical, asymmetrical and oblique shutters.

For further information, e-mail:
Alessandro Ramondetti: alekos82@libero.it
Dario Roca: darior82@libero.it