

POLYTECHNIC OF TORINO
FACULTY OF ARCHITECTURE 2
Degree in Architecture
Honors theses

Waterford North Quays- The Venue Building- Auditorium

by Luca Luddeni

Tutor: Roberto Apostolo

Especially in Turin, the great industrial areas discharged topic is actual and complex.

Cities' Portions transformations shouldn't be, as often in our city, just an occasion for the inconsiderate space exploitation and the spread of building exclusively linked to economic fines. Otherwise, architecture should deal/handle with these new city spaces and trying to turn them into places for social and public activities where people could identified themselves.

An international competition in Ireland is become the occasion for this thesis development. The thesis plan is to answer the demands for the requalification competition of a harbour area discharged on the docks North of the Suir river in Waterford. Thanks

to the European Community financing it has already been carried out a South docks requalification. The Administration objective was to realize over this area a participation that could give a new face to the city. To make it happen it has been called for a planning of a Auditorium from 1200 places and a Master Plan of a part of the lottery in which the future realization of 3 residential towers had to be studied and for offices. The Venue

Building, as the Auditorium is named, beyond granting the classic relative functions to music, might become a temporary expositive room and a meeting room.

The chosen relative plan, approached to the study of the vehicol and pedestrian flows of the next zones to the lottery, has carried to a process of dynamics metamorphosis of the shape. It has been transformed every flow to a force and attributed to everyone a different weight based on own characteristics, to understand how these values could modify the shape.

The result has been the creation of a dynamic architecture where the flows generate the shape, the function adapts to the shape and the shape changes itself to satisfy the real planning requirements.

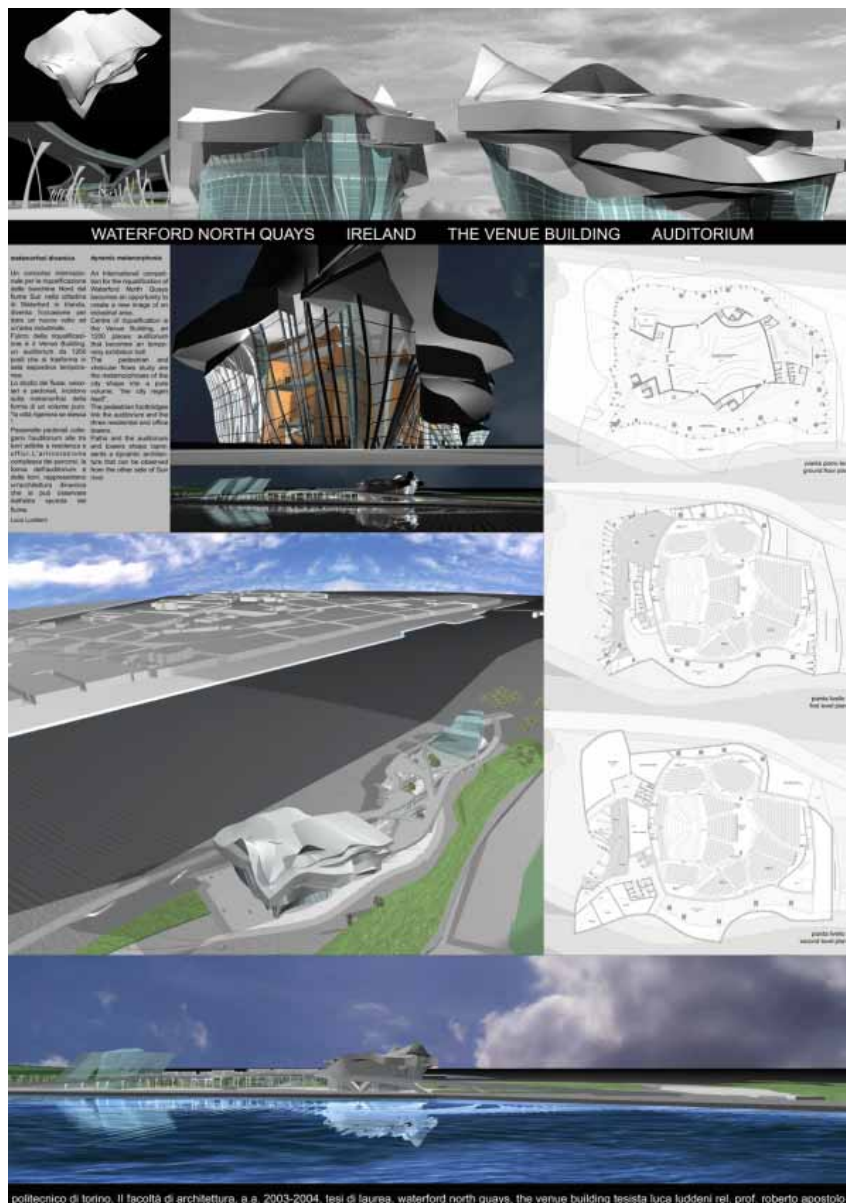
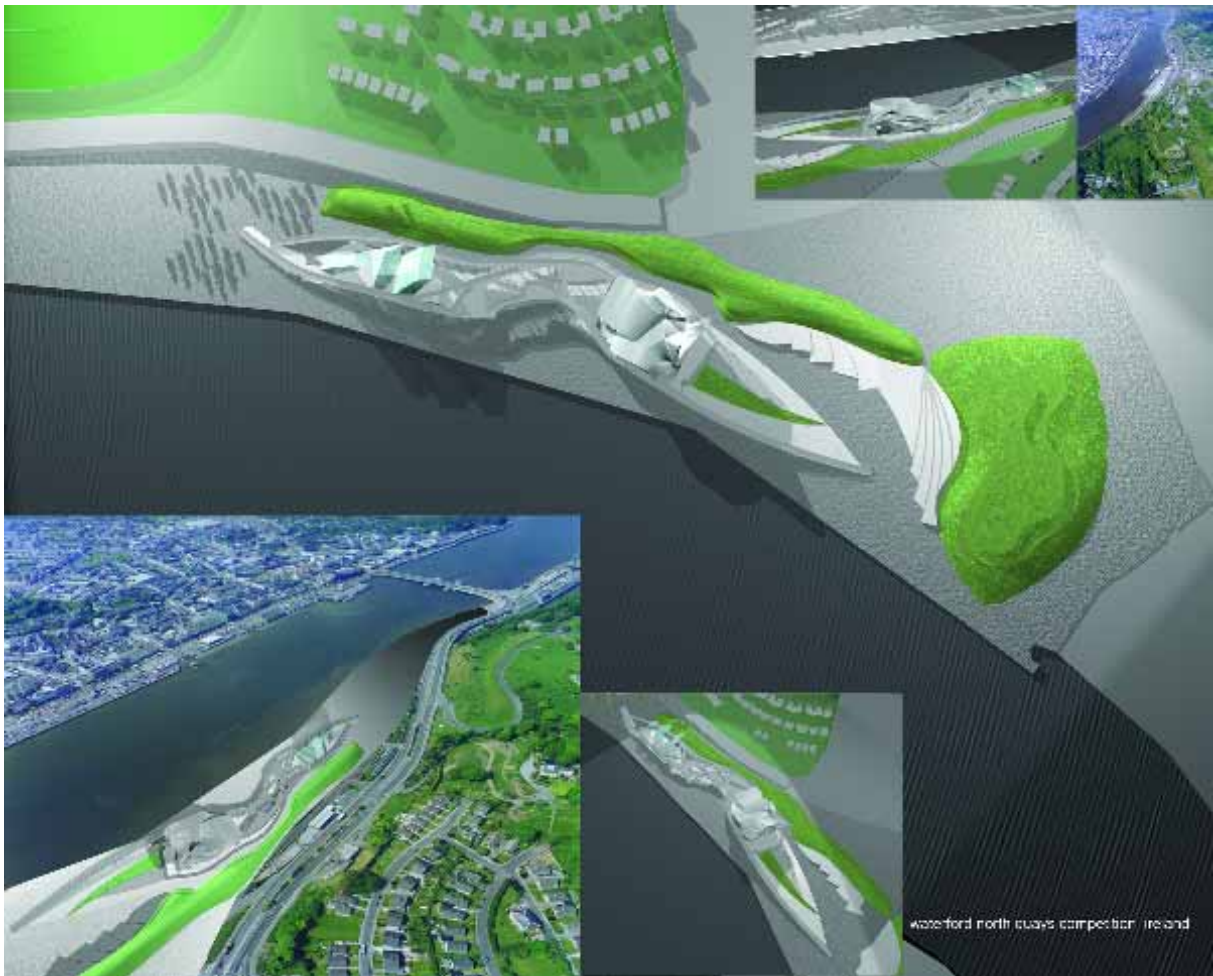


Table exposed to “La Biennale di Architettura 2004 di Venezia”

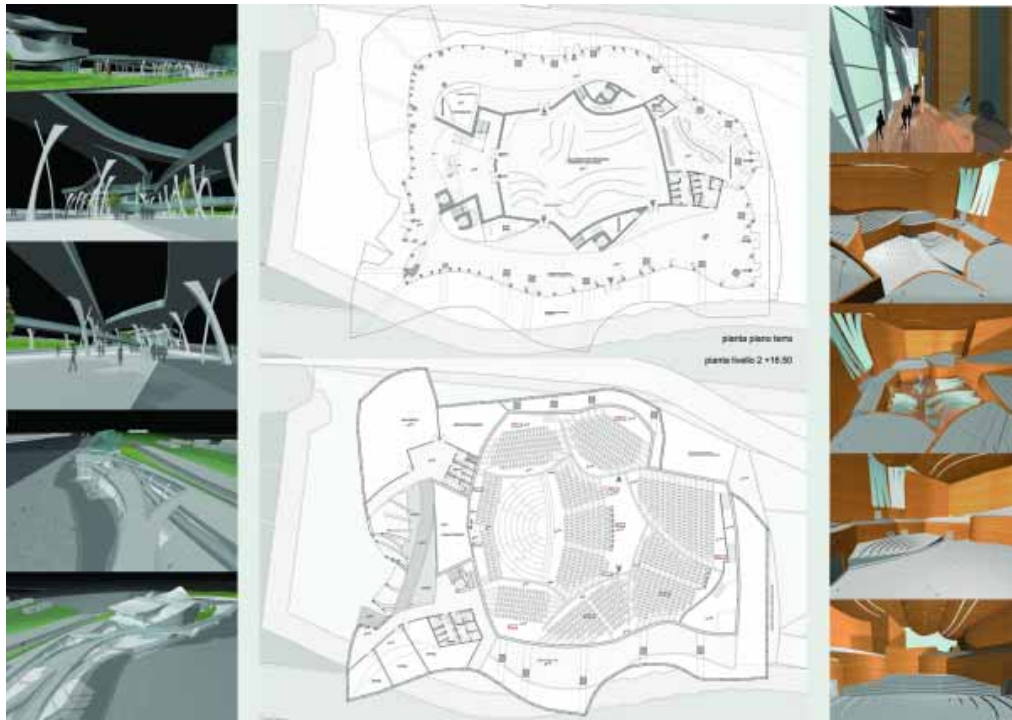
The 3 residential towers setting is born from the study of the influence of the flows on the whole lottery. The towers are linked to the auditorium through pedestrian footbridges that connect the 4 buildings creating a distance of approximately 400 meters. These distances you mail to different quotas, are interrupted from sopraelevate public squares that allow living the fascination of the sight that can be enjoyed watching the city Waterford, with the historical nucleus on the river south of the river.



Complex in the contest

The building of the auditorium consists of one structure in steel and reinforced concrete with an outer coat in rhinzink. Large glass structural supported from supports in steel close the building. The full or opaque part of the building, realized in rhinzink, represents the architecture generated from the flows while that transparent one wants to be a connection directed with the outside from which the flows can be perceived generate to you from the inner life of the auditorium. A part of the tribunes is mobile and is formed from terrace in metallic structure supported gives of the hydraulic rams that allow the vertical movement and in such a way concur to create a flat zone to use as it as a displayed temporary. The use of the double covering separates the functions: the inner covering contains knows it musical, the tribunes and the services, that outside the vertical and horizontal connections, the foyer, the offices and the restaurant.

The ground floor is conceived as a living place all day. In fact there are a restaurant, a book shop, a tourist information centre and a temporary expositive room .



Ground and first level plan, on the right pedestrian footbridges, on the left the inside of the auditorium

The city gets itself together through its movements dynamic creating therefore a new architecture linked to the context and to the whole city agglomerate.

For further information, e-mail:
Luca Luddeni: naxos54@yahoo.it