

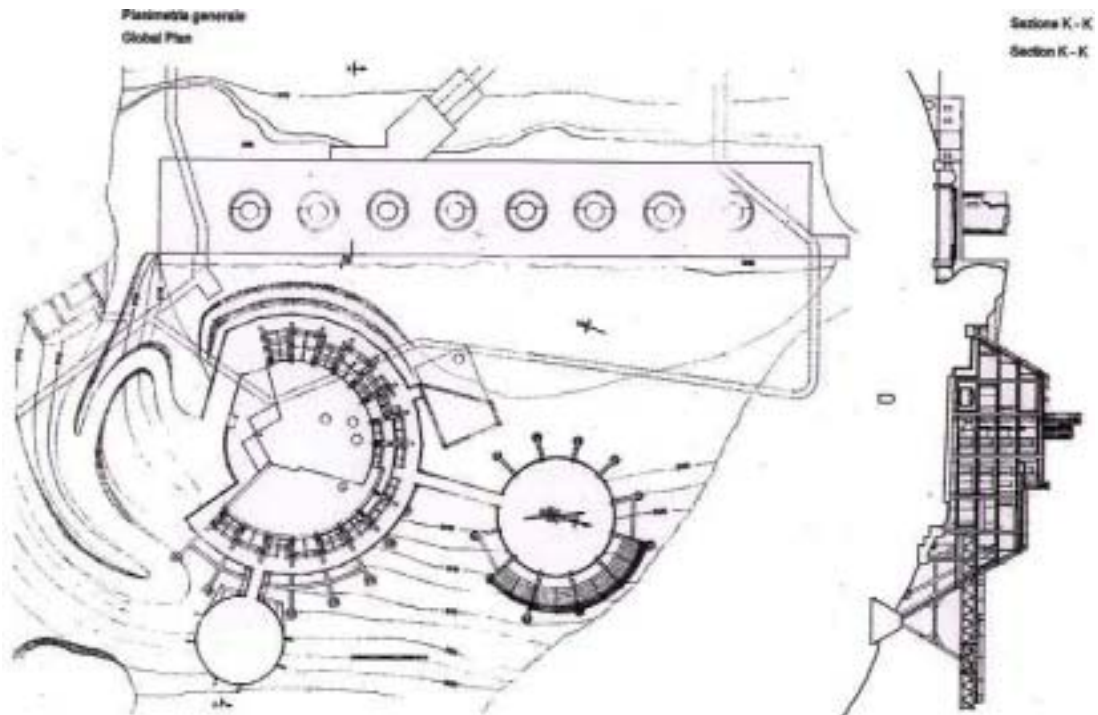
Attestation on the Chaberton for tourism

by Roberto Cantino

Tutor : Giacomo Donato

Description of the plan

Place: summit of the Chaberton Mounth, in french territory. The plan of develops at the back of the fort of the Chaberton on the large square, toward Briancon; the level 0,00 of plan, correspondent to the superior surface of the insole of the ground floor, one tax to elevation 3125 m. s.l.m..



Global Plan

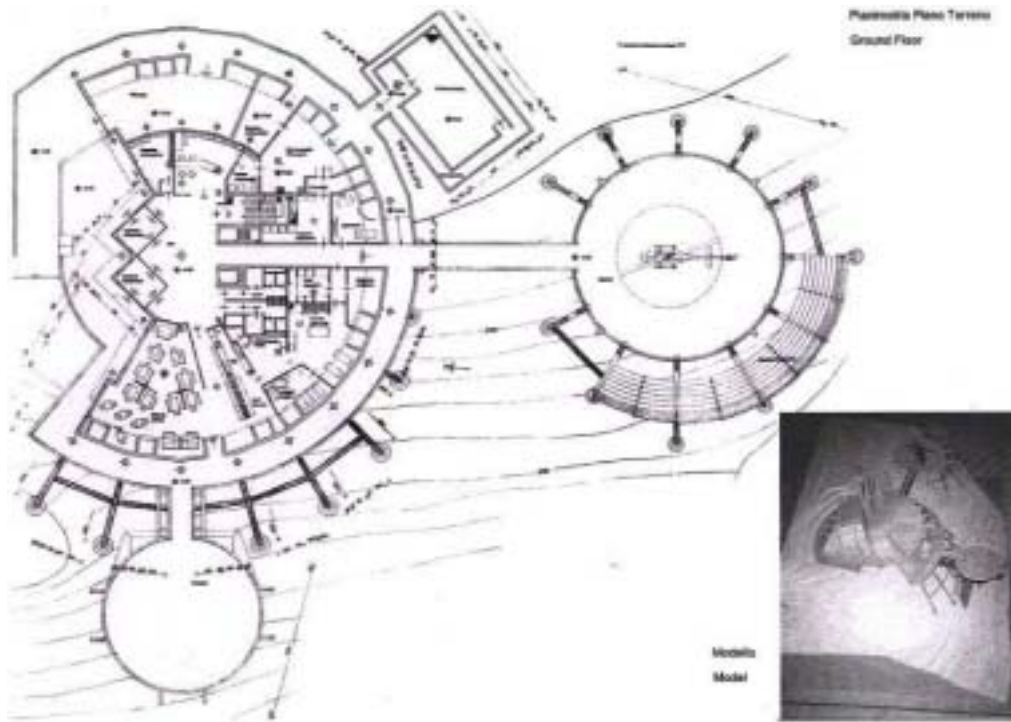
The theme of the research consist of a receptive structure that much draws near to the typology of the shelters - hotels, that has the purpose of furnish a sure point of reference to the many tourists that they in each season arrive at on the summit of the Chaberton Mounth. These persons, that could be mountain climber, ski - mountain

climber, excursionists and as by, they could have the demand of consume a hot meal, or to stay overnight for take back in the following day.

The plan notes of this and of many other makers, like, to example, the abhorrent met conditions that could audit at 3130 m. s.l.m.; in such optics has been decided the complete structure, both from the point of sight of composition and structural. The conformation of the external envelopment must be such to guarantee a least seizure of the wind and of the snow; for this motive on been selected a trunk - conical form, whose segment lacking form, in the north part, a snug zone of entry. The carrying columns have founded, in the east slope, on backwards disposed beams in radial design, while on the slope west has founded on cylindrical connected plinths connected them from a backwards beam with scaled base. This solution has the purpose of bar the tendency to the sliding toward dale of the same plinths in effective way. The almost totality of the carrying elements is of prefabricated type, in way that can been carried on the summit by transport's helicopters; any street doesn't exist that's practicable for motored means. The slabs are realised by means of insoles in armed concrete and greek iron sheet, supported on a loom in radial design constituted of a couples of steel beams HEB 300; the external closing, titled of 30° respected to the upright, they're corporate by panels sandwich of concrete conglomerated with layer thermal insulating to the inland, fixed by means of bolts on fitting perimetrical currents. All the inside partitions, to exception of those with resistance to the fire, are of light type, realized with couples of panels in fire resistance material and layer of phonoabsorber material to the inland. The floorings are of raised type, then detachable for finish the handing of the fittings, while the ceilings are gifted with innerceiling.

The adoption of these solutions, beyond that be speedy in appreciable manner the transport's operations and mass in opera, they guarantee an elevated flexibility of the surrounding, in case, in future, they must be bring modifications or changes.

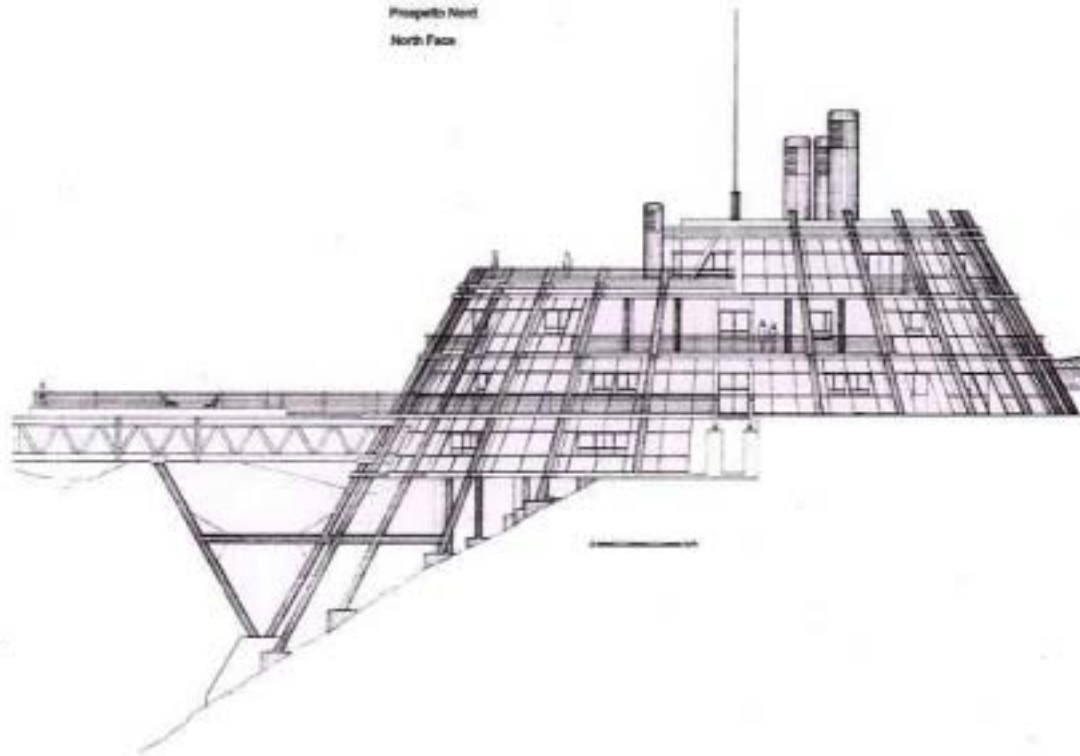
A circuit of heated serpentine cross all the plain feasible surfaces and it stretches for all the height of facades, in way to prevent the formation and the accumulation of snow and ice during the winter season.



Ground Floor

The functions entertain to the inland of the building are the followings:

- *ground floor*: hall, reception, equipment's depose, motor-sleight's box, electrical generator group's local, fuel's deposit for electrical generator group, thermal central in separate place, restaurant self-service, cafe, kitchen hot dishes, kitchen cold dishes, washing pottery, cold store, box's buttery. Two extensions to south and to west of the structure are the heliport and the panoramic balcony respectively;
- *basement plain*: hall, expositive salon of the material relative to the history of the fort of Chaberton, file, place earth for the reservoir of the drinkable water from 8500 litres;
- *first plain*: hall, rooms for the guests, covered balcony;
- *second plain*: hall, rooms for the persons of service, administrative office, feasible balcony uncovered.



North Face

The rooms for guests are of varied measures, in matrimonial prevalence, but there are two with additional bed, one with three individual beds, and one with five individual beds; all the individual beds could be transformed in castle beds, in compatibility with the extension of the room. The furnishing and the disposition of the inside partitions have been situated to exploit the space in the better possible way: each room is gifted of bathroom with shower and of a small external terrace, projected in way to no jut out from the surface of facade.