

**Abaco - an exhibition system**

by Stefania Quaranta e Silvia Raule

Tutor: Marco Vaudetti

Nowadays the preparation of permanent and temporary exhibitions, is dominated by the use of expressly made and hand made structures. Given the objects to show and the place where they are to be shown, their containers are planned and constructed.

The aim of the present study is double. First, to obtain a stand starting from an industrial piece of furniture, therefore connecting the sectors of furniture and exhibitions. Second, to propose a system for temporary shows, potentially suitable for any object and place. On these bases, the product we developed is:

- cheap, because it is made with a going industrial production
- versatile, thanks to its modular and sectional structure
- ecological, for its materials and for the attitude it suggests (recyclable versus disposable).

The study moved from the analysis of exhibit contexts (show and museum), trying to understand and compare their main features. The work continued with the research of more specific subjects like needs, requirements and performances regarding public, objects and the exhibition system.

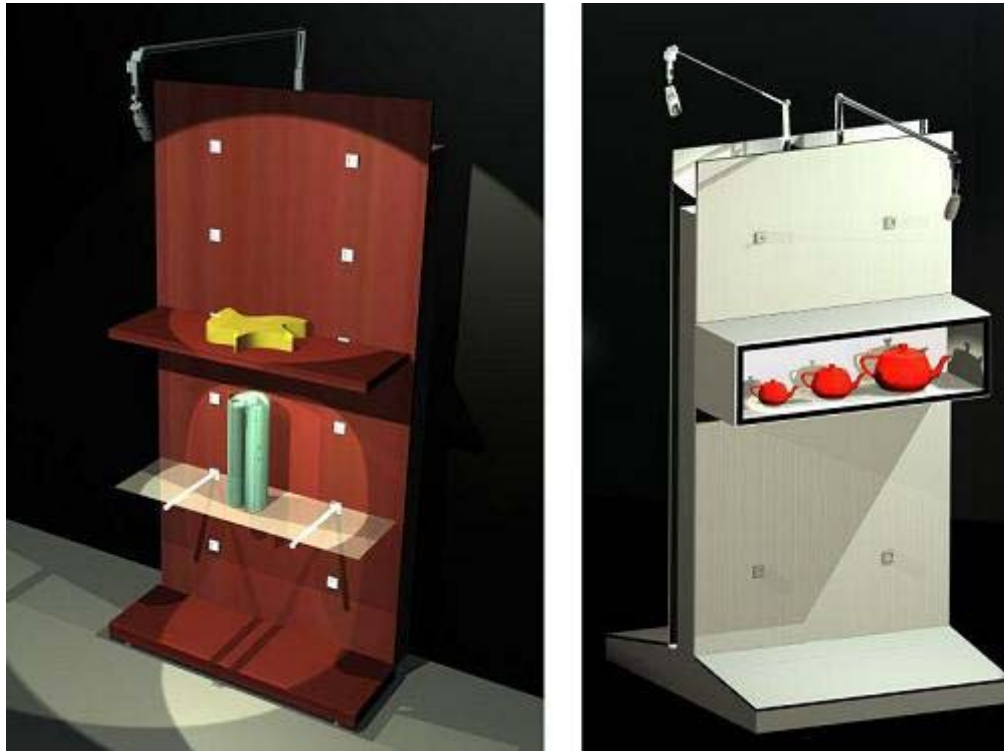
We also examined the current legislative frame and pointed out its bonds and restrictions regarding this matter.

The study was conducted with the collaboration of Tisettanta (a company now engaged in the sector of furniture and willing to enter the exhibition one), which shared with us its know-how.

The knowledge of the factory production was absolutely necessary in order to understand what to modify and how.

We considered the parameters of the microenvironment inside the stands and we chose the most effective technological equipment.

The research on materials supplemented alveolar plywood panels, steel and aluminum profiles, with a new wood shaving panel: the Pannelo Ecologico, totally made up of recycled and recyclable wood.



**photo 1** - abacoWall finishing: laminated cocoa cherry-wood; abacoDuo finishing: varnishing white silk

The definitive project proposes Abaco, the exhibition system. As the name suggests, it is composed by an abacus of sectional components. Abaco includes four structures which are essential for a temporary exhibition. **abacoWall** and **abacoDuo** are respectively the wallpanel and the isolated panel. Using a special fixing system is possible to increase the traditional ostensive way: not only can you hang or suspend objects but you can also lean or protect them.



photo 2 - **abacoBox** finishing: laminated cocoa cherry-wood

**abacoBox** allows to protect big objects while **abacoElevo** permits to elevate objects for their best vision.



photo 3 - **abacoElevo's** finishing: laminated natural cherry-wood

Abaco system is completed by **abacoStelo** series, which supplies informative support.

The economical analysis confirms the actual possibility of realizing the project with an industrial production, a competitive price and a high quality of materials.

For further information:

Stefania Quaranta , email: [stefaniaquaranta@tiscalinet.it](mailto:stefaniaquaranta@tiscalinet.it)

Silvia Raule , email: [silviaraule@katamail.com](mailto:silviaraule@katamail.com)