



**Politecnico  
di Torino**

## **Honors Thesis**

---

**Master's degree SYSTEMIC DESIGN**

**Abstract**

**PoliMoor:**

**A systemic map to navigate university complexity  
and catalyze disciplinary collaboration**

**Tutor/Correlator**

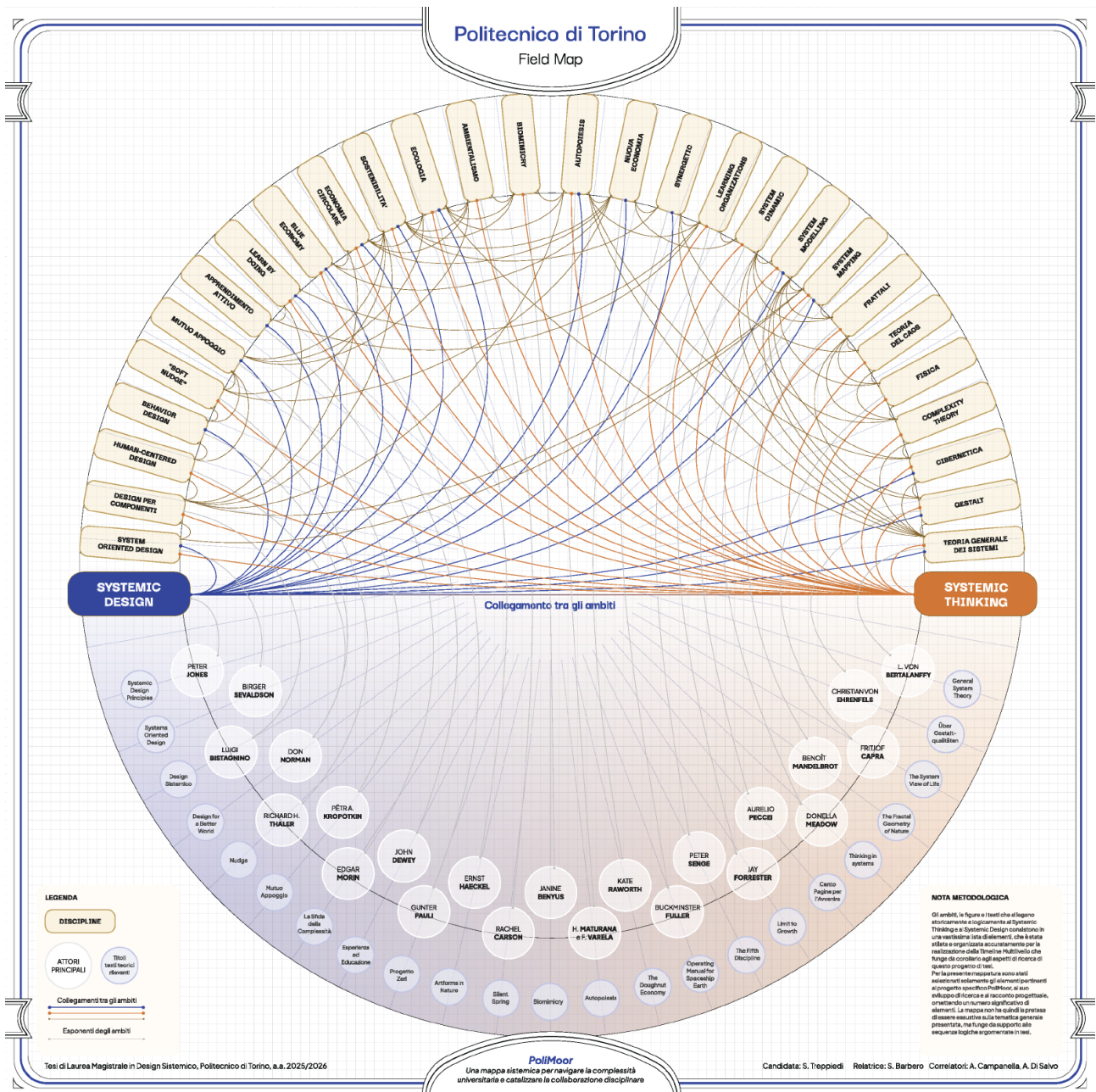
**Silvia Barbero  
Adrea Di Salvo  
Alessandro Campanella**

**Candidate**

**Serena Treppiedi**

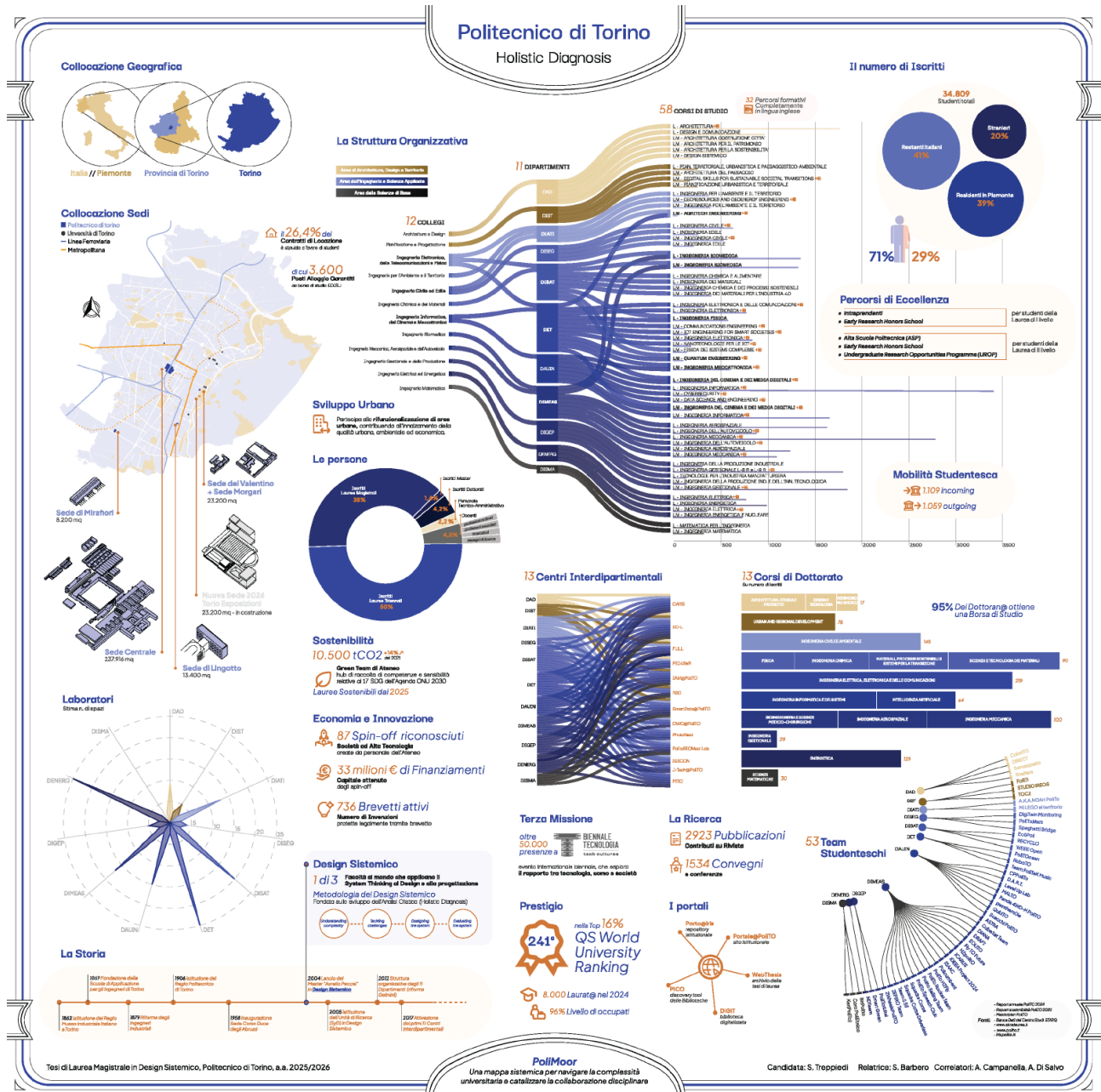
**December 2025**

In the interconnected world we live in today, we face complex challenges, social, political, technological and environmental, that cannot be understood or resolved through the analytical and linear thinking we have been educated to use. A shift is needed toward a systemic, holistic and multidisciplinary vision, one that cannot be transmitted from above but must be internalized through direct experience. To achieve this goal, it is essential to convey the conceptual framework of systemic thinking.



In order to provide an overview of all the factors that contributed to the development of this approach, maps of the interconnected disciplines and an interactive Multilevel Timeline were created. These tools offer an overall vision of these areas but are not sufficient to lead to a true paradigm shift as they do not actively involve the user.

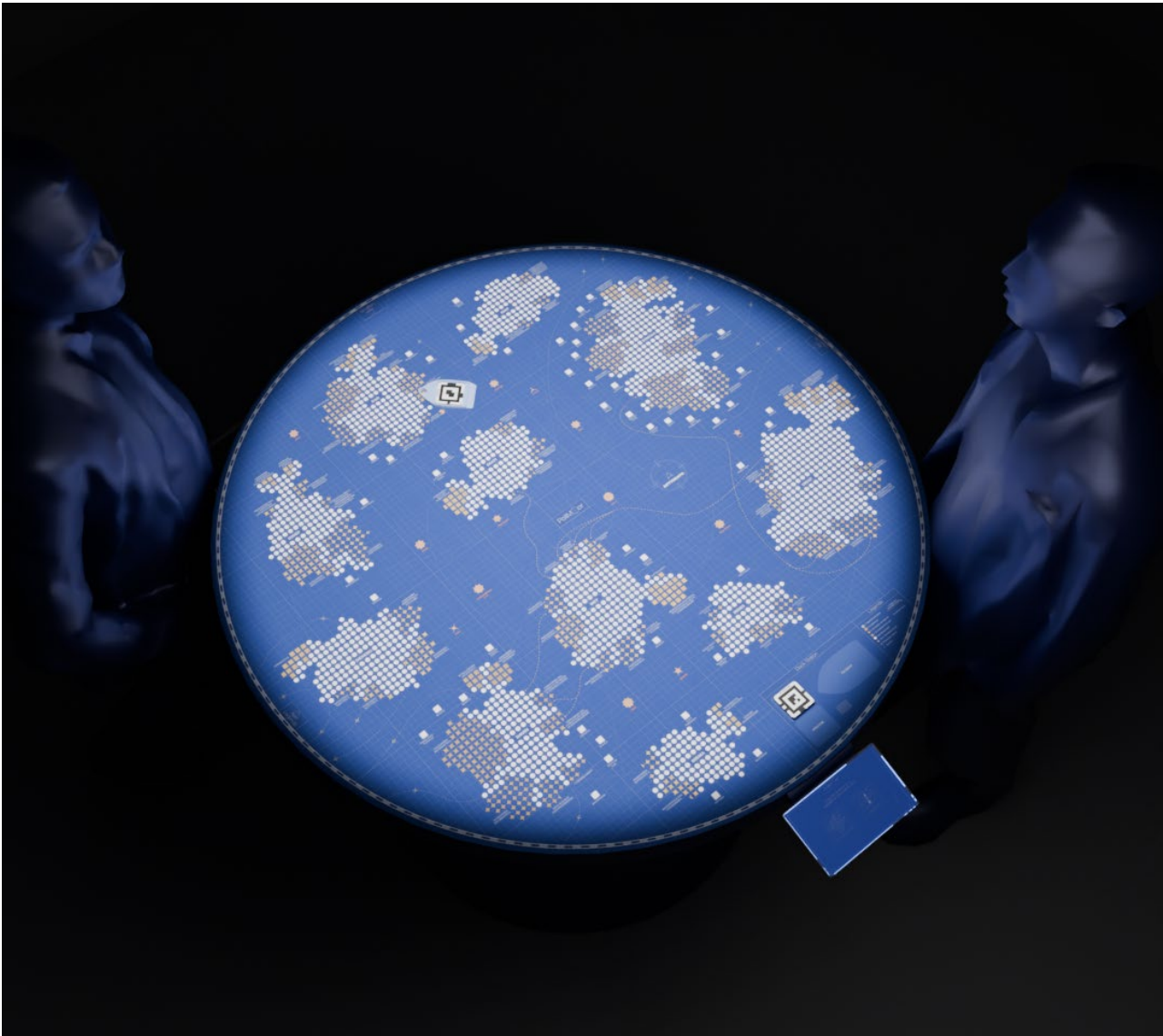
The Systemic Designer, who through specific tools and methodologies grafts the concepts of systems thinking onto shared design practices, becomes a figure of mediation and guidance across different competencies and domains. In systemic design practices, various actors and professionals can share their knowledge and skills to build shared value within a collaborative and interactive dimension.



The university, a place where the designers of future solutions are trained, is a clear example of a siloed system, rich in human resources and knowledge that often remain disconnected.

This is precisely why the university, and in particular the Politecnico di Torino, with its organization into Departments, is the ideal context for a project that, through an interactive experience, makes the potential of connections tangible and offers the academic community the opportunity to explore the value generated by new relationships between different competencies, through a systemic lens.

The project takes shape in PoliMoor, an interactive installation to be placed within the university itself, with students, faculty and researchers as its end users. At its centre lies a systemic map representing the organisation of the university's departments and the possible relationships among its components, represented through the metaphor of islands and navigation map. Through interaction with physical elements, users can activate connections and observe how these generate new configurations and opportunities.



The project places particular value on the presence of the Systemic Design degree programme, which becomes a catalyst and starting point for stimulating cross-pollination with STEM areas and other disciplines present in the university. In this way, the aim is to activate in users a new, integrated way of seeing the world, education and, not least, design itself.