

Abitare il suolo pubblico



Abitare l'esterno privato



Abitare il suolo privato



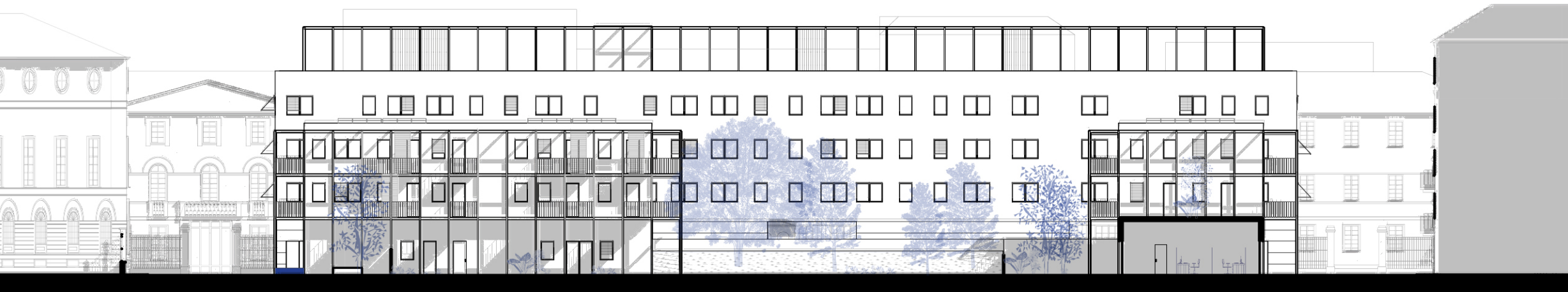
Abitare il suolo pubblico



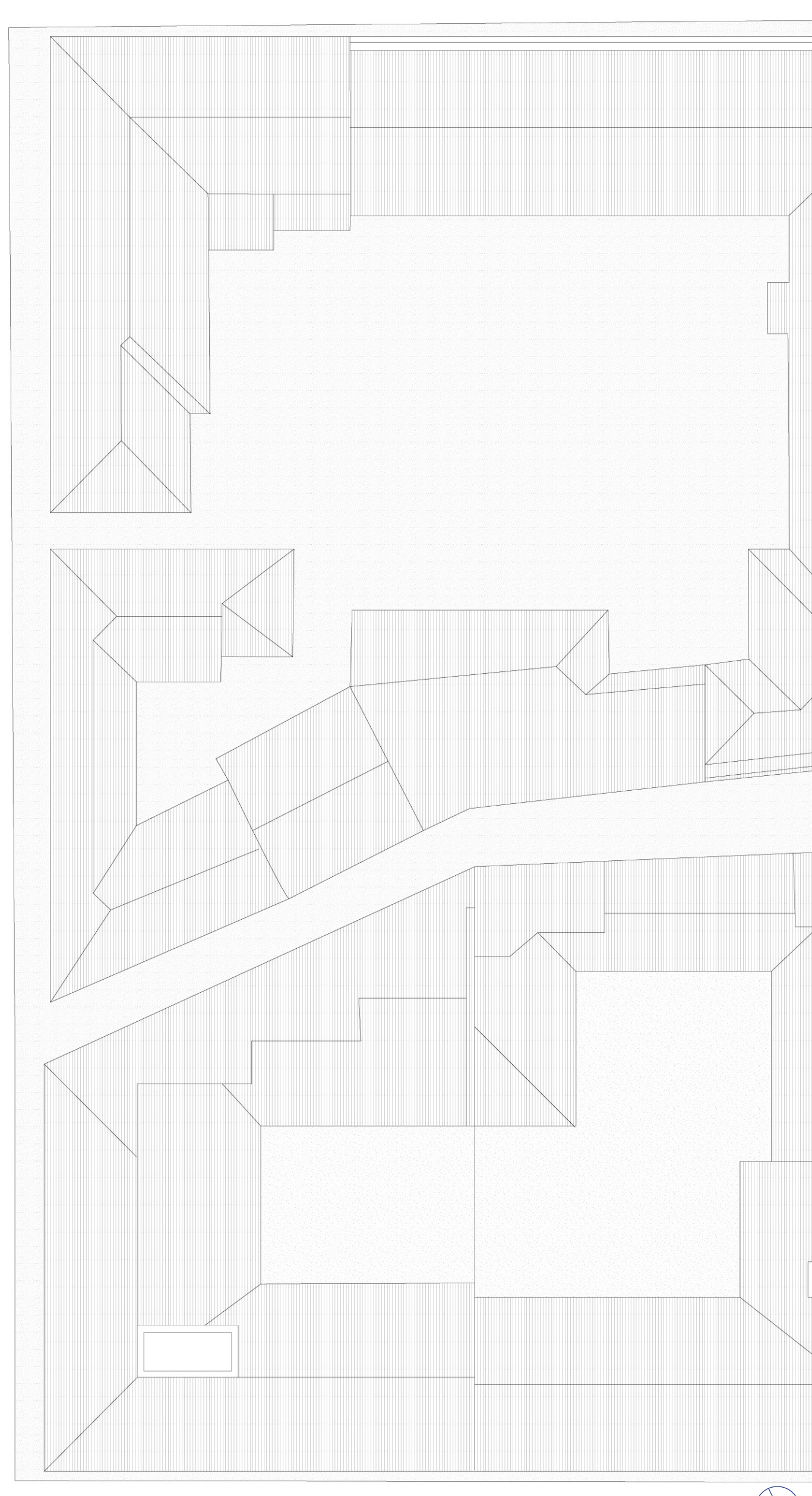
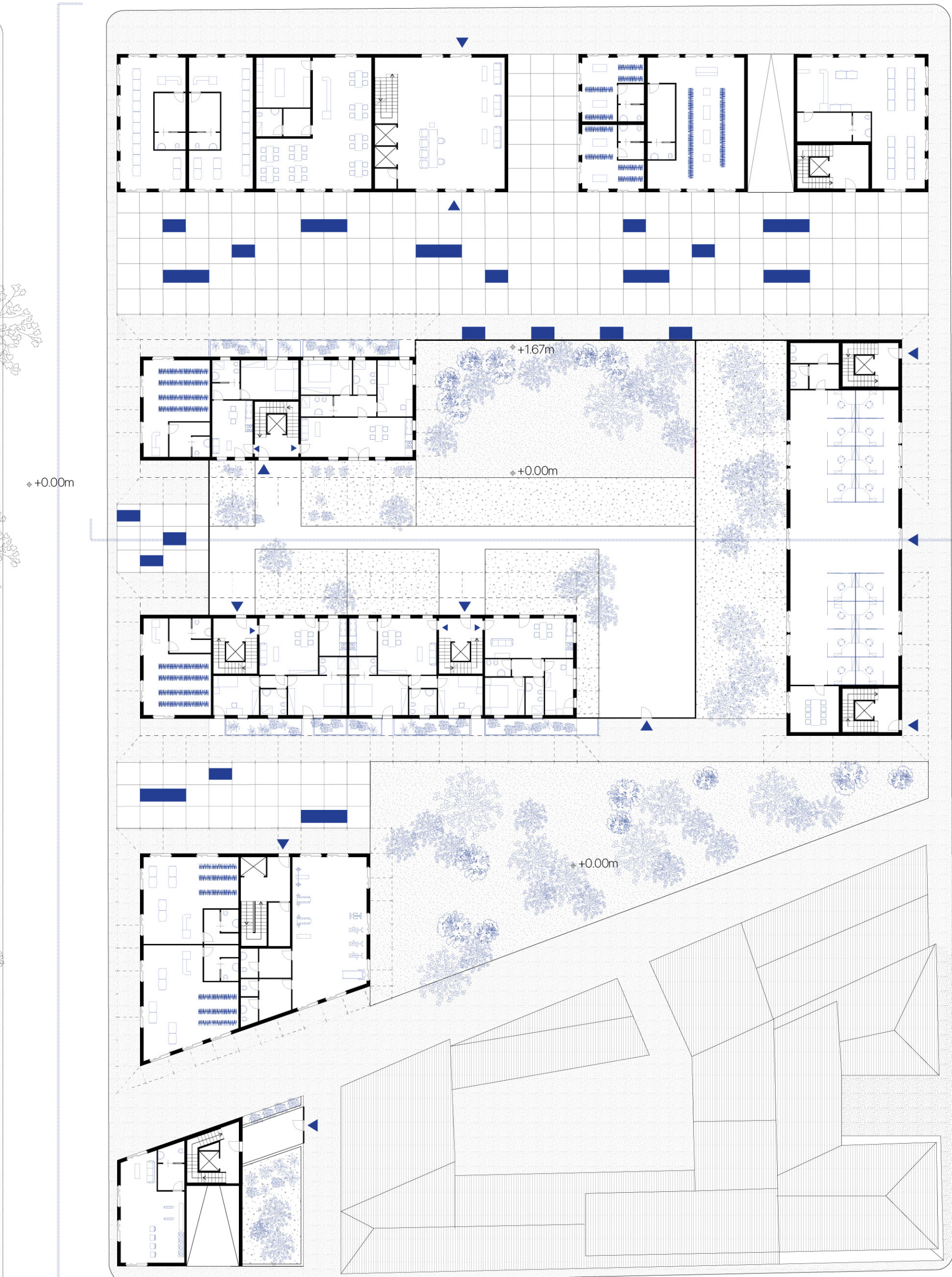
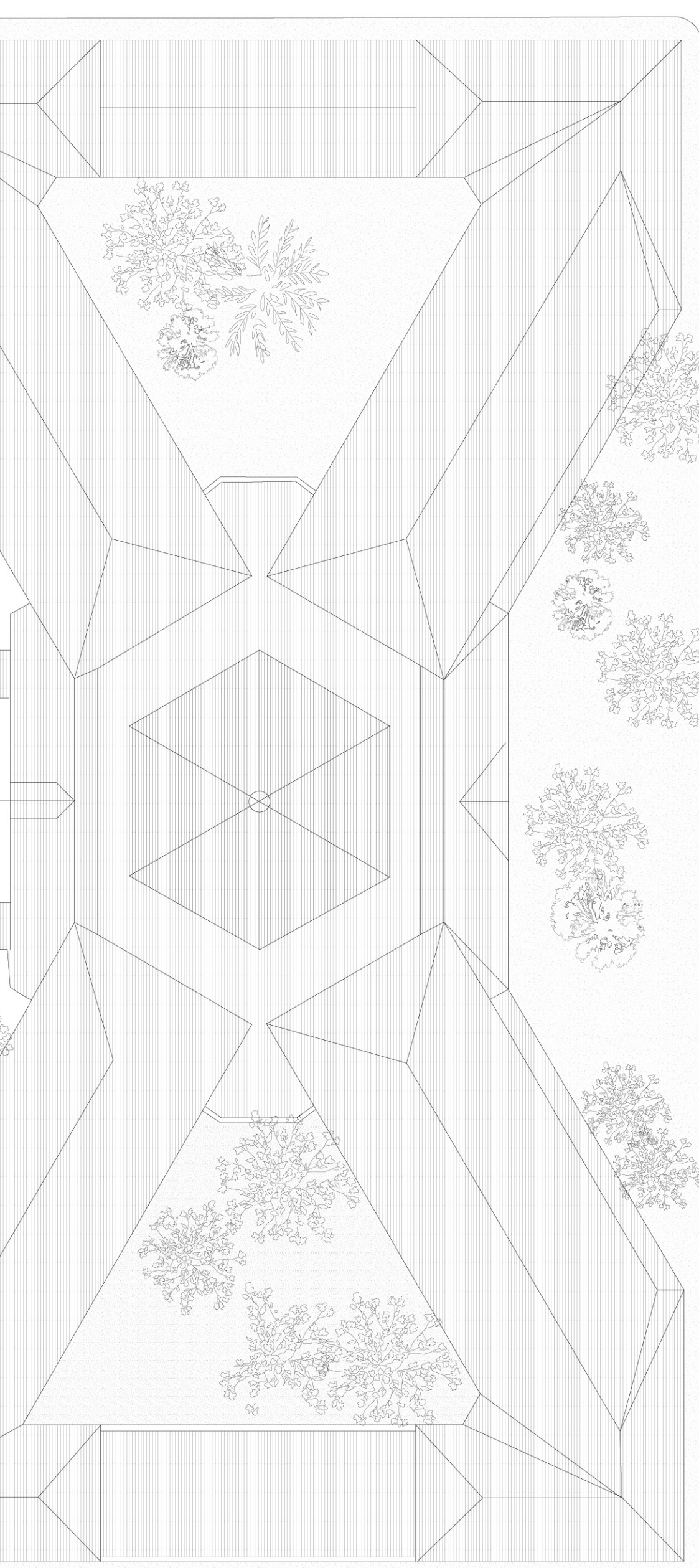
Abitare il giardino pubblico



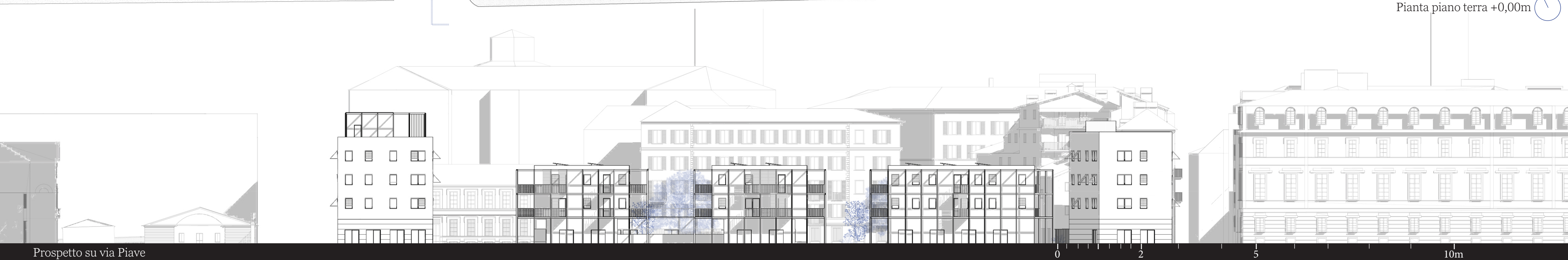
Abitare il suolo privato



Sezione trasversale

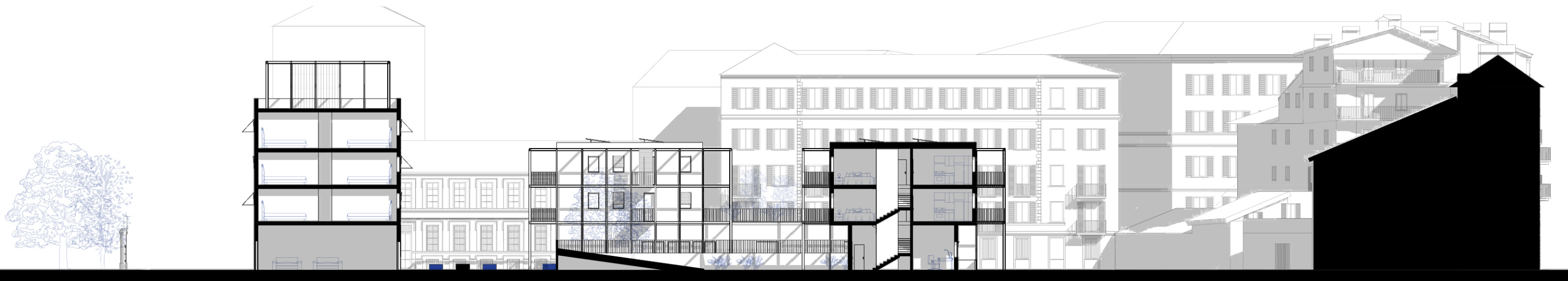
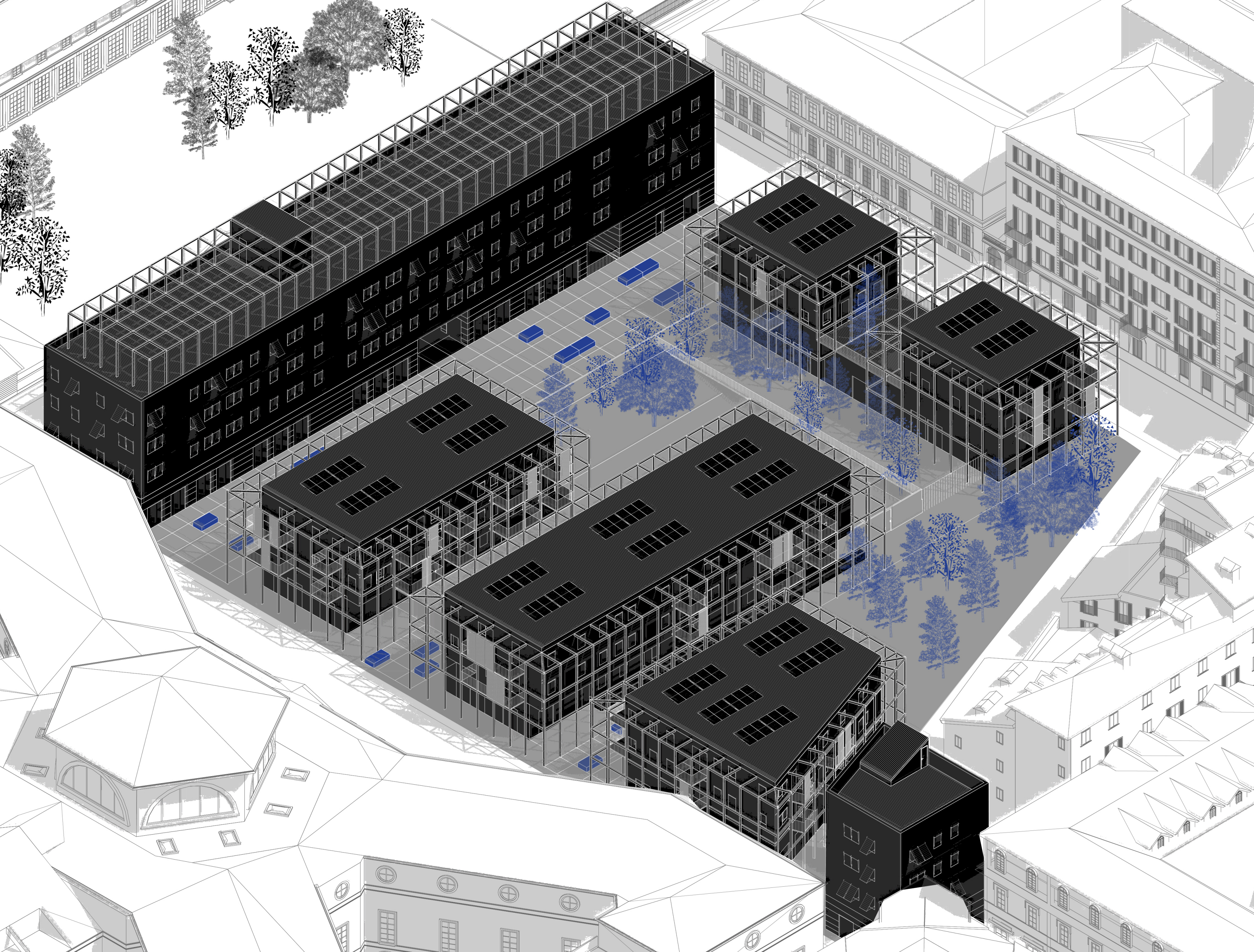


Pianta piano terra +0,00m

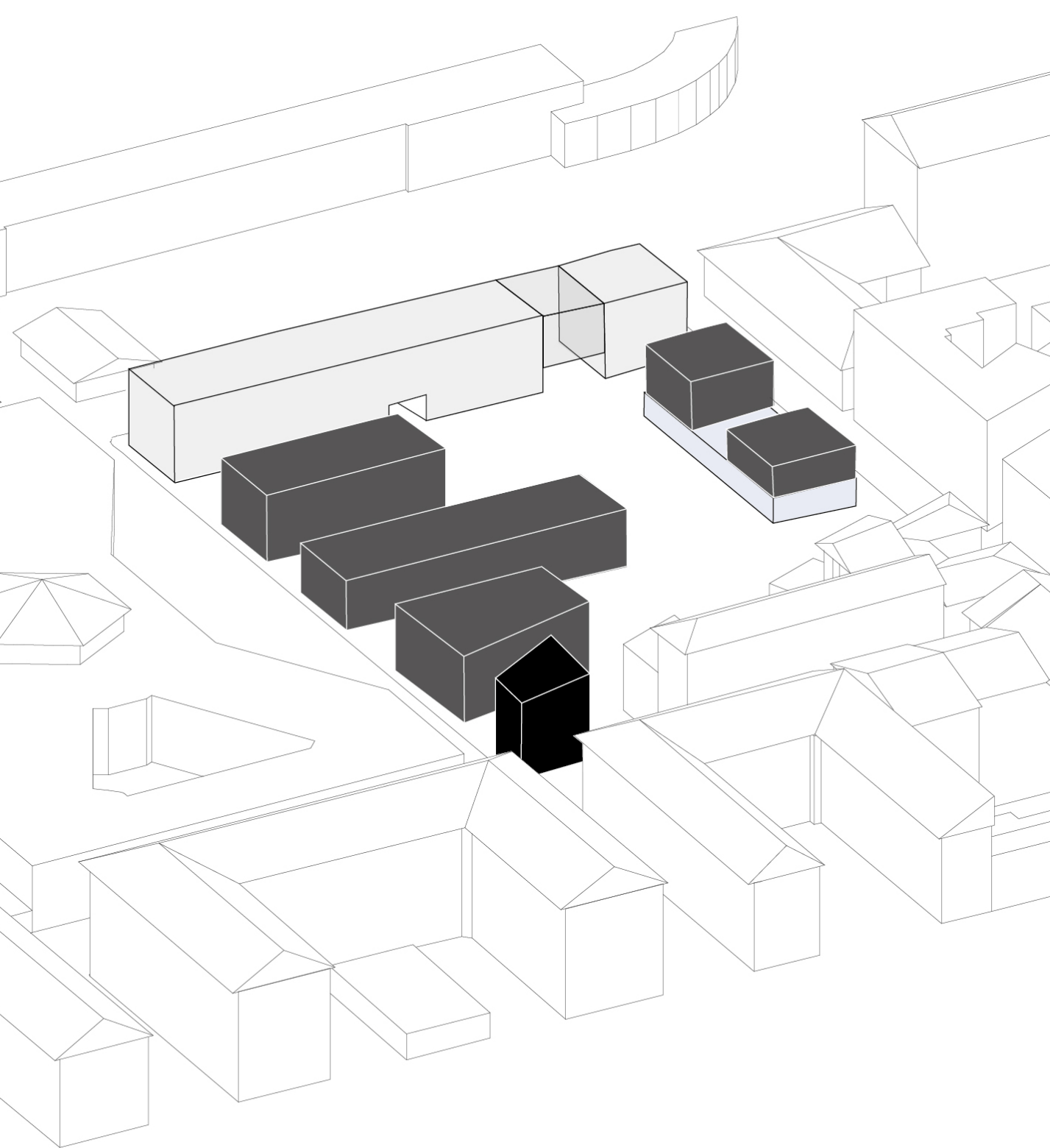


Prospetto su via Piave





Sezione longitudinale



Student housing

Appartamenti per la vendita privata

Co-housing

Co-working



Pianta piano primo +4,50m

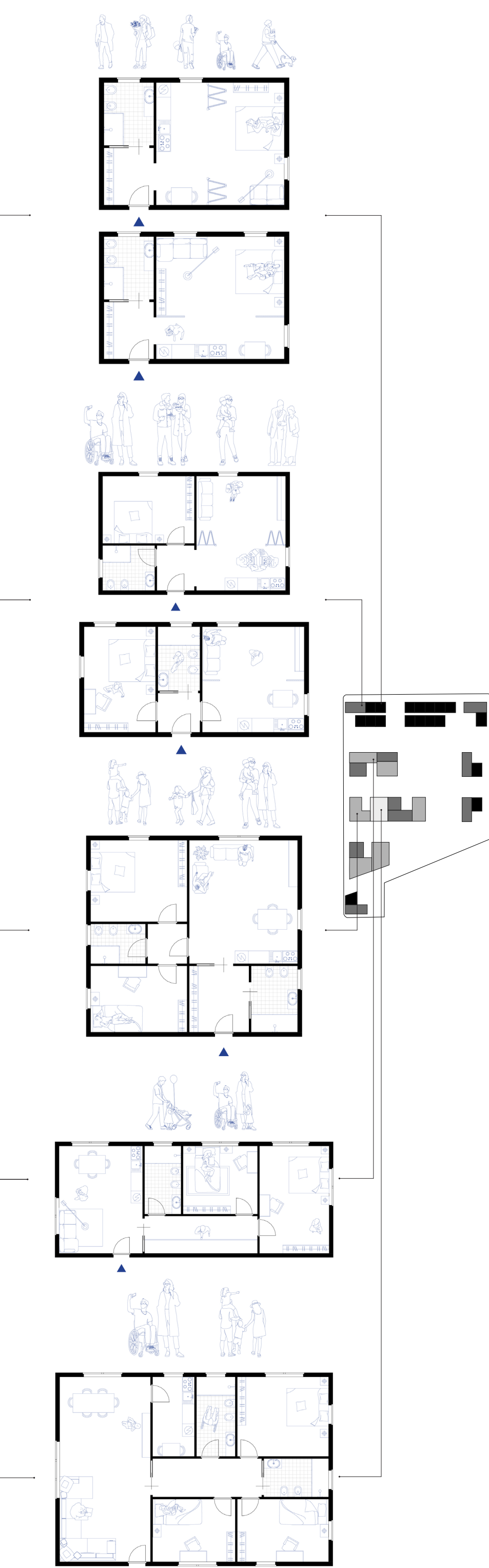
Monolocale

Bilocale

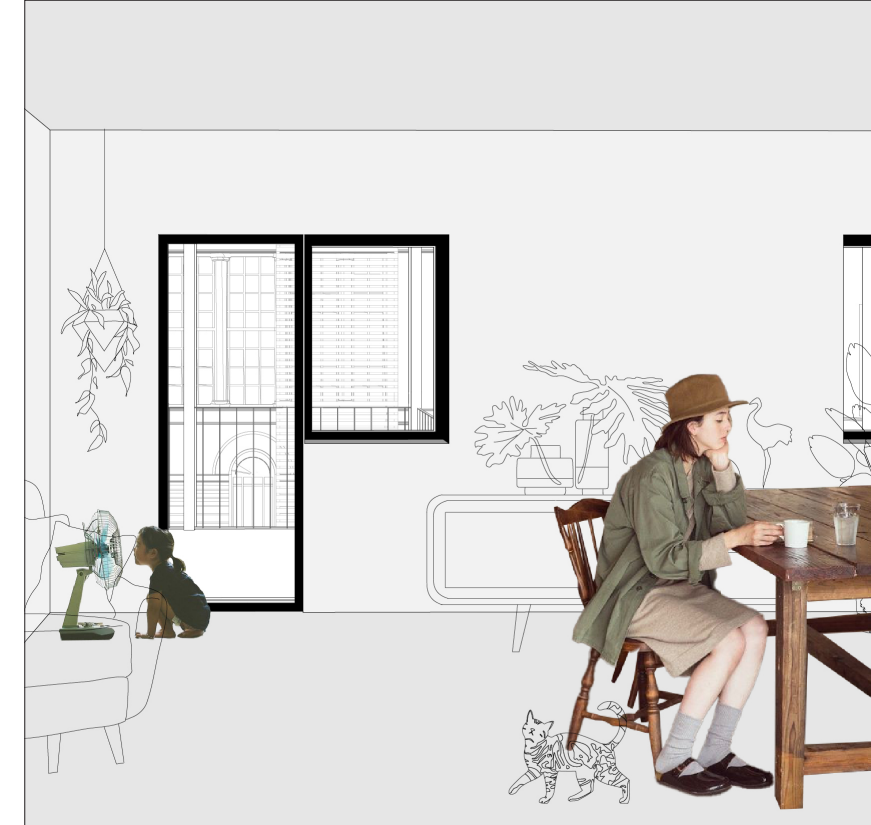
Trilocale

Trilocale

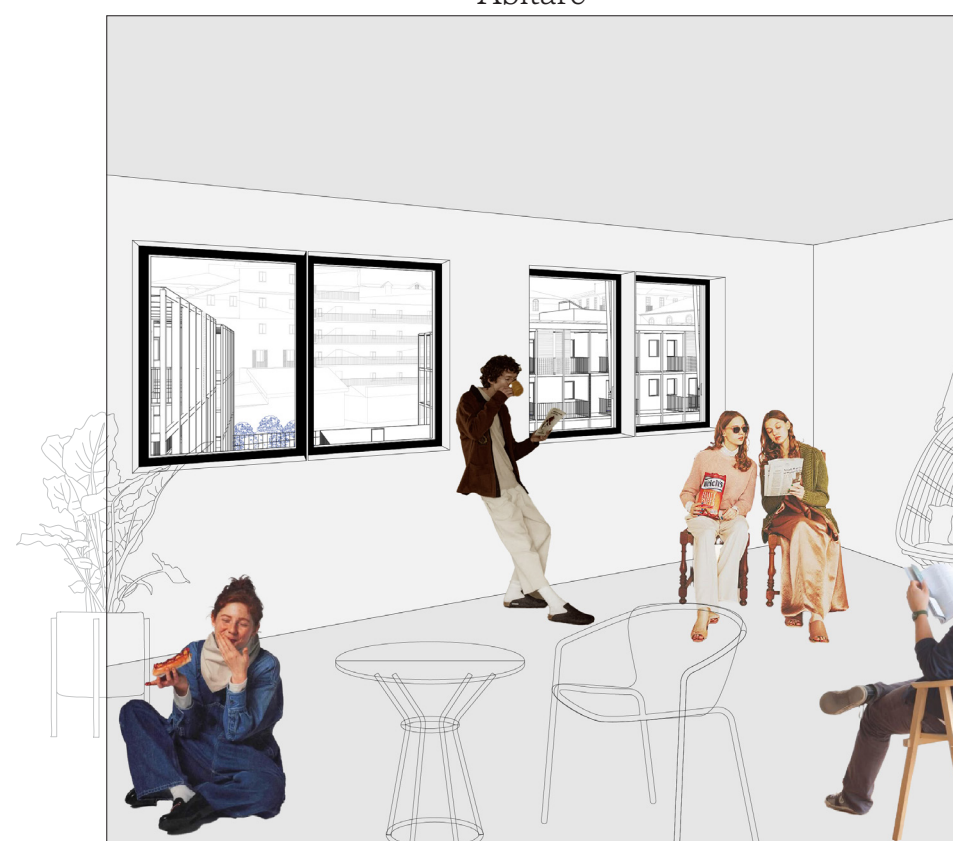
Quadrilocale



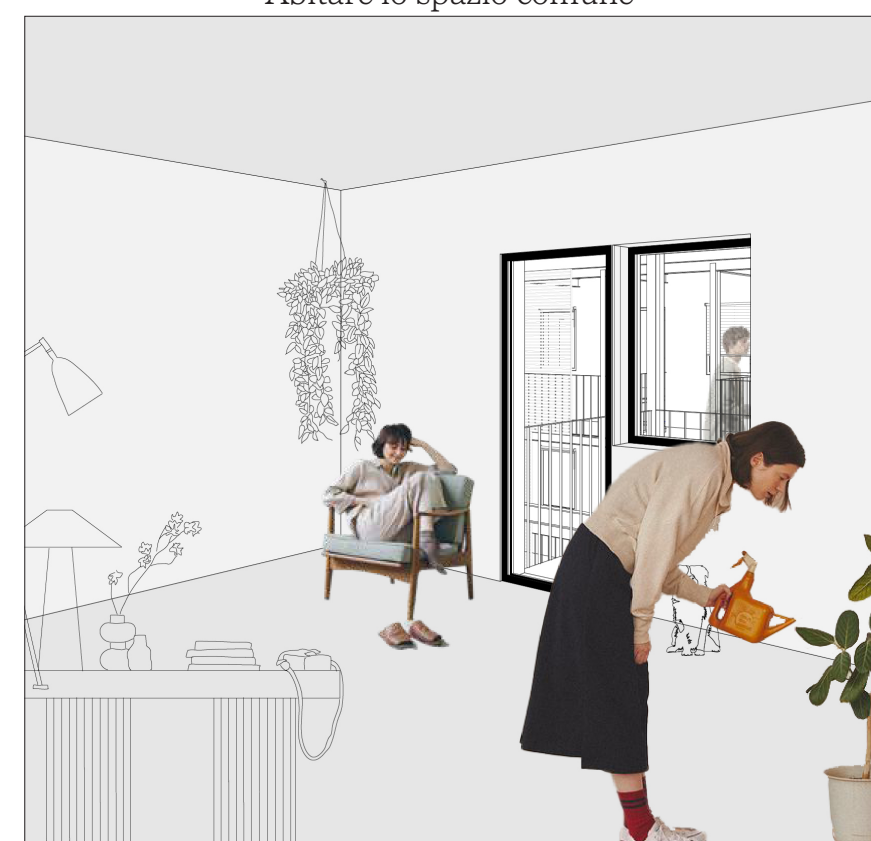
Varianti tipologie abitative con target specifici



Abitare



Abitare lo spazio comune



Abitare



Prospetto su via Bligny

0

2

5

10m