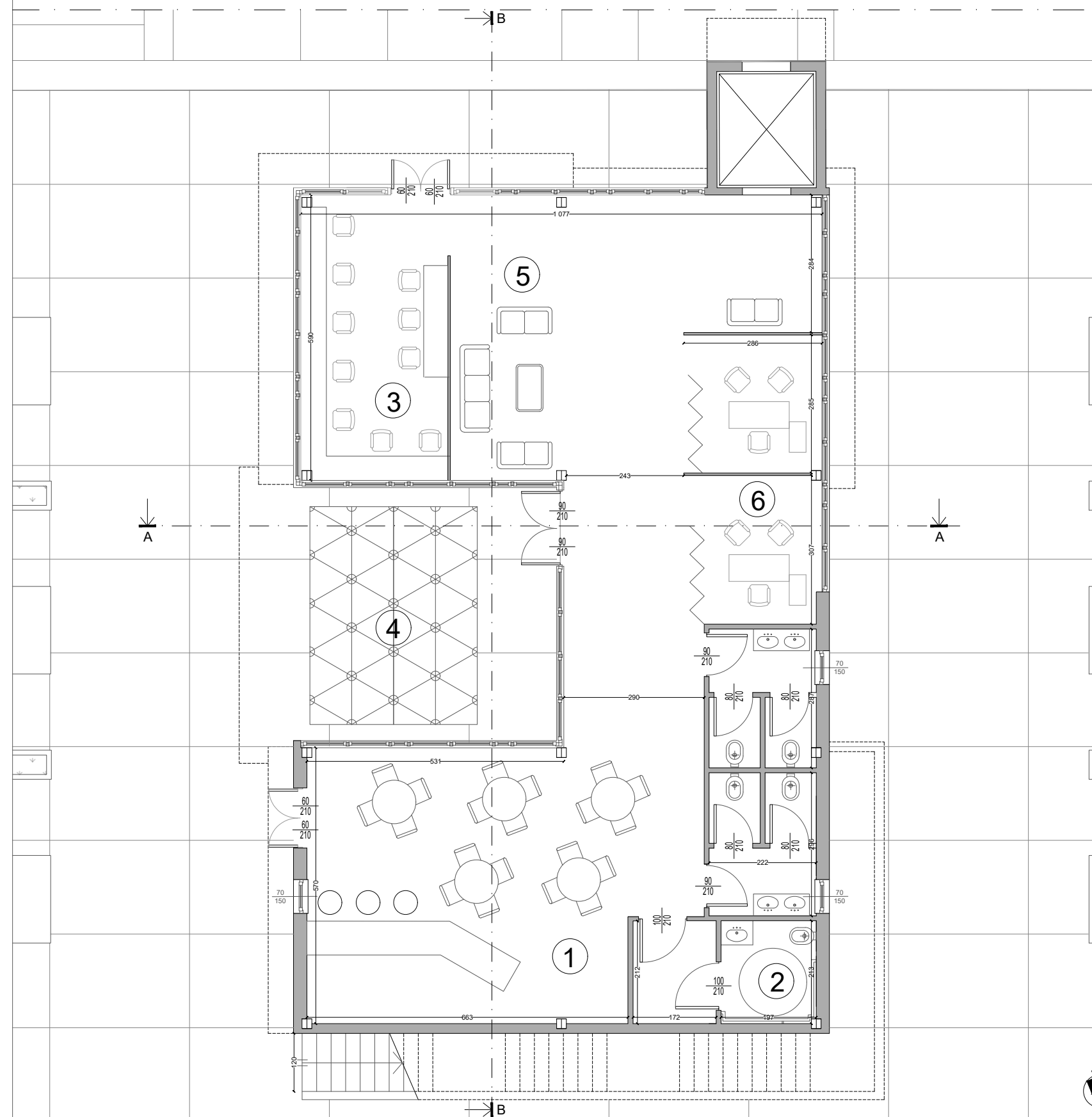


- ▲ Groundfloor accesses to the new buildings
- ▲ Historic entrance
- ▲ School main entrance
- P Parking
- 🚲 Electric bike charging station
- Sartori's project buildings
- Trasformation and renovation buildings
- New costruction
- Internal courtyard project area
- Public Park
- Green area
- Context
- Pedestrian area/path
- Walkway
- (A) Gymnasium (project not developed in this thesis)
- (B) Vertical square
- (C) Floating garden



GENERAL MASTERPLAN

The general theme pursued for the design solution of the internal courtyard project, concern the visual and functional integration of the area with the aesthetic and functional metamorphosis of the preserved industrial pre-existences and the already restored buildings.

The first important change is the closure of the area to vehicular traffic, so it remains an area accessible only to pedestrians or cycles, in particular the latter can access from the former entrance of the wool mill on Via Fricchieri, which will be restored, but will remain mostly unchanged. Near the entrance, a special area has been set up for parking bikes and charging stations for electric vehicles.

The biggest change was certainly made in the area between the municipal building, the school and the former weaving building that in the project will become the new gymnasium.

In this space, which covers an area of about 194 m², the construction of a "vertical square" and a "floating garden".

The design solution that was chosen for the vertical square includes the construction of a steel structure that occupies only part of the current surface of the underground parking cover and that rises one floor above ground level. The original positions of the openings for the natural ventilation of the underground car park and the two access stairs to the underground floor are maintained.

To mitigate the site main constraints, it was decided to realize a structure that encases and conceals the several preexisting lift heads, stairwells, utilities and access points, creating a sort of "floating garden" composed of the project's signature rectangular frames that reference the simple architecture of the surrounding buildings.

VERTICAL SQARE GROUND FLOOR PLAN - 1:200

- 1 Coffee bar
- 2 Toilets
- 3 Study room
- 4 Kinetic floor
Piezoelectric system by Pavegen
- 5 Relax/reading corner
- 6 Co-working room

VERTICAL SQUARE FIRST FLOOR PLAN - 1:200

- 7 Public roof garden
- 8 Green area - flowerbeds

