

POLITECNICO DI TORINO  
SECOND SCHOOL OF ARCHITECTURE  
Master of Science in Architecture  
***Honors theses***

---

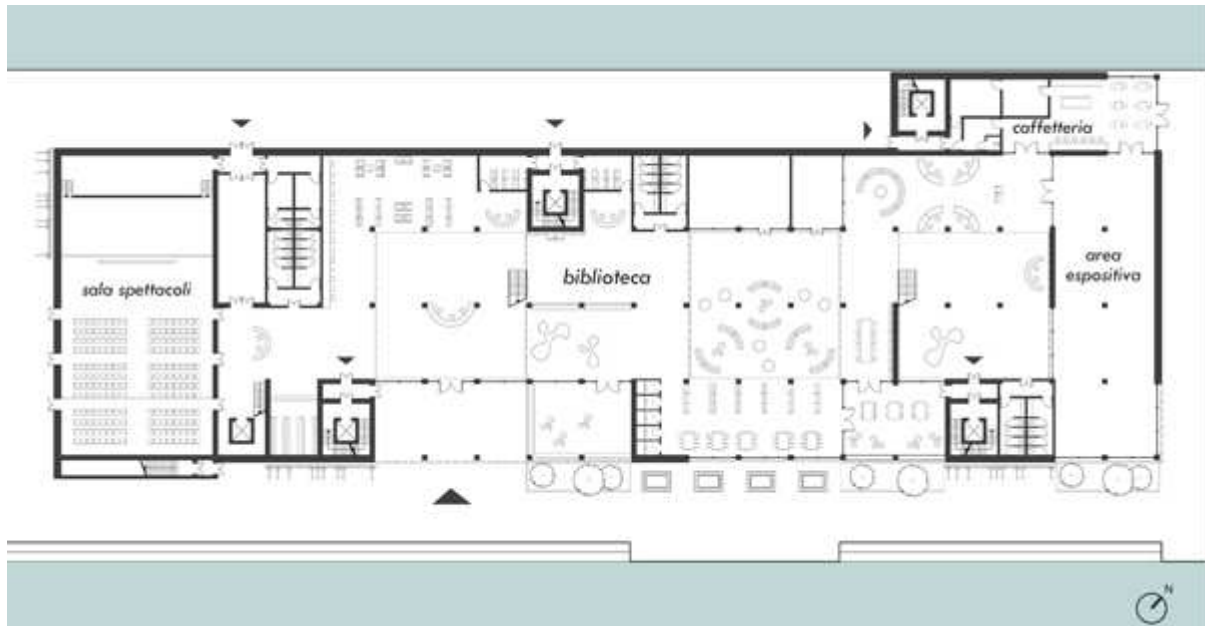
**Studies for the new phases of urbanization of Ijburg, Amsterdam**

by Elena Longo

Tutor: Paolo Mellano

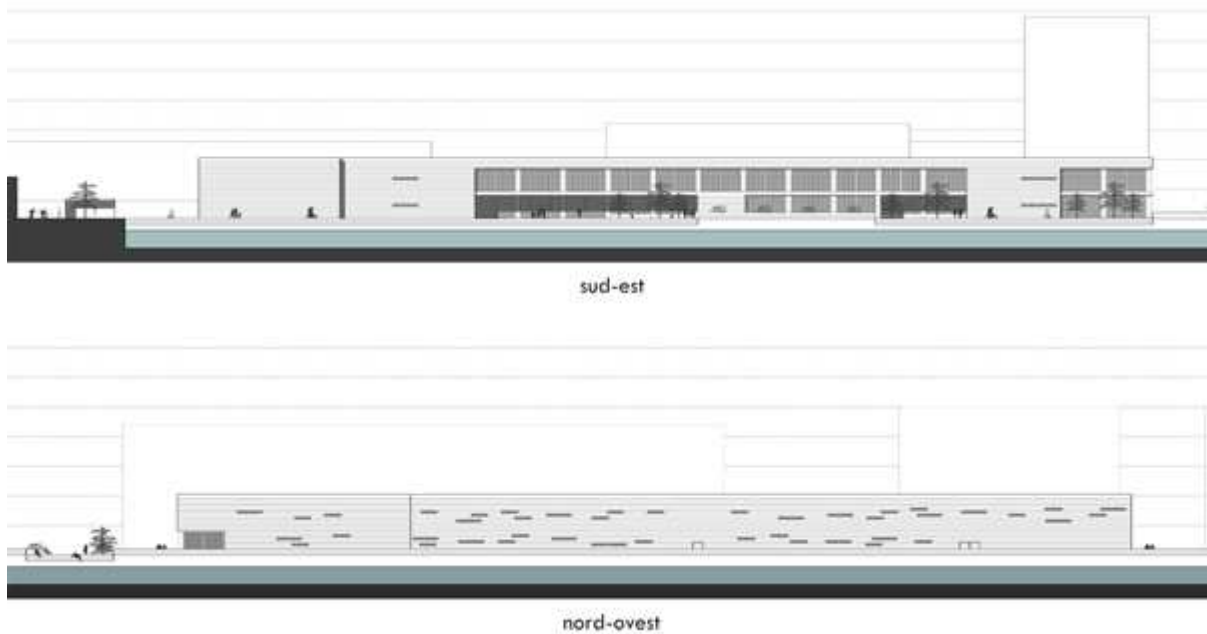
Ijburg is one of the recent intervention of the urban development of Amsterdam. It's a new district of artificial islands built on the lake Ijmeer in order to answer to the problem of the house and bring people back to the city. The plan pays particular attention to the housing typologies mix and creativity in architecture. The plan consists of two stages; the first is almost completed, despite the delays caused by the current economic crisis, while the second has an uncertain future. From the several analyzes directly made on the site, it appears that one intermediate step is necessary for the completion of the area and provision of new facilities for the inhabitants.

IJBURG 1.5 consists of an intervention to complete Rieteiland Oost with exclusive private houses and the design of a cultural center for the area of the small port of Haveneiland. It's mainly a public library for children (36% of the population). Inside the building there are also one concert hall and one area for temporary exhibitions, as well as places for recreation and social gathering as one café and one self-service restaurant. Outside long steps contribute to the relationship with the water.



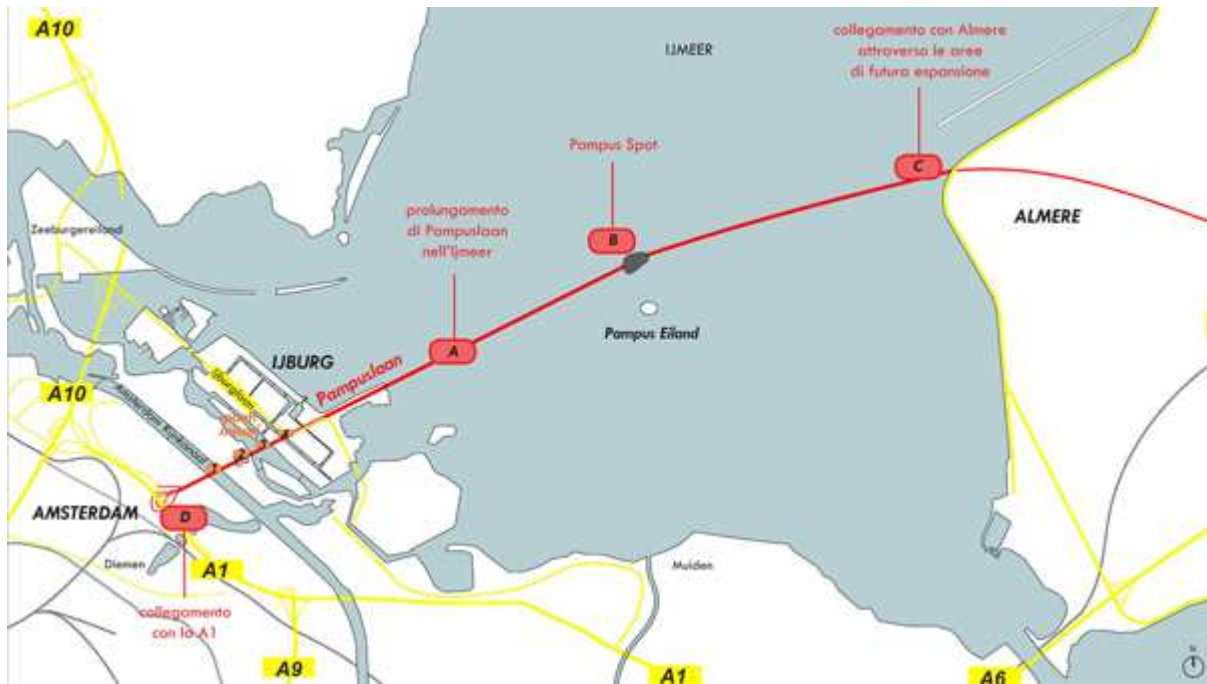
*Marina cultural center: ground floor plan*

There's a clear separation along the longitudinal axis of the building in areas for people and areas for internal services. The first are located along the South-East side to strengthen the pleasant view over the small port, while the latter are concentrated along the opposite side. There are three double-height atria with glass roof that work as filter areas for the distribution of the different activities. The public area presents large and full height windows while the service area is characterized by narrow and long openings as cuts in the metallic facade. There is a strong sense of horizontality.



*Marine cultural center: elevations*

IJBURG 2(2) is the proposal for a new connection between Amsterdam and Almere through the IJmeer. The advantages are the creation of an alternative road to the A6 with a consequent reduction of traffic jam, the improvement in the tourist attractiveness of Pampus Eiland and the contribution to the achievement of a "compact region" which is the current trend of the government. In the past many studies have been made about this new connection. Of course it would result in many benefits for both cities, but there are issues related to the high environmental impact of such an intervention. The environmental issue is at the center of discussions of government and population and it's an important braking element.



*IJmeerlink*

For further information, e-mail:  
Elena Longo: [elena\\_longo@hotmail.it](mailto:elena_longo@hotmail.it)