

POLITECNICO DI TORINO
SECOND SCHOOL OF ARCHITECTURE
Master of Science in Architecture
Honors theses

From the Zoological Garden to the Botanic Park. A suggestion for Turin

by Luca Manzone and Marco Menato

Tutor: Riccardo Bedrone

Michelotti Park in Turin during its life took many different forms.

The analysis begins with a historical research. This is made of all the historical information which characterized the life of this park. Initially it was a simple side of the Po River which marked the boundary between the city and the hills. After it became a city park which hosted a lot of relax activities for the Turin's citizens. In the mid-50s it was the Zoological Garden of the city. In the end of 80s the Zoo closed forever and, after many changes of direction, at the beginning of the new century, the interest in the park ended.

Focusing on the strengths (after a SWOT analysis and a physical and social analysis) we prepared a redevelopment and refunctionalization project of the area. We prepared the project after an analysis of some examples of river parks, botanic garden and biodomes in the world.

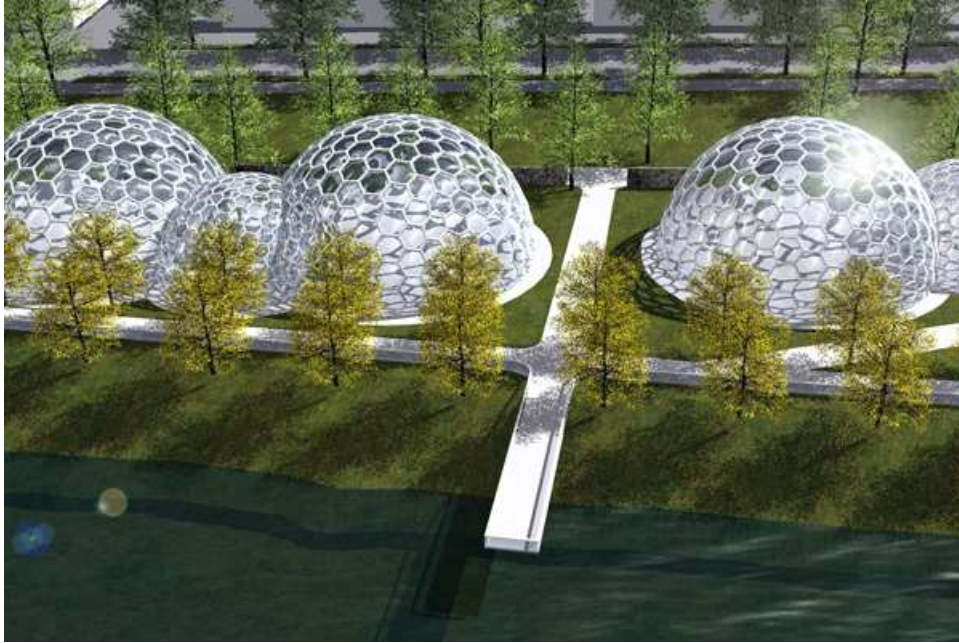
We focused on some competitions on the planning of new river parks. After we showed the closest project to our botanic park. To understand the botanical species which we had to work with, we analyzed the existing flora inside Michelotti Park through the classification of the species specifying the description and the placing in the masterplan.

After the analysis of the suggestion that we found in the international projects, we described the projects that were implemented in the park after the end of the Zoological Garden.

We showed the projects of "Parco Giò", a playing area for children with spaces for lots of group activities, and "Experimenta". The exhibits of Experimenta were born in Villa Gualino in 1987, then they moved in Michelotti Park from 1999 until 2006, during the 20th Olympic Winter Games of Turin.

In 2007 an architectural competition, which name was "la Città, il Fiume, la Collina", took place for the redevelopment of a part of Borgo Po district. So we collected, between thirty participants, the most interesting projects for the ex Zoological Garden area.

After we show the redevelopment project. The aim is to create a new center of attraction, requalifying the area with the reuse of some of the original building of the Zoological Garden (for example the Aquarium-Reptilium by Enzo Venturelli) giving a new function and building five new structures, generated by the intersection of some geodesic domes which host different biomes characterizing our planet.



View from the waterfront

First we made a careful analysis about the classification of climates by Koppen, working on the climatic zones of the Earth.

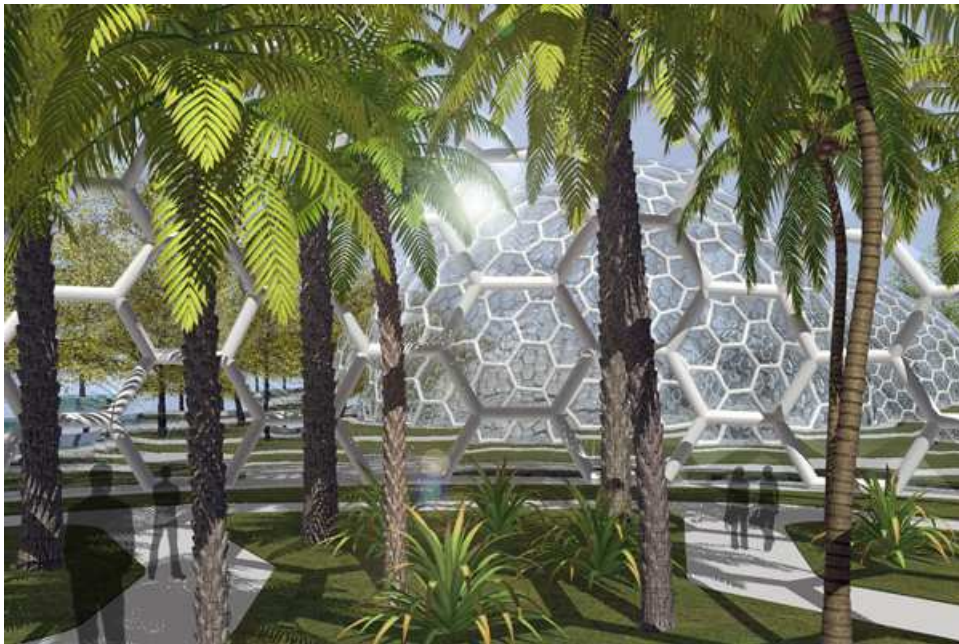
After the analysis of the climates and their placings, we chose the typical biomes to recreate them.

The arboreal species, hosted by the ETFE biodomes, were classified and depicted in detail dividing them for climates and biomes.



Overall view of the waterfront

Inside the original buildings which were riqualfied we placed a bar, a restaurant, offices, laboratories and some teaching rooms.



View inside the Tropical Orchard

As further potentiality of our project, we thought about the opportunity to use the two parts of the new park (the private one and the public one) for horticultural shows inspiring by “Euroflora” in Genoa.

We thought about the opportunity to divide the construction of the park in two different phases, to make this project sustainable and producing gain from the profit of the park and the related activities.

For further information, e-mail:

Luca Manzone: lucamanzo84@hotmail.com

Marco Menato: marcomenato84@gmail.com