

POLITECNICO DI TORINO
FIRST SCHOOL OF ARCHITECTURE
Master of Science in Architecture
Honors theses

Another *Mole*. New spaces for the Museum of the Cinema in Turin

by Fabio Rinaudo and Alessia Spezzano

Tutor: Emanuele Levi Montalcini

Co-tutor: Raimondo Guidacci

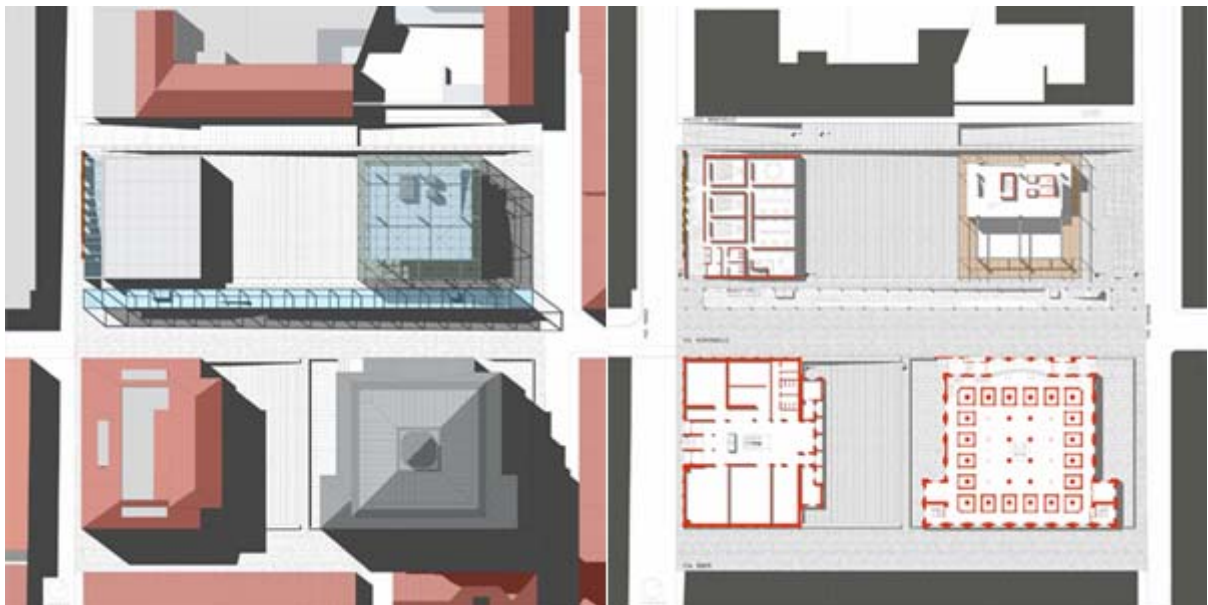
The project, which concerns the historical centre of Turin, focuses on the area around the Mole Antonelliana, the building which is now hosting the National Museum of the Cinema.

The Museum, as it is today, doesn't have enough space; so our project creates new spaces for exhibitions and for any other museum activity.

The main idea is to create a building next to the Mole Antonelliana; even though this building is completely different from the Mole, it recalls to our minds the idea of an indoor big space, just like the one we find in the Mole.

Antonelli's masterpiece owes its nickname to its grandness. We figured to create, with today's architectural language, another big space...another *mole*. (*mole* is a noun used in the Italian language to indicate a huge quantity of something).

The project consists of a glass cube set next to the Mole, with the same ranging of the Mole. The impact of the building on the existing structure of the city is undoubtedly strong.



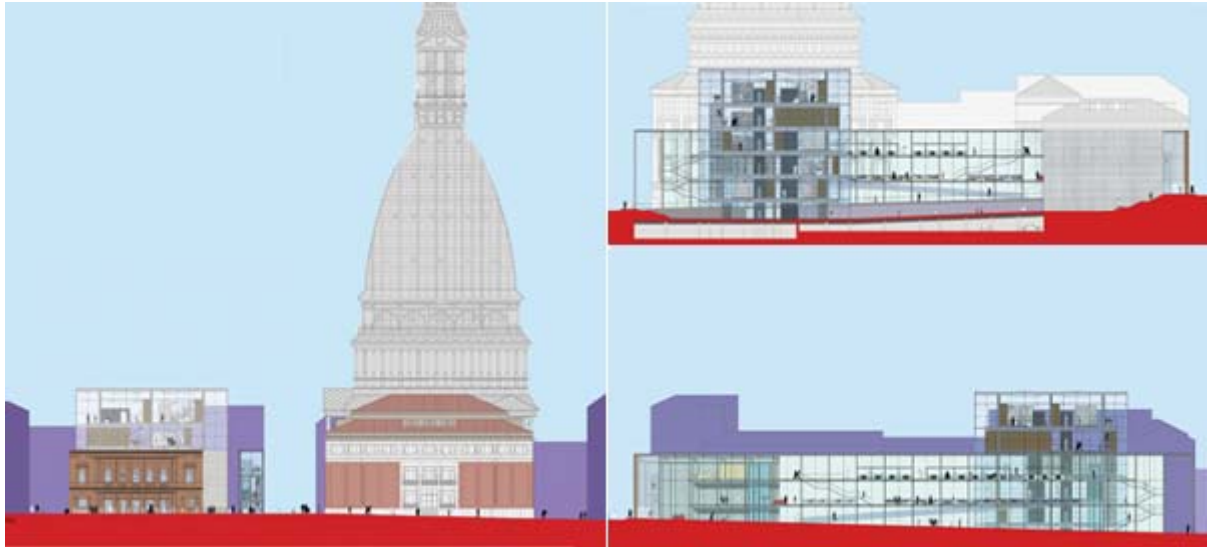
Plans of the roof and of the ground

At the same time, however, the transparency of the cube makes it interact with the buildings nearby. Transparency enables to create a direct contact with the outer world.

The project concerns also the old block.

The second building we designed emerges on the remains of the old Teatro Scribe. We maintained the original façade of the theatre, linking to it the new concrete structure.

It is the new library and it is not easily perceptible from the outside; in fact we tried to create a caveau for the books.



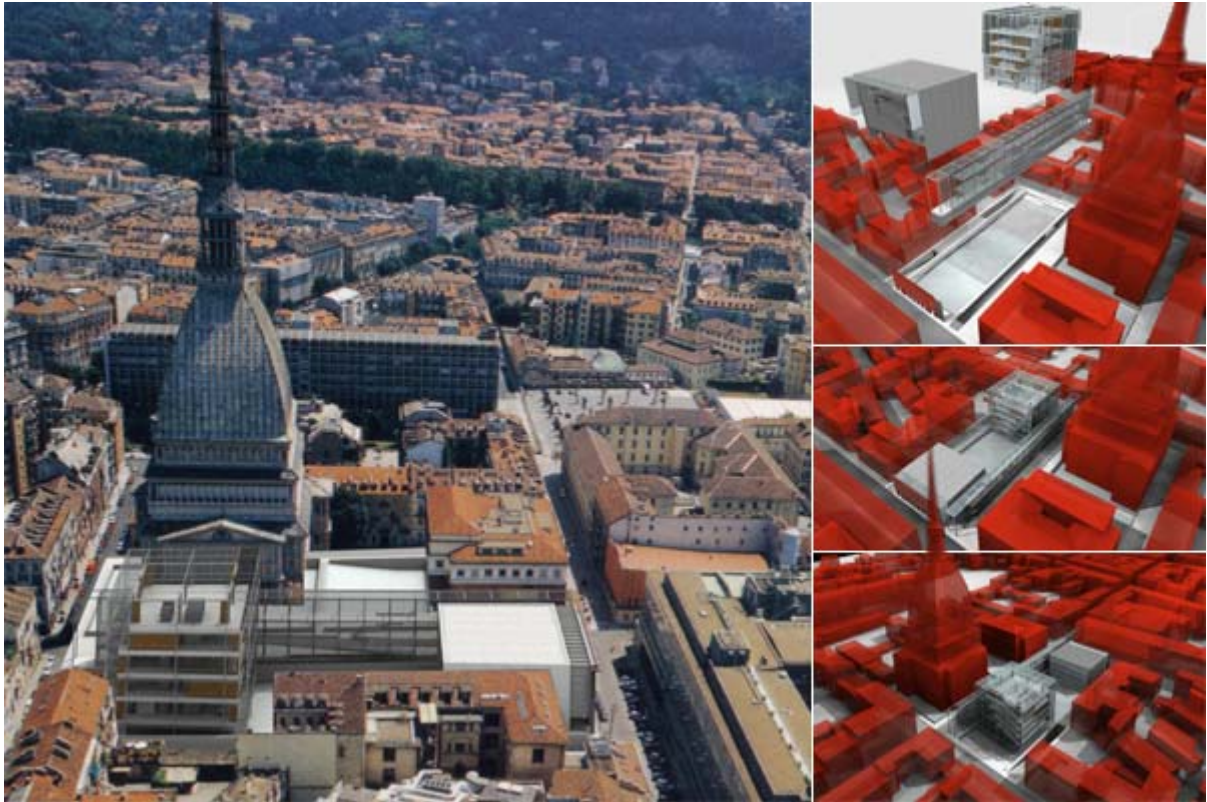
Elevations and section

The third element of the project is a gallery made of glass and steel which covers via Montebello for the whole length of the block.

This is a multifunctional link : it connects the library to the cube; it is an alternative pedestrian route; it links various parts at different levels.

In the gallery you may find: reception and information desk; bookshop and cafeteria. In addition, thanks to its particular shape, it can host temporary exhibitions.

The -1 level has such a ramification that links the theatre to the cube; it is directly connected to the underground parking, which is right under the ramp; it links also the new buildings to the RAI building in via Verdi n°31.



Renderings

The project concerns also this building, but it would restore only the indoor spaces without modifying the outer structure .

We considered a change also for the area between the RAI building and the Mole.

We suggest the creation of an inclined plan, just like the one between the library and the cube, but with an opposite slope.

For further information, e-mail:

Fabio Rinaudo: fabiorin@yahoo.it

Alessia Spezzano: blessia@interfree.it