

POLITECNICO DI TORINO
SECOND SCHOOL OF ARCHITECTURE
Master of Science in Architecture (Environment and Land)
Honors theses

New ties ... New polarities. Plan of requalification of the sides of the Ellero torrent in Mondovì Breo

by Micaela Cerri

Tutor: Bruno Bianco

Co-tutors: Orio De Paoli and Michel Perloff

The work introduced in the following thesis aimed at the requalification of the area situated to the margins of the historical center of Mondovì Breo, on the sides of the Ellero torrent. The area object of the project can be subdivided mainly, both to morphologic level and to functional level, in two fields: on one side it is constituted from a wide large square used as parking and, two days a week, as market-place; from the other it is characterized from the presence of a slope covered from uncultivated vegetation, partially occupied from the Italgas center and the old tracing of the economic railroad for Bastia.

The plan moves from the will to confer to the entire area a more homogenous identity and functional them, in the attempt to transform it in a city hinge of strongly morphologic and efficient meant.

To such purpose four are the main objects individualized, to which correspond respective interventions:

New links:

The substantially linear development with course north-south that characterizes both Altipiano and Breo, express the necessity of giving life to cross-sectional connections in a position to exceeding the strong unevenness between the two villages.



Pedestrian footbridge

The interest is therefore face to the realization of new logons, that they take to shape in the planning of two pedestrian footbridges in wood and iron, therefore to withstand the problem of the orographic discontinuity, a critical factor for the fluidity of the system of pedestrian mobility.

New roles:

To requalify the area occupied from the public gardens and the slope below realizing a public park that concurs to establish an interactive relationship between customers and place, donating a total image similar to that one of a great reticulum that, taking advantage of the particular orographic situation of the site, adages on the slope in declivity towards the Ellero torrent. Privileging the speech of pedestrian accessibility, the plan proposes of giving life to a several distance on levels, distributed on degrading terraces towards the Ellero torrent and connected by a staircases and lifts.

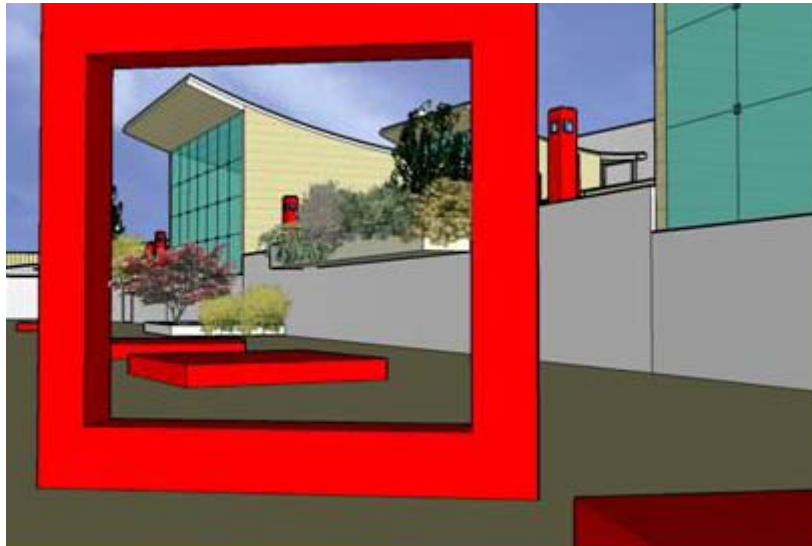


Total visual of the new multimedia center

The choice to transform Ellero square in a pedestrian square, moreover, has rendered necessary the study of an alternative arrangement apt to resolve the problem of the parkings. Therefore it has been provided to the realization of an underground parking in correspondence of the several terraces of the park, so as to obtain 4 various levels (places to the relative quotas 373m, 376m, 379m and 382m) connected from lateral ramp and with places car on both sides of the lane.

New polarities:

To equip the city of Mondovì of an attractive pole that takes advantage of these strategical area and already of the existing services in the adjacent zones (economic activities of the historical center and parks) identifiable in the realization of a multimedia center composed from one series of modular buildings which assume different functions: “mediateca”, library, “emeroteca” and cafeteria.



Bench-frame and multifunctional slabs used as furnishings of the park

Always re-entering in the optical of string together the city of Mondovì, the multimedia center in this context becomes the point that renders such cohesion strongly, the place in which converges more activity than collective interest.

New densities:

To recreate “the effect public square” whose only function is that one to shape itself on hand like city area of the community. The project’s attempt is that one to take part inside of the area rendering it completely pedestrian and placing the place cars in the underground parking to come true itself on the opposite side of the torrent. Such solution, than to logistic level can be supported from the new cross-sectional ties with the public park, moreover concurs to upgrade the strong line dictated from the wings of the market and to increase to the alignment with Corso Statuto, by the realization of two pedestrian tree-lined avenues that delimit the borders of it.

For further information, e-mail:

Micaela Cerri: micaela.cerri@libero.it