

POLYTECHNIC OF TORINO
FACULTY OF ARCHITECTURE 1
Degree in Architecture
Honors theses

Places for Alzheimer affected

by Mauro Vit

Tutor: Eugenia Monzeglio

The gradual ageing of people in industrialized countries has involved great effects on society and institutions and it has almost radically changed its economy, health services, retirement systems up to influence life habits and interdomestic dynamics. These demographic surveys have inevitably lead to an increasing health expense and to a growing need of proper services. Insanity is one of the main reasons for morbidity and mortality of elderly people. It represents one of the major medical and social problems in today society. It induces a high functional damage and it determines important lacks in the ability of performing everyday activities; it has a progressive nature and it leads to complete disability. There are no pharmacological therapies which are able to cure it up to now. Treatment approach is mainly focused on rehabilitation of knowledge, functionality, behaviour and affection. Rehabilitation aims to limitate the impact of disabling situations through operations directed to keep the highest autonomy level according to a certain clinic state. Suitable interventions to slow the disease progression and to better the patient and the assistant's life quality are turned to the person through specific techniques and to the environment in which the patient lives through the optimization of the environment characteristics with the purpose of making the adaptive relation easier and of reducing the handicap level. Symptoms, such as the knowledge compromission of memory, orientation, understanding, communication, sight, hearing, calculation, judgement, learning, control ability and behaviour disorders create in the subject a disabling situation with regard to the environment. Appropriate space contrivances can support, help and compensate this situation. Care environments from residence houses to day assistance and residential structures must be conceived as therapeutic instruments which, together with the health component must match with the complex needs of the patient. If you want to operate on the space requirements with the purpose of compensating, stimulating, correcting preventing the patient from dangers you must know well the effects the disease has, especially when you have to execute assistential structures, even because there ins't any precriptive technical set of rules on the subject. In this degree thesis I have particularly taken into consideration the environmental interventions and contrivances that were possible inside the abode, which is the place where the patient lives for most of the desease course and I have traced some guide outlines for a correct planning of the day assistential structures. I have besides developed the plan of a day center in service to the rest house "Istituto di Riposo per la Vecchiaia" in Turin.

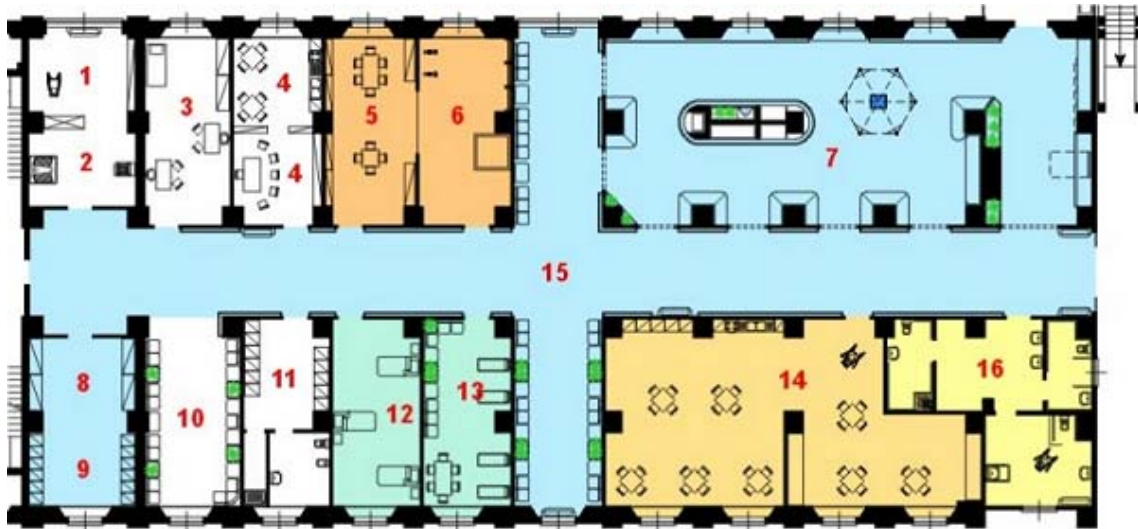


IMAGE 1 - PROJECT

Day Center Plan (Caption: 1 Electromechanical closing 2 Medicals store 3 Room with wheel-chairs-washer and emptier 4 Linen-room 5 Wardrobe 6 Surgery 7 Waiting-room 8 Staff restroom 9 Assembly-room 10 Staff Changing-room 11 Staff toilet 12 Tinkering-room 13 Patients restroom 14 Gymnasium 15 Patients relax-room 16 Sitting-room 17 Wandering-path 18 Dining-room 19 Toilets 20 Assisted bathroom 21 Emergency exit)

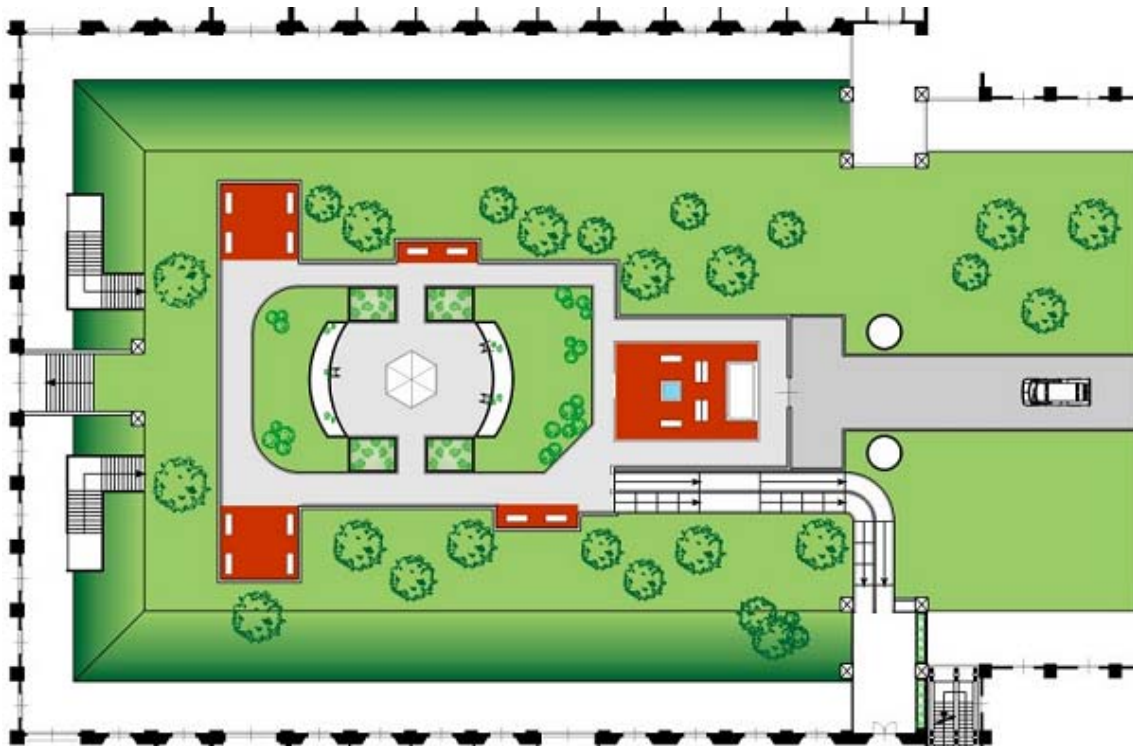


IMAGE 2 - GARDEN

Garden Plan



WAY OF WANDERING



GARDEN OF ALZHEIMER

Figure 3: 3D Views

Keeping the family environment, then delaying or avoiding the resort of the Institute are the care priority purposes, the patient's own house becomes an important element for the care aim, where patient and family must live together, however, in the highest wellbeing. The interventions examined in this thesis are focused on the systems and furniture level, on environmental contrivances level, on building elements contrivances and on building level. About the assistential structure in the thesis there is the list of the needed rooms and the contrivances for a correct planning. In the contrivances for the inside rooms, I cared about the examination of components for each room, building materials, systems and furniture elements; I listed the contrivances for the floors and walls covering, the windows and doors, the water sanitary systems and the walking helps, the lighting and air-conditioning systems, furniture elements and sound and visual comfort. For the outside section I have analysed the single constitutive elements: 1 Enclosures/bounds, 2. Paths, 3 Rest areas with equipments and furniture. 4. Vegetation 5. Signals and lighting.

For further information, e-mail: basoloc@gruppocredit.it