

POLITECNICO DI TORINO
FIRST SCHOOL OF ARCHITECTURE
Master of Science in Architecture (Construction)
Honors theses

University campus in Paris-Ivry

by Ana Victoria Faría Delfino

Tutor: Pierre-Alain Croset

Co-tutor: Cino Zucchi

This project started with the challenge of doing an university campus that reinterpret the structural walls system of the tower, where each volume is thinking as a "box". In the complex the tower done with a structural walls system is built as a "free" overlay of each "box" around the central nucleus of circulation. The task was to reinterpret the idea of a vertical composition of this structural system in a horizontal one.

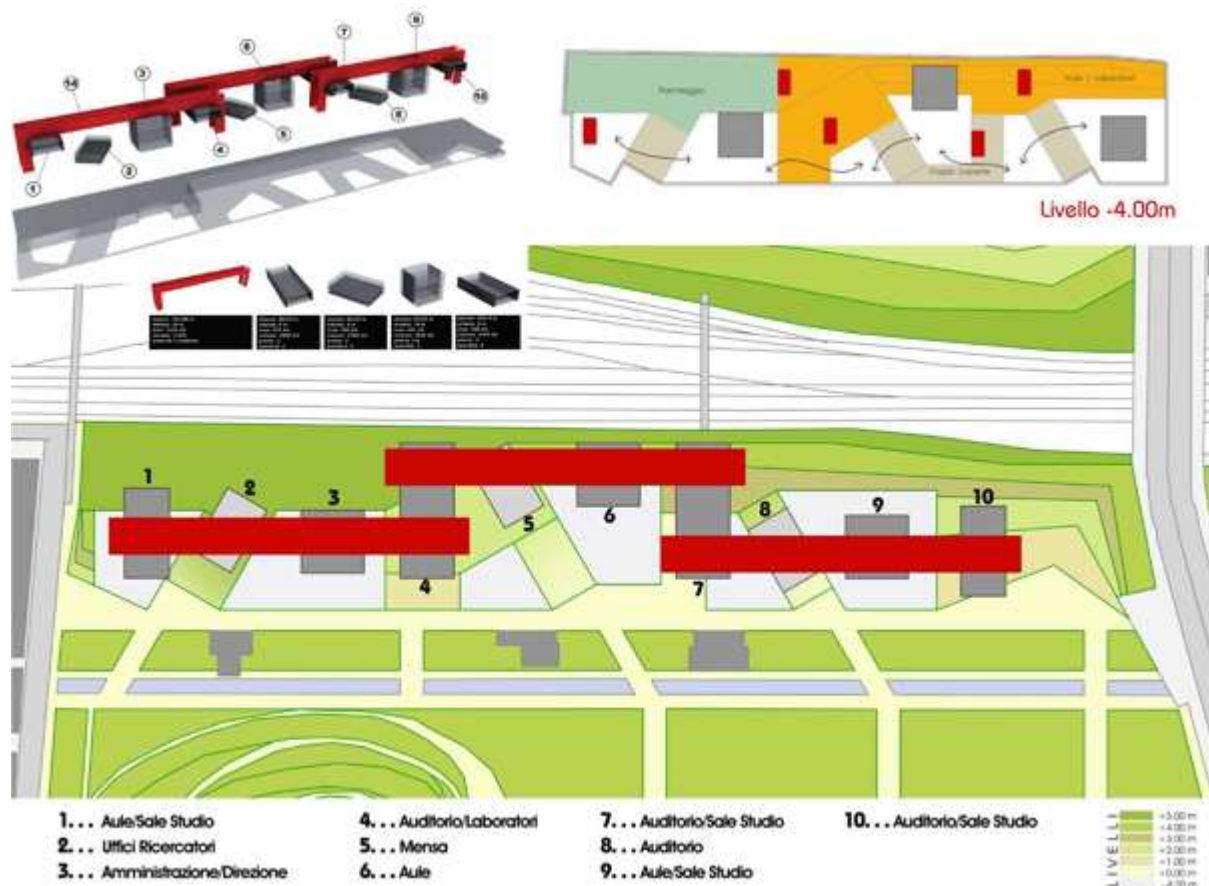
Working with structural walls system involves a large-scale design of unique buildings that seem to subvert the most basic laws of static and for this stand in the popular imagination as an icon of technological progress. The goal of this project is to build a new university campus with an exceptional character because of the structure, dimensions and architectural shapes which find justification in its public program and location. So this project has been thought as a catalyst of the place for its urban requalification. It was used the Ivry Confluence project as a base where the university would be an endpoint of one of the axis proposed by it.

Simultaneously, the theme of the project, the university campus, prescribed me to respect standard spaces very specific and the different needs of heterogeneous users: students, professors, researchers and even the community of Ivry. To combine these differences, the element of the "Parc Departemental Des Cormailles" was of fundamental importance in the architectural composition. The same grand scale of my project could be done and is totally enjoyable thanks to the important green space overlooked. Mutually, the building and the park take benefit from each other in a game of visual, pathways, etc.

Another element was the railway located at east of the project. The design intent was to shield the park from it by working on the levels of the land that will create the feeling of burying the railway and then the location of the campus on this slope. It is an artificial extension of the park that is perforated creating different courtyards. It is created three areas of privacy: the public as the Cormailles Park, semi-public as the squares and courtyards and private one, which will be like the study rooms in the inclined plane.



In the built part the idea was to retake the composition of the vertical structural wall system of the tower in a horizontal way. How could anyone do to reinterpret the idea of the tower with its boxes and nucleus? How could be recreated the greatness of the cantilever boxes? How to do the linearity a characteristic of the project without being monotonous in an area of 400 meters of length? How to create a proper identity of university and at the same time be a focal point of an urban project? How to maintain a horizontally next to a tower of 120 meters without being insignificant? These are the questions asked each time to the project. In this way began to raise the idea of designing a portal on which will be hang the boxes.



It was decided to split linearity through three portals of 120 meters in length and 24 in which each support becomes a form of movement. These portals are characterized to be monolithic elements which serve as a support for the project. They become icons that change the skyline together with the tower. These are closed elements that have the zenithal light. Also, these portals help to divide the administrative functions from those academic. The farthest portal from the tower has the administrative functions.

As for the boxes, had to be extreme related to the portals. Their disposition is characterized by being playful but deep down has a sense of composition. It was decided to create 4 types of boxes that differ in whether measures, functions and relationship with the park, the portal and the inclined plane. At the same time it was trying to break the regularity in the inside of the boxes through the inclusion of representative elements that define spaces. Who runs the university can enjoy a dynamic experience that is made through double heights, inclined planes, panoramic windows that allow you to also have a direct visual relationship with the park.



For further information, e-mail:

Ana Victoria Faría Delfino: victoria.delfino@asp-poli.it