

POLITECNICO DI TORINO
SECOND SCHOOL OF ARCHITECTURE
Master of Science in Architecture
Honors theses

Design of “New General Hospital in Moncalieri”, Torino

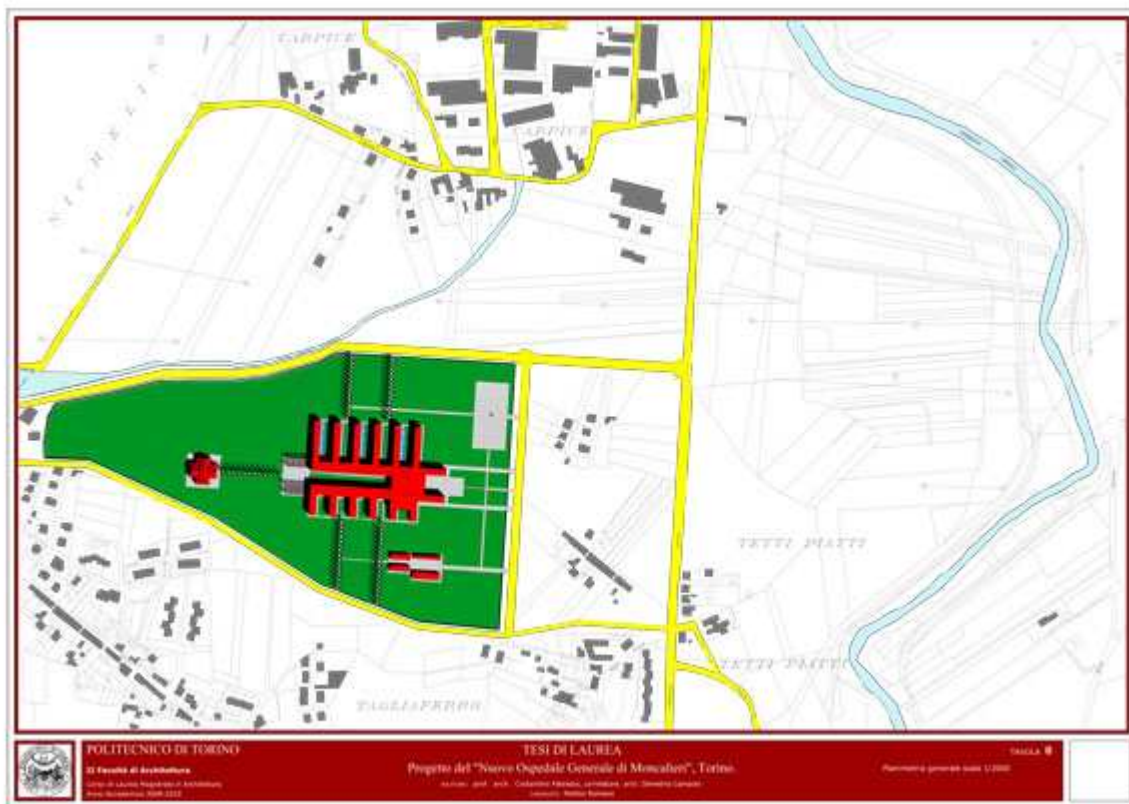
by Matteo Romano

Tutor: Costantino Patestos

Co-tutor: Demetrio Campolo

The “New General Hospital of Moncalieri”

The plot of land concerned by the project planned to be implemented for the building of the “New General Hospital Moncalieri” is located in area of Carpice, within the Municipality of Moncalieri on the border with the Municipality of the City of Nichelino.



BASEMENT

Height: 3.40 m.

The staff room, the mortuary chapel and the room for the rest of the bodies (morgue), with adjacent space for the funeral, are laid. Besides these there are the pre-treatment and decontamination room, storage rooms for clean and dirty materials and the rooms for the storage of sterile materials and relevant sterilization.

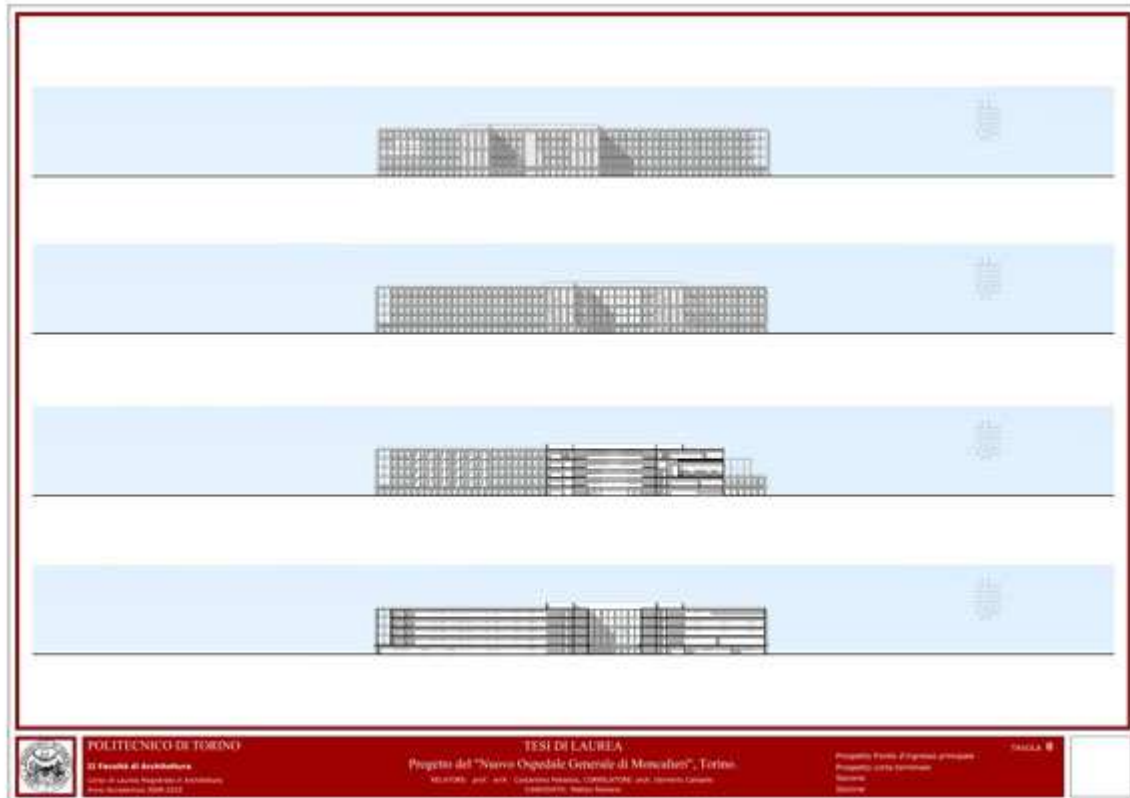
Alongside outer entrance, adjacent to the mortuary chapel, a carriage ramp has been designed with an adjoining manoeuvring space intended for the transit of the funeral vehicles used for carrying corpses.

GROUND FLOOR

Height: 0.00 m.

This includes: entrance for ambulances, temporary in-patient room, medical examination and treatment room with possible surgical service, emergency & triage room, reception and waiting room, nurses' work room, rooms for specialist examinations and storage room for dirty and clean materials. In the wings corresponding to the in-patient department are distributed, starting from the section adjacent to the emergency room, blood sample taking rooms, pre-hospitalization rooms, dialysis rooms, nurses' work rooms, medical examination & treatment rooms, storage rooms for clean and dirty materials, storage rooms for stretchers, endoscopy rooms, rehabilitation spaces, massage therapy rooms and articular manipulation rooms, nurses' dressing rooms (fitted out in each wing intended for diagnosis or hospitalization purposes), diagnostics rooms and diagnostic radiology rooms, private offices for the medical staff.

In the wings fitted out on the opposite side are distributed the restaurant hall (including a full courtyard), the lounge bar, three rooms intended for businesses and a final portion to be used as consulting rooms for the medical staff.



FIRST FLOOR

Height: + 3.40 m.

Areas designed: department of surgery (located just above the first aid department for optimizing the patient's transport and intervention times); added on to the latter there are also the physicians' changing room and preparation room, operating rooms and awakening rooms. Along the structural layout are located rooms used as classrooms for academic teaching and laboratories, a large area dedicated to gym for motor activity recovery, medical staff dressing rooms, storage rooms for dirty and clean materials, direct medical care rooms, in-patient room, rooms used as kitchen for the medical staff, authorized staff area, labour rooms, newborn island and post-partum control room.



SECOND FLOOR

Height: + 6.80 m.

Moving on we find: a large area dedicated as an auditorium, an additional conference classroom, rooms used as offices for the administrative staff, technical library hall for academic purposes and patients' consultation, in-patients' rooms, direct medical care rooms, storage rooms for clean and dirty materials, medical staff dressing rooms and canteen area with relaxation room for the medical staff.

THIRD FLOOR

Height: + 10.20 m.

Entrance of the Day Hospital, Entrance and reception desk, medical examination rooms, storage rooms for dirty and clean materials, kitchen rooms for the medical staff, day hospital ward, room to be used for operations that do not require the support of the department of surgery located on the first floor, medical staff dressing room. In the adjacent wings we find: the hospital internal residence, rooms used as administrative offices, in-patients' rooms, direct medical care rooms, storage rooms for dirty and clean materials, medical staff dressing rooms, kitchen rooms and relaxation room for the medical staff.

FOURTH FLOOR

Height: + 13.60 m.

Entrance and reception desk of day surgery, day surgery hospitalization rooms, outpatient surgery rooms, medical examination rooms, storage rooms for dirty and clean materials, kitchen rooms for the medical staff. In the adjacent wings we find: individual office rooms with meeting rooms (intended for health managers), internal file rooms, residence, in-patients' rooms, direct medical care rooms, kitchen rooms for medical staff, medical staff dressing room, storage room for dirty and clean materials.

For further information, e-mail:

Matteo Romano: err_teo@hotmail.it