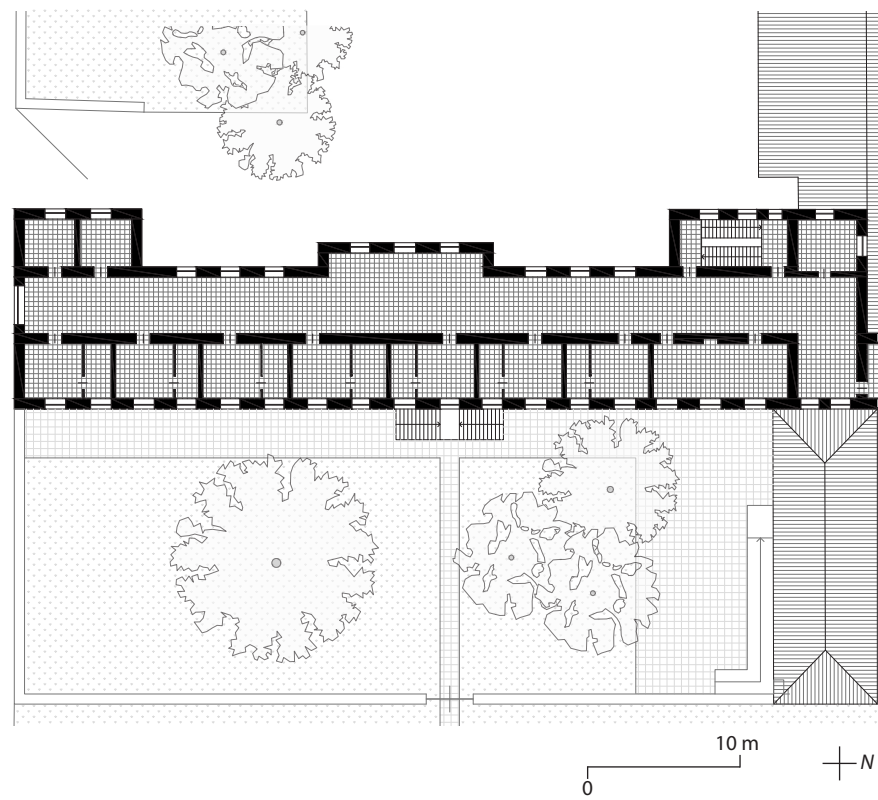
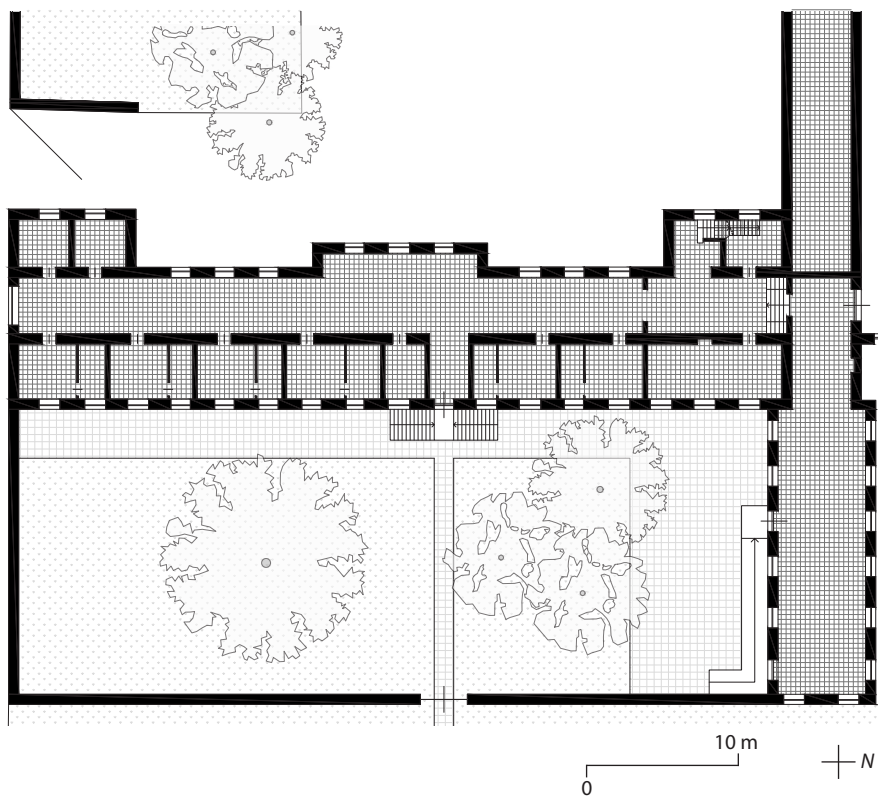


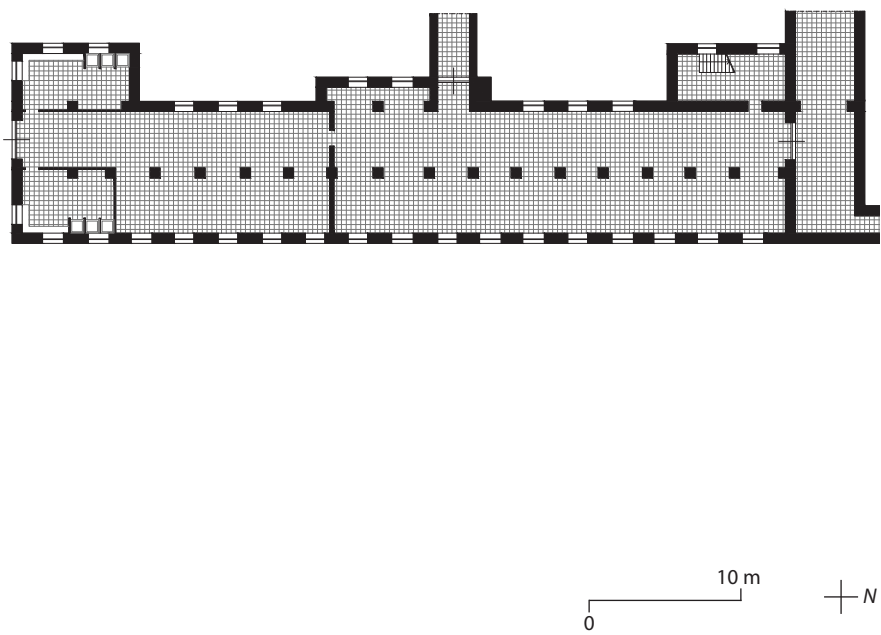
Padiglione 13 Residenza universitaria



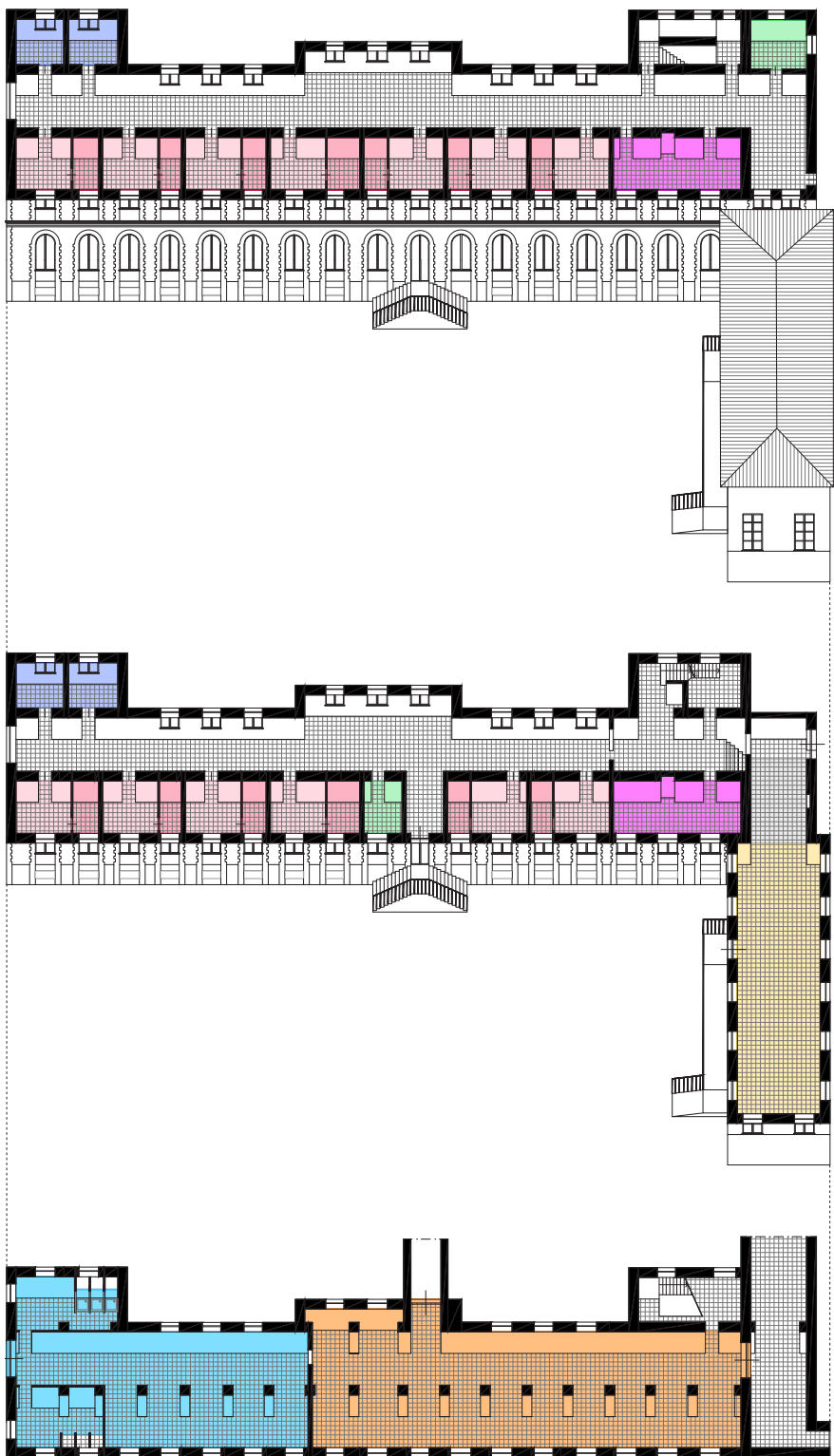
Pianta piano primo Padiglione 13, restituzione grafica in scala 1:500



Pianta piano terra Padiglione 13, restituzione grafica in scala 1:500



Pianta piano interrato Padiglione 13, restituzione grafica in scala 1:500

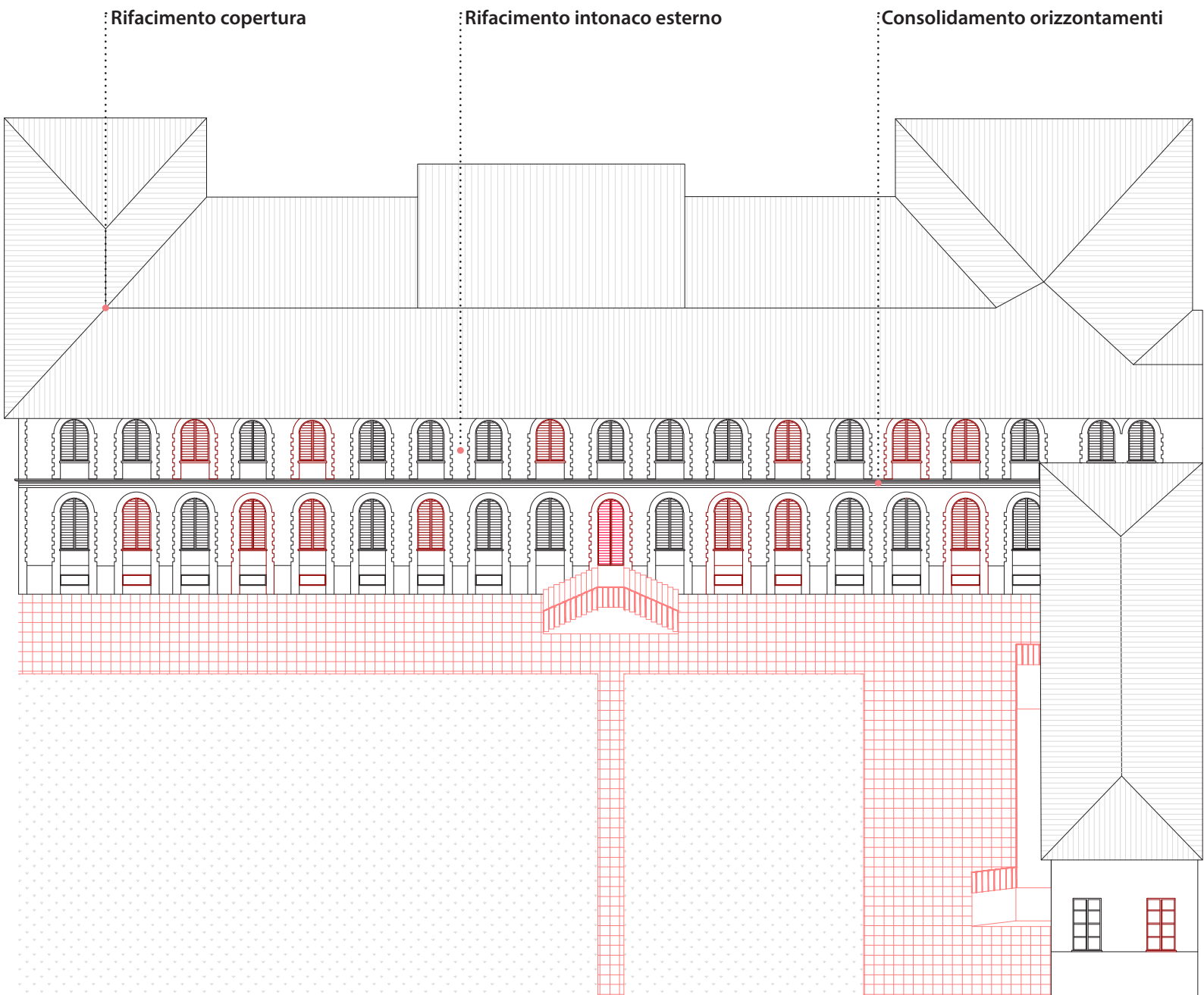


Esploso assometrico con divisione degli ambienti

Piano primo		
7	Camere	14 mq
7	Bagni privati	6 mq
2	Bagni comuni	11 mq
1	Cucina comune	33 mq
1	Lavanderia	13 mq

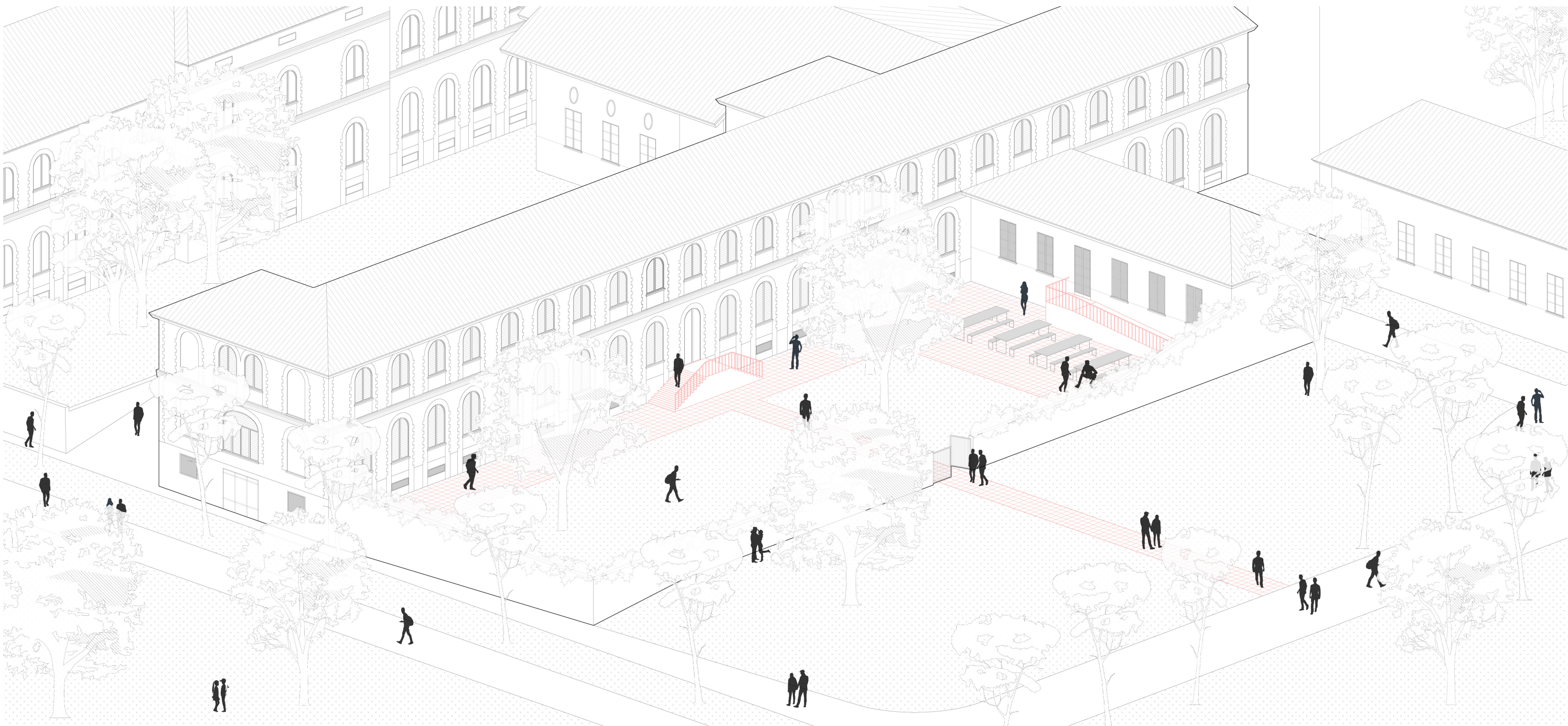
Piano terra rialzato		
6	Camere	14 mq
6	Bagni privati	6 mq
2	Bagni comuni	11 mq
1	Cucina comune	33 mq
1	Lavanderia	10 mq
1	Reception	23 mq
1	Zona relax	100 mq

Piano interrato		
1	Aula studio	257 mq
1	Palestra	184 mq



- Sostituzioni
- Aggiunte

Padiglione 13, legenda interventi



Restituzione Assometrica del Padiglione 13, Residenza Universitaria